



Chipsmall Limited consists of a professional team with an average of over 10 year of expertise in the distribution of electronic components. Based in Hongkong, we have already established firm and mutual-benefit business relationships with customers from,Europe,America and south Asia,supplying obsolete and hard-to-find components to meet their specific needs.

With the principle of “Quality Parts,Customers Priority,Honest Operation,and Considerate Service”,our business mainly focus on the distribution of electronic components. Line cards we deal with include Microchip,ALPS,ROHM,Xilinx,Pulse,ON,Everlight and Freescale. Main products comprise IC,Modules,Potentiometer,IC Socket,Relay,Connector.Our parts cover such applications as commercial,industrial, and automotives areas.

We are looking forward to setting up business relationship with you and hope to provide you with the best service and solution. Let us make a better world for our industry!



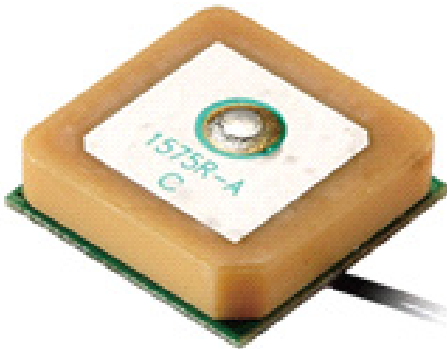
Contact us

Tel: +86-755-8981 8866 Fax: +86-755-8427 6832

Email & Skype: info@chipsmall.com Web: www.chipsmall.com

Address: A1208, Overseas Decoration Building, #122 Zhenhua RD., Futian, Shenzhen, China





Key Features

- GPS Active
- LNA gain of 28dB
- Centre frequency of 1575.42MHz
- Small footprint: 18.6 x 18.6mm

Additional Considerations

- Built in LNA (Low Noise Amplifier) that produces high gain potential
- Ceramic filter to reduce noise
- Small footprint allows integration into tight spaces
- Variety of cable lengths available
- 1.13mm cable type

Quality Tests

Moisture Proof

The device should satisfy the electrical characteristics specified in specifications over page after exposed to the temperature $40\pm 2^{\circ}\text{C}$ and the relative humidity 90~95 \pm RH for 96 hours and 1~2 hours recovery time under normal conditions.

Vibration Resist

The device should satisfy the electrical characteristics specified over page after applied to the vibration of 10~55Hz with amplitude of 1.5mm for 2 hours in each X, Y and Z directions.

Drop Shock

The device should satisfy the electrical characteristics specified overpage after dropping onto the hard wooden board from the height of 30cm for 3 times each facet of the 3 dimensions of the device.

High Temperature Endurance

The device should satisfy the electrical characteristics specified overpage after exposed to temperature $80\pm 5^{\circ}\text{C}$ for 24 ± 2 hours and 1~2 hours recovery time under normal temperature.

Low Temperature Endurance

The device should also satisfy the electrical characteristics overpage after exposed to the temperature $-40\pm 5^{\circ}\text{C}$ for 24 ± 2 hours and 1~2 hours recovery time under normal temperature.

Temperature Cycle Test

The device should also satisfy the electrical characteristics specified overpage after exposed to the low temperature of -25°C and high temperature $+85^{\circ}\text{C}$ for 30 ± 2 minutes each by 5 cycles and 1~2 hours recovery time under normal temperature.

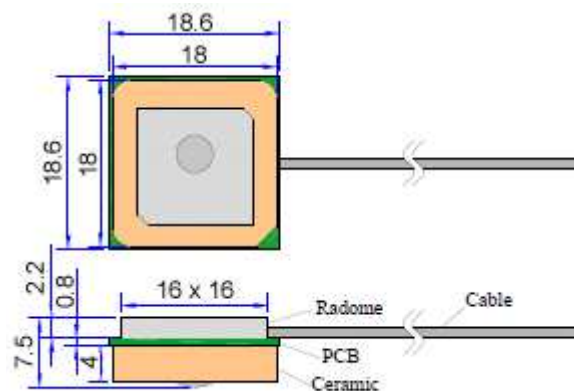
Rev 1.0

Key Specifications - Electrical

Operating temperature:	-40 to +85°C
Relative humidity:	Up to 75%
Impedance:	50 ohm
Gain:	28dB ± 2dB
VSWR:	<2.0 (min)
Supply voltage:	3~5V DC
Current consumption:	5~10mA
Centre frequency:	1575MHz ± 3MHz
Bandwidth:	CF ± 5MHz
Polarization:	RHCP
Noise figure:	<2
Ex-band attenuation:	30dB@CF ± 40MHz
Vibration:	10 to 55Hz with 1.5mm amplitude 2hrs
Environmentally friendly:	RoHS compliant

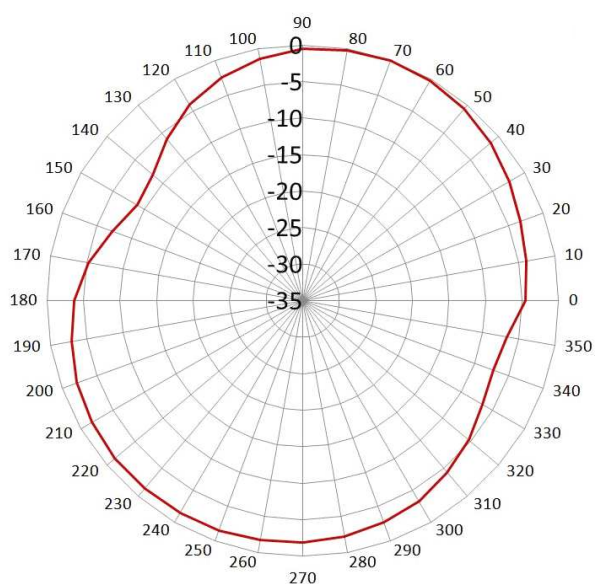
Key Specifications - Mechanical

Dimensions:	18.6 x 18.6mm
Cable:	RG1.13 or others
Connector:	IPEX or others
Mounting:	Internal

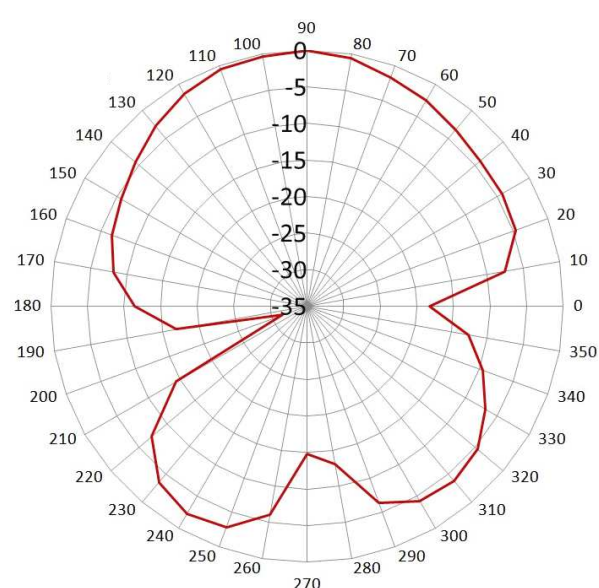


Radiation Patterns

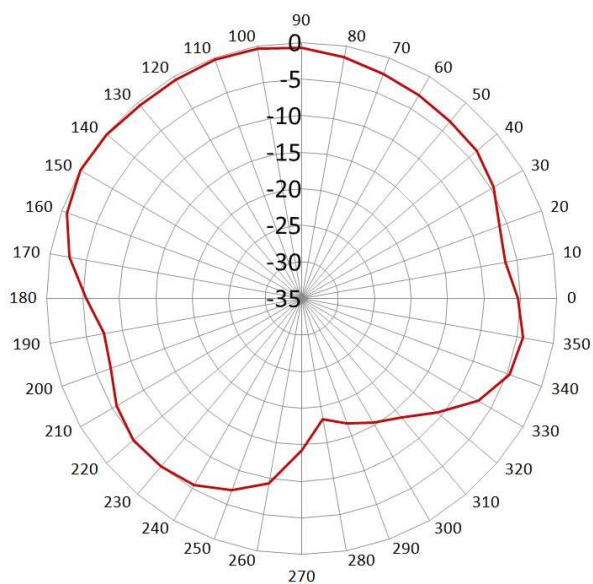
XY Plane



YZ Plane



XZ Plane



Ordering Details:

Part number	Description
ECHO26/0.1M/IPEX/S/S/26	GPS Internal Active Antenna, 100mm Cable, IPEX Connector