



Chipsmall Limited consists of a professional team with an average of over 10 year of expertise in the distribution of electronic components. Based in Hongkong, we have already established firm and mutual-benefit business relationships with customers from,Europe,America and south Asia,supplying obsolete and hard-to-find components to meet their specific needs.

With the principle of “Quality Parts,Customers Priority,Honest Operation,and Considerate Service”,our business mainly focus on the distribution of electronic components. Line cards we deal with include Microchip,ALPS,ROHM,Xilinx,Pulse,ON,Everlight and Freescale. Main products comprise IC,Modules,Potentiometer,IC Socket,Relay,Connector.Our parts cover such applications as commercial,industrial, and automotives areas.

We are looking forward to setting up business relationship with you and hope to provide you with the best service and solution. Let us make a better world for our industry!



Contact us

Tel: +86-755-8981 8866 Fax: +86-755-8427 6832

Email & Skype: info@chipsmall.com Web: www.chipsmall.com

Address: A1208, Overseas Decoration Building, #122 Zhenhua RD., Futian, Shenzhen, China



Eclipse Command System - NEMA 12 *ECP Series*

Command Enclosure



Application

- Designed to enclose electronic controls, instruments and components in indoor environments where dirt, dust, oil and water may be present.
- Ideal for use with suspension systems.
- Multiple mounting provisions and full front mounting space provide for idea operator interface.
- Smooth flush surfaces and attractive finishes compliment high tech equipment.

Standards

- UL 508 Type 12
- CSA Type 12
- **Complies with**
 - NEMA Type 12 and 13
 - IEC 60529, IP54

Construction

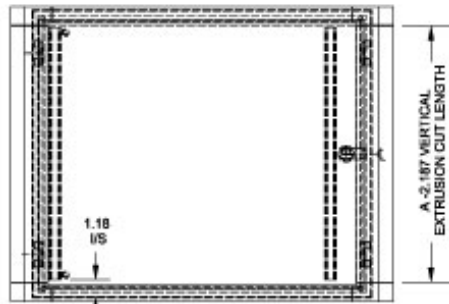
- Formed from 16 gauge steel.
- Smooth, continuously welded seams ground smooth.
- Door stiffeners are designed to also permit additional mounting options.
- Formed lip on enclosure to exclude flowing liquids and contaminants.
- Reversible rear door is secured with slotted quarter turn fasteners.
- Door frames have zinc die-cast corners with extrusion pressed aluminum profiles.
- Door front panels are 3mm aluminum.
- Oil resistant gaskets are permanently secured.
- Bonding stud provided on door and grounding stud installed in enclosure.
- Quarter turn latches formed from mild steel.
- Formed steel hinge with stainless steel hinge pins.
- Fastening is recommended with optional Tara Plus or 50/80 suspension systems.
- Optional red handle easily mounts horizontally to bottom of enclosure front frame. Order separately.
- Heavy duty re-inforcing plate included.

Finish

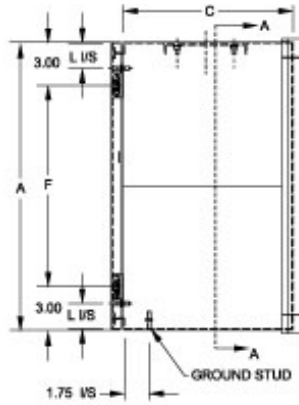
- Finished in RAL 7040 gray powder coating.
- Door panel is natural aluminum.

Accessories

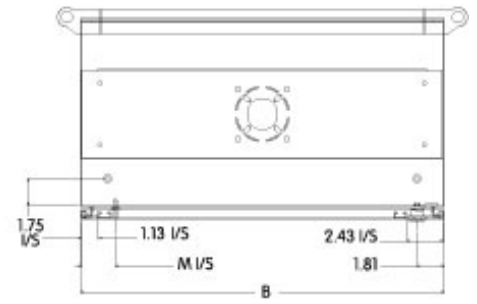
- Optional Inner Panel
- Optional Handle
- Tara Plus Suspension System
- Heavy Duty 50/80 mm Suspension



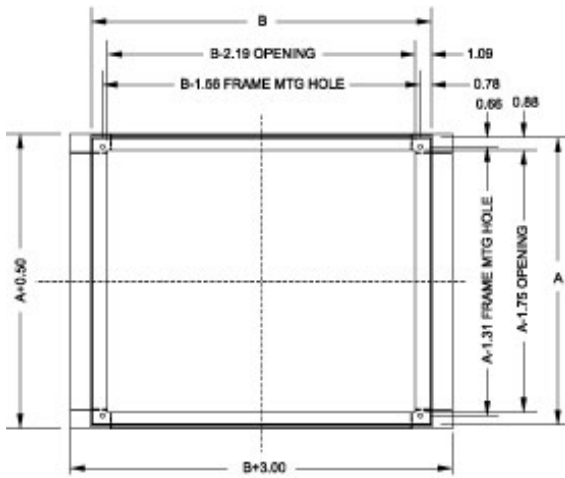
Front View



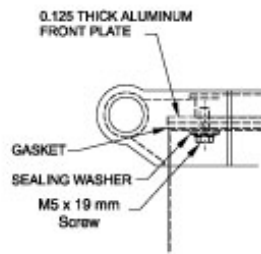
Side View - Hinge Side



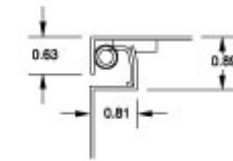
End View Section



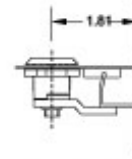
Section A-A



Corner Detail
Typ. 4 Places



Cross Section of 16 Gauge Body and Door



Lock Section

| Part No. | Overall Dimensions | | | | | | Optional Handle Part No. | Optional Panel Part No. | Ship Wt. lbs. |
|-----------|--------------------|-------|-------|-------|------|------|--------------------------|-------------------------|---------------|
| | A | B | C | F | L | M | | | |
| ECP12126 | 12.00 | 12.00 | 6.00 | 6.00 | 1.50 | 2.25 | ECPH12 | ECPP1212 | 17 |
| ECP12168 | 12.00 | 16.00 | 8.00 | 6.00 | 1.50 | 2.25 | ECPH16 | ECPP1216 | 21 |
| ECP161610 | 16.00 | 16.00 | 10.00 | 10.00 | 1.50 | 2.25 | ECPH16 | ECPP1616 | 29 |
| ECP162010 | 16.00 | 20.00 | 10.00 | 10.00 | 1.50 | 2.25 | ECPH20 | ECPP1620 | 32 |
| ECP20246 | 20.00 | 24.00 | 6.00 | 14.00 | 1.50 | 2.25 | ECPH24 | ECPP2024 | 34 |
| ECP202412 | 20.00 | 24.00 | 12.00 | 14.00 | 1.50 | 2.25 | ECPH24 | ECPP2024 | 43 |

Data subject to change without notice