



Chipsmall Limited consists of a professional team with an average of over 10 year of expertise in the distribution of electronic components. Based in Hongkong, we have already established firm and mutual-benefit business relationships with customers from,Europe,America and south Asia,supplying obsolete and hard-to-find components to meet their specific needs.

With the principle of “Quality Parts,Customers Priority,Honest Operation,and Considerate Service”,our business mainly focus on the distribution of electronic components. Line cards we deal with include Microchip,ALPS,ROHM,Xilinx,Pulse,ON,Everlight and Freescale. Main products comprise IC,Modules,Potentiometer,IC Socket,Relay,Connector.Our parts cover such applications as commercial,industrial, and automotives areas.

We are looking forward to setting up business relationship with you and hope to provide you with the best service and solution. Let us make a better world for our industry!



Contact us

Tel: +86-755-8981 8866 Fax: +86-755-8427 6832

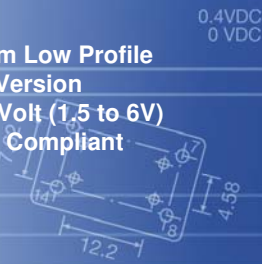
Email & Skype: info@chipsmall.com Web: www.chipsmall.com

Address: A1208, Overseas Decoration Building, #122 Zhenhua RD., Futian, Shenzhen, China





- ▶ 2.0 mm Low Profile
- ▶ SMD Version
- ▶ Multi Volt (1.5 to 6V)
- ▶ RoHS Compliant



ECS-327SMO

SMD CLOCK OSCILLATOR

The ECS-327SMO oscillators utilizes the 32.768 KHz tuning fork crystal in a SMD ceramic package. It is designed specifically for wireless PCMCIA and portable communication equipment applications.

OPERATING CONDITIONS / ELECTRICAL CHARACTERISTICS

PARAMETERS	CONDITIONS	ECS-327SMO			UNITS
		MIN	TYP	MAX	
Output Frequency			32.768		KHz
Frequency Stability	-10 ~ +60°C	-60		+30	ppm
	-40 ~ +85°C	-140		+30	ppm
Operating Temperature		-40		-85	°C
Storage Temperature		-50		+125	°C
Input Voltage Vcc		+1.5	+3.3	+6.0	V DC
Input Current	with 15 pF load		8	15	μA
Symmetry	at 1/2 Vcc level and +25°C	45/55		55/45	%
Rise and Fall Time				200	ns
"0" Level				Vcc x 0.1	
"1" Level		Vcc x 0.9			
Load	CMOS			15	pF
Disable delay Time				150	nS
Startup Time	VDD +3.3V at +25°C		220	500	mS

* Inclusive of 25° C tolerance, operating temperature range, input voltage change, load change aging, shock and vibration

PACKAGE DIMENSIONS (mm)

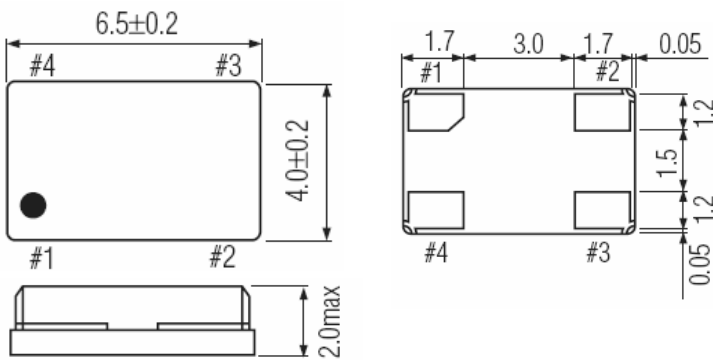


Figure 1) Top, Side and Bottom Views

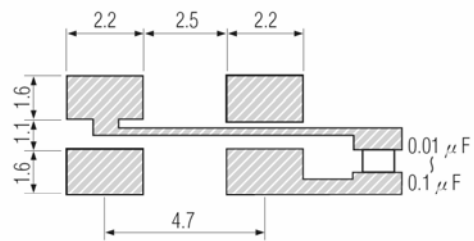
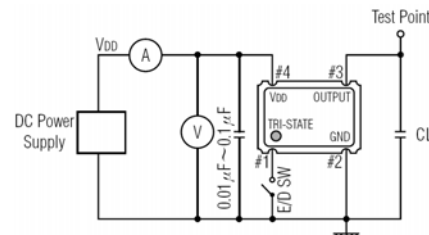


Figure 2) Land Pattern

PAD CONNECTIONS		
#1	"L"	Open or "H"
#2		Gnd
#3	Z	Output
#4		Vcc

Z = High Impedance

PACKAGE DATA	
COVER	METAL
BASE	CERAMIC
TERMINAL PLATING	GOLD



CL : including fixture and probe capacitance.

Figure 3) Test Circuit

PART NUMBER: ECS-327SMO-TR