



Chipsmall Limited consists of a professional team with an average of over 10 year of expertise in the distribution of electronic components. Based in Hongkong, we have already established firm and mutual-benefit business relationships with customers from,Europe,America and south Asia,supplying obsolete and hard-to-find components to meet their specific needs.

With the principle of “Quality Parts,Customers Priority,Honest Operation,and Considerate Service”,our business mainly focus on the distribution of electronic components. Line cards we deal with include Microchip,ALPS,ROHM,Xilinx,Pulse,ON,Everlight and Freescale. Main products comprise IC,Modules,Potentiometer,IC Socket,Relay,Connector.Our parts cover such applications as commercial,industrial, and automotives areas.

We are looking forward to setting up business relationship with you and hope to provide you with the best service and solution. Let us make a better world for our industry!



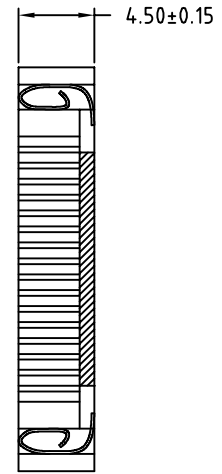
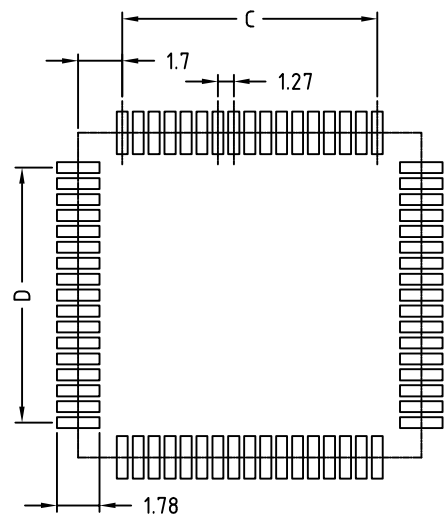
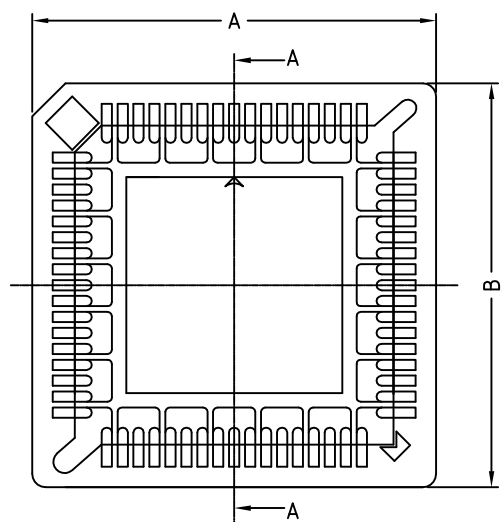
Contact us

Tel: +86-755-8981 8866 Fax: +86-755-8427 6832

Email & Skype: info@chipsmall.com Web: www.chipsmall.com

Address: A1208, Overseas Decoration Building, #122 Zhenhua RD., Futian, Shenzhen, China

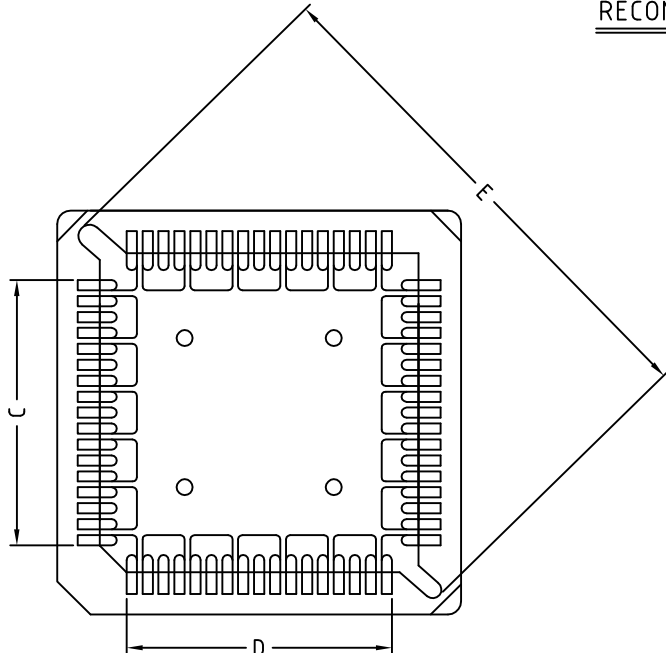




NO. OF CONTACT	A±0.3	B±0.3	C±0.3	D±0.3	E±0.3
20	15.24	15.24	5.08	5.08	16.70
28	17.78	17.78	7.62	7.62	20.30
52	25.74	25.74	15.24	15.24	31.13
68	30.82	30.82	20.32	20.32	38.31
84	35.90	35.90	25.40	25.40	45.50

RECOMMENDED P.C.B PAD LAYOUT

SECTION A-A



Insulator Material: PPS&40% Glass Fiber(UL94V-0)
 Contact Resistance: 30MO Max. at DC 100mA
 Insulator Resistance: 1000MO Min at DC 500V
 Current Rating: 1AMP
 Dielectric withstanding voltage: AC 500V for 1 minute
 Temperature Rating: -55°C ~ +105°C
 Contact Material: Phosphor Bronze

RoHS Compliant

THESE DRAWINGS AND SPECIFICATIONS ARE THE PROPERTY OF ON-SHORE TECHNOLOGY, INC. AND SHALL NOT BE REPRODUCED, COPIED OR USED IN ANY MANNER WITHOUT THE PRIOR WRITTEN CONSENT OF ON-SHORE TECHNOLOGY, INC.



TITLE		PLCC Socket - 1.27mm pitch, SMT, non-polarized, tube packaging			
PART NO.	EDO-XXPLCZ-SM-N	DWG NO.	EDO-XXPLCZ-SM-N.DWG		
APPROVED	CHECKED	DESIGNED	DRAWN	CUST NO.	1200
Helen 2012.05.22	Helen 2012.05.22	Helen 2012.05.22	Helen 2012.05.22		UNIT: mm
					SCALE: NONE
				SHEET: 01/01	REV.: A