



Chipsmall Limited consists of a professional team with an average of over 10 year of expertise in the distribution of electronic components. Based in Hongkong, we have already established firm and mutual-benefit business relationships with customers from,Europe,America and south Asia,supplying obsolete and hard-to-find components to meet their specific needs.

With the principle of “Quality Parts,Customers Priority,Honest Operation,and Considerate Service”,our business mainly focus on the distribution of electronic components. Line cards we deal with include Microchip,ALPS,ROHM,Xilinx,Pulse,ON,Everlight and Freescale. Main products comprise IC,Modules,Potentiometer,IC Socket,Relay,Connector.Our parts cover such applications as commercial,industrial, and automotives areas.

We are looking forward to setting up business relationship with you and hope to provide you with the best service and solution. Let us make a better world for our industry!



Contact us

Tel: +86-755-8981 8866 Fax: +86-755-8427 6832

Email & Skype: info@chipsmall.com Web: www.chipsmall.com

Address: A1208, Overseas Decoration Building, #122 Zhenhua RD., Futian, Shenzhen, China



THIS COPY IS PROVIDED ON A RESTRICTED BASIS AND IS NOT TO BE USED IN ANY WAY DETRIMENTAL TO THE INTERESTS OF PANDUIT CORP.

PANDUIT PART #	WIRE RANGE AWG [mm ²]	TAB SIZE INCH [mm]	DIMENSIONS in. [mm]		
			L± .03 [0,8]	H± .01 [0,3]	W± .01 [0,3]
ED18-250	#22-18 [0,5-1,0]	.250 X .032 [6,3 X 0,8]	.66 [16,8]	.12 [3,0]	.30 [7,6]
ED14-250*	#16-14 [1,5-2,5]	.250 X .032 [6,3 X 0,8]	.66 [16,8]	.12 [3,0]	.30 [7,6]



LISTED
20H3
E78522



CERTIFIED
LR31212

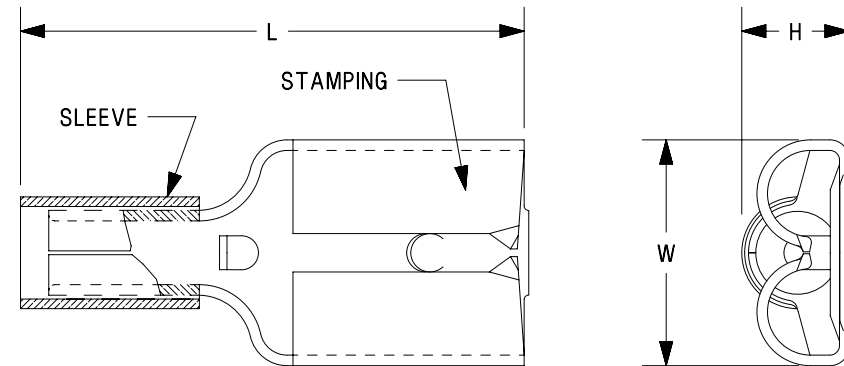


RECOGNIZED
E78522

* UL RECOGNIZED ONLY

NOTES:

- USED FOR:
 - STRANDED COPPER WIRE ONLY
 - 302°F [150°C] MAX OPERATING TEMPERATURE
 - 2000V MAX VOLTAGE
- MATERIAL:
 - STAMPING: .016 [0,41] TIN PLATED BRASS
 - SLEEVE: TIN PLATED BRASS
- INSTALLATION TOOLS:
 - UL LISTED AND CSA CERTIFIED:
CT-100A, CT-200, CT-570, CT-1570, CT-2457CH, CT-2500 W/CT-2570CH
 - UL RECOGNIZED:
CT-100A, CT-200, CT-600-A W/CT-570CH, CT-1570, CT-2457CH, CT-2500 W/CT-2570CH
- WIRE STRIP LENGTH: 9/32" ^{+1/32} ₋₀ [7,1mm ^{+0,8} ₋₀]
- SEE WWW.PANDUIT.COM FOR PACKAGE QUANTITIES INDICATED BY PART NUMBER SUFFIX
- DIMENSIONS IN BRACKETS ARE METRIC EQUIVALENT



TITLE STRONGHOLD FEMALE DISCONNECT (250 SERIES) NON-INSULATED, SLEEVED BARREL #22-14 AWG CUSTOMER DRAWING				
ITEM REVISION NAME		00123SHD/00		
DATASET FILE NAME		00123SHD_DC_00A		
UNLESS OTHERWISE SPECIFIED, DIMENSIONAL TOLERANCES ARE: IN [mm]		.x ± .1 [2.54] .xxx ± .005 [.127] .xx ± .01 [.25] ANGLES ± 5 °		
THIRD ANGLE PROJECTION		MATERIAL: SEE NOTES		
DRAWN BY		DATE	CHK	SCALE
TMR		10.10.17	JHNU	N.T.S.
DRAWING NUMBER:		SH41304		
REV	DATE	BY	CHK	APR
00	10.10.17	TMR	JHNU	RGB
DESCRIPTION				ECN
DRAWING RELEASED				00123SH
SHEET 1 OF 1		SIZE		
A		A		

D101000DA/12