



Chipsmall Limited consists of a professional team with an average of over 10 year of expertise in the distribution of electronic components. Based in Hongkong, we have already established firm and mutual-benefit business relationships with customers from,Europe,America and south Asia,supplying obsolete and hard-to-find components to meet their specific needs.

With the principle of “Quality Parts,Customers Priority,Honest Operation,and Considerate Service”,our business mainly focus on the distribution of electronic components. Line cards we deal with include Microchip,ALPS,ROHM,Xilinx,Pulse,ON,Everlight and Freescale. Main products comprise IC,Modules,Potentiometer,IC Socket,Relay,Connector.Our parts cover such applications as commercial,industrial, and automotives areas.

We are looking forward to setting up business relationship with you and hope to provide you with the best service and solution. Let us make a better world for our industry!



## Contact us

Tel: +86-755-8981 8866 Fax: +86-755-8427 6832

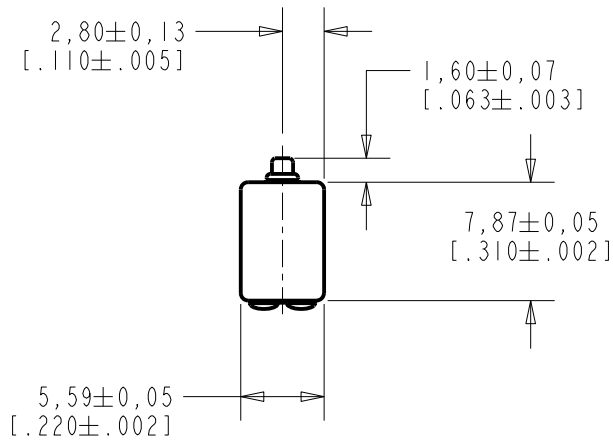
Email & Skype: info@chipsmall.com Web: www.chipsmall.com

Address: A1208, Overseas Decoration Building, #122 Zhenhua RD., Futian, Shenzhen, China

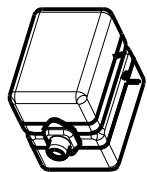
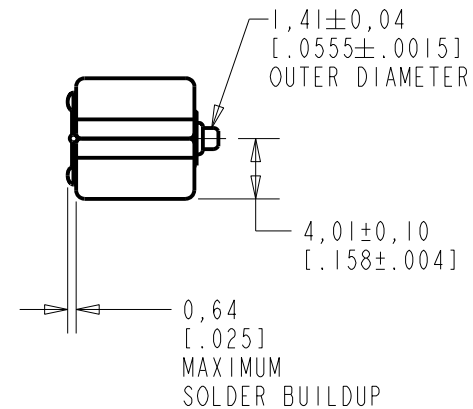
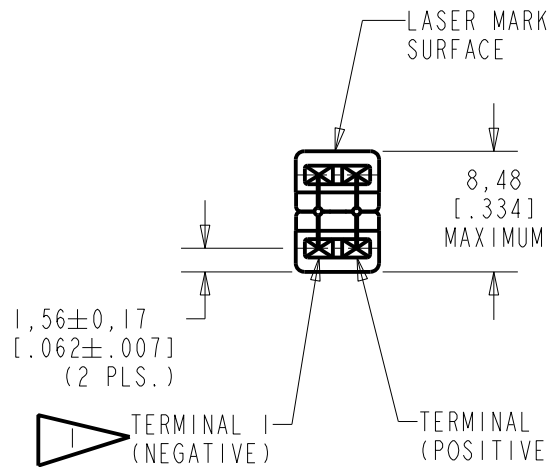


EF-26708-017

SHT 1.1



NOTES:  
 1 A POSITIVE GOING VOLTAGE AT TERMINAL 2, RELATIVE TO TERMINAL 1, CAUSES A DECREASE IN PRESSURE AT THE SOUND OUTLET.



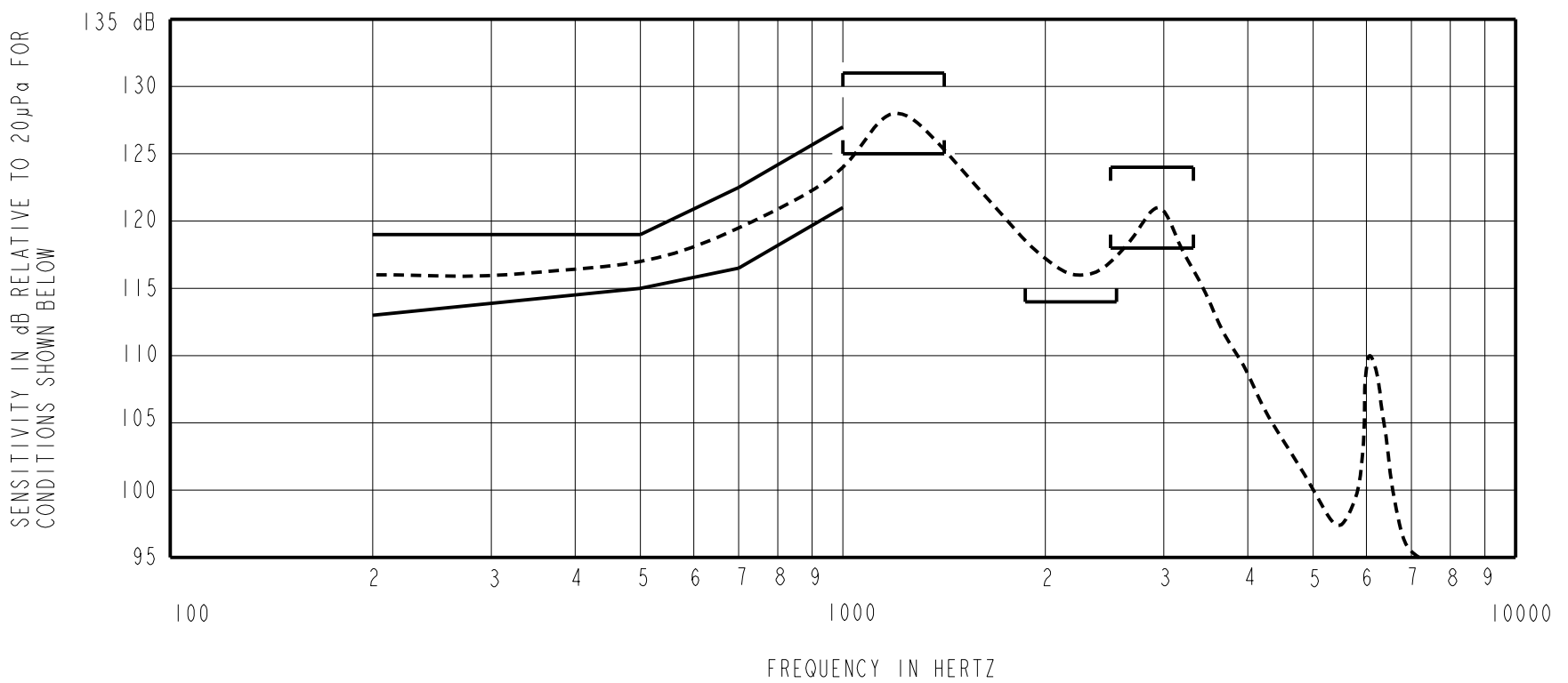
NOMINAL WEIGHT  
1.38 GRAM

DIMENSIONS IN MILLIMETERS [INCHES]

Revision	C.O. #	Implementation Date	RELEASE LEVEL	REVISION
C	CI0116295	10-14-14	Active	C
B	CI0115014	7-2-13		
A	CI0103491	12-1-05		

**KNOWLES ELECTRONICS**  
 ITASCA, ILLINOIS U.S.A.

SCALE: 2:1		DR. BY	DATE
DO NOT SCALE DRAWING		MMM	12-1-05
TITLE: RECEIVER		CK. BY	DATE
OUTLINE DRAWING		GJP	12-2-05
EF-26708-017		APP. BY	DATE
SHT 1.1		GJP	12-2-05



NOTES:

1. MEASUREMENTS MADE USING 10mm[.394"] X 1mm[.039"] ID TUBE CONNECTED TO A SIMULATED ANSI S3.7-1973 TYPE HA-3 COUPLER (IEC 60318-5) INTO 2CC (HA-2 COUPLER)

2. SENSITIVITY

FREQUENCY	MIN.	MAX.
200	113.0	119.0
500	115.0	119.0
700	116.5	122.5
1000	121.0	127.0
1000-1500	125.0	131.0
1900-2600	114.0	---
2550-3350	118.0	124.0

- 3. RESPONSE, IMPEDANCE, AND DISTORTION MEASUREMENTS MADE USING THE ELECTRICAL TEST CONDITIONS SHOWN BELOW.
- 4. ELECTRICAL SOURCE IMPEDANCE MUST BE GREATER THAN 20 TIMES 1KHz IMPEDANCE FOR TEST CONDITIONS SHOWN BELOW.
- 5. INDIVIDUAL SPECIFICATIONS.

PORT LOCATION	IMPEDANCE OHMS ±15%		DCR @20°C OHMS ±10%	DISTORTION		ELECTRICAL TEST CONDITIONS	
	1KHz	500Hz		MAX. %	FREQ Hz	AC mA RMS	DC mA
12S	175	70	25	9	500	3.34	0.00

6. SUFFIX DESCRIPTION:

- 1) BUZZ TEST  
CONSTANT VOLTAGE DRIVE SET TO 56.6 mV/100 Hz, FREQUENCY BAND IS 3550-6750 Hz, AND THE NOISE LIMIT IS 55 mV.
- 2) TEST GUARD BAND  
APPLY GUARD BANDS FOR RESPONSE AND THD AS SPECIFIED ABOVE.
- 3) VISUAL INSPECTION  
VISUALLY INSPECT UNITS FOR GOOD WORKMANSHIP eg. TERMINAL PADS, SOLDER, SCRATCHES, ETC.

Revision	C.O. #	Implementation Date	RELEASE LEVEL	REVISION
C	C10116295	10-14-14	Active	C
B	C10115014	7-2-13		
A	C10103491	12-1-05		

**KNOWLES ELECTRONICS**  
ITASCA, ILLINOIS U.S.A.

WHEN TEST LIMITS ARE USED TO ESTABLISH INCOMING INSPECTION ACCEPTANCE/REJECTION CRITERIA, CORRELATION OF TEST EQUIPMENT WITH KNOWLES IS ALSO REQUIRED FOR ELIMINATION OF EQUIPMENT AND TEST METHOD VARIATION

TITLE: **RECEIVER**  
PERFORMANCE SPECIFICATION

**EF-26708-017**  
SHT 2.1

DR. BY	DATE
MMM	12-1-05
CK. BY	DATE
GJP	12-2-05
APP. BY	DATE
GJP	12-2-05