



Chipsmall Limited consists of a professional team with an average of over 10 year of expertise in the distribution of electronic components. Based in Hongkong, we have already established firm and mutual-benefit business relationships with customers from,Europe,America and south Asia,supplying obsolete and hard-to-find components to meet their specific needs.

With the principle of “Quality Parts,Customers Priority,Honest Operation,and Considerate Service”,our business mainly focus on the distribution of electronic components. Line cards we deal with include Microchip,ALPS,ROHM,Xilinx,Pulse,ON,Everlight and Freescale. Main products comprise IC,Modules,Potentiometer,IC Socket,Relay,Connector.Our parts cover such applications as commercial,industrial, and automotives areas.

We are looking forward to setting up business relationship with you and hope to provide you with the best service and solution. Let us make a better world for our industry!



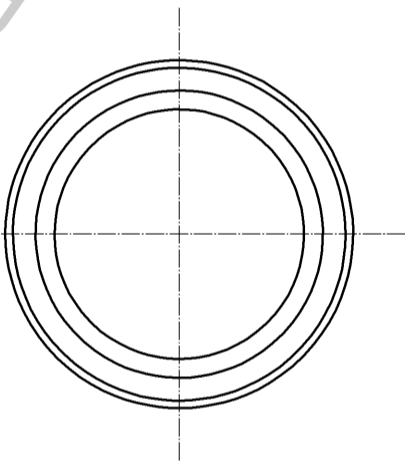
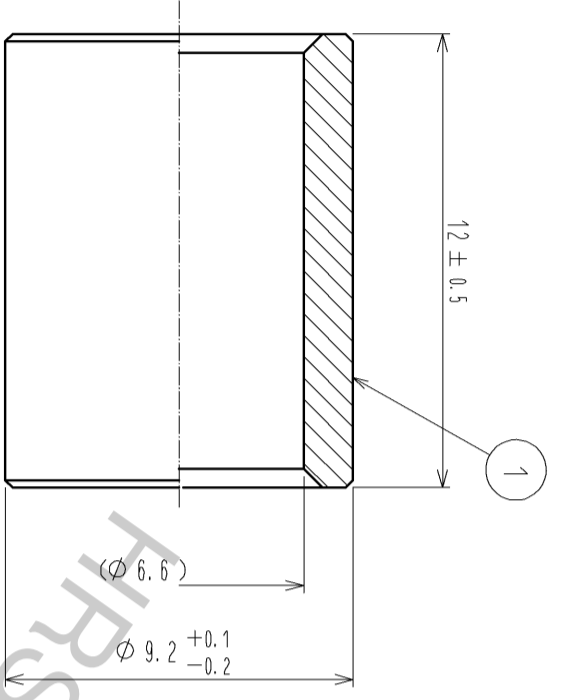
Contact us

Tel: +86-755-8981 8866 Fax: +86-755-8427 6832

Email & Skype: info@chipsmall.com Web: www.chipsmall.com

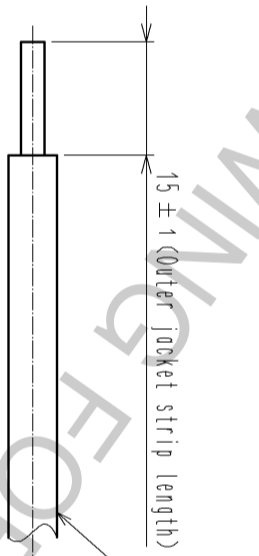
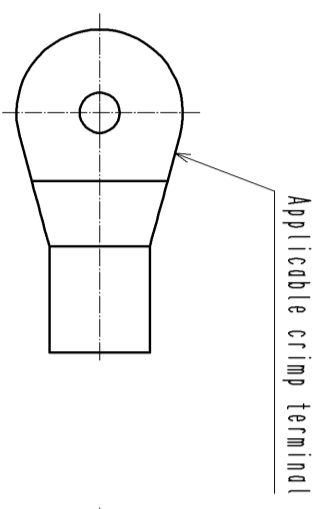
Address: A1208, Overseas Decoration Building, #122 Zhenhua RD., Futian, Shenzhen, China





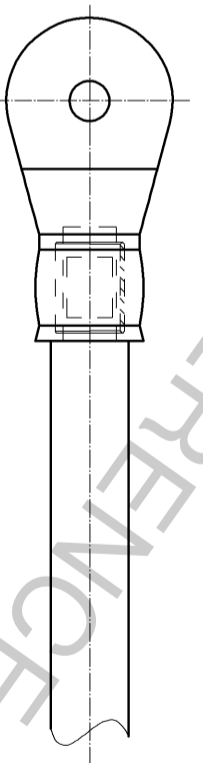
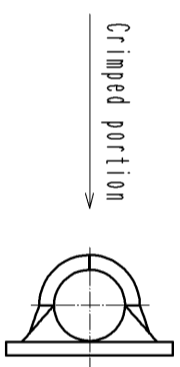
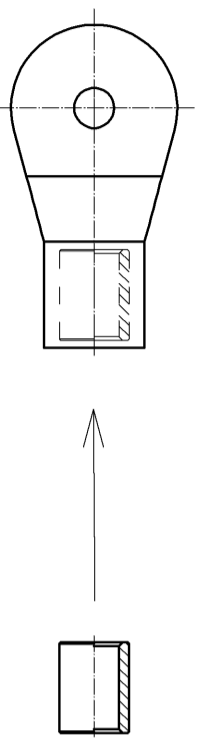
- NOTES
- 1 This sleeve is used for crimping 8 mm² or 5.5 mm² size cable to 38 mm² size crimp terminals.
 - 2 Applicable crimp terminal for this product is packaged terminal of EF1-38R*1SC* or EF1-38P*1PC*.
 - 3 Recommended crimping tool:
REC 150F(JIS C 9711) manufactured by IZUMI product company.
 - 4 One bag includes 100pcs of products.

Instructions for the cable assembly (1:1)



(1) Insert EF1-38-8 into the applicable crimp terminal.

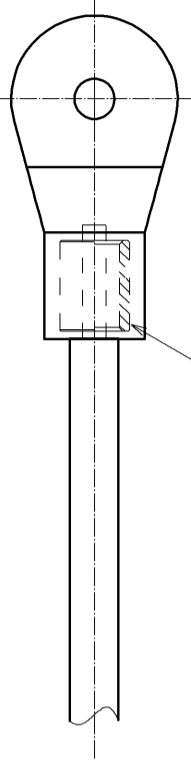
(3) Crimp the contact with the recommended crimping tool at size 38 position.



Avoid the deformation especially to the shape described with two-dot chain line.

(2) Insert the applicable cable into the applicable crimp terminal.

Locate EF1-38-8 at the central of the crimp terminal.



1	Copper alloy	Tin plating	REMARKS	
NO.	MATERIAL	FINISH	REMARKS	
UNITS	SCALE	COUNT	DESCRIPTION OF REVISIONS	DESIGNED
mm	5 : 1	2	DIS-C-003077	HS. KAWASHIMA
APPROVED : SU. OBARA		13.02.22	DRAWING NO.	EDC3-118016-00
CHECKED : YH. YAMADA		13.02.22	PART NO.	EF1-38-8
DESIGNED : HS. KAWASHIMA		13.02.22	CODE NO.	CL142-0007-0-00
DRAWN : KN. Ikehara		13.02.22	DATE	13.06.03