



Chipsmall Limited consists of a professional team with an average of over 10 year of expertise in the distribution of electronic components. Based in Hongkong, we have already established firm and mutual-benefit business relationships with customers from,Europe,America and south Asia,supplying obsolete and hard-to-find components to meet their specific needs.

With the principle of “Quality Parts,Customers Priority,Honest Operation,and Considerate Service”,our business mainly focus on the distribution of electronic components. Line cards we deal with include Microchip,ALPS,ROHM,Xilinx,Pulse,ON,Everlight and Freescale. Main products comprise IC,Modules,Potentiometer,IC Socket,Relay,Connector.Our parts cover such applications as commercial,industrial, and automotives areas.

We are looking forward to setting up business relationship with you and hope to provide you with the best service and solution. Let us make a better world for our industry!



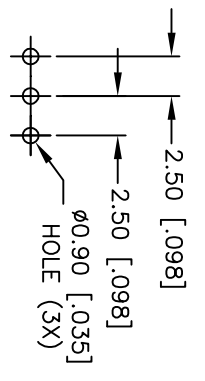
Contact us

Tel: +86-755-8981 8866 Fax: +86-755-8427 6832

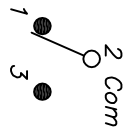
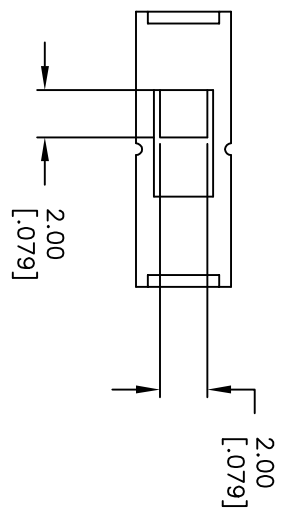
Email & Skype: info@chipsmall.com Web: www.chipsmall.com

Address: A1208, Overseas Decoration Building, #122 Zhenhua RD., Futian, Shenzhen, China



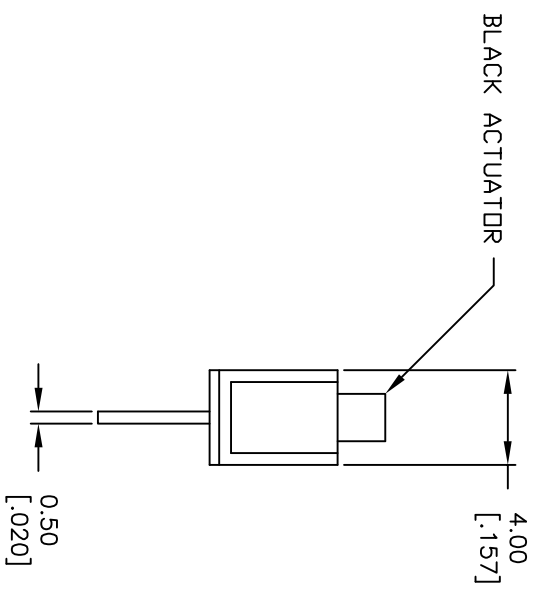
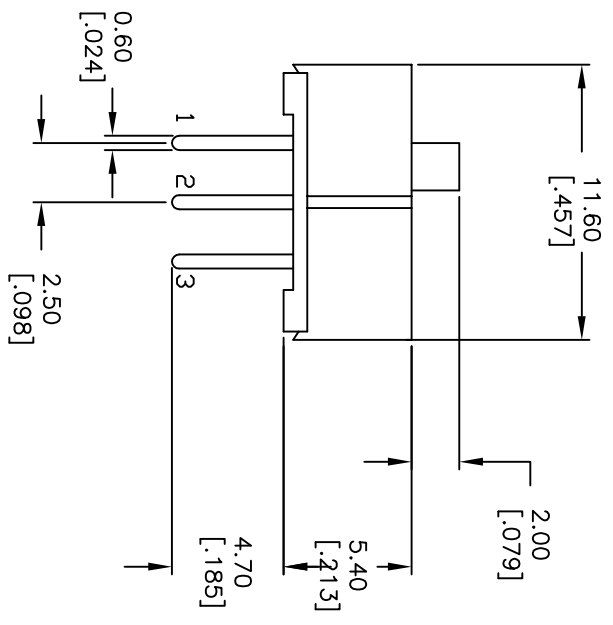


RECOMMENDED P.C.B. LAYOUT
NOT TO SCALE



CIRCUIT: SPDT
TIMING: NON SHORTING

- NOTES:
1. ALL DIMENSIONS IN MM [INCH]
 2. GENERAL TOLERANCE: X.X=±0.4
X.XX=±0.25
 3. TERM. NOS. FOR REFERENCE ONLY.
 4. ELECTRICAL RATING: 0.2A @30VDC
 5. CONTACT MATERIAL: Copper Alloy W/Silver Plating
 6. OPERATING FORCE: 250±100gf
 7. TRAVEL: 2.5mm
 8. CONTACT RESISTANCE: 50MILLI-OHMS Max.
 9. DIELECTRIC STRENGTH: 500V RMS@ SEA LEVEL.
 10. INSULATION RESISTANCE: 100Mega-OHMS Min.
 11. OPERATING TEMP.: -20°C to 70°C



C	17823	ADDED TERMINAL LENGTH DIM.	10/30/07	BF
B	11770	REVISED AND REDRAWN	10/22/01	CJB
REV.	ECN NO.	DESCRIPTION	DATE	CHKD

TITLE		EG1218		DR	BF	DWG	P040040	REV	C
SCALE	3:1	DATE	10/30/07						



THE INFORMATION CONTAINED IN THIS DOCUMENT IS PROPRIETARY TO E-SWITCH AND IS NOT TO BE COPIED OR TRANSFERRED