



Chipsmall Limited consists of a professional team with an average of over 10 year of expertise in the distribution of electronic components. Based in Hongkong, we have already established firm and mutual-benefit business relationships with customers from,Europe,America and south Asia,supplying obsolete and hard-to-find components to meet their specific needs.

With the principle of “Quality Parts,Customers Priority,Honest Operation,and Considerate Service”,our business mainly focus on the distribution of electronic components. Line cards we deal with include Microchip,ALPS,ROHM,Xilinx,Pulse,ON,Everlight and Freescale. Main products comprise IC,Modules,Potentiometer,IC Socket,Relay,Connector.Our parts cover such applications as commercial,industrial, and automotives areas.

We are looking forward to setting up business relationship with you and hope to provide you with the best service and solution. Let us make a better world for our industry!



## Contact us

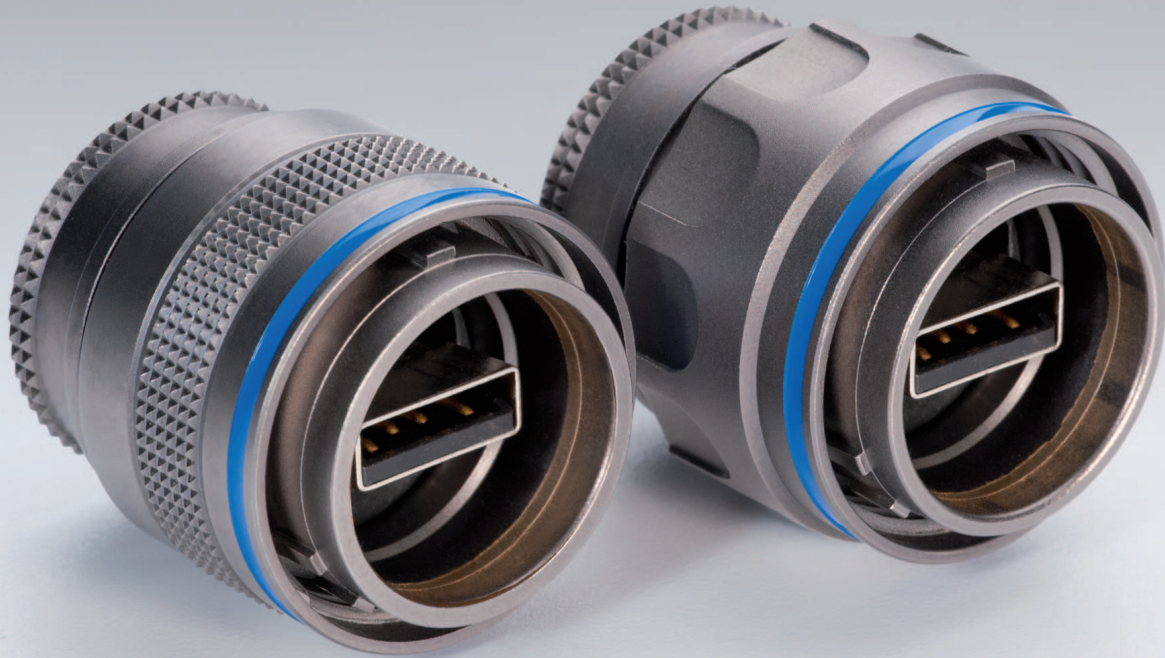
Tel: +86-755-8981 8866 Fax: +86-755-8427 6832

Email & Skype: info@chipsmall.com Web: www.chipsmall.com

Address: A1208, Overseas Decoration Building, #122 Zhenhua RD., Futian, Shenzhen, China



# M SERIES USB CONNECTORS RATCHET COUPLING



## Rugged Waterproof USB Connector (IP68)

LEMO has added a USB connector to its M Series product. This addition of a USB type A connector offers a reliable solution for harsh environments and when mated the connector meets the IP68 rating. This particular connector is designed for outdoor use including oil/petroleum, automotive, mining, military, marine or any type of application that requires rugged and reliable connections.

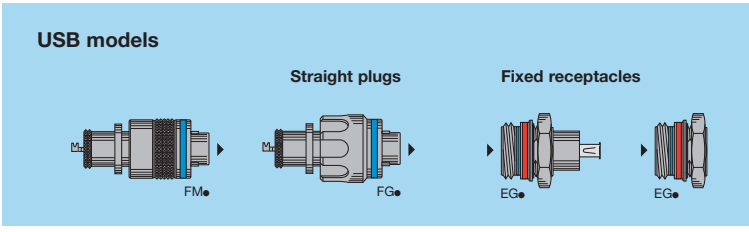
The complete product line includes panel mount sockets, plugs, protective, and caps.

### Features & Benefits

- Waterproof IP68 (when mated)
- Rugged, Outdoor, Harsh Environment
- Resistance to Vibration
- Lightweight
- Fast and Easy to Secure USB
- Aluminum or Brass outershell with conductive finish
- Use with off-the-shelf USB cable assemblies
- Easy to Use
- USB 2.0

This new addition to the M Series is just another product built by LEMO with Quality, Reliability and Safety!

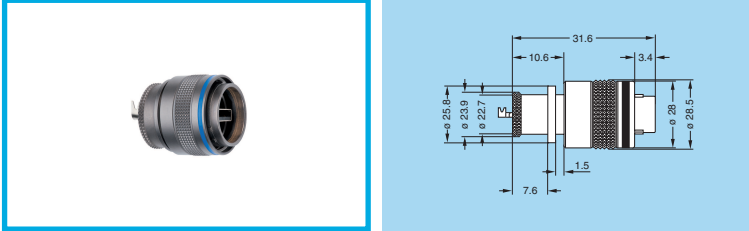
## Interconnections



## Models

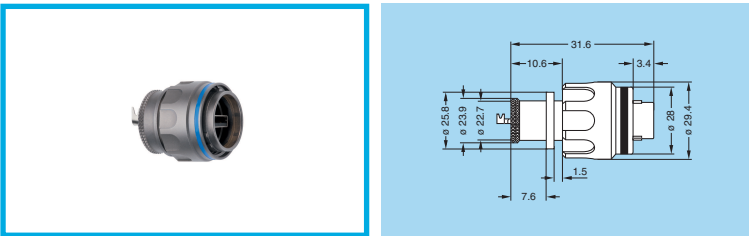
**FM•LM.U2A.XPAT**

Straight plug, key (W) or key (R) with knurled grip and mold stop – cable attach; solder



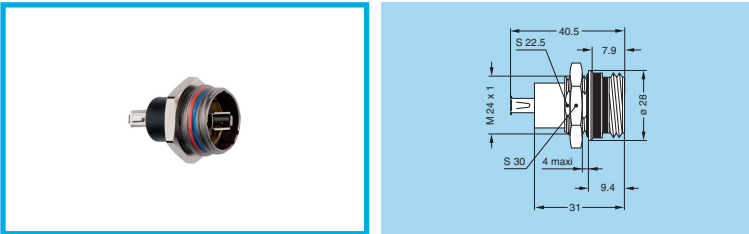
**FG•LM.U2A.XPAT**

Straight plug, key (W) or key (R) with arctic grip and mold stop – cable attach; solder



**EG•LM.U2A.XPP**

Fixed receptacle, female to female, nut fixing, key (W) or key (R) – USB connector socket



**EG•LM.U2A.XPL**

Fixed receptacle, nut fixing, key (W) or key (R) wire attach (solder)

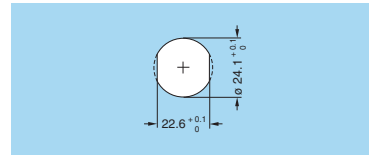


## Insert configuration

Male front view	Female front view	Reference	Number of contacts	Solder contact	AWG	Test voltage (kV rms) <sup>1)</sup> Contact-contact	Test voltage (kV rms) <sup>1)</sup> Contact-shell	Rated current (A) <sup>1)</sup>
		U2A	4	•	-	1.20	0.95	n.a.

Note: 1) Test voltage according to IEC 60512-2 test 4a.

## Cut-outs



Mounting nut torque (on panel)

Torque (Nm)
6.5

## Alignment Key and Polarized Keying System

Front view receptacle	Model	Nb of keys	Angles				Color code	Contact type	
			α	β	γ	δ		Plug	Receptacle
	•W	5	95°	115°	35°	25°	blue	male	female
	•R		105°	115°	30°	20°	yellow	male	female

## Cable Termination Side



## LEMO USA

P.O. Box 2408, Rohnert Park, CA 94927-2408  
Tel: 707.578.8811 800.444.5366 Fax: 707.578.0869  
info@lemousa.com