



Chipsmall Limited consists of a professional team with an average of over 10 year of expertise in the distribution of electronic components. Based in Hongkong, we have already established firm and mutual-benefit business relationships with customers from,Europe,America and south Asia,supplying obsolete and hard-to-find components to meet their specific needs.

With the principle of "Quality Parts,Customers Priority,Honest Operation,and Considerate Service",our business mainly focus on the distribution of electronic components. Line cards we deal with include Microchip,ALPS,ROHM,Xilinx,Pulse,ON,Everlight and Freescale. Main products comprise IC,Modules,Potentiometer,IC Socket,Relay,Connector.Our parts cover such applications as commercial,industrial, and automotives areas.

We are looking forward to setting up business relationship with you and hope to provide you with the best service and solution. Let us make a better world for our industry!



Contact us

Tel: +86-755-8981 8866 Fax: +86-755-8427 6832

Email & Skype: info@chipsmall.com Web: www.chipsmall.com

Address: A1208, Overseas Decoration Building, #122 Zhenhua RD., Futian, Shenzhen, China



Device Networking Access



Industrial 5/6-Port Unmanaged Ethernet Switches

EH2005/EH2006

EH2005-Fm (Multi-mode)



EH2005-Fs (Single-mode)

- 4 x 10/100BaseT(X) (RJ45)
- 1 x fiber port with ST (-Fm model) or SC (-Fs model)
- Broadcast storm protection
- Support IEEE 802.3/ 802.3u/ 802.3x
- 10/100M, Full/Half-Duplex, MDI/MDI-X auto-detection
- Local area transmit distance of 2 Km with Multi-mode Fiber connections
- Long-haul transmit distance of 20 Km with Single-mode Fiber connections
- Redundant dual DC power inputs
- Operating temperature ranges from 0~60°C
- Rugged high-strength plastic case
- DIN-Rail or wall mount support



EH2006

The EH Series include 5/6-port Ethernet switches that provide two solutions, one with 6 RJ-45 ports and the other with 4 RJ-45 ports and one optic ST/SC port for your industrial applications. These EH series have been designed for industrial environments, such as in hazardous locations that comply with FCC, TUV, UL, and CE standards.

EH series protect itself from receiving too many broadcast packets. During normal use, broadcast packets will be forwarded to all ports except the source port. However, EH series will discard broadcast or multicast packets if the number of those packets exceeds a threshold in a preset period of time. When the preset period expires (about 800ms), it will then resume receiving broadcast or multicast packets until the threshold is reached again.

EH series provide 2 redundant power inputs that can be connected simultaneously to wide-range DC power sources. If one of the power inputs fails, the other live source acts as a backup to provide the EH series' power needs automatically.

Industrial 5/6-Port Unmanaged Ethernet Switches



Specifications

Ethernet

Transmission Rate	10/100Mbps
Total Port	5 / 6
10/100Mbps	5 / 6
Connector	RJ-45 x 4+ Fm/Fs x 1 (EH2005-Fm/Fs) / RJ-45 x 6 (EH2006)
Auto MDI/MDI-X	Yes

Power

Input	DC 9 ~ 30V
Connector	3-pin 5.08mm pitch terminal block x 2
Consumption	5.4Watts Max

Environment

Operating	0°C ~ 60°C (32° ~ 140°F)
Storage	-20° ~ 70°C (-4°~ 185°F), 5 ~ 95%RH

Dimension

W x H x D	45mm x 90mm x 80mm
-----------	--------------------

MTBF(Hour)

Preceding	107296(EH2005-Fm/Fs) / 112092(EH2006)
-----------	---------------------------------------

Ordering Information

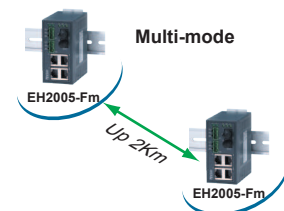
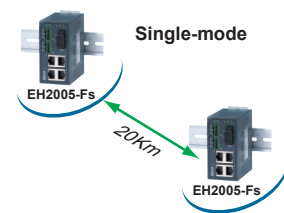
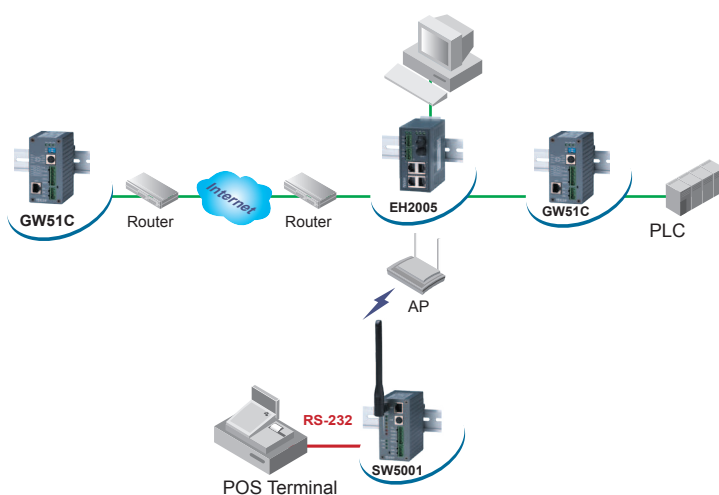
1P1EH2005FM001G	Industrial 5-port Unmanaged Ethernet Switch with EH2005-Fm
1P1EH2005FS001G	Industrial 5-port Unmanaged Ethernet Switch with EH2005-Fs
1P1EH200600001G	Industrial 6-port Unmanaged Ethernet Switch with 6x 10/100TX EH2006

Optional Accessories

Power Adapter	US315-12(US / EU): AC100~240V/DC12V 5.08mm pitch Terminal block
---------------	--

Optical Fiber Specifications

Speed	Fast Ethernet 100BaseFX	
Mode	Multi-mode	Single-mode
Connectors	ST	SC
Typical Distance	2Km(Max)	20Km(Max)
Cable Size Core /Cladding	62.5/125 um	9/125 um
Wavelength	1270(Min)~1360(Max) nm	1263(Min)~1360(Max) nm
Max. TX Power	-14 dBm	-8 dBm
Min. TX Power	-19 dBm	-15 dBm
RX Sensitivity	-34 dBm(Typical) -32 dBm(Max)	-32 dBm(Max)
Link Budget	----	----
Saturation / Overload	----	----
Typical Budget	----	----



Atop Technologies, Inc.

TEL : +886-3-5508137
 FAX : +886-3-5508131
 sales@atop.com.tw
 http : //www.atop.com.tw

Design and specification are subjected to change without notice.

All product names referenced herein are registered trademarks of their respective companies.

