



Chipsmall Limited consists of a professional team with an average of over 10 year of expertise in the distribution of electronic components. Based in Hongkong, we have already established firm and mutual-benefit business relationships with customers from,Europe,America and south Asia,supplying obsolete and hard-to-find components to meet their specific needs.

With the principle of “Quality Parts,Customers Priority,Honest Operation,and Considerate Service”,our business mainly focus on the distribution of electronic components. Line cards we deal with include Microchip,ALPS,ROHM,Xilinx,Pulse,ON,Everlight and Freescale. Main products comprise IC,Modules,Potentiometer,IC Socket,Relay,Connector.Our parts cover such applications as commercial,industrial, and automotives areas.

We are looking forward to setting up business relationship with you and hope to provide you with the best service and solution. Let us make a better world for our industry!



Contact us

Tel: +86-755-8981 8866 Fax: +86-755-8427 6832

Email & Skype: info@chipsmall.com Web: www.chipsmall.com

Address: A1208, Overseas Decoration Building, #122 Zhenhua RD., Futian, Shenzhen, China





Industrial 6-Port Unmanaged Fast Ethernet Switch

EH2306

Technology

- 10/100BaseT(X) (RJ45)
- Broadcast storm protection
- Support IEEE 802.3/ 802.3u/ 802.3x
- 10/100M, Full/Half-Duplex, MDI/MDI-X auto-detection

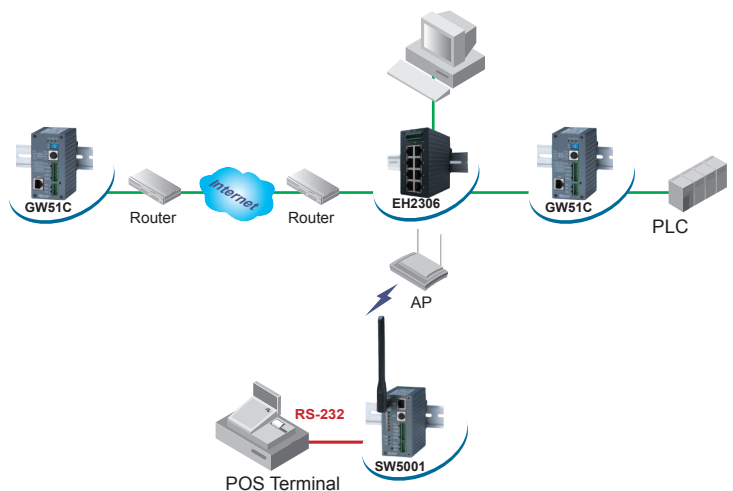
Reliability

- Redundant dual DC power inputs
- Operating temperature ranges from -10~70°C
- Rugged high-strength housing
- DIN-Rail or wall mounting ability

The EH2306 with 6 RJ-45 ports has a metal housing and is designed to work in the industrial environment, such as in hazardous locations that comply with CE, FCC, UL and RoHS standards.

The EH2306 protects itself from receiving too many broadcast packets. During normal use, broadcast packets will be forwarded to all ports except the source port. However, it will discard broadcast or multicast packets if the number of those packets exceeds a threshold in a preset period of time. When the preset period expires (about 800ms), it will then resume receiving broadcast or multicast packets until the threshold is reached again.

The EH2306 provides two redundant power inputs that can be connected simultaneously to wide-range DC power sources. If one of the power inputs failure, the other live source acts as a backup to provide the EH2306 the power it needs automatically.



Industrial 6-Port Unmanaged Fast Ethernet Switch



Specifications

Ethernet

Transmission rate	10/100Mbps
Ports	6
10/100Mbps	6
Connector	RJ-45 x 6
Auto MDI/MDI-X	Yes

Power

Input	DC 9~30V
Connector	Dual 3-pin 5.08mm pitch Terminal block
Consumption	5.4Watts Max

Environment

Operating	-10°C ~ 70°C (14°F ~ 158°F)
Storage	-40°C ~ 85°C (-40°F ~ 185°F), 5%~95% RH

Notes:

For UL policy the maximum operating temperature is 50°C, and the human body can tolerate maximum temperature is 70°C.

Dimension

W x H x D	45.2mm x 90mm x 78mm
-----------	----------------------

Approval

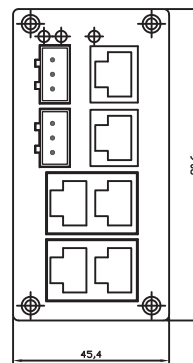
UL(Safety): UL60950-1, CSA C22.2 No.60950-1-03
 FCC(EMI): FCC 47 CFR Part15, Subpart B, Class A
 ICES-003, Class A
 ANSI C63.4-2003
 CE(EMI): EN 55022:1988+A1:2000+A2:2003, Class A
 EN 61000-3-2:2000, Class A
 EN 61000-3-3: 1995+A1:2001
 CE(EMS): EN 55024:1998+A1:2001+A2:2003
 IEC 61000-4-2:2001
 IEC 61000-4-3:2002+A1:2002
 IEC 61000-4-4:2004
 IEC 61000-4-5:2001
 IEC 61000-4-6:2003+A1:2004
 IEC 61000-4-8:2001
 IEC 61000-4-11:2004
 Shock: IEC 60068-2-27
 Free Fall: IEC 60068-2-32
 Vibration: IEC 60068-2-6
 High Altitude: Certified for 4000m altitude according to IEC 60068-2-13
 RoHS: Lead(Pb) Free
 MTBF: 455736 hrs(25°C) / 52.02 years(25°C)
 Warranty: 5 years

Optional Accessories

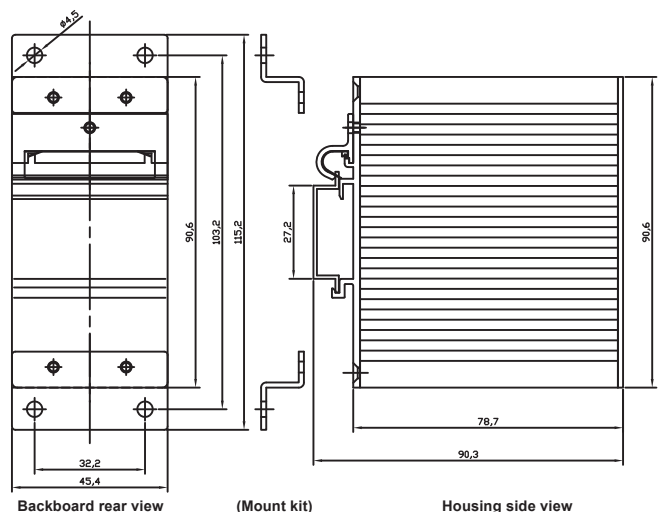
Power adapter UN315-1212 (US-Y) :
 Y-Type power adapter, 100~240VAC input,
 1.25A @ 12VDC output, US plug, LV6
 UNE315-1212 (EU-Y) :
 Y-Type power adapter, 100~240VAC input,
 1.25A @ 12VDC output, EU plug, LV6

Ordering information

1P1EH230600001G Industrial 6-port Unmanaged Fast Ethernet Switch with
EH2306 6x 10/100TX



Front-panel front view



Backboard rear view

(Mount kit)

Housing side view

Atop Technologies, Inc.

TEL : +886-3-5508137
 FAX : +886-3-5508131
 sales@atop.com.tw
 http://www.atop.com.tw

Design and specification are subjected to change without notice.
 All product names referenced herein are registered trademarks of their respective companies.

