



Chipsmall Limited consists of a professional team with an average of over 10 year of expertise in the distribution of electronic components. Based in Hongkong, we have already established firm and mutual-benefit business relationships with customers from,Europe,America and south Asia,supplying obsolete and hard-to-find components to meet their specific needs.

With the principle of “Quality Parts,Customers Priority,Honest Operation,and Considerate Service”,our business mainly focus on the distribution of electronic components. Line cards we deal with include Microchip,ALPS,ROHM,Xilinx,Pulse,ON,Everlight and Freescale. Main products comprise IC,Modules,Potentiometer,IC Socket,Relay,Connector.Our parts cover such applications as commercial,industrial, and automotives areas.

We are looking forward to setting up business relationship with you and hope to provide you with the best service and solution. Let us make a better world for our industry!



Contact us

Tel: +86-755-8981 8866 Fax: +86-755-8427 6832

Email & Skype: info@chipsmall.com Web: www.chipsmall.com

Address: A1208, Overseas Decoration Building, #122 Zhenhua RD., Futian, Shenzhen, China





Industrial 8/4-Port Unmanaged Fast Ethernet Switch

■ ■ EH2308-PR / EH2304-PR

RoHS compliant

Technology

- 10/100BaseT(X) (RJ45)
- Broadcast storm protection
- Support IEEE 802.3/ 802.3u/ 802.3x
- 10/100M, Full/Half-Duplex, MDI/MDI-X auto-detection

Reliability

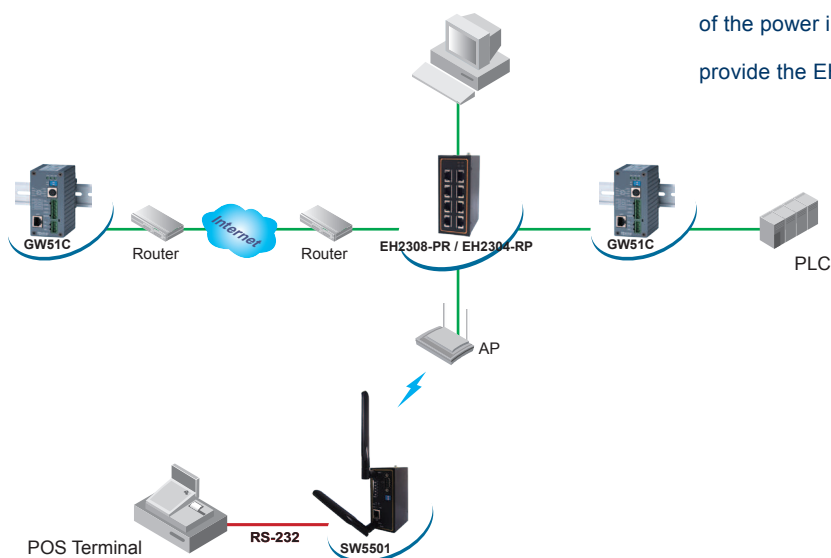
- Redundant dual DC power inputs
- Operating temperature ranges from -10°C ~ 70°C
- Rugged high-strength housing
- DIN-Rail or wall mounting ability
- Slim-size housing (EH2304-PR)

EH2308-PR/EH2304-PR are with 8/4 RJ-45 ports for your industrial applications. They are designed to work in the industrial environment, such as in hazardous locations and compliant with CE, FCC, UL, and RoHSII standards.

EH2308-PR /EH2304-PR protect themselves from receiving over broadcast packets.

During normal use, broadcast packets will be forwarded to all ports, except the source port. However, it will discard broadcast or multicast packets if the number of those packets exceeds a threshold in a preset period of time. When the preset period expires (about 800ms), it will then resume receiving broadcast or multicast packets until the threshold is reached again.

EH2308-PR/EH2304-PR provide two redundant power inputs that can be connected simultaneously to wide-range DC power sources. If one of the power inputs failure, the another live source acts as a backup to provide the EH2308-PR/EH2304-PR power input automatically.



Industrial 8/4-Port Unmanaged Fast Ethernet Switch

 **EH2308-PR / EH2304-PR**

Specifications

Technology

| | |
|------------------------|--|
| Standards | IEEE802.3, 802.3u, 802.3x |
| Processing Type | Store and Forward |
| Flow Control | IEEE802.3x flow control, backpressure flow control |

Interface

| | |
|-----------------------|---|
| RJ-45 Ports | 10/100BaseT(X) auto negotiation speed Full/Half-duplex mode, and auto MDI/MDI-X connection |
| LED Indicators | Power, 10/100M |

Power

| | |
|------------------------------------|---|
| Input | 9 ~ 48 VDC, Dual inputs |
| Consumption | EH2308-PR 6.4 Watts Max. / EH2304-PR 4.0 Watts Max. |
| Connector | Removable 5-pin Terminal Block for power input |
| Reverse Polarity Protection | Present |

Environment

| | |
|----------------------------------|--------------------------------|
| Operating | -10°C ~ 70°C (14°F ~ 158°F) |
| Storage | -40°C ~ 85°C (-40°F ~ 185°F) |
| Ambient Relative Humidity | 5%~95% non-condensing |

Physical

| | |
|-----------------------------|--|
| Housing | IP30 protection, metal housing |
| Dimension(W x H x D) | EH2308-PR 45.3mm x 110mm x 89.6mm EH2304-PR 22.5mm x 110mm x 78mm |
| Weight | EH2308-PR 460g / EH2304-PR 320g |

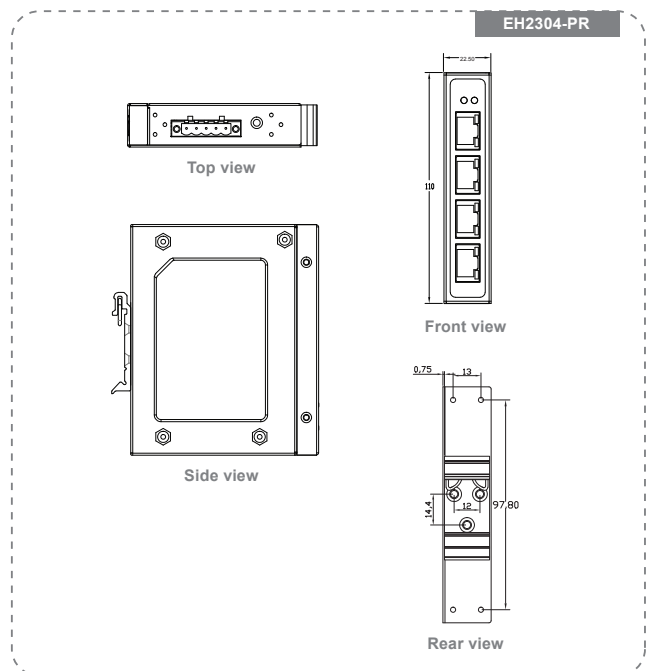
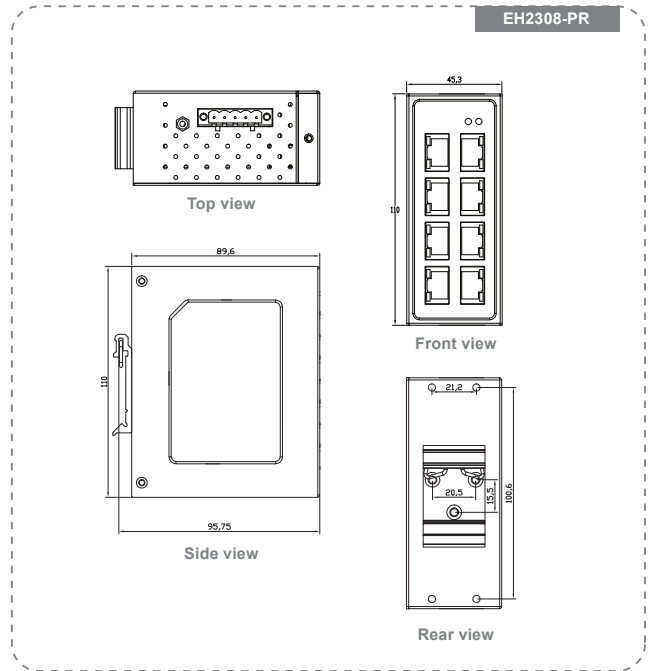
Approval

| | |
|-------------------|--|
| UL(Safety) | UL60950-1 2nd Ed. /CSA C22.2 No.60950-1-07 2nd Ed. |
| FCC(EMI) | FCC 47 CFR Part15, Subpart B, Class A |
| CE(EMI) | European Standard EN 55022:2010 |
| CE(EMS) | EN 55024: 2010 IEC 61000-4-2: 2008 IEC 61000-4-3: 2010 IEC 61000-4-4: 2012 IEC 61000-4-5: 2005 IEC 61000-4-6: 2008 IEC 61000-4-8: 2009 IEC 61000-4-11: 2004 |
| Shock | IEC 60068-2-27 |
| Drop | ISTA Test Procedure 2A |
| Vibration | IEC 60068-2-64 |
| RoHS | Lead(Pb) Free |
| MTBF | EH2304-PR 673300 hrs/ 76.86 years EH2308-PR 515600 hrs/ 58.86 years |

| | |
|-----------------|---------|
| Warranty | 5 years |
|-----------------|---------|

Optional Accessories

| | |
|----------------------|---|
| Power adapter | UN315-1212 (US-Y): Y-Type power adapter, 100~240VAC input, 1.25A @ 12VDC output, US plug, LV6 UNE315-1212 (EU-Y): Y-Type power adapter, 100~240VAC input, 1.25A @ 12VDC output, EU plug, LV6 |
|----------------------|---|



Atop Technologies, Inc.

TEL : +886-3-5508137
FAX : +886-3-5508131
sales@atop.com.tw
http://www.atop.com.tw

Design and specification are subjected to change without notice.
All product names referenced herein are registered trademarks of their respective companies.

