



Chipsmall Limited consists of a professional team with an average of over 10 year of expertise in the distribution of electronic components. Based in Hongkong, we have already established firm and mutual-benefit business relationships with customers from,Europe,America and south Asia,supplying obsolete and hard-to-find components to meet their specific needs.

With the principle of “Quality Parts,Customers Priority,Honest Operation,and Considerate Service”,our business mainly focus on the distribution of electronic components. Line cards we deal with include Microchip,ALPS,ROHM,Xilinx,Pulse,ON,Everlight and Freescale. Main products comprise IC,Modules,Potentiometer,IC Socket,Relay,Connector.Our parts cover such applications as commercial,industrial, and automotives areas.

We are looking forward to setting up business relationship with you and hope to provide you with the best service and solution. Let us make a better world for our industry!



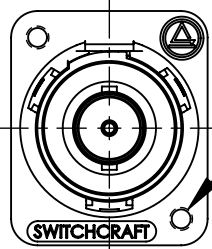
Contact us

Tel: +86-755-8981 8866 Fax: +86-755-8427 6832

Email & Skype: info@chipsmall.com Web: www.chipsmall.com

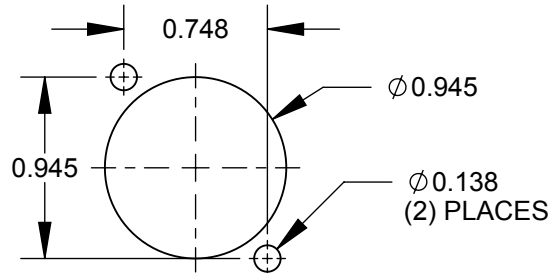
Address: A1208, Overseas Decoration Building, #122 Zhenhua RD., Futian, Shenzhen, China





M3 x 0.5
METRIC THREAD
(2) PLACES

EHBNC2M3 & EHBNC2BM3



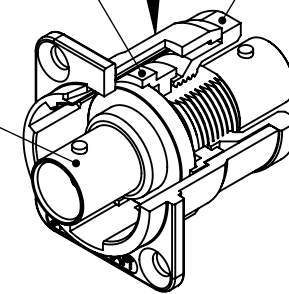
**RECOMMENDED
PANEL CUT-OUT**

STANDARD E SERIES HOUSING
SEE TABLE FOR FINISH

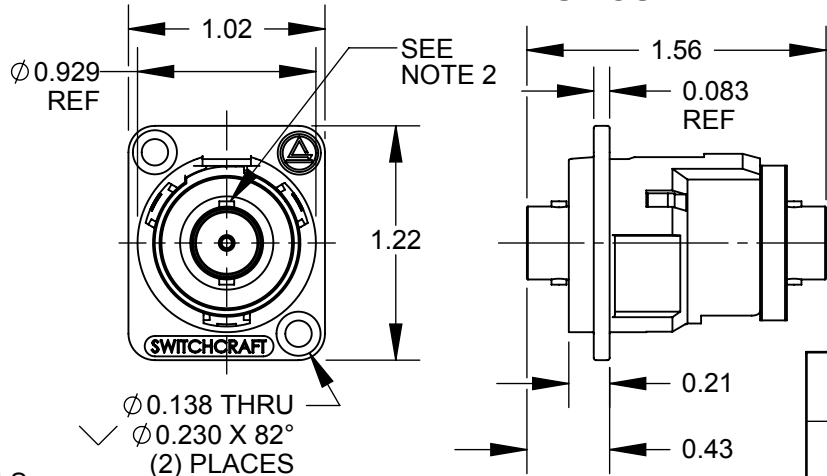
HOUSING INSERT

RETAINING NUT

BNC-TO-BNC
JACK



EHBNC2 SHOWN



NOTES:

1. MATERIALS:

- HOUSING - ZINC ALLOY
- HOUSING INSERT - THERMOPLASTIC, BLACK
- RETAINING NUT - THERMOPLASTIC, BLACK
- BNC JACK - COPPER ALLOY, NICKEL PLATED

E 2. ORIENTATION OF BAYONET POSTS $\pm 10^\circ$ FROM VERTICAL.

3. THESE PRODUCTS ARE RoHS COMPLIANT.

PART NUMBER	HOUSING FINISH	MOUNTING HOLES
EHBNC2	NICKEL PLATED	COUNTERSINK FOR #4 FLAT HEAD SCREWS
EHBNC2B	BLACK CHROME	COUNTERSINK FOR #4 FLAT HEAD SCREWS
EHBNC2M3	NICKEL PLATED	M3 x 0.5 THREAD
EHBNC2BM3	BLACK CHROME	M3 x 0.5 THREAD

CUSTOMER DRAWING

					THIS DRAWING DESCRIBES A DESIGN CONSIDERED PROPRIETARY IN NATURE, DEVELOPED AND MANUFACTURED BY SWITCHCRAFT INC. AND IS RELEASED ON A CONFIDENTIAL BASIS FOR IDENTIFICATION PURPOSES ONLY.						
					SIZE	WIDTH	MULT	LBS/M	TEMPER		
					FINISH			MATERIAL			
					SPEC No.			SPEC No.			
					FIRST USED ON		SCALE 1:1				
E	27546	7-24-15	TO	TJK	DATE DRAWN	BY	CHKD	APVD	Switchcraft [®]		
D	27482	04/20/15	PC	TJK	5/5/03	MA	MA	MA			
C	26415	7/17/09	RS	TJK							
REV	ECO NUMBER	DATE	BY	APVD	NAME E SERIES CONNECTOR, BNC FEEDTHROUGH, RoHS			PART No.	REV		
REVISIONS					DO NOT SCALE DRAWING					EHBNC2 SERIES	E