



Chipsmall Limited consists of a professional team with an average of over 10 year of expertise in the distribution of electronic components. Based in Hongkong, we have already established firm and mutual-benefit business relationships with customers from,Europe,America and south Asia,supplying obsolete and hard-to-find components to meet their specific needs.

With the principle of “Quality Parts,Customers Priority,Honest Operation,and Considerate Service”,our business mainly focus on the distribution of electronic components. Line cards we deal with include Microchip,ALPS,ROHM,Xilinx,Pulse,ON,Everlight and Freescale. Main products comprise IC,Modules,Potentiometer,IC Socket,Relay,Connector.Our parts cover such applications as commercial,industrial, and automotives areas.

We are looking forward to setting up business relationship with you and hope to provide you with the best service and solution. Let us make a better world for our industry!



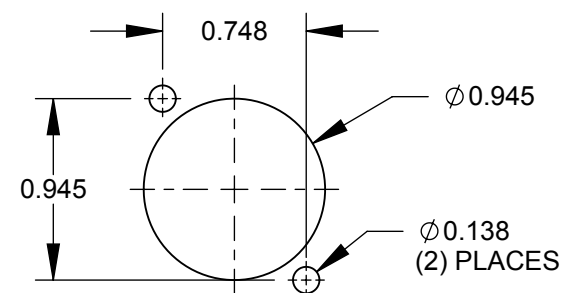
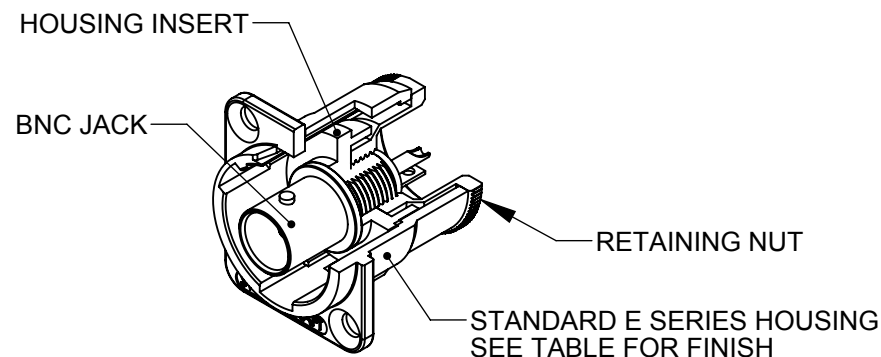
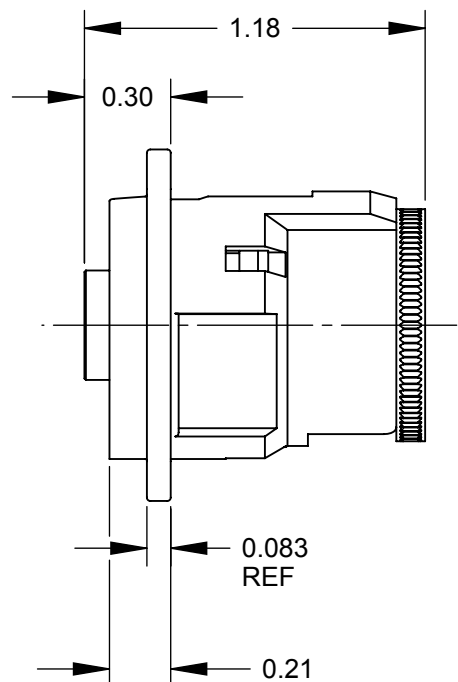
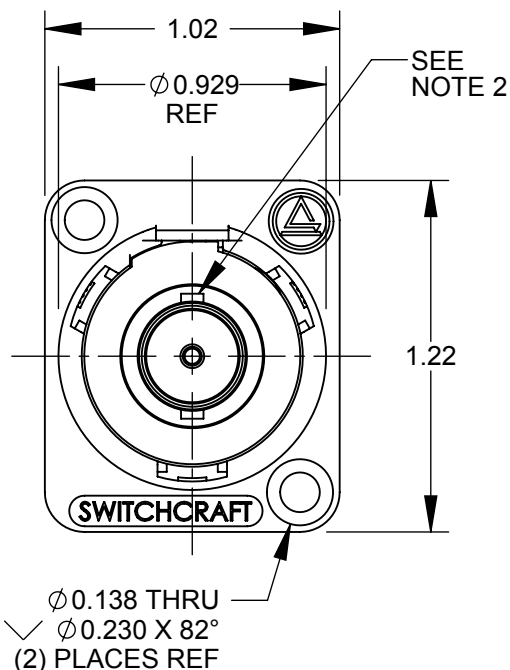
Contact us

Tel: +86-755-8981 8866 Fax: +86-755-8427 6832

Email & Skype: info@chipsmall.com Web: www.chipsmall.com

Address: A1208, Overseas Decoration Building, #122 Zhenhua RD., Futian, Shenzhen, China





RECOMMENDED
PANEL CUT-OUT

NOTES:

1. MATERIALS:
HOUSING - ZINC ALLOY
HOUSING INSERT - THERMOPLASTIC, BLACK
RETAINING NUT - COPPER ALLOY, NICKEL PLATED
BNC JACK - COPPER ALLOY, NICKEL PLATED
2. ORIENTATION OF BAYONET POSTS $\pm 10^\circ$ FROM VERTICAL.
3. THESE PRODUCTS ARE RoHS COMPLIANT.

PART NUMBER	HOUSING FINISH
EHBNCS	NICKEL
EHBNCSB	BLACK CHROME

CUSTOMER DRAWING

						THIS DRAWING DESCRIBES A DESIGN CONSIDERED PROPRIETARY IN NATURE, DEVELOPED AND MANUFACTURED BY SWITCHCRAFT INC. AND IS RELEASED ON A CONFIDENTIAL BASIS FOR IDENTIFICATION PURPOSES ONLY.													
F	27546	7-24-15	TO	TJK	UNLESS OTHERWISE SPECIFIED 1. ALL DIMENSIONS IN INCHES - TWO PLACE DECIMALS ±0.02 - THREE PLACE DECIMALS ±0.005	SIZE	WIDTH		MULT		LBS/M		TEMPER						
E	27482	04/20/15	PC	TJK		FINISH					MATERIAL								
D	26634	10/08/10	JEB	TJK		SPEC No.					SPEC No.								
C	26415	7/17/09	RS	TJK		FIRST USED ON				SCALE 1.5:1		Switchcraft®							
B	24827	10/12/04	JL	MA		DATE DRAWN	BY	CHKD	APVD										
A	24626	1/27/04	JL	MA		9/25/02	MA	MA 10/31/03	MA 10/31/03										
											SHEET 1 OF 1								
REV	ECO NUMBER	DATE	BY	APVD		NAME E SERIES CONNECTOR, BNC, SOLDER TERMINATION, RoHS					PART No. EHBNCSC SERIES					REV F			
REVISIONS					DO NOT SCALE DRAWING														

SolidWorks CAD File

