



Chipsmall Limited consists of a professional team with an average of over 10 year of expertise in the distribution of electronic components. Based in Hongkong, we have already established firm and mutual-benefit business relationships with customers from,Europe,America and south Asia,supplying obsolete and hard-to-find components to meet their specific needs.

With the principle of "Quality Parts,Customers Priority,Honest Operation,and Considerate Service",our business mainly focus on the distribution of electronic components. Line cards we deal with include Microchip,ALPS,ROHM,Xilinx,Pulse,ON,Everlight and Freescale. Main products comprise IC,Modules,Potentiometer,IC Socket,Relay,Connector.Our parts cover such applications as commercial,industrial, and automotives areas.

We are looking forward to setting up business relationship with you and hope to provide you with the best service and solution. Let us make a better world for our industry!



## Contact us

Tel: +86-755-8981 8866 Fax: +86-755-8427 6832

Email & Skype: info@chipsmall.com Web: www.chipsmall.com

Address: A1208, Overseas Decoration Building, #122 Zhenhua RD., Futian, Shenzhen, China





## Industrial 8-port Unmanaged Gigabit Ethernet Switch

■ ■ EHG2308  
RoHS compliant

### Technology

- 10/100/1000BaseT(X) (RJ45)
- Broadcast storm protection
- Support IEEE 802.3/ 802.3u/ 802.3x
- 10/100/1000M Full/Half-Duplex, MDI/MDI-X auto-detection

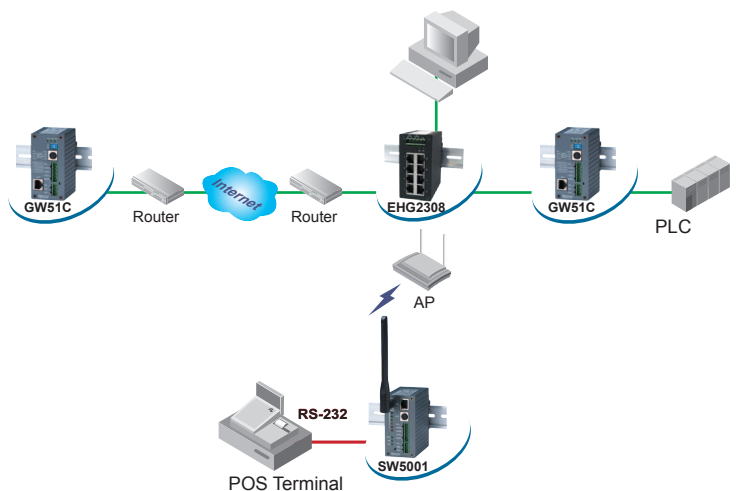
### Reliability

- Redundant dual DC power inputs
- Operating temperature ranges from -10~70°C
- Rugged high-strength housing
- DIN-Rail or wall mounting ability

EHG2308 with 8 RJ-45 Gigabit ports for your industrial applications. It designs to work in the industrial environment, such as in hazardous locations that comply with CE, FCC, UL, IP50 and RoHS standards.

EHG2308 protects itself from receiving too many broadcast packets. During normal use, broadcast packets will be forwarded to all ports except the source port. However, it will discard broadcast or multicast packets if the number of those packets exceeds a threshold in a preset period of time. When the preset period expires (about 800ms), it will then resume receiving broadcast or multicast packets until the threshold is reached again.

EHG2308 provides two redundant power inputs that can be connected simultaneously to wide-range DC power sources. If one of the power inputs failure, the other live source acts as a backup to provide the EHG2308 power needs automatically.



# Industrial 8-port Unmanaged Gigabit Ethernet Switch



## Specifications

### Technology

<b>Standards</b>	IEEE802.3, 802.3u, 802.3ab, 802.3x
<b>Processing Type</b>	Store and Forward
<b>Flow Control</b>	IEEE802.3x full duplex, back pressure flow control
<b>Jumbo Frame Size</b>	Up to 9216 byte

### Interface

<b>RJ45 Ports</b>	10/100/1000BaseT(X) auto negotiation speed Full/Half-duplex mode, and auto MDI/MDI-X connection
-------------------	--

<b>LED Indicators</b>	Power, LAN(10/100/1000M)
-----------------------	--------------------------

### Power Management

<b>Input Voltage</b>	9-48 VDC(0.45A max), Dual inputs
<b>Consumption</b>	4.05 Watts Max
<b>Connector</b>	Removable 5-pin Terminal Block for power input
<b>Reverse Polarity Protection</b>	Present

### Physical Characteristics

<b>Housing</b>	IP30 protection, metal housing
<b>Dimension(W x H x D)</b>	45.2mm x 90mm x 78mm
<b>Weight</b>	255g

### Environmental Limits

<b>Operating Temperature</b>	-10°C~70°C (14°F~158°F)
<b>Storage Temperature</b>	-40°C~85°C (-40°F~185°F)
<b>Ambient Relative Humidity</b>	5%~95% non-condensing

### Regulatory Approvals

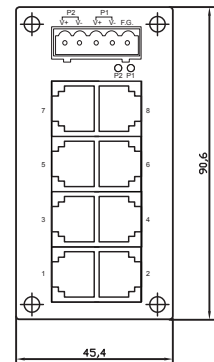
<b>UL(Safety)</b>	UL60950-1 2nd Ed. /CSA C22.2 No.60950-1-07 2nd Ed.
<b>FCC(EMI)</b>	FCC Part 15, Subpart B, Class A
<b>CE(EMI)</b>	European Standard EN55032:2012+AC:2013 Class A. EN61000-3-2:2014, EN 61000-3-3:2013
<b>CE(EMS)</b>	EN55024:2010(IEC 61000-4-2:2008) IEC61000-4-3:2006/A1:2007/A2:2010, IEC 61000-4-4:2012 IEC 61000-4-5:2014, IEC 61000-4-6:2013 IEC 61000-4-8 :2009, IEC 61000-4-11:2004
<b>Shock</b>	IEC 60068-2-27
<b>Drop</b>	IEC 60068-2-32(ISTA Test Procedure 2A)
<b>Vibration</b>	IEC 60068-2-64
<b>RoHS</b>	Lead(Pb) Free
<b>MTBF</b>	472359.98 hrs(25°C) / 53.92 years(25°C)
<b>IP Protection</b>	IP30 IEC/EN60529
<b>Warranty</b>	5 years

### Optional Accessories

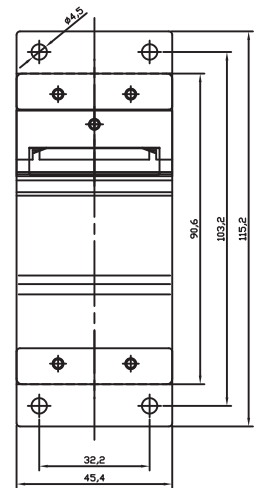
AD17-24C (US): AC100V~240V/DC24V for terminal block, US adapter
AD17-24D (EU): AC100V~240V/DC24V for terminal block, EU adapter
US315-12(US/EU) : AC100~240V/DC12V ; 5.08mm pitch terminal block
DIN-Rail mount, Wall mount

### Ordering Information

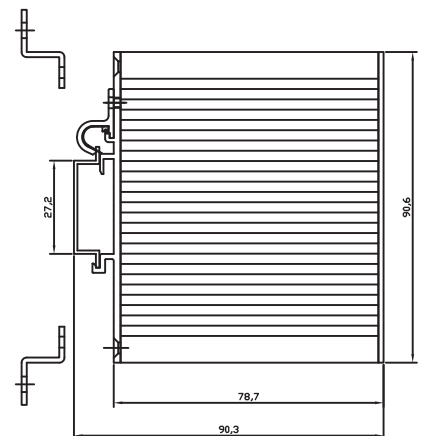
Model Name	Port Interface	100BaseFX	
		Multi Mode ST Connector	Single Mode SC Connector
Extended Temperature (-10°C ~ 70°C)	10/100/1000BaseT(X)	----	----
EHG2308	8	----	----



Front-panel front view



Backboard rear view



(Mount kit)

Housing side view

### Atop Technologies, Inc.

TEL : +886-3-5508137  
 FAX : +886-3-5508131  
 sales@atop.com.tw  
 http://www.atop.com.tw

Design and specification are subjected to change without notice.  
 All product names referenced herein are registered trademarks of their respective companies.

