



Chipsmall Limited consists of a professional team with an average of over 10 year of expertise in the distribution of electronic components. Based in Hongkong, we have already established firm and mutual-benefit business relationships with customers from,Europe,America and south Asia,supplying obsolete and hard-to-find components to meet their specific needs.

With the principle of “Quality Parts,Customers Priority,Honest Operation,and Considerate Service”,our business mainly focus on the distribution of electronic components. Line cards we deal with include Microchip,ALPS,ROHM,Xilinx,Pulse,ON,Everlight and Freescale. Main products comprise IC,Modules,Potentiometer,IC Socket,Relay,Connector.Our parts cover such applications as commercial,industrial, and automotives areas.

We are looking forward to setting up business relationship with you and hope to provide you with the best service and solution. Let us make a better world for our industry!



Contact us

Tel: +86-755-8981 8866 Fax: +86-755-8427 6832

Email & Skype: info@chipsmall.com Web: www.chipsmall.com

Address: A1208, Overseas Decoration Building, #122 Zhenhua RD., Futian, Shenzhen, China



AUDIO VIDEO DATA PANEL CONNECTORS



The EH Series by Switchcraft® is a complete line of audio, video, and data connectors built into standard panel mount XLR housings. Custom combinations of EH Series connectors can be quickly loaded into any of our Q G® Series panels. Once mounted, connecting your equipment to the back of an EH Series connector is fast and easy. Most connectors are feedthru, which means standard cabling is simply plugged into the back of your gear, then plugged into the back of the EH Series connector. For those EH Series connectors that are not feedthru, solder lugs are clearly marked for simple, secure solder connections. All EH Series connectors are available individually bagged with mounting screws.

Q-G® Series panels come standard as 1RU (1x16), 1.5RU (1x16), or 2RU (2x16). 1RU and 1.5RU versions allow for any combination of up to 16 EH Series connectors to be loaded into the panel. The 2RU version can accommodate up to 32 EH Series connectors. Every Q G® Series panel includes quick change designation strips for easy connector identification.

Switchcraft's EH Series is the fastest and most versatile way to create a custom panel or wall plate perfectly suited to meet the needs of any studio, broadcast facility, or systems integrator. Customize your studio, make it easy to access your I/O's, and increase the lifespan of expensive pieces of equipment u

[Click to view the New Product Bulletin for the EH Series](#)

Broadcast Series

EH Connectors: USB, Firewire, SVHS, 9pin, and 15pin HD Dsub, 3.5mm Stereo, BNC, and RCA

E & EH Series Part Number Scheme

| Connector Type | Part No. Prefix | Solder Contact | Feedthru | Black Finish | Bagged w/4-40 Mounting Screws |
|------------------------------------|-----------------|----------------|----------|--------------|-------------------------------|
| 3.5MM Mono | EH35MMM | SC | N/A | B | PKG |
| 3.5MM Stereo | EH35MMS | SC | N/A | B | PKG |
| SVHS | EHSVHS | N/A | 2 | B | PKG |
| PS/2 (AKA: mouse port / 6 Pin Din) | EH6MD | N/A | 2 | B | PKG |
| Firewire (EEE1394) Straight Wired | EHFW | N/A | 2 | B | PKG |
| Firewire EEE1394 Cross Wired | EHFWX | N/A | 2 | B | PKG |
| RCA | EHRCA | N/A | 2 | B | PKG |
| BNC | EBBNC | SC | 2 | B | PKG |
| ~ BNC (Recessed Front) | EBBNC2R | N/A | --- | B | PKG |
| BNC to RCA | EBBNCRCA | --- | --- | B | PKG |
| RCA to BNC | EHRCABNC | --- | --- | B | PKG |
| USB A to B | EHUSBAB | --- | --- | B | PKG |
| USB B to A | EHUSBBA | --- | --- | B | PKG |
| 9 Pin DSUB Male to Male | EHDB9MM | --- | --- | B | --- |
| + 9 Pin DSUB Male to Female | EHDB9MF | --- | --- | B | --- |
| 9 Pin DSUB Female to Female | EHDB9FF | --- | --- | B | --- |
| 15 Pin HD DSUB Male to Male | EHHD15MM | --- | --- | B | --- |
| + 15 Pin HD DSUB Male to Female | EHHD15MF | --- | --- | B | --- |
| 15 Pin HD DSUB Female to Female | EHHD15FF | --- | --- | B | --- |

+ Reversible gender.
~ Connector is flush with the face of the housing.
If no "B" suffix, all connectors come with nickel housing.
If no "PKG" suffix, all connectors come bulk.

Additional E & EH Series Connectors and Components



[Click here for full line of E Series XLRs](#)

| Connector Type XLRs | Part No. Prefix | Solder Contact | Black Finish | Gold Pin | Bagged w/4-40 Mounting Screws |
|------------------------|-----------------|----------------|--------------|----------|-------------------------------|
| XLR Female 3 Pin | E3F | SC | B | AU | PKG |
| XLR Male 3 Pin | E3M | SC | B | AU | PKG |
| XLR Female 4 Pin | E4F | SC | B | AU | PKG |
| XLR Male 4 Pin | E4M | SC | B | AU | PKG |



[Click here for 1/4" Jacks](#)

| Connector Type 1/4" Jacks | Part No. (Silver Finish) | Part No. (Black Finish) |
|------------------------------|--------------------------|-------------------------|
| 1/4" Mono Locking Jack | E111L | E111BL |
| 1/4" Stereo Locking Jack | E112BL | E112BLB |

| Accessory Blank Cover | Part Number |
|--|------------------------|
| Cover for E & EH Series (Black anodized aluminum) Comes with 4-40 Screws | ECPPKG (Black Only) |

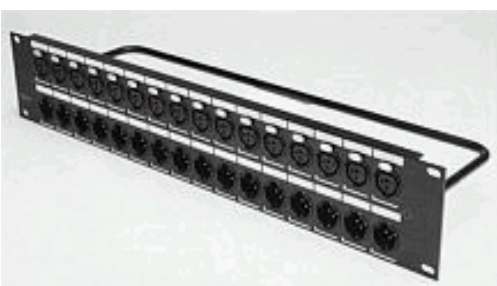
| Accessory Empty EH Kit Housing | Finish | Part No. |
|-----------------------------------|--------|----------|
| For BPJJ0 Series RCA Bulkheads | Nickel | EH1PKG |
| (Comes with 4-40 Screws) | Black | EHB1PKG |

| Empty EH Rack Panels | Rack Height | No. of Knockouts | Tapped 4-40 Holes |
|----------------------|-------------|------------------|-------------------|
| QGPK1B | 1RU | 1 X 16 | NO |
| QGPK1B440 | 1RU | 1 x 16 | YES |
| QGPK2B | 1.5RU | 1 X 16 | NO |
| QGPK2B440 | 1.5RU | 1 X 16 | YES |
| QGPK3B | 2RU | 2 X 16 | NO |
| QGPK3B440 | 2RU | 2 X 16 | YES |
| HPCPK1B | 1RU | 1 X 12 | NO |
| HPCPK1B440 | 1RU | 1 X 12 | YES |
| HPCPK3B | 2RU | 2 X 12 | NO |
| HPCPK3B440 | 2RU | 2 X 12 | YES |

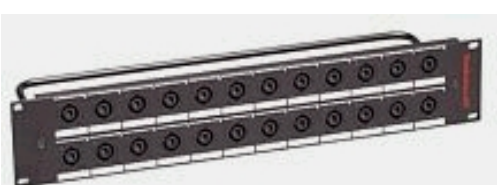
Note: All panels come with cable tie bar



Unloaded 1 RU EH Rack Panel



[Click here for loaded XLR Panels](#)



[Click here for loaded HPC panels](#)