



Chipsmall Limited consists of a professional team with an average of over 10 year of expertise in the distribution of electronic components. Based in Hongkong, we have already established firm and mutual-benefit business relationships with customers from,Europe,America and south Asia,supplying obsolete and hard-to-find components to meet their specific needs.

With the principle of “Quality Parts,Customers Priority,Honest Operation,and Considerate Service”,our business mainly focus on the distribution of electronic components. Line cards we deal with include Microchip,ALPS,ROHM,Xilinx,Pulse,ON,Everlight and Freescale. Main products comprise IC,Modules,Potentiometer,IC Socket,Relay,Connector.Our parts cover such applications as commercial,industrial, and automotives areas.

We are looking forward to setting up business relationship with you and hope to provide you with the best service and solution. Let us make a better world for our industry!



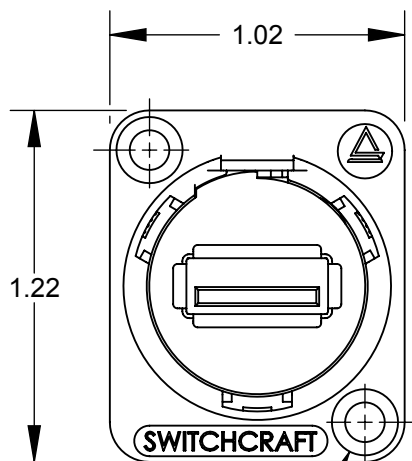
## Contact us

Tel: +86-755-8981 8866 Fax: +86-755-8427 6832

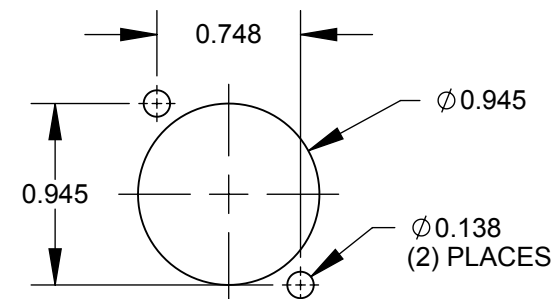
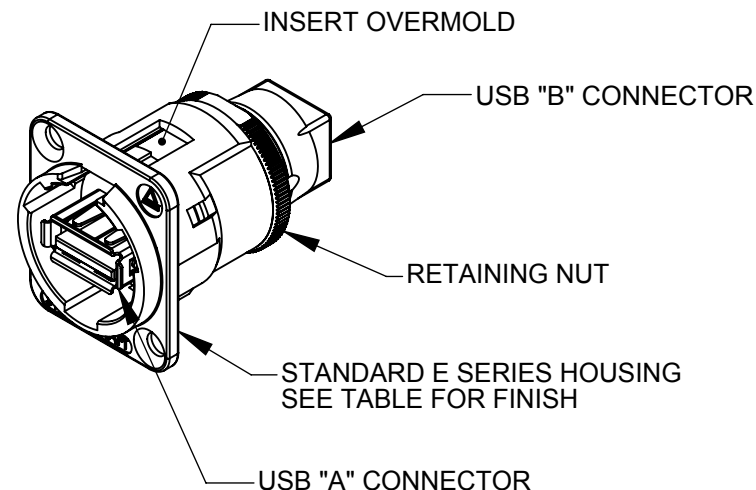
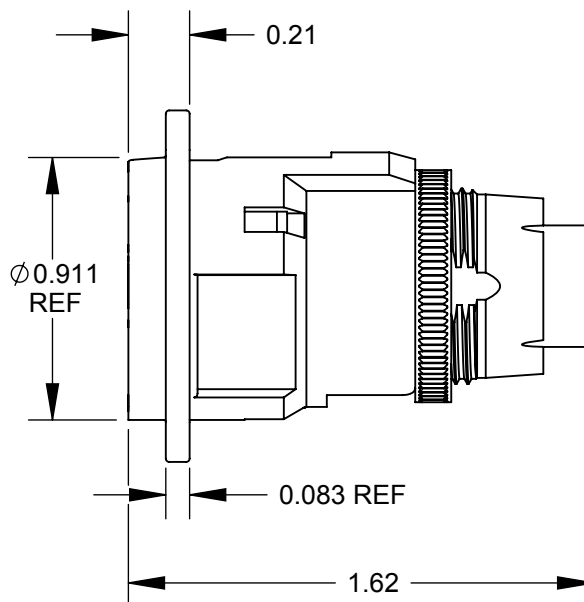
Email & Skype: [info@chipsmall.com](mailto:info@chipsmall.com) Web: [www.chipsmall.com](http://www.chipsmall.com)

Address: A1208, Overseas Decoration Building, #122 Zhenhua RD., Futian, Shenzhen, China





✓  $\phi 0.138$  THRU  
 $\phi 0.230 \times 82^\circ$   
 (2) PLACES  
 REF



#### NOTES:

- MATERIALS:**  
 INSERT OVERMOLD - THERMOPLASTIC, BLACK  
 RETAINING NUT - BRASS, NICKEL PLATED  
 HOUSING - ZINC ALLOY

- THIS PRODUCT IS RoHS COMPLIANT.

PART NUMBER	HOUSING FINISH
EHUSBABX	NICKEL
EHUSBABBX	BLACK CHROME

RECOMMENDED  
PANEL CUT-OUT

**CUSTOMER DRAWING**

★ STAR SYMBOL DENOTES CRITICAL DIMENSION

UNLESS OTHERWISE SPECIFIED  
 1. ALL DIMENSIONS IN INCHES  
 - TWO PLACE DECIMALS  $\pm 0.01$   
 - THREE PLACE DECIMALS  $\pm 0.005$   
 - ANGLES  $\pm 1^\circ$

THIS DRAWING DESCRIBES A DESIGN CONSIDERED PROPRIETARY IN NATURE, DEVELOPED AND MANUFACTURED BY SWITCHCRAFT INC. AND IS RELEASED ON A CONFIDENTIAL BASIS FOR IDENTIFICATION PURPOSES ONLY.

					<div>☆ STAR SYMBOL DENOTES CRITICAL DIMENSION</div>	THIS DRAWING DESCRIBES A DESIGN INVENTED OR OTHERWISE OBTAINED BY SWITCHCRAFT INC. AND IS RELEASED ON A CONFIDENTIAL BASIS FOR IDENTIFICATION PURPOSES ONLY.					
					<div>UNLESS OTHERWISE SPECIFIED</div> <div>1. ALL DIMENSIONS IN INCHES</div> <div>- TWO PLACE DECIMALS ±0.01</div> <div>- THREE PLACE DECIMALS ±0.005</div> <div>- ANGLES ±1°</div>	SIZE	WIDTH	MULT	LBS/M	TEMPER	
						FINISH			MATERIAL		
						SPEC No.			SPEC No.		
						FIRST USED ON		SCALE		<div>Switchcraft®</div>	
								1.5:1			
A	26076	7/15/06	RS	TJK		DATE DRAWN	BY	CHKD	APVD		
						5/5/09	RS	RS	TJK		
								5/5/09	7/15/09	SHEET 1 OF 1	
REV	ECO NUMBER	DATE	BY	APVD		NAME			PART No.		REV
						E SERIES CONNECTOR, USB A FEMALE TO B FEMALE, RoHS			EHUSBAB_X SERIES		A
REVISIONS											
					DO NOT SCALE DRAWING						

SolidWorks CAD File

