



Chipsmall Limited consists of a professional team with an average of over 10 year of expertise in the distribution of electronic components. Based in Hongkong, we have already established firm and mutual-benefit business relationships with customers from,Europe,America and south Asia,supplying obsolete and hard-to-find components to meet their specific needs.

With the principle of “Quality Parts,Customers Priority,Honest Operation,and Considerate Service”,our business mainly focus on the distribution of electronic components. Line cards we deal with include Microchip,ALPS,ROHM,Xilinx,Pulse,ON,Everlight and Freescale. Main products comprise IC,Modules,Potentiometer,IC Socket,Relay,Connector.Our parts cover such applications as commercial,industrial, and automotives areas.

We are looking forward to setting up business relationship with you and hope to provide you with the best service and solution. Let us make a better world for our industry!



Contact us

Tel: +86-755-8981 8866 Fax: +86-755-8427 6832

Email & Skype: info@chipsmall.com Web: www.chipsmall.com

Address: A1208, Overseas Decoration Building, #122 Zhenhua RD., Futian, Shenzhen, China



EKI-3725

EKI-3728

5-port Gigabit Unmanaged Industrial Ethernet Switch

8-port Gigabit Unmanaged Industrial Ethernet Switch

NEW



Features

- Supports IEEE 802.3az, Energy Efficient Ethernet standard
 - Automatically powers down ports that have no link
 - Budgets power output for different Ethernet cable length
- Support IEEE 802.1p QoS- VIP port setting
 - Ensures time sensitive data gets delivered efficiently, even during bursts of high data traffic.
 - Ensures video streaming through switch with high priority.
- Supports 9,216 Byte Jumbo Frames
- Supports redundant 12 ~ 48 V_{DC} power input and P-Fail relay
- In Loop detection

Introduction

The EKI-3725/3728 are a new generation products with green Ethernet design. They feature green solutions that automatically adjust power consumption by detecting the link status and cable length. Designed with 1/2 "VIP" ports to get optimal bandwidth for media traffics through VIP ports users can experience better performance of multimedia streaming preferred through prioritized bandwidth setting. The devices come with compact metal and plastic housing that is IP40 rated to protect against dusty industrial environments. The wide power input power (8.4 to 52.4 V_{DC}) is dedicated to operate in areas of unstable power and rugged environments. It also provides an event alarm and in the event of a power failure and connection loop, the integrated LED will activate the alarm to notify administrators.

Specifications

Communications

- Standard** IEEE 802.3, 802.3u, 802.3x, 802.1p, 802.3az, 802.3ab
- LAN** 10/100/1000Base-T(X)
- Transmission Distance** Up to 100 m
- Transmission Speed** Up to 1000 Mbps

Interface

- Connectors** 8 x RJ45 (EKI-3728) or 5 x RJ45 (EKI-3725)
6-pin removable screw terminal (power & relay)
- LED Indicators** P1, P2, P-Fail, Loop detection
10/100T (X): Link/Activity, Speed

Switch Properties

- MAC Table Size** 2K (EKI-3725)
8K (EKI-3728)
- Packet Buffer Size** 1M bit
- Switch Fabric Speed** 10Gbps (EKI-3725)
16Gbps (EKI-3728)
- Jumbo Frame** 9,216 byte

Power

- Power Consumption** EKI-3725: Max. 2.7 W
EKI-3728: Max. 4.5W
- Power Input** 12 ~ 48 V_{DC}, redundant dual inputs
- Fault Output** 1 Relay Output

Mechanism

- Dimensions (W x H x D)** 28.5 x 120 x 85.3 mm (1.02" x 4.73" x 3.35") - EKI-3725
44.5 x 120 x 85.3 mm (1.75" x 4.73" x 3.35") - EKI-3728
- Enclosure** IP40, plastic and metal shell with solid mounting kits
- Mounting** DIN-rail, Wall

Protection

- Reverse Polarity** Present
- Overload current** Present

Environment

- Operating Temperature** -10 ~ 60°C (14 ~ 140°F)
- Storage Temperature** -40 ~ 85°C (-40 ~ 185°F)
- Operating Humidity** 5 ~ 95% (non-condensing)
- Storage Humidity** 0 ~ 95% (non-condensing)
- MTBF** 1,478,582 hours (EKI-3728)
1,545,555 hours (EKI-3725)

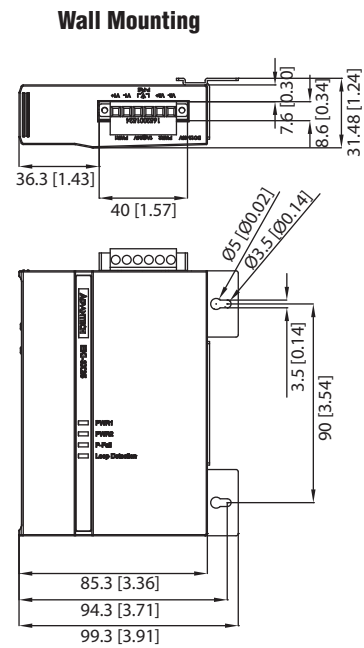
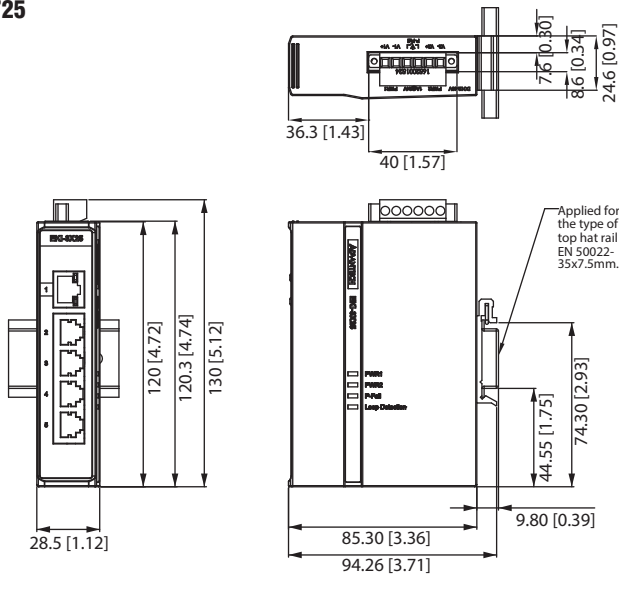
Certification

- Safety** UL 60950-1, CAN/CSA-C22.2 No.60950
- EMI** FCC Part 15 Subpart B Class A, EN 55011/55022 Class A
- EMS** EN 61000-4-2 (Level 3)
EN 61000-4-3 (Level 3)
EN 61000-4-4 (Level 4)
EN 61000-4-5 (Level 3)
EN 61000-4-6 (Level 3)
EN 61000-4-8 (Level 4)
- Shock** IEC 60068-2-27
- Freefall** IEC 60068-2-32
- Vibration** IEC 60068-2-6

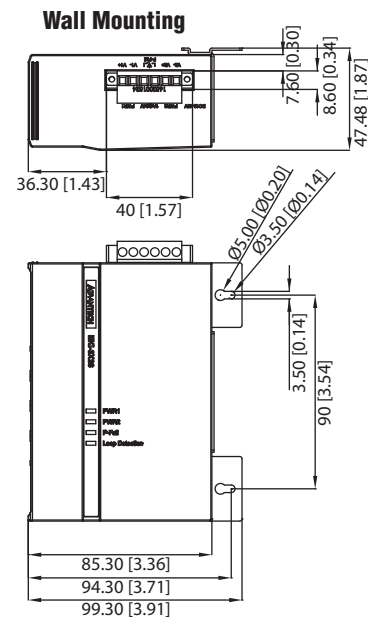
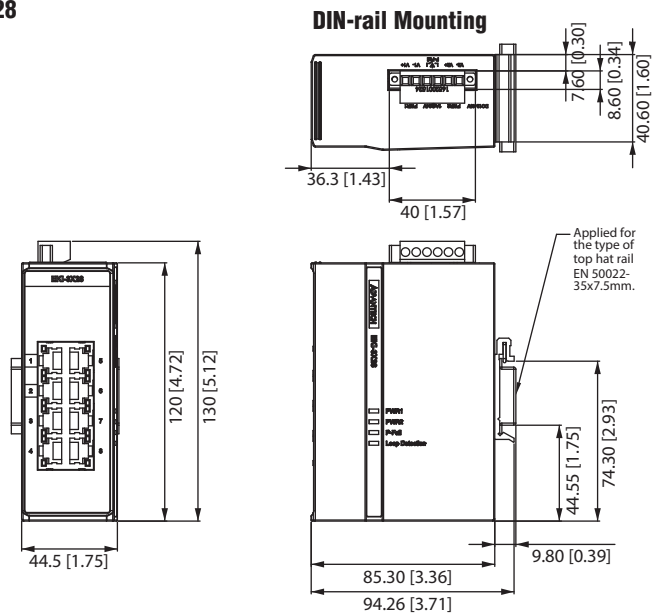
Dimensions

Unit: mm [inch]

EKI-3725



EKI-3728



Ordering Information

- **EKI-3725** 5-port Gigabit Unmanaged Industrial Ethernet Switch
- **EKI-3728** 8-port Gigabit Unmanaged Industrial Ethernet Switch