



Chipsmall Limited consists of a professional team with an average of over 10 year of expertise in the distribution of electronic components. Based in Hongkong, we have already established firm and mutual-benefit business relationships with customers from,Europe,America and south Asia,supplying obsolete and hard-to-find components to meet their specific needs.

With the principle of “Quality Parts,Customers Priority,Honest Operation,and Considerate Service”,our business mainly focus on the distribution of electronic components. Line cards we deal with include Microchip,ALPS,ROHM,Xilinx,Pulse,ON,Everlight and Freescale. Main products comprise IC,Modules,Potentiometer,IC Socket,Relay,Connector.Our parts cover such applications as commercial,industrial, and automotives areas.

We are looking forward to setting up business relationship with you and hope to provide you with the best service and solution. Let us make a better world for our industry!



## Contact us

Tel: +86-755-8981 8866 Fax: +86-755-8427 6832

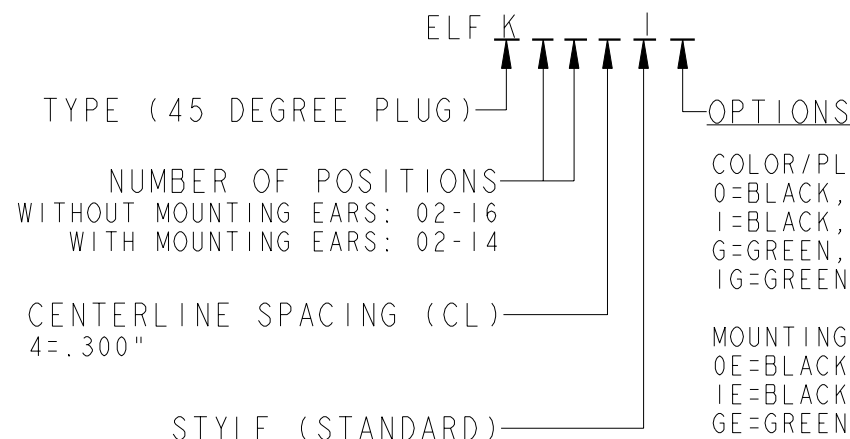
Email & Skype: [info@chipsmall.com](mailto:info@chipsmall.com) Web: [www.chipsmall.com](http://www.chipsmall.com)

Address: A1208, Overseas Decoration Building, #122 Zhenhua RD., Futian, Shenzhen, China



REV	ECN	APP'D
-	5137	

# ELFK SERIES PART NUMBERING SCHEME



COLOR/PLATING  
 0=BLACK, TIN-LEAD (STANDARD)  
 1=BLACK, SELECTIVE GOLD  
 G=GREEN, TIN-LEAD  
 IG=GREEN, SELECTIVE GOLD

MOUNTING EARS  
 0E=BLACK, TIN-LEAD  
 1E=BLACK, SELECTIVE GOLD  
 GE=GREEN, TIN-LEAD  
 EG=GREEN, SELECTIVE GOLD

CONSULT PCD FOR PART NO. AND  
 AVAILABILITY OF FOLLOWING OPTIONS:  
 \*CUSTOM COLORS  
 \*CUSTOM MARKING  
 \*CUSTOM KEYING  
 \*SELECTIVE CONTACT LOADING

**RU RATINGS**

CURRENT - 15A  
 VOLTAGE - 300V  
 U.L. FILE NO. PENDING

**SP RATINGS**

CURRENT - 15 A  
 VOLTAGE - 450 V  
 CSA FILE NO. PENDING



DIN VDE 0627:1986  
 DIN VDE 0110-1:1989  
 EN 60947-1:1991  
 EN 60947-7-1:1992

CURRENT - 15 A  
 VOLTAGE - 450 V  
 TUV FILE NO. PENDING

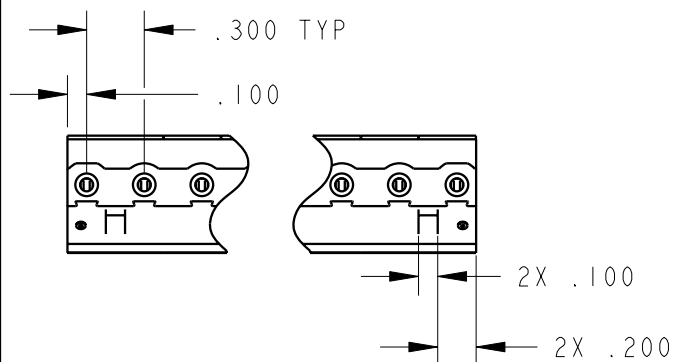
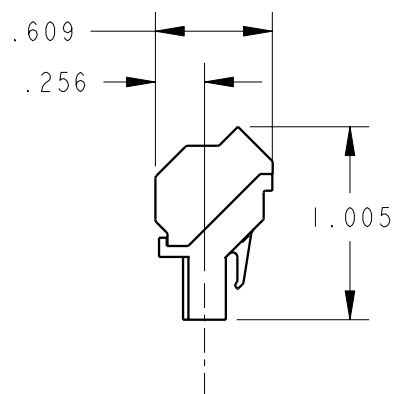
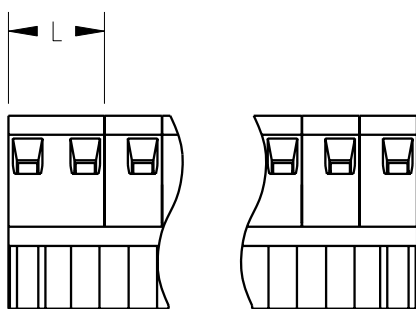
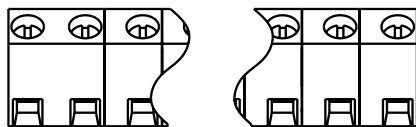
INSTALLATION RECOMMENDATIONS:  
 WIRE RANGE: AWG #12-26, STRANDED OR SOLID  
 WIRE STRIP LENGTH: .310"  
 TIGHTENING TORQUE: 7 LB-IN.

MATERIALS:  
 HOUSING: PPO, UL 94 V-0  
 CONTACT: COPPER ALLOY, OPTIONAL FINISH  
 SCREW: STEEL, NICKEL FINISH  
 WIRE CLAMP: COPPER ALLOY, NICKEL FINISH

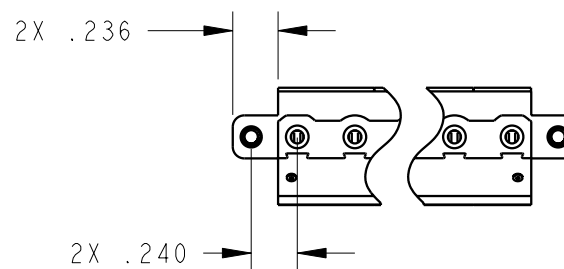
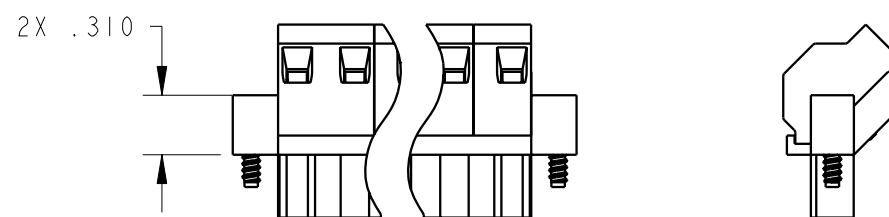
MAX OPERATING TEMPERATURE:  
 105°C

<div>DIMENSIONS</div> <div>ANSI Y14.5M</div> <div>UNITS: INCHES</div> <div>Pro/E FILE</div>	<div>TOLERANCES</div> <div>.XX ±0.01</div> <div>.XXX ±0.005</div> <div>ANGLES ±2.0°</div>	<div>PROJECTION</div> <div></div>	<div>SPECIFICATION DRAWING</div> <div>ENGR</div> <div>I. QUINN 12/27/02</div>		<div></div>	<div>TITLE</div> <div>ELFK SERIES</div> <div>45 DEGREE PLUG</div> <div>.300 PITCH</div>		
<div>ORIGINAL STAMPED IN RED</div>	<div>THIS DOCUMENT CONTAINS PROPRIETARY INFORMATION WHICH IS THE CONFIDENTIAL PROPERTY OF PCD, INC. PEABODY, MA, USA</div>		<div>CHKD</div>		<div>SIZE</div> <div>A</div>	<div>DWG NO.</div> <div>ELFK02410</div>		<div>REV</div> <div>-</div>
			<div>APPD</div>		<div>CODE: 58982</div>		<div>SCALE: NONE</div>	<div>SHEET 1 OF 2</div>

$$L = (\text{NUM OF POS} \times .300) - .1$$



MOUNTING EAR  
CONFIGURATION



SIZE <b>A</b>	DWG NO. <b>ELFK02410</b>	REV <b>-</b>
CODE: 58982	SCALE: NONE	SHEET 2 OF 2