



Chipsmall Limited consists of a professional team with an average of over 10 year of expertise in the distribution of electronic components. Based in Hongkong, we have already established firm and mutual-benefit business relationships with customers from,Europe,America and south Asia,supplying obsolete and hard-to-find components to meet their specific needs.

With the principle of “Quality Parts,Customers Priority,Honest Operation,and Considerate Service”,our business mainly focus on the distribution of electronic components. Line cards we deal with include Microchip,ALPS,ROHM,Xilinx,Pulse,ON,Everlight and Freescale. Main products comprise IC,Modules,Potentiometer,IC Socket,Relay,Connector.Our parts cover such applications as commercial,industrial, and automotives areas.

We are looking forward to setting up business relationship with you and hope to provide you with the best service and solution. Let us make a better world for our industry!



Contact us

Tel: +86-755-8981 8866 Fax: +86-755-8427 6832

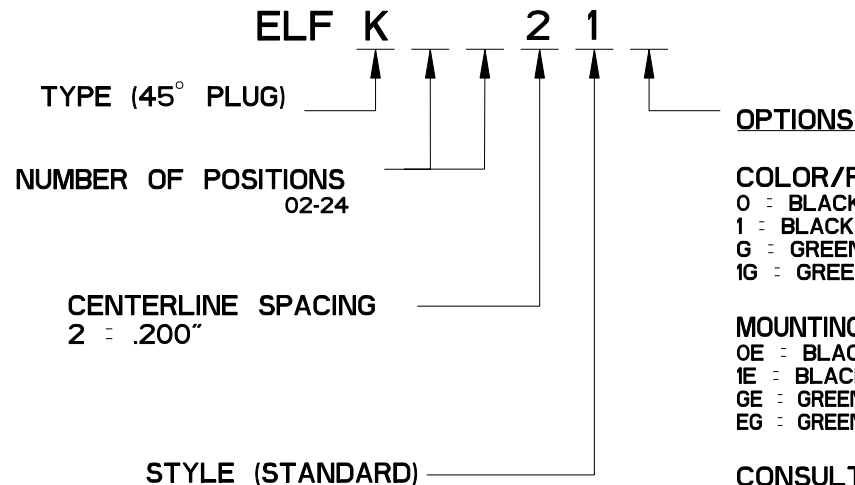
Email & Skype: info@chipsmall.com Web: www.chipsmall.com

Address: A1208, Overseas Decoration Building, #122 Zhenhua RD., Futian, Shenzhen, China



REV	ECN	APP'D
-	3600	JEC 12/11/98
A	4686	IQ 1/2/02
B	5137	

ELFK SERIES PART NUMBERING SCHEME



COLOR/PLATING
 0 : BLACK, TIN-LEAD (STANDARD)
 1 : BLACK, SELECTIVE GOLD
 G : GREEN, TIN-LEAD
 1G : GREEN, SEL. GOLD

MOUNTING EARS
 OE : BLACK, TIN-LEAD
 IE : BLACK, SEL. GOLD
 GE : GREEN, TIN-LEAD
 EG : GREEN, SEL. GOLD

CONSULT PCD FOR PART NO. AND AVAILABILITY OF FOLLOWING OPTIONS:

- * CUSTOM COLORS
- * CUSTOM MARKING
- * CUSTOM KEYING
- * SELECTIVE CONTACT LOADING



RATINGS

CURRENT - 15A
 VOLTAGE - 300V
 U.L. FILE NO. E83421



RATINGS

CURRENT - PENDING
 VOLTAGE - PENDING
 CSA FILE NO. LR69703



DIN VDE 0627:1986
 DIN VDE 0110-1:1989
 EN 60947-1:1991
 EN 60947-7-1:1992

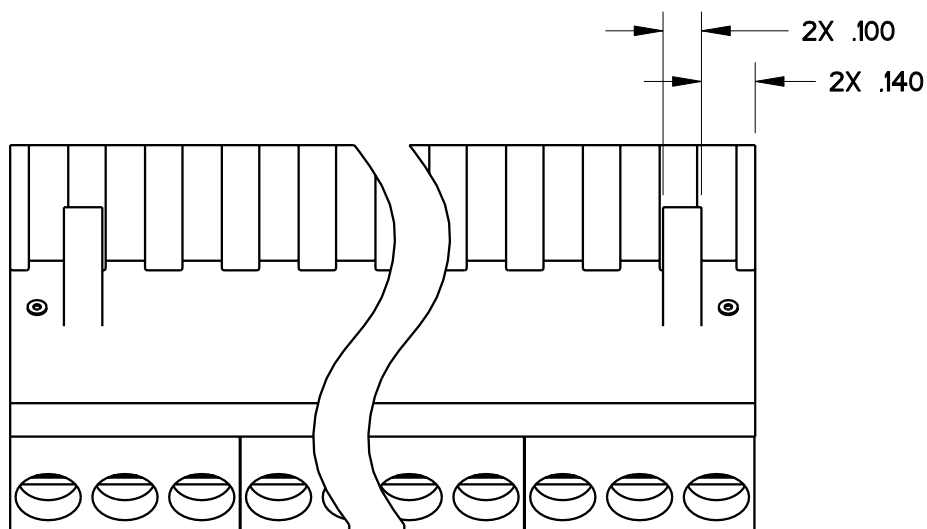
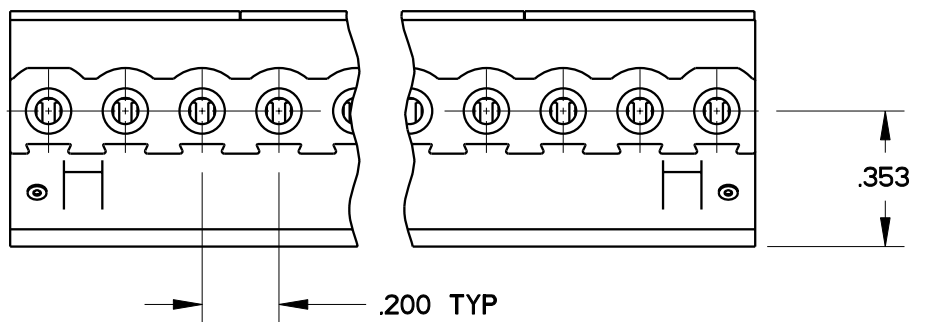
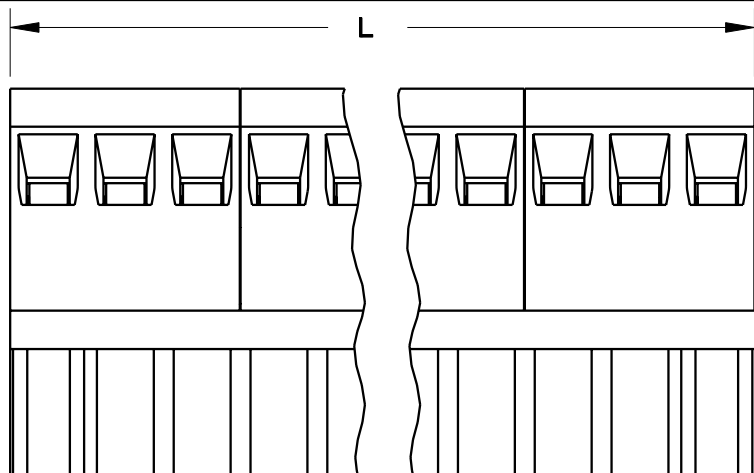
CURRENT - PENDING
 VOLTAGE - PENDING
 TUV FILE NO. 20396

INSTALLATION RECOMMENDATIONS
 WIRE RANGE: AWG #14-26, STRANDED
 OR SOLID; AWG #12 STRANDED
 WIRE STRIP LENGTH: .310"
 TIGHTENING TORQUE: 7 LB-IN.

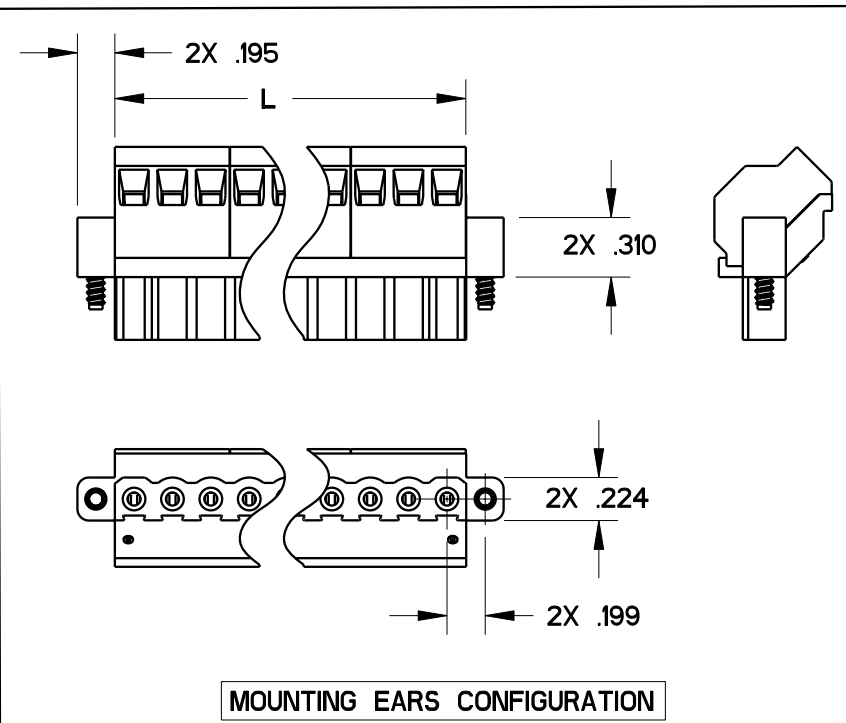
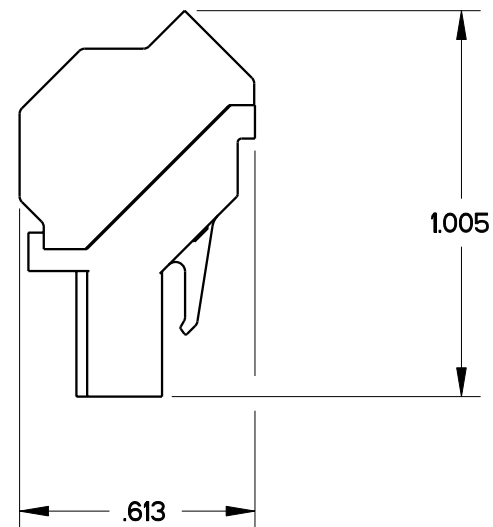
MATERIALS:
 HOUSING: PPO, UL 94 V-0
 CONTACT: COPPER ALLOY, NICKEL FINISH
 SCREW: STEEL, NICKEL FINISH
 WIRE CLAMP: COPPER ALLOY, NICKEL FINISH

MAX OPERATING TEMPERATURE:
 105°C

<div>DIMENSIONS</div> <div>ANSI Y14.5M</div> <div>UNITS: INCHES</div> <div>Pro/E FILE</div>	<div>TOLERANCES</div> <div>.XX ±0.01</div> <div>.XXX ±0.005</div> <div>ANGLES ±2.0°</div>	<div>PROJECTION</div> <div></div>	<div>SPECIFICATION DRAWING</div> <div>ENGR</div> <div>D. MANTER 10-Dec-98</div>		<div></div>	<div>TITLE</div> <div>ELFK SERIES</div> <div>PLUG ASSEMBLY</div> <div>45°</div>			
<div>ORIGINAL STAMPED</div> <div>IN RED</div>	<div>THIS DOCUMENT CONTAINS</div> <div>PROPRIETARY INFORMATION WHICH</div> <div>IS THE CONFIDENTIAL PROPERTY</div> <div>OF PCD, INC. PEABODY, MA, USA</div>		<div>CHKD</div>	<div>SIZE</div> <div>A</div>		<div>DWG NO.</div> <div>ELFK02210</div>		<div>REV</div> <div>B</div>	
			<div>APPD</div> <div>J. CAHALY 12/11/98</div>	<div>CODE: 58982</div>		<div>SCALE: NONE</div>	<div>SHEET 1 OF 2</div>		



L=NUM OF POS X CL SPACING



MOUNTING EARS CONFIGURATION

SIZE

A

DWG NO.

ELFK02210

REV

B

CODE: 58982

SCALE: NONE

SHEET 2 OF 2