



Chipsmall Limited consists of a professional team with an average of over 10 year of expertise in the distribution of electronic components. Based in Hongkong, we have already established firm and mutual-benefit business relationships with customers from,Europe,America and south Asia,supplying obsolete and hard-to-find components to meet their specific needs.

With the principle of “Quality Parts,Customers Priority,Honest Operation,and Considerate Service”,our business mainly focus on the distribution of electronic components. Line cards we deal with include Microchip,ALPS,ROHM,Xilinx,Pulse,ON,Everlight and Freescale. Main products comprise IC,Modules,Potentiometer,IC Socket,Relay,Connector.Our parts cover such applications as commercial,industrial, and automotives areas.

We are looking forward to setting up business relationship with you and hope to provide you with the best service and solution. Let us make a better world for our industry!



Contact us

Tel: +86-755-8981 8866 Fax: +86-755-8427 6832

Email & Skype: info@chipsmall.com Web: www.chipsmall.com

Address: A1208, Overseas Decoration Building, #122 Zhenhua RD., Futian, Shenzhen, China



NEW

LR composite device

Japan

Type: **WRF**



LR composite device with Inductor and Resistor function in 1005 package, ideal for bus line noise suppression circuits and ESD.

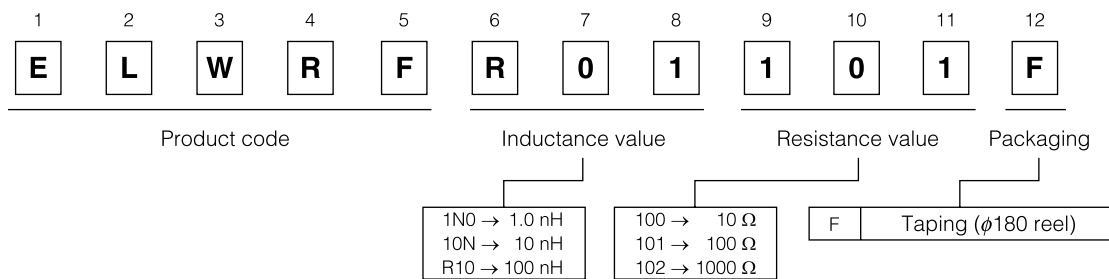
■ Features

- Effective for noise and ESD at the same time
- Simple pattern without connecting GND pattern

■ Recommended Applications

- Information/communication devices with LCD displays

■ Explanation of Part Numbers



■ Standard Packing Quantity

- 10000 pcs./Reel

■ Standard Parts : WRF Type

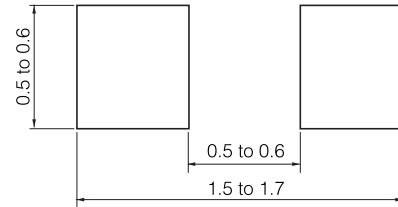
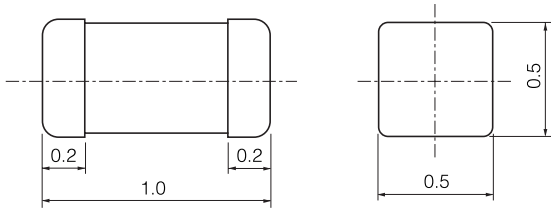
| Part Number | Inductance | | | DC Resistance | | Self Resonant Freq. (MHz) min. | DC Current (mA) max. |
|-------------|------------|-----------|------------|----------------|-----------|-----------------------------------|-------------------------|
| | (nH) | Tolerance | Test Freq. | Resistance (Ω) | Tolerance | | |
| ELWRFR1010F | 100 | ± 5 % | 100 MHz | 100 | ± 20 % | 1200 | 23 |

* Range for design L : to100 nH
 R : 5 to 14 Ω (at 10 nH), 70 to 200 Ω (at 100 nH)

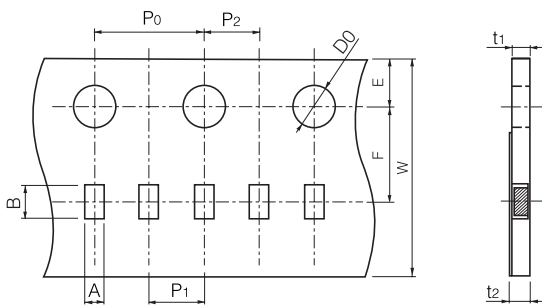
■ Dimensions in mm (not to scale)

● 1005 (0402) WRF Type

● Recommended Land Pattern in mm (not to scale)

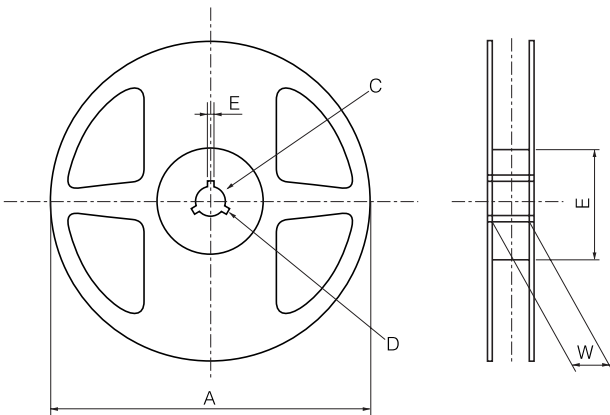


■ Paper Tape Dimensions in mm (not to scale)



| Dimensions | A | B | W | F | E | P ₁ |
|------------|----------------|----------------|----------------|----------------|----------------|----------------|
| Size | 0.65±0.10 | 1.15±0.10 | 8.00±0.30 | 3.50±0.05 | 1.75±0.10 | 2.00±0.05 |
| Dimensions | P ₂ | P ₀ | D ₀ | t ₁ | t ₂ | |
| Size | 2.00±0.05 | 4.00±0.10 | 1.55±0.05 | 0.70 max. | 1.00 max. | |

■ Reel Dimensions in mm (not to scale)



| Dimensions | A | B | C | D | E | W |
|------------|-----------|----------|----------|----------|---------|---------|
| Size | 178.0±2.0 | 60.0±0.5 | 13.0±0.5 | 21.0±0.8 | 2.0±0.5 | 9.0±0.3 |