



Chipsmall Limited consists of a professional team with an average of over 10 year of expertise in the distribution of electronic components. Based in Hongkong, we have already established firm and mutual-benefit business relationships with customers from,Europe,America and south Asia,supplying obsolete and hard-to-find components to meet their specific needs.

With the principle of "Quality Parts,Customers Priority,Honest Operation,and Considerate Service",our business mainly focus on the distribution of electronic components. Line cards we deal with include Microchip,ALPS,ROHM,Xilinx,Pulse,ON,Everlight and Freescale. Main products comprise IC,Modules,Potentiometer,IC Socket,Relay,Connector.Our parts cover such applications as commercial,industrial, and automotives areas.

We are looking forward to setting up business relationship with you and hope to provide you with the best service and solution. Let us make a better world for our industry!



Contact us

Tel: +86-755-8981 8866 Fax: +86-755-8427 6832

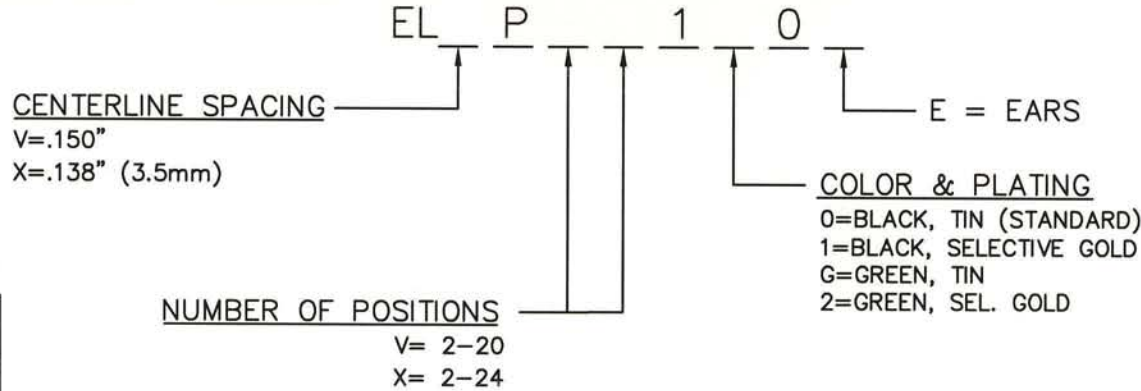
Email & Skype: info@chipsmall.com Web: www.chipsmall.com

Address: A1208, Overseas Decoration Building, #122 Zhenhua RD., Futian, Shenzhen, China



ELV/XP SERIES PART NUMBERING SCHEME

REV	ECN	APPD
-	3624	JEC 1/18/99
A	3865	JEC 11/9/99
B	4661	IQ 11/26/01
C	5742	2/12/28/05



RU
RATINGS

CURRENT - 12A
VOLTAGE - 300V
U.L. FILE NO. E83421

SP
RATINGS

CURRENT - 12A
VOLTAGE - 300V
CSA FILE NO. LR69703

DIN VDE 0627:1986
DIN VDE 0110-1:1989
EN 60947-1:1991
EN 60947-7-1:1992

CURRENT - 12A
VOLTAGE - 300 V
TUV FILE NO. 20396

INSTALLATION RECOMMENDATIONS:
WIRE RANGE: AWG #16-28, STRANDED OR SOLID
WIRE STRIP LENGTH: .250"
TIGHTENING TORQUE: 2.2 LB-IN.

MATERIALS:
HOUSING: PA 4/6, UL 94 V-0
CONTACT: COPPER ALLOY, OPTIONAL FINISH
SCREW: COPPER ALLOY, NICKEL FINISH
WIRE CLAMP: COPPER ALLOY, NICKEL FINISH

MAX OPERATING TEMPERATURE:
125°C

CONSULT PCD FOR PART NO. AND AVAILABILITY OF FOLLOWING OPTIONS:
* CUSTOM COLORS
* CUSTOM MARKING
* CUSTOM KEYING
* SELECTIVE CONTACT LOADING

DIMENSIONS
ANSI Y14.5M
UNITS: INCHES
ACAD FILE

TOLERANCES
.XX ±.01
.XXX ±.005
ANGLES ±2°

PROJECTION

Amphenol Pcd
SPECIFICATION DRAWING

ENGR
I. QUINN 12/21/99

TITLE

ELV/ELX SERIES
PLUGGABLE TERMINAL
BLOCK, RIGHT ANGLE

ORIGINAL
STAMPED
IN RED

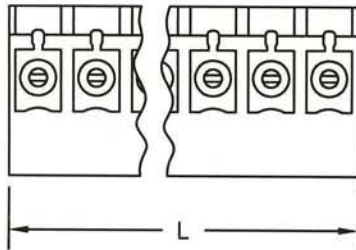
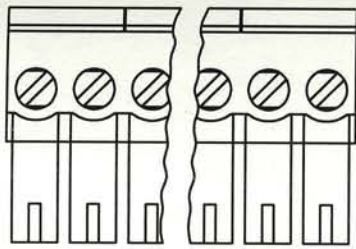
*THIS DOCUMENT CONTAINS
PROPRIETARY INFORMATION WHICH
IS THE CONFIDENTIAL PROPERTY
OF AMPHENOL PCD INC. PEABODY, MA*

CHKD
J. CAHALY 1/18/99

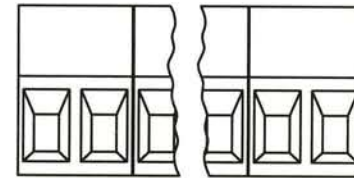
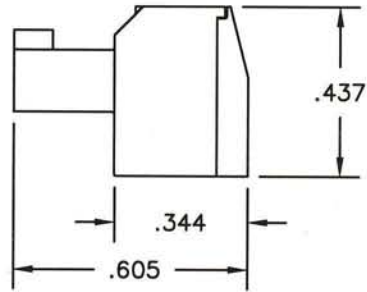
APPD
J. CAHALY 1/18/99

SIZE	DWG NO.	REV
A	ELVP02100	C
CODE: 58982	SCALE: NONE	SHEET 1 OF 2

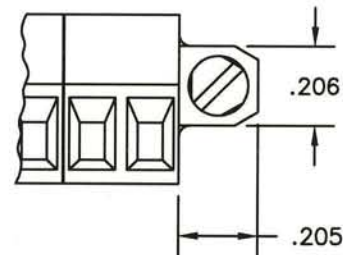
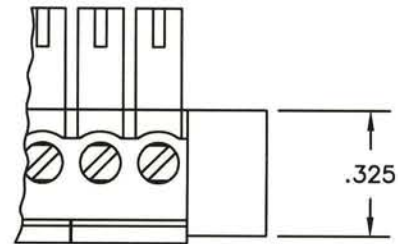
STANDARD R/A PLUG



L=NUM OF POS X CL SPACING



MOUNTING EAR CONFIGURATION



SIZE

DWG NO.

DOC REV

A

ELVP02100

C

CODE: 58982

SCALE: NONE

SHEET 2 OF 2