



Chipsmall Limited consists of a professional team with an average of over 10 year of expertise in the distribution of electronic components. Based in Hongkong, we have already established firm and mutual-benefit business relationships with customers from,Europe,America and south Asia,supplying obsolete and hard-to-find components to meet their specific needs.

With the principle of “Quality Parts,Customers Priority,Honest Operation,and Considerate Service”,our business mainly focus on the distribution of electronic components. Line cards we deal with include Microchip,ALPS,ROHM,Xilinx,Pulse,ON,Everlight and Freescale. Main products comprise IC,Modules,Potentiometer,IC Socket,Relay,Connector.Our parts cover such applications as commercial,industrial, and automotives areas.

We are looking forward to setting up business relationship with you and hope to provide you with the best service and solution. Let us make a better world for our industry!



Contact us

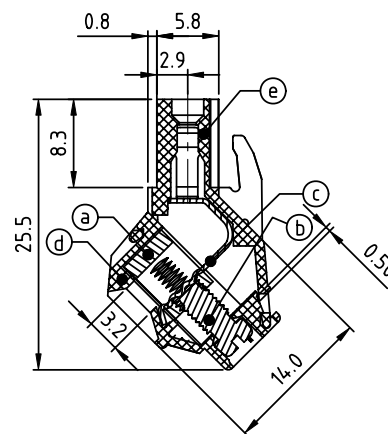
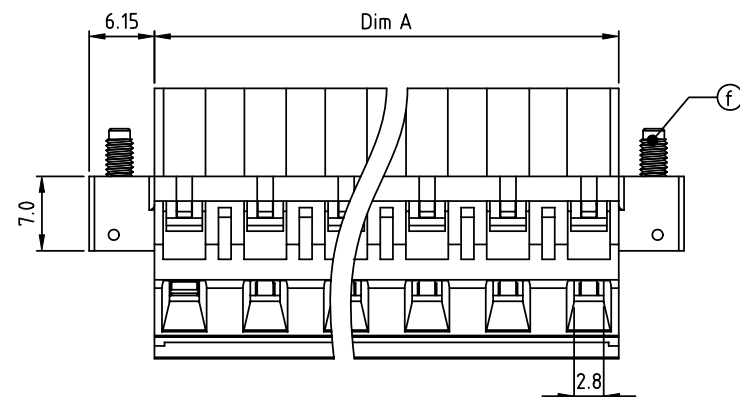
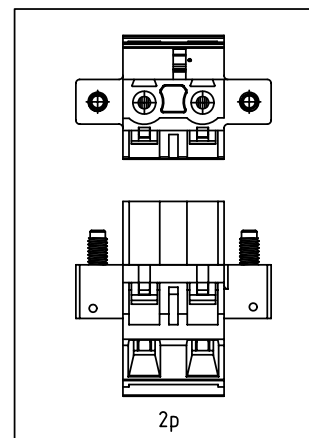
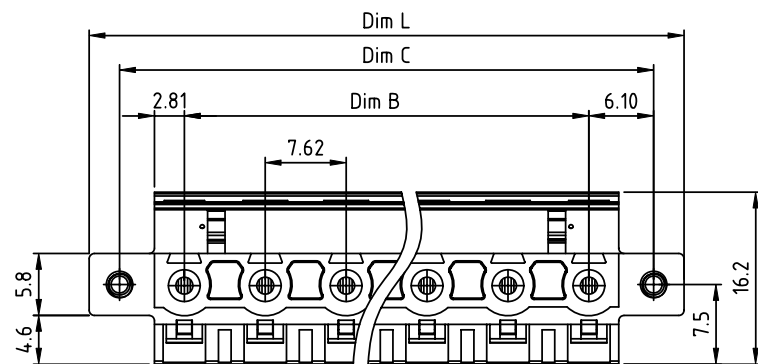
Tel: +86-755-8981 8866 Fax: +86-755-8427 6832

Email & Skype: info@chipsmall.com Web: www.chipsmall.com

Address: A1208, Overseas Decoration Building, #122 Zhenhua RD., Futian, Shenzhen, China



PRODUCT NUMBER	PITCH
EMxx01x200J0G	7.62 mm



Material:

- Item (a) Clamp: Brass(CuZn) Ni plated
- Item (b) Terminal screw: Steel Zinc plating "-" slot type
- Item (c) Female contact: High conductivity copper ,Tin plated
- Item (d) Terminal (top body): Thermoplastic (UL94V-0)
- Item (e) Terminal (bottom body): Thermoplastic (UL94V-0)
- Item (f) Flange screw: Steel Zinc plating "+/-" combination type

Electrical cULus

- Voltage rating: 300VAC
- Current rating: 20A
- Wire range:
- Solid wire(AWG): 12-22
- Stranded wire(AWG): 12-22
- Torque: 4 Lb-In
- Screw: M3
- Wire strip length: 7-8mm
- Withstanding Voltage: 1.6KV
- Operating temperature: -40°C to +115°C
- Safety Approval: cULus

Dim L=(N-1)×7.62+17.92
 Dim A=(N-1)×7.62+5.62
 Dim B=(N-1)×7.62
 Dim C=(N-1)×7.62+12.20
 N=Number of poles

POLES	Tolerance
2p-6p	±0.20
7p-12p	±0.30
13p-16p	±0.40

PART NO.: EM xx 01 x 2 00J0 G

Solid block	No. of poles	Color	RoHS compliant (lead<4%) In copper Alloy
0	2	Black (RAL9005)	
02	2 poles	Red (RAL3001/D)	
03	3 poles	Orange(RAL2011/P)	
4	3 poles	Yellow(RAL1018/A)	
5	...	Green(RAL6018/T)	
6	16 poles	Blue (RAL5015/A)	
8		Grey(RAL7035/D)	
9		White(RAL1102)	
C		Green(RAL6018/U)	

mat'l. code				surface	tolerance	projection	product family		
litr ecn no dr date				ASME Y14.5	ASME Y14.5		TERMINAL BLOCK		
				tolerances unless otherwise specified		MM	title		
				angles	X.±0.5		TERMINAL BLOCK		
				flat	X.X±0.3		PLUGGABLE PLUG, WITH FLANGE		
				X°±1°	X.XX±0.1	scale	dwg no		
				dr	EVIN ZHONG	042114	sheet 1 of 1		size
				enr	EVIN ZHONG	042114	EMxx01x200J0G		A4
				chr	HANKE FENG	042114	type		
				appd	SHI JUN	042114			
sheet index	revision	A	1				CUSTOMER Drawing		