



Chipsmall Limited consists of a professional team with an average of over 10 year of expertise in the distribution of electronic components. Based in Hongkong, we have already established firm and mutual-benefit business relationships with customers from,Europe,America and south Asia,supplying obsolete and hard-to-find components to meet their specific needs.

With the principle of “Quality Parts,Customers Priority,Honest Operation,and Considerate Service”,our business mainly focus on the distribution of electronic components. Line cards we deal with include Microchip,ALPS,ROHM,Xilinx,Pulse,ON,Everlight and Freescale. Main products comprise IC,Modules,Potentiometer,IC Socket,Relay,Connector.Our parts cover such applications as commercial,industrial, and automotives areas.

We are looking forward to setting up business relationship with you and hope to provide you with the best service and solution. Let us make a better world for our industry!



Contact us

Tel: +86-755-8981 8866 Fax: +86-755-8427 6832

Email & Skype: info@chipsmall.com Web: www.chipsmall.com

Address: A1208, Overseas Decoration Building, #122 Zhenhua RD., Futian, Shenzhen, China



EM5035 Series**EuroMag Terminal Blocks**

Pluggable Block, Stackable

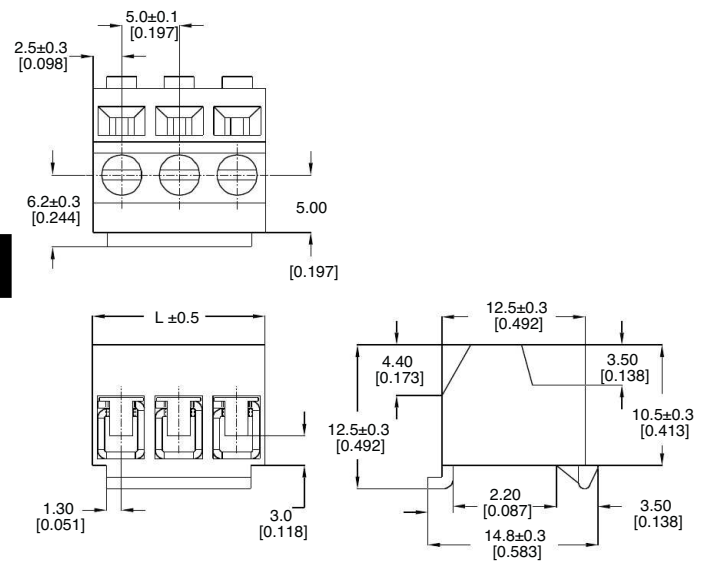
(Mates with EM5045 Series) 5.00 Centers

SPECIFICATIONS**Rating:** 10A, 300V**Center Spacing:** 0.197" (5.00mm)**Wire Range:** #16-24 AWG**Housing Material:** Black UL 94V0 Thermoplastic**Contact Material:** Tin-Plated Brass**Wire Protector:** Phosphor Bronze, Tin-Plated**Screw Size:** M2.6 Chromatized Steel**Operating Temperature:** 105°C (221°F) max., -40°C (-40°F) min.**Torque Rating:** 3.0 lb-in.**Construction:** Modular design features dovetails for interlocking to achieve longer lengths**Agency Information:**  File E62622; CE Certified

EM503503

EM503502

Shown with EM5045series header - order separately

Dimensions - mm (in)

Poles	L (mm)	Poles	L (mm)
2	10.0	14	70.0
3	15.0	15	75.0
4	20.0	16	80.0
5	25.0	17	85.0
6	30.0	18	90.0
7	35.0	19	95.0
8	40.0	20	100.0
9	45.0	21	105.0
10	50.0	22	110.0
11	55.0	23	115.0
12	60.0	24	120.0
13	65.0		

To convert to inches, divide by 25.4

Part Numbering System

Series

of Poles

Mating Header: EM5045 pg. 106

EM5035

02 to 24

Terminal Blocks:
Single RowEuroMag Series
Plug & HeaderEdge Connectors,
One-Sided BoardsCompliance
References