



Chipsmall Limited consists of a professional team with an average of over 10 year of expertise in the distribution of electronic components. Based in Hongkong, we have already established firm and mutual-benefit business relationships with customers from,Europe,America and south Asia,supplying obsolete and hard-to-find components to meet their specific needs.

With the principle of “Quality Parts,Customers Priority,Honest Operation,and Considerate Service”,our business mainly focus on the distribution of electronic components. Line cards we deal with include Microchip,ALPS,ROHM,Xilinx,Pulse,ON,Everlight and Freescale. Main products comprise IC,Modules,Potentiometer,IC Socket,Relay,Connector.Our parts cover such applications as commercial,industrial, and automotives areas.

We are looking forward to setting up business relationship with you and hope to provide you with the best service and solution. Let us make a better world for our industry!



## Contact us

Tel: +86-755-8981 8866 Fax: +86-755-8427 6832

Email & Skype: info@chipsmall.com Web: www.chipsmall.com

Address: A1208, Overseas Decoration Building, #122 Zhenhua RD., Futian, Shenzhen, China



# PART NUMBERING CONSTRUCTION

## EM7127XX

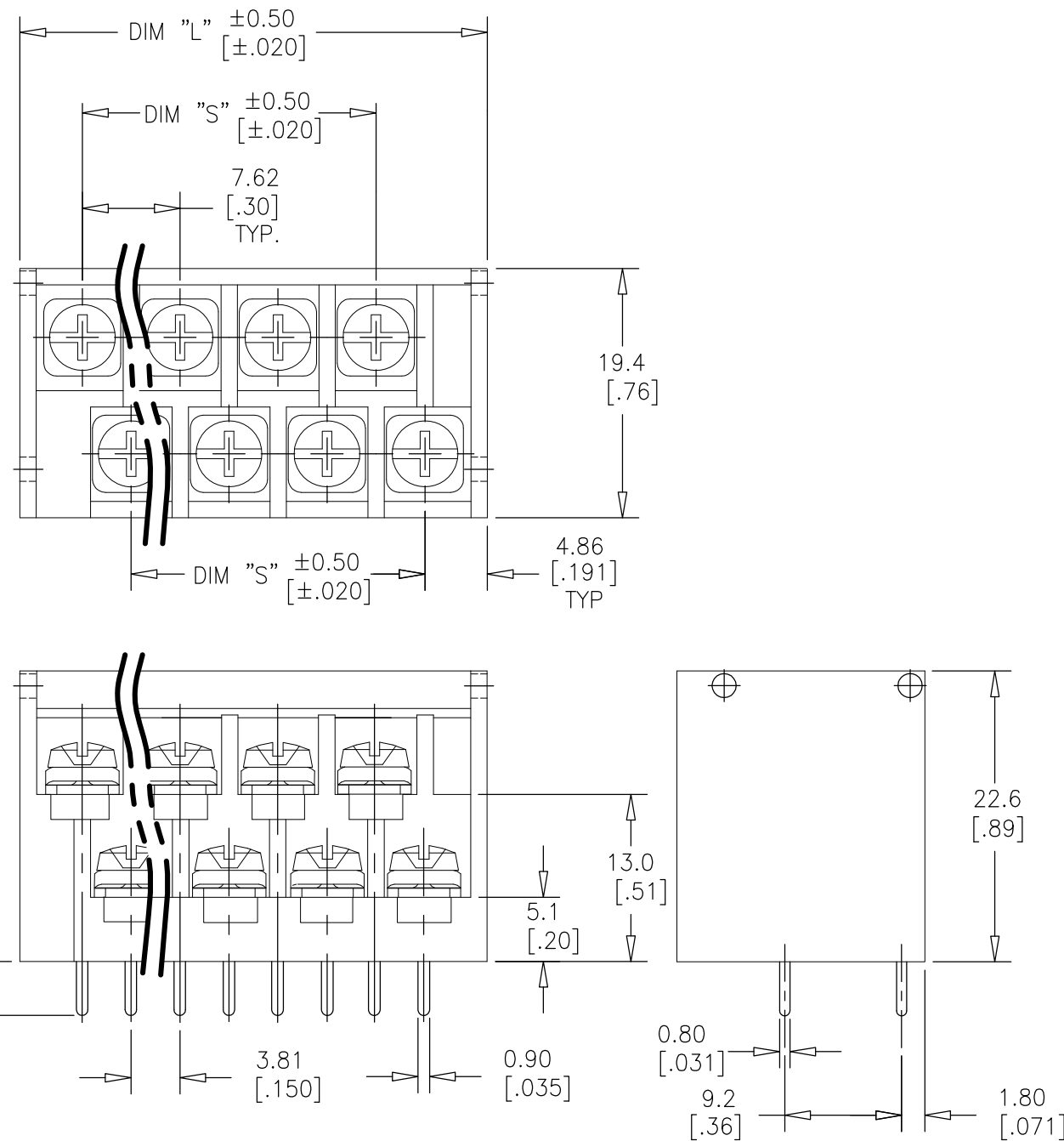
NO. OF POLES (PER ROW)  
2 THRU 16

### SPECIFICATIONS:

RATING: 15A, 300V  
 CENTER SPACING: 3.81/[.150]  
 WIRE SIZE: #16-22AWG  
 HOUSING MATERIAL: P.B.T.(UL94V-0)  
 CONTACT MATERIAL: BRASS, TIN PLATED  
 SCREW SIZE: M 3X0 NICKEL PLATED STEEL  
 RECOMMENDED PCB HOLE DIAMETERS: 1.33/[.052]  
 AGENCY APPROVALS: PENDING

TABLE A

PART NO.	# POS.	DIM. "L"	DIM. "S"
EM712703	3	28.8/[1.13]	15.2/[.59]
EM712704	4	36.4/[1.43]	22.9/[.90]
EM712705	5	44.0/[1.73]	30.5/[1.20]
EM712706	6	51.6/[2.03]	38.1/[1.50]
EM712708	8	66.9/[2.63]	53.3/[2.10]
EM712709	9	74.5/[2.93]	61.0/[2.40]
EM712710	10	82.1/[3.23]	68.6/[2.70]
EM712711	11	89.7/[3.53]	76.2/[3.00]
EM712712	12	97.4/[3.83]	83.8/[3.30]
EM712713	13	105.0/[4.13]	91.4/[3.60]
EM712714	14	112.6/[4.43]	99.1/[3.90]
EM712715	15	120.2/[4.73]	106.7/[4.20]
EM712716	16	127.8/[5.03]	114.3/[4.50]



PART NO. <b>EM7127XX-SALES</b>		PLANT DISTRIBUTION CODE <b>56 U</b>	
REV #	REVISIONS	DATE	APPR.
0	RELEASED TO SALES ECN #D7564 RF	11-20 1998	
1	(D5) ADDED "(PER ROW)" TO NO. OF POLES; DELETED COVER OPTION (B4) ADDED COVER (A1) TITLE WAS EM7127XX-SERIES EURO- STYLE TERMINAL BLOCKS. DWG EM7127XX-SALES WAS EM7127-XX-(XX)- SALES. ECN D8011 UF	5-25 2000	
2	UPDATED BORDER TO INCLUDE PLANT CODE ECN E0829 PC	4-10 2002	
A	CONTROL TRANSFERRED TO DIVISION FROM CBC * UPDATED TITLEBLOCK * ECN-SB03173 JG	6-12 2003	
B	REMOVED EM712702 & EM712707 ECN-SB06137 BAM	9-5 2006	

TOLERANCES UNLESS OTHERWISE SPECIFIED			THIRD ANGLE PROJECTION	DESIGN UNITS Metric/English
METRIC 1 PL DEC.=±0.25 2 PL DEC.=±0.13	ENGLISH 2 PL DEC.=±.01 3 PL DEC.=±.005	FRACTIONAL TOL ±1/64 IN ANGULAR TOL= ±1' ANGULAR TOL 1PL=±0.5'		CREATED USING AUTOCAD

COPYRIGHT — Cooper Industries, Inc.  
 This is an unpublished work. The disclosure of this work is limited to a select personnel. Further dissemination or disclosure to the public is PROHIBITED. This unpublished work is protected by Federal Copyright Law and all rights thereunder are reserved by Cooper Industries, Inc.

CONFIDENTIAL —  
 The information contained in this document is the property of Cooper Industries, Inc. It is not for public disclosure. Possession of the information does not convey any right to loan, sell or disclose the information. Unauthorized reproduction or use of the information is PROHIBITED. This document is to be returned to Cooper Industries, Inc. upon completion of the purpose for which it is loaned or upon request.

MATERIAL		DRAWN BY RF	
FINISH		DATE 11/20/98	
 St. Louis, MO 63178		C/F NO. 70710	SCALE 2:1

TITLE  
**.300" CNETERS DUAL LEVEL PCB BARRIER TERMINAL BLOCKS WITH COVER**

PART NO. <b>EM7127XX-SALES</b>	SHT 1 OF 1	SIZE: <b>B</b>
-----------------------------------	------------	-------------------