



Chipsmall Limited consists of a professional team with an average of over 10 year of expertise in the distribution of electronic components. Based in Hongkong, we have already established firm and mutual-benefit business relationships with customers from,Europe,America and south Asia,supplying obsolete and hard-to-find components to meet their specific needs.

With the principle of “Quality Parts,Customers Priority,Honest Operation,and Considerate Service”,our business mainly focus on the distribution of electronic components. Line cards we deal with include Microchip,ALPS,ROHM,Xilinx,Pulse,ON,Everlight and Freescale. Main products comprise IC,Modules,Potentiometer,IC Socket,Relay,Connector.Our parts cover such applications as commercial,industrial, and automotives areas.

We are looking forward to setting up business relationship with you and hope to provide you with the best service and solution. Let us make a better world for our industry!



## Contact us

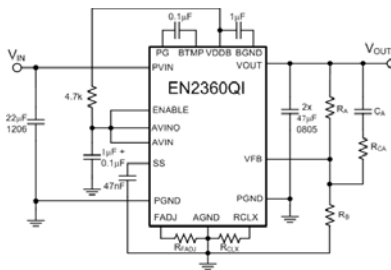
Tel: +86-755-8981 8866 Fax: +86-755-8427 6832

Email & Skype: info@chipsmall.com Web: www.chipsmall.com

Address: A1208, Overseas Decoration Building, #122 Zhenhua RD., Futian, Shenzhen, China



## EN2360QI: 6A PowerSoC DC-DC Step-Down Converter



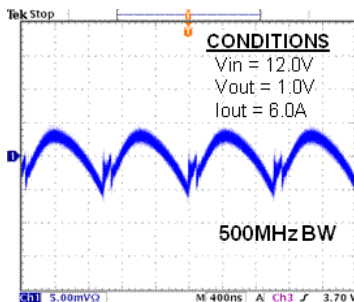
The EN2360QI is a member of the Enpirion® PowerSoC 12V DC-DC step-down converter family. When combined with the 5V and 6V step-down converters, designers of telecommunications, enterprise, storage systems, and industrial and embedded computing equipment have the broadest choice of integrated power management solutions for optimizing footprint and reliability in point-of-load applications without compromising efficiency, noise, or thermals.

### Documentation

Request Datasheet at  
EN2360QI@altera.com

The EN2360QI capitalizes on our proven PowerSoC technology which integrates a controller, high-performance 12V MOSFET switches, compensation network, and inductor all in an 8 x 11 mm QFN package. With a total solution size of <200 mm<sup>2</sup>, the EN2360QI is ideal for space-constrained applications that cannot sacrifice performance. The EN2360QI has peak efficiencies of 94% and excellent output voltage ripple.

Like all Enpirion products, the EN2360QI significantly reduces the traditional engineering analysis and design cycle associated with discrete DC-DC converter designs. Unlike discrete power solutions, the EN2360QI is a turnkey point-of-load power solution that gives the designer a complete power system that is fully simulated, characterized, and production tested.



## Features

- Integrated inductor, MOSFETs, and controller
- Input voltage range: 4.5V to 14V
- Frequency synchronization (external clock)
- High efficiency (up to 94%)
- Output enable pin and power good signal
- Programmable soft-start
- Under-voltage lockout protection
- Thermal shutdown and short-circuit protection
- 8.0 mm x 11.0 mm x 3.0 mm 68-pin QFN package
- Fully RoHS compliant and Pb-free manufacturing line compatible