



Chipsmall Limited consists of a professional team with an average of over 10 year of expertise in the distribution of electronic components. Based in Hongkong, we have already established firm and mutual-benefit business relationships with customers from,Europe,America and south Asia,supplying obsolete and hard-to-find components to meet their specific needs.

With the principle of “Quality Parts,Customers Priority,Honest Operation,and Considerate Service”,our business mainly focus on the distribution of electronic components. Line cards we deal with include Microchip,ALPS,ROHM,Xilinx,Pulse,ON,Everlight and Freescale. Main products comprise IC,Modules,Potentiometer,IC Socket,Relay,Connector.Our parts cover such applications as commercial,industrial, and automotives areas.

We are looking forward to setting up business relationship with you and hope to provide you with the best service and solution. Let us make a better world for our industry!



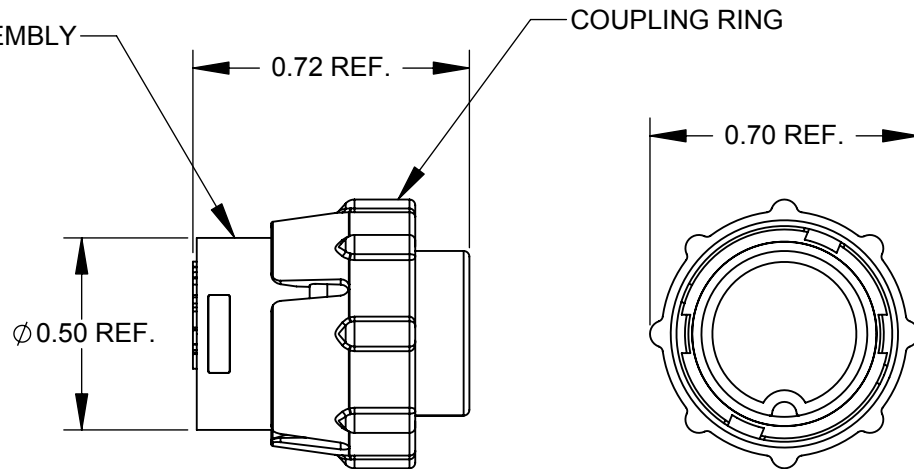
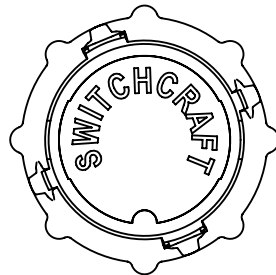
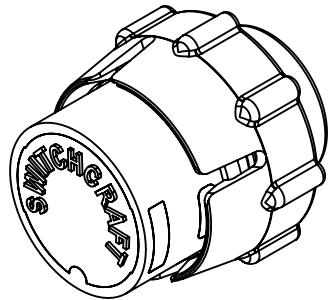
## Contact us

Tel: +86-755-8981 8866 Fax: +86-755-8427 6832

Email & Skype: info@chipsmall.com Web: www.chipsmall.com

Address: A1208, Overseas Decoration Building, #122 Zhenhua RD., Futian, Shenzhen, China





NOTES:

- EN3 SERIES PLUG CAP MATES WITH ANY EN3 SERIES PANEL MOUNT CONNECTOR TO PROVIDE THE FOLLOWING ENVIRONMENTAL PROTECTION:  
IP16/IP18  
IP66/IP68  
NEMA 250 (6P)  
CFR 46 PART 110.20
- MATERIAL:  
CORD CONNECTOR SHELL, COUPLING RING - THERMOPLASTIC, FLAME RETARDANT  
CONNECTOR SHELL INTERIOR - THERMOPLASTIC RUBBER, FLAME RETARDANT
- DIMENSIONS SHOWN FOR REFERENCE ONLY
- THIS PRODUCT IS RoHS COMPLIANT

**CUSTOMER DRAWING**

					THIS DRAWING DESCRIBES A DESIGN CONSIDERED PROPRIETARY IN NATURE, DEVELOPED AND MANUFACTURED BY SWITCHCRAFT INC. AND IS RELEASED ON A CONFIDENTIAL BASIS FOR IDENTIFICATION PURPOSES ONLY.				
					SIZE *	WIDTH *	MULT *	LBS/M *	TEMPER *
					FINISH *			MATERIAL (SEE NOTES)	
					SPEC No. *			SPEC No. *	
					FIRST USED ON *		SCALE 2:1		
A		ECO# 25820	2/27/08	PNK	SRC	DATE DRAWN	BY	CHKD	APVD
REV		ECO NUMBER	DATE	BY	APVD	9/6/07	PNK	PNK	SRC
						3/3/08		3/3/08	
REVISIONS					DO NOT SCALE DRAWING				
					NAME			PART No.	
					PLUG CAP, EN3 SERIES			EN3IPCAP	
								REV A	