



Chipsmall Limited consists of a professional team with an average of over 10 year of expertise in the distribution of electronic components. Based in Hongkong, we have already established firm and mutual-benefit business relationships with customers from,Europe,America and south Asia,supplying obsolete and hard-to-find components to meet their specific needs.

With the principle of “Quality Parts,Customers Priority,Honest Operation,and Considerate Service”,our business mainly focus on the distribution of electronic components. Line cards we deal with include Microchip,ALPS,ROHM,Xilinx,Pulse,ON,Everlight and Freescale. Main products comprise IC,Modules,Potentiometer,IC Socket,Relay,Connector.Our parts cover such applications as commercial,industrial, and automotives areas.

We are looking forward to setting up business relationship with you and hope to provide you with the best service and solution. Let us make a better world for our industry!



Contact us

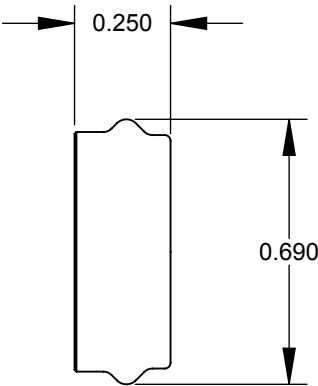
Tel: +86-755-8981 8866 Fax: +86-755-8427 6832

Email & Skype: info@chipsmall.com Web: www.chipsmall.com

Address: A1208, Overseas Decoration Building, #122 Zhenhua RD., Futian, Shenzhen, China



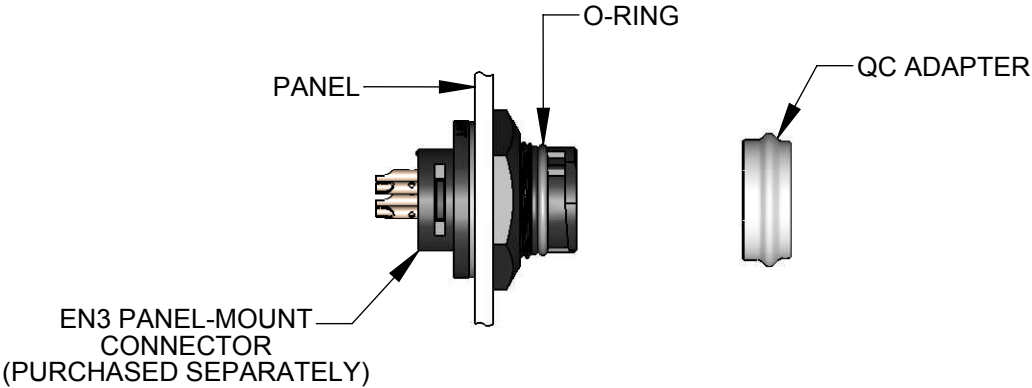
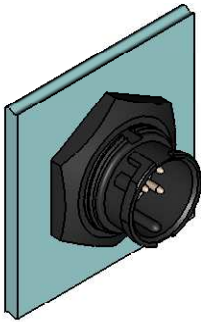
QC ADAPTER



O-RING



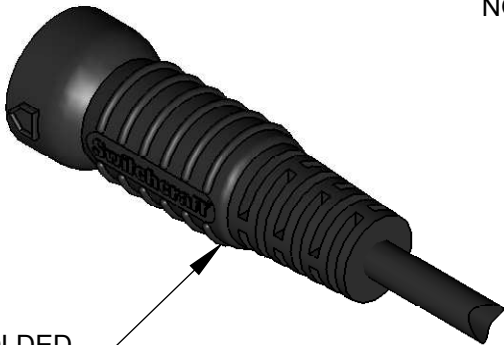
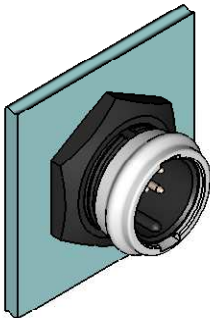
- NOTES:
- 1. DIMENSIONS SHOWN FOR REFERENCE ONLY
 - 2. MATERIAL:
QC ADAPTER - THERMOPLASTIC, LIGHT BEIGE COLOR STANDARD.
O-RING - NEOPRENE RUBBER, BLACK COLOR
(LUBRICATED WITH SYNTHETIC LUBRICANT)
 - 3. THIS PRODUCT IS RoHS COMPLIANT



EN3PQCA INSTALLATION STEPS:

- 1. INSTALL O-RING IN THE GROOVE AT THE FRONT OF CONNECTOR.
- 2. ALIGN QC ADAPTER ON CONNECTOR, PUSH IN, AND ROTATE CLOCKWISE UNTIL DETENT ENGAGES.
- 3. EN3 PANEL-MOUNT CONNECTOR WITH QC ADAPTER INSTALLED TO BE MATED ONLY WITH EN3 CORD CONNECTOR OVERMOLDED FOR QUICK CONNECT / DISCONNECT APPLICATION.

NOTE: TO REVERT BACK TO STANDARD CONNECTOR MATING, REMOVE ONLY THE QC ADAPTER BY ROTATING COUNTERCLOCKWISE. NO NEED TO REMOVE THE O-RING.



EN3 CORD CONNECTOR OVERMOLDED FOR QUICK CONNECT / DISCONNECT APPLICATIONS (PURCHASED SEPARATELY)

CUSTOMER DRAWING

						THIS DRAWING DESCRIBES A DESIGN CONSIDERED PROPRIETARY IN NATURE, DEVELOPED AND MANUFACTURED BY SWITCHCRAFT INC. AND IS RELEASED ON A CONFIDENTIAL BASIS FOR IDENTIFICATION PURPOSES ONLY.										
					UNLESS OTHERWISE SPECIFIED 1. ALL DIMENSIONS IN INCHES - TWO PLACE DECIMALS ±0.02 - THREE PLACE DECIMALS ±0.005	SIZE	WIDTH		MULT		LBS/M		TEMPER			
						FINISH					MATERIAL					
						SPEC No.					SPEC No.					
						FIRST USED ON				SCALE		Switchcraft®				
										2:1						
						DATE DRAWN	BY	CHKD		APVD		SHEET 1 OF 1				
						04/07/10	PNK	PNK		SRC						
A	ECO# 26546	05/17/10	PNK	SRC			05/17/10		05/17/10							
REV	ECO NUMBER	DATE	BY	APVD		NAME					PART No.					REV
REVISIONS					DO NOT SCALE DRAWING	QC ADAPTER EN3 PANEL-MOUNT , RoHS					EN3PQCA					A