



Chipsmall Limited consists of a professional team with an average of over 10 year of expertise in the distribution of electronic components. Based in Hongkong, we have already established firm and mutual-benefit business relationships with customers from,Europe,America and south Asia,supplying obsolete and hard-to-find components to meet their specific needs.

With the principle of “Quality Parts,Customers Priority,Honest Operation,and Considerate Service”,our business mainly focus on the distribution of electronic components. Line cards we deal with include Microchip,ALPS,ROHM,Xilinx,Pulse,ON,Everlight and Freescale. Main products comprise IC,Modules,Potentiometer,IC Socket,Relay,Connector.Our parts cover such applications as commercial,industrial, and automotives areas.

We are looking forward to setting up business relationship with you and hope to provide you with the best service and solution. Let us make a better world for our industry!



Contact us

Tel: +86-755-8981 8866 Fax: +86-755-8427 6832

Email & Skype: info@chipsmall.com Web: www.chipsmall.com

Address: A1208, Overseas Decoration Building, #122 Zhenhua RD., Futian, Shenzhen, China



Type 4X Stainless Steel Wallmount Disconnect Enclosure *Eclipse*

Series

Hinge Door with Handle (Flange w/ multi-vendor cutout)



Application

- Designed to house the following safety disconnect equipment:
 - **ABB Controls** flange mounted variable depth operating mechanisms for disconnect switches and circuit breakers. Cable version for circuit breakers also available.
 - **Allen Bradley** 1494V variable depth flange mounted disconnect switches and circuit breaker operators NEMA 4 rated. Will not accept Allen Bradley 1494F disconnect switches, 1494D circuit breaker operators or 1494V-R1, -R2, or -W2 operating handles).
 - **Cutler Hammer** C361 variable depth flange mounted disconnect switches and C371 circuit breaker operators. Also Flex-Shaft™ handle mechanisms for circuit breakers. Use Cutler Hammer NEMA 4X rated operating handles to maintain NEMA 4X integrity.
 - **Siemens I-T-E Max-Flex™** flange mounted variable depth handles for disconnect switch and circuit breakers. Use handle for NEMA 4 rating.
 - **General Electric** Type STDA flange handles and variable depth operating mechanisms for disconnect switches and circuit breakers. Also SpectraFlex™ cable operators for circuit breakers.
 - **Square D** Class 9422 disconnect switches with flange mounted variable depth operating mechanisms or cable mechanisms and Class 9422 flange mounted variable depth operating mechanism or cable mechanisms for circuit breakers. SN4SS enclosures will not accept Square D Class 9422 bracket-mounted disconnect devices, 9422TG1 or TG2 devices.

Standards

- UL 508 Type 3R, 4 and 4X
- CSA Type 3R, 4 and 4X
- **Complies with**
 - NEMA Type 3R, 4, 4X, 12 and 13
 - JIC EGP-1-1967
 - IEC 60529, IP66
- Appropriate components are required to maintain these standards.

Construction

- Formed 14 or 16 gauge type 304 stainless steel.
- Continuously welded seams.
- Larger sizes include door stiffeners.
- Formed lip on door and enclosure exclude flowing liquids and contaminants.
- Cutouts and holes are provided to suit the flange handle operating

mechanism.

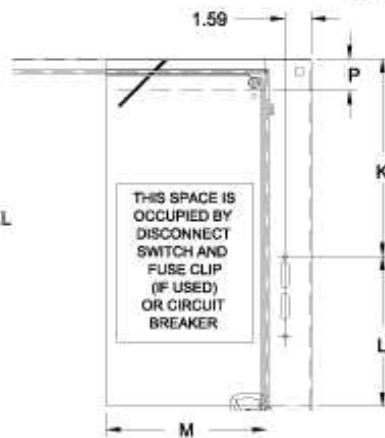
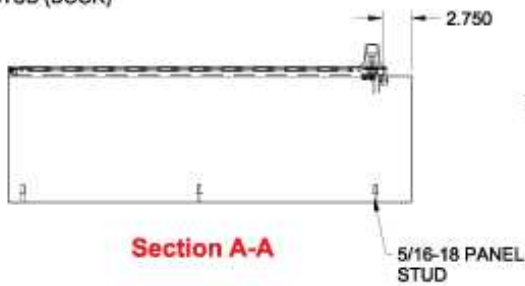
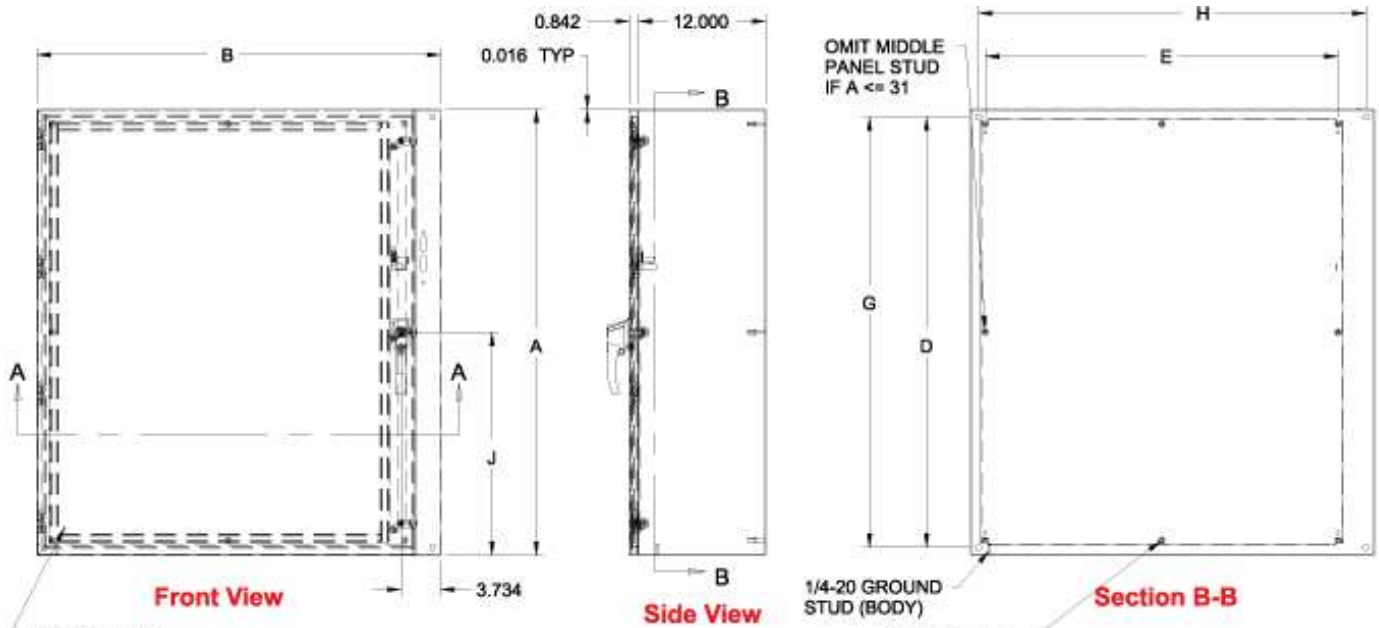
- Doors may be easily removed for modifications and are interchangeable.
- Door is secured with easily operated 2 or 3 point, padlockable handle.
- Cover interlock bracket is included on the door.
- Collar studs are provided for mounting inner panels.
- Removable inner panel is sold separately.
- Seamless poured-in place gasket.
- A bonding stud is provided on the door and a grounding stud is provided in the enclosure.
- Includes hardware kit with panel mounting nuts and sealing washers for wall mounting holes.

Finish

- Disconnects and operating mechanisms are not provided with the enclosure, and must be ordered separately from the manufacturer.

Accessories

- Cooling Products
- Ventilation
- Filtered Fans
- Inner Panels
- Temperature Controls
- Ground Wire Kits
- Blowers and Fans
- Door Stop Kit
- Heaters
- Mounting Foot Kit
- Window Kits



CONSULT VARIOUS DISCONNECT MANUFACTURER'S TO OBTAIN L, M, AND P FOR DIFFERENT BRANDS.
 K = 4.75 WHEN C = 8.00
 K = 11.62 WHEN C = 12.00
 P = WIRING BEND SPACE WHEN DISCONNECT IS INSTALLED IN ENCLOSURE

ORDER PANELS SEPERATELY
 ALL PANELS ARE 12 GA.

Part No.	Enclosure Size			Door Gauge	Body Gauge	Opt. Panel Part No.	Panel Size		Mounting		Latches qty style	# Panel Studs	J
	A	B	C				D	E	G	H			
EN4DSC20228SS	20.00	22.00	8.00	14	16	EP2020	18.17	18.17	18.50	20.50	1 2-pt	4	5
EN4DSC24228SS	24.00	22.00	8.00	14	16	EP2420	22.17	18.17	22.50	20.50	1 2-pt	4	6
EN4DSC24268SS	24.00	26.00	8.00	14	16	EP2424	22.17	22.17	22.50	24.50	1 2-pt	4	6
EN4DSC30268SS	30.00	26.00	8.00	14	16	EP3024	28.17	22.17	28.50	24.50	1 2-pt	4	6
EN4DSC36268SS	36.00	26.00	8.00	14	16	EP3624	34.17	22.17	34.50	24.50	1 2-pt	6	6
EN4DSC36328SS	36.00	32.00	8.00	14	14	EP3630	34.17	28.17	34.50	30.50	1 2-pt	6	6
EN4DSC423212SS	42.00	32.00	12.00	14	14	EP4230	40.17	28.17	40.50	30.50	1 3-pt	6	21
EN4DSC423812SS	42.00	38.00	12.00	14	14	EP4236	40.17	34.17	40.50	36.50	1 3-pt	8	21
EN4DSC483812SS	48.00	38.00	12.00	14	14	EP4836	46.17	34.17	46.50	36.50	1 3-pt	8	24
EN4DSC603812SS	60.00	38.00	12.00	14	14	EP6036	58.17	34.17	58.50	36.50	1 3-pt	8	30

Data subject to change without notice

