



Chipsmall Limited consists of a professional team with an average of over 10 year of expertise in the distribution of electronic components. Based in Hongkong, we have already established firm and mutual-benefit business relationships with customers from,Europe,America and south Asia,supplying obsolete and hard-to-find components to meet their specific needs.

With the principle of “Quality Parts,Customers Priority,Honest Operation,and Considerate Service”,our business mainly focus on the distribution of electronic components. Line cards we deal with include Microchip,ALPS,ROHM,Xilinx,Pulse,ON,Everlight and Freescale. Main products comprise IC,Modules,Potentiometer,IC Socket,Relay,Connector.Our parts cover such applications as commercial,industrial, and automotives areas.

We are looking forward to setting up business relationship with you and hope to provide you with the best service and solution. Let us make a better world for our industry!



Contact us

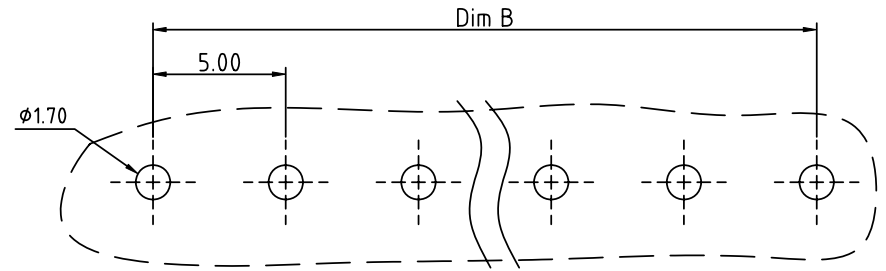
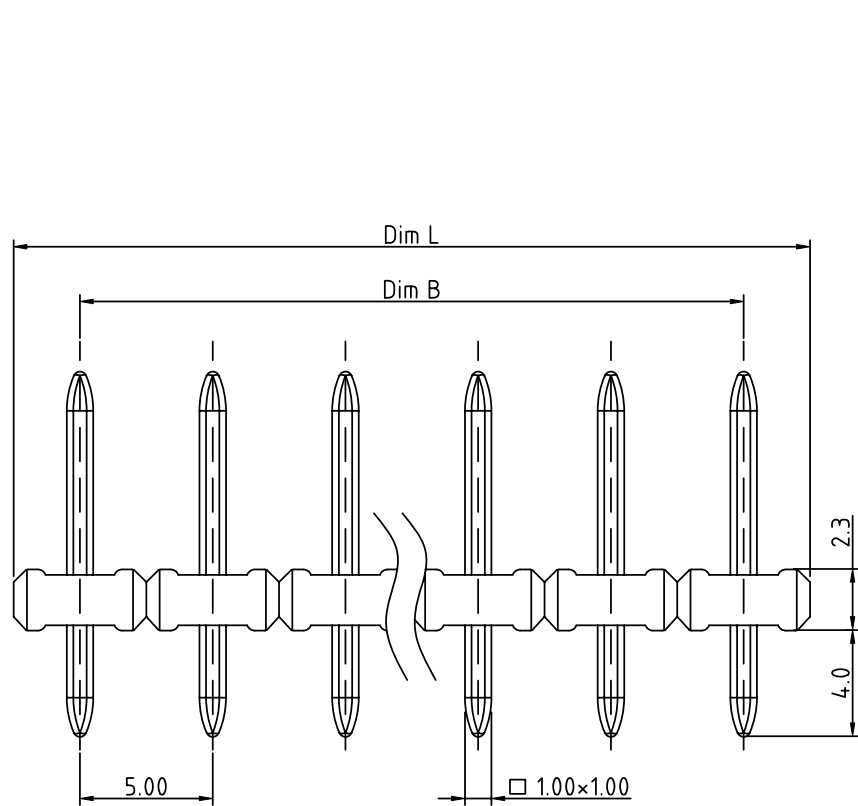
Tel: +86-755-8981 8866 Fax: +86-755-8427 6832

Email & Skype: info@chipsmall.com Web: www.chipsmall.com

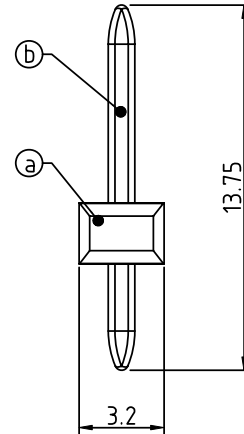
Address: A1208, Overseas Decoration Building, #122 Zhenhua RD., Futian, Shenzhen, China



PRODUCT NUMBER	PITCH
EPxx000000JOG	5.00 mm



RECOMMENDED P.C.B LAYOUT
TOP VIEW



Material:

- Item (a) Terminal body: Thermoplastic Black Color UL94V-0
- Item (b) Pin : Brass , Tin plated

Electrical:

- Voltage rating: 300V
- Current rating: 15A
- Withstanding Voltage: 1.6KV
- Operating temperature: -40°C to +115°C
- Soldering temperature: 260°C±5°C/5 Sec
- Safety Approval: us

N=NUMBER OF POLES

Dim L=N×5.00
Dim B=(N-1)×5.00

POLES	Tolerance
2P-5P	±0.10
6P-10P	±0.15
11P-15P	±0.20
16P-20P	±0.25
21P-24P	±0.30

PART NO.: EP xx 0 0 0 0 00J0 G

Solid block
No. of poles
02 2 poles
03 3 poles
... ..
24 24 poles

RoHS compliant
(lead<4%)
In copper Alloy

mat'l. code		surface ASME Y14.5 ✓	tolerance ASME Y14.5	projection 	product family TERMINAL BLOCK
ltr	ecn no	dr	date	tolerances unless otherwise specified	title TERMINAL BLOCK PLUGGABLE SOCKET, VERTICAL
				angles X°±1'	
				scale MM	dwg no EPxx000000JOG
		dr	EVIN ZHONG	041714	sheet 1 of 1
		enr	EVIN ZHONG	041714	size A4
		chr	HANKE FENG	041714	type CUSTOMER Drawing
		appd	SHI JUN	041714	
sheet index	revision sheet	A	1		