



Chipsmall Limited consists of a professional team with an average of over 10 year of expertise in the distribution of electronic components. Based in Hongkong, we have already established firm and mutual-benefit business relationships with customers from,Europe,America and south Asia,supplying obsolete and hard-to-find components to meet their specific needs.

With the principle of “Quality Parts,Customers Priority,Honest Operation,and Considerate Service”,our business mainly focus on the distribution of electronic components. Line cards we deal with include Microchip,ALPS,ROHM,Xilinx,Pulse,ON,Everlight and Freescale. Main products comprise IC,Modules,Potentiometer,IC Socket,Relay,Connector.Our parts cover such applications as commercial,industrial, and automotives areas.

We are looking forward to setting up business relationship with you and hope to provide you with the best service and solution. Let us make a better world for our industry!



## Contact us

Tel: +86-755-8981 8866 Fax: +86-755-8427 6832

Email & Skype: info@chipsmall.com Web: www.chipsmall.com

Address: A1208, Overseas Decoration Building, #122 Zhenhua RD., Futian, Shenzhen, China



## ESB32 Middle Current Push Switches

Type: **ESB32(H=12.8 mm)**



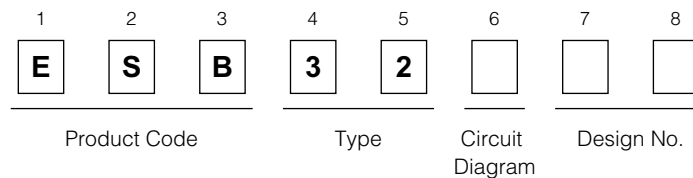
### ■ Features

- Long travel
- Can be fitted to a printed circuit board.

### ■ Recommended Applications

- Operation switches for automobiles (overdrive, hazard and map lamp switches etc.)
- Used for detecting function in relay and solenoid controls

### ■ Explanation of Part Numbers



- 1: Lever height=25.0 mm, N.O.
- 2: Lever height=25.0 mm, N.C.
- 3: Lever height=23.0 mm, N.O.
- 4: Lever height=23.0 mm, N.C.

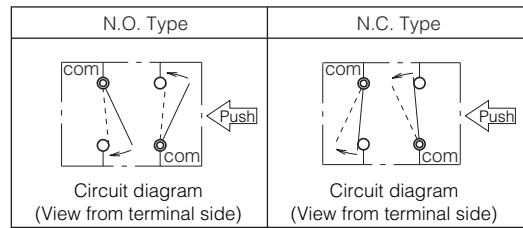
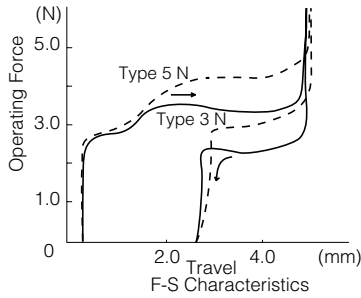
### ■ Specifications

Rating	0.1 A 12 Vdc to 3 A 12 Vdc (Resistive load)
Travel	Lock Travel: 2.45 mm, Full Travel: 4.5 mm Lock Travel: 2.8 mm, Full Travel: 4.5 mm
Mounting Height	12.8 mm
Poles and Throws	2-poles 1-throw (N.O. type or N.C. type)
Operating Mode	Self-lock, Non-lock
Operating Force	5.0 N±3.0 N, 3.5 N±1.5 N
Minimum Quantity/Packing Unit	50 pcs. Polyethylene Bag (Bulk)
Quantity/Carton	1000 pcs.

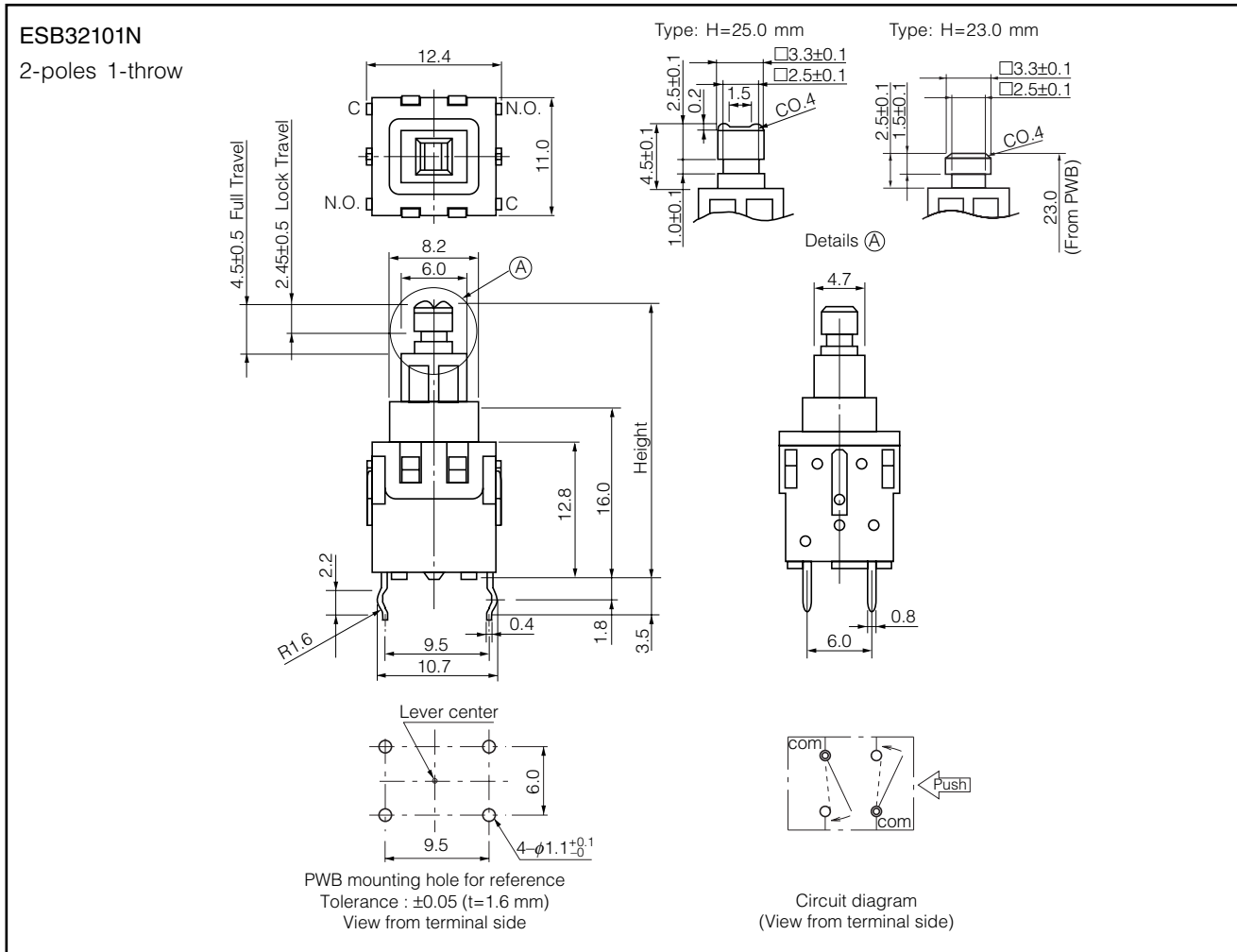
### Standard Products

Lever Height	Circuit Diagram	Operating Force	Formed Terminals	
			PP	NL
25.0 mm	N.O.	3.5 N	ESB32101N	ESB32132
		5.0 N	ESB32151	ESB32152
	N.C.	3.5 N	ESB32231	ESB32232
		5.0 N	ESB32251	-
23.0 mm	N.O.	3.5 N	ESB32331	ESB32332
		5.0 N	ESB32351	-
	N.C.	3.5 N	ESB32431	-
		5.0 N	-	-

Note: PP=Self-lock, NL=Non-lock



### Dimensions in mm (not to scale)



### Application Notes:

- Operating force should be applied at the center of the lever.

Design and specifications are each subject to change without notice. Ask factory for the current technical specifications before purchase and/or use. Should a safety concern arise regarding this product, please be sure to contact us immediately.