



Chipsmall Limited consists of a professional team with an average of over 10 year of expertise in the distribution of electronic components. Based in Hongkong, we have already established firm and mutual-benefit business relationships with customers from,Europe,America and south Asia,supplying obsolete and hard-to-find components to meet their specific needs.

With the principle of “Quality Parts,Customers Priority,Honest Operation,and Considerate Service”,our business mainly focus on the distribution of electronic components. Line cards we deal with include Microchip,ALPS,ROHM,Xilinx,Pulse,ON,Everlight and Freescale. Main products comprise IC,Modules,Potentiometer,IC Socket,Relay,Connector.Our parts cover such applications as commercial,industrial, and automotives areas.

We are looking forward to setting up business relationship with you and hope to provide you with the best service and solution. Let us make a better world for our industry!



Contact us

Tel: +86-755-8981 8866 Fax: +86-755-8427 6832

Email & Skype: info@chipsmall.com Web: www.chipsmall.com

Address: A1208, Overseas Decoration Building, #122 Zhenhua RD., Futian, Shenzhen, China

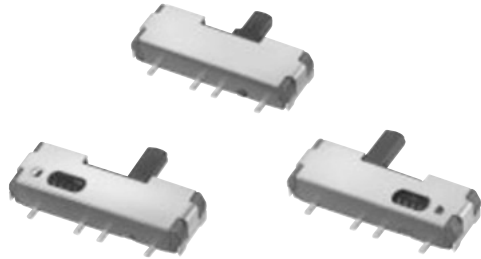


2 mm Size Slide Switches for Reflow Soldering

Japan

Type: **ESD16**

Self-returning and SMD type



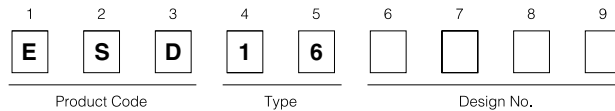
■ Features

- Dual application: detent and self-returning type
- Available for reflow soldering
- Available for automatic mounting

■ Recommended Applications

- Signal switches for Cordless Telephones
- Power switches for Digital Still Cameras and Notebook Personal Computers

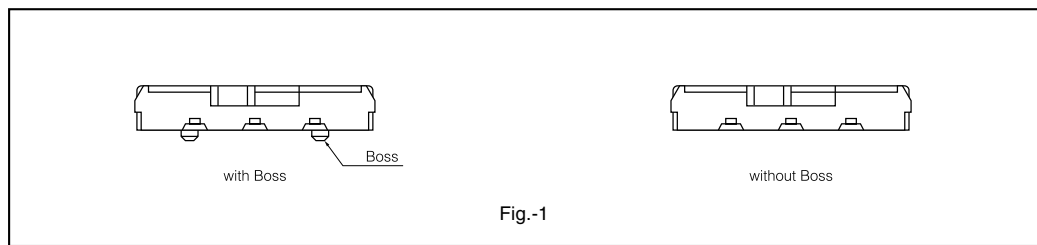
■ Explanation of Part Numbers



■ Standard Types and Part Numbers

Packaging Style	Boss		with Boss		without Boss	
	Type	Lever length	2.0 mm	2.5 mm	2.0 mm	2.5 mm
Embossed Taping	with Detent		ESD165205	ESD165206	ESD165207	ESD165208
	Self-returning (Right)		ESD165225	ESD165226	ESD165227	ESD165228
	Self-returning (Left)		ESD165235	ESD165236	ESD165237	ESD165238
Bulk Packaging	with Detent		ESD165255	ESD165256	ESD165257	ESD165258
	Self-returning (Right)		ESD165275	ESD165276	ESD165277	ESD165278
	Self-returning (Left)		ESD165285	ESD165286	ESD165287	ESD165288

Note: With/without Boss, See Fig.-1



Major Specifications

Types	with Detent	Self-returning
Lever Position	Horizontal	
Rating	50 μ A 3 Vdc to 0.2 A 5 Vdc	
Travel	2.0 mm	2.7 mm
Poles & Throws	1-pole 2-throws	
Switching Mode	Non-shorting	
Lever Length	2 mm, 2.5mm	
Minimum Quantity/Packing Unit	2000 pcs. (Reel Pack)	
Quantity/Carton	4000 pcs.	

Dimensions in mm (not to scale)

<p>No. 1</p> <p>Registered by EIAJ-SMD Outline Registration System</p> <p>ESD165205</p> <p>1-pole 2-throws With Detent Operating Force ② ↔ ① 1.96 N±0.98 N</p>	<p>Registered by EIAJ-SMD Outline Registration System</p> <p>Circuit diagram</p>
<p>No. 2</p> <p>Registered by EIAJ-SMD Outline Registration System</p> <p>ESD165225</p> <p>1-pole 2-throws Self-returning (Right) Operating Force ② ↔ ① 2.16 N±0.98 N</p>	<p>Registered by EIAJ-SMD Outline Registration System</p> <p>Circuit diagram</p>
<p>No. 3</p> <p>Registered by EIAJ-SMD Outline Registration System</p> <p>ESD165235</p> <p>1-pole 2-throws Self-returning (Left) Operating Force ② ↔ ① 2.16 N±0.98 N</p>	<p>Registered by EIAJ-SMD Outline Registration System</p> <p>Circuit diagram</p>

Packaging Specifications

Standard Reel Dimensions in mm (not to scale)

<p>Taping Reel</p>	<p>Embossed Carrier Taping</p>
--------------------	--------------------------------