



Chipsmall Limited consists of a professional team with an average of over 10 year of expertise in the distribution of electronic components. Based in Hongkong, we have already established firm and mutual-benefit business relationships with customers from,Europe,America and south Asia,supplying obsolete and hard-to-find components to meet their specific needs.

With the principle of "Quality Parts,Customers Priority,Honest Operation,and Considerate Service",our business mainly focus on the distribution of electronic components. Line cards we deal with include Microchip,ALPS,ROHM,Xilinx,Pulse,ON,Everlight and Freescale. Main products comprise IC,Modules,Potentiometer,IC Socket,Relay,Connector.Our parts cover such applications as commercial,industrial, and automotives areas.

We are looking forward to setting up business relationship with you and hope to provide you with the best service and solution. Let us make a better world for our industry!



Contact us

Tel: +86-755-8981 8866 Fax: +86-755-8427 6832

Email & Skype: info@chipsmall.com Web: www.chipsmall.com

Address: A1208, Overseas Decoration Building, #122 Zhenhua RD., Futian, Shenzhen, China

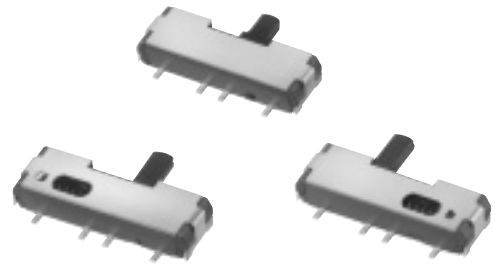


2 mm Size Slide Switches for Reflow Soldering

Japan

Type: **ESD16**

Self-returning, SMD type



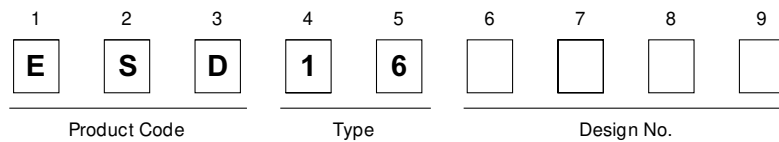
■ Features

- Dual application (detent and self-returning type)
- Available for reflow soldering
- Available for automatic mounting

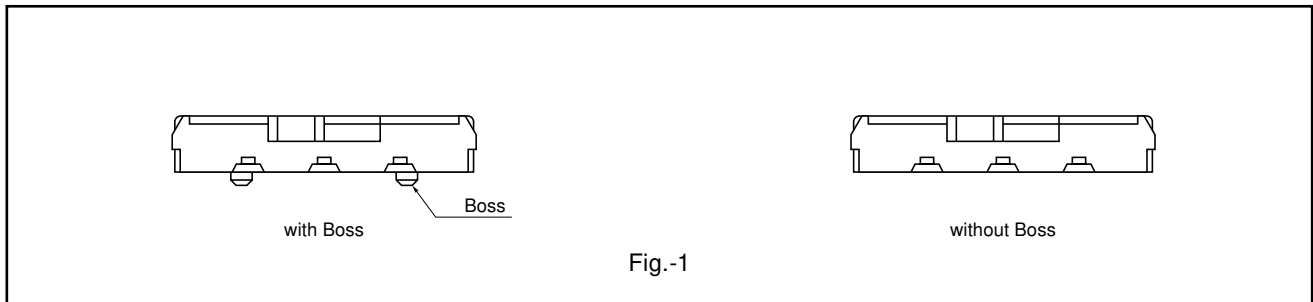
■ Recommended Applications

- Signal switches for cordless telephones
- Power switches for digital still cameras and notebook personal computers

■ Explanation of Part Numbers



■ Standard Types and Part Numbers



Packaging Style	Type	with Boss	without Boss		
		Lever length	2.0 mm	2.5 mm	2.0 mm
Embossed Taping (Reel Pack)	with Detent	ESD165205	ESD165206	ESD165207	ESD165208
	Self-returning (Right)	ESD165225	ESD165226	ESD165227	ESD165228
	Self-returning (Left)	ESD165235	ESD165236	ESD165237	ESD165238
Polyethylene Bag (Bulk)	with Detent	ESD165255	ESD165256	ESD165257	ESD165258
	Self-returning (Right)	ESD165275	ESD165276	ESD165277	ESD165278
	Self-returning (Left)	ESD165285	ESD165286	ESD165287	ESD165288

Note: With/without Boss, See Fig.-1

Specifications

Types	with Detent	Self-returning
Lever Position	Horizontal	
Rating	50 μ A 3 Vdc to 0.2 A 5 Vdc (Resistive load)	
Travel	2.0 mm	2.7 mm
Mounting Height	2.0 mm	
Poles and Throws	1-pole 2-throws	
Switching Mode	Non-shorting	
Lever Length	2.0 mm, 2.5 mm	
Minimum Quantity/Packing Unit	200 pcs. Polyethylene Bag (Bulk) / 2000 pcs. Embossed Taping (Reel Pack)	
Quantity/Cartron	4000 pcs.	

Dimensions in mm (not to scale)

<p>No. 1</p> <p>1-pole 2-throws With Detent</p> <table border="1"> <tr> <th>Part Number</th> <th>Lever length</th> </tr> <tr> <td>ESD165205</td> <td>2.0</td> </tr> <tr> <td>ESD165206</td> <td>2.5</td> </tr> </table> <p>Operating Force $\text{b} \leftrightarrow \text{a}$ 1.96 N \pm 0.98 N</p>	Part Number	Lever length	ESD165205	2.0	ESD165206	2.5		<p>Circuit diagram</p> <p>View from terminal side</p> <p>Recommended PWB piercing plan</p> <p>Tolerance: ± 0.05</p>
Part Number	Lever length							
ESD165205	2.0							
ESD165206	2.5							
<p>No. 2</p> <p>1-pole 2-throws Self-returning (Right)</p> <table border="1"> <tr> <th>Part Number</th> <th>Lever length</th> </tr> <tr> <td>ESD165225</td> <td>2.0</td> </tr> <tr> <td>ESD165226</td> <td>2.5</td> </tr> </table> <p>Operating Force $\text{b} \leftrightarrow \text{a}$ 2.16 N \pm 0.98 N</p>	Part Number	Lever length	ESD165225	2.0	ESD165226	2.5		<p>Circuit diagram</p> <p>View from terminal side</p> <p>Recommended PWB piercing plan</p> <p>Tolerance: ± 0.05</p>
Part Number	Lever length							
ESD165225	2.0							
ESD165226	2.5							
<p>No. 3</p> <p>1-pole 2-throws Self-returning (Left)</p> <table border="1"> <tr> <th>Part Number</th> <th>Lever length</th> </tr> <tr> <td>ESD165235</td> <td>2.0</td> </tr> <tr> <td>ESD165236</td> <td>2.5</td> </tr> </table> <p>Operating Force $\text{b} \leftrightarrow \text{a}$ 2.16 N \pm 0.98 N</p>	Part Number	Lever length	ESD165235	2.0	ESD165236	2.5		<p>Circuit diagram</p> <p>View from terminal side</p> <p>Recommended PWB piercing plan</p> <p>Tolerance: ± 0.05</p>
Part Number	Lever length							
ESD165235	2.0							
ESD165236	2.5							

Packaging Specifications

Standard Reel Dimensions in mm (not to scale)

<p>Taping Reel</p>	<p>Embossed Carrier Taping</p>
--------------------	--------------------------------