



Chipsmall Limited consists of a professional team with an average of over 10 year of expertise in the distribution of electronic components. Based in Hongkong, we have already established firm and mutual-benefit business relationships with customers from,Europe,America and south Asia,supplying obsolete and hard-to-find components to meet their specific needs.

With the principle of "Quality Parts,Customers Priority,Honest Operation,and Considerate Service",our business mainly focus on the distribution of electronic components. Line cards we deal with include Microchip,ALPS,ROHM,Xilinx,Pulse,ON,Everlight and Freescale. Main products comprise IC,Modules,Potentiometer,IC Socket,Relay,Connector.Our parts cover such applications as commercial,industrial, and automotives areas.

We are looking forward to setting up business relationship with you and hope to provide you with the best service and solution. Let us make a better world for our industry!



Contact us

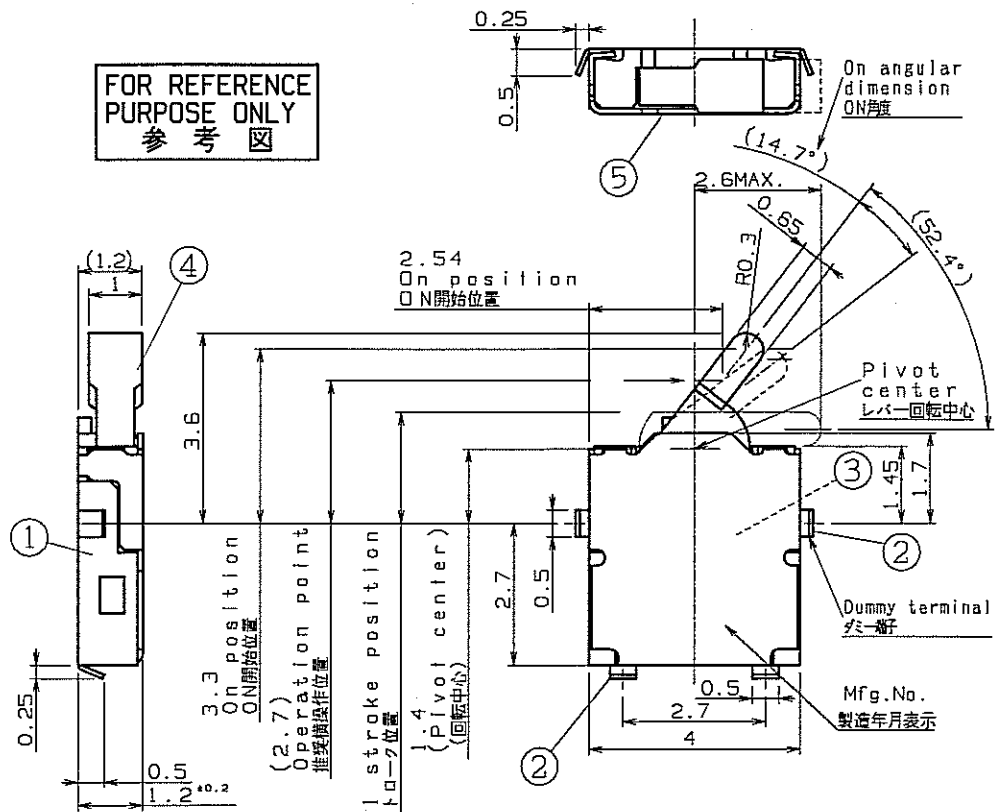
Tel: +86-755-8981 8866 Fax: +86-755-8427 6832

Email & Skype: info@chipsmall.com Web: www.chipsmall.com

Address: A1208, Overseas Decoration Building, #122 Zhenhua RD., Futian, Shenzhen, China



FOR REFERENCE
PURPOSE ONLY
参考図

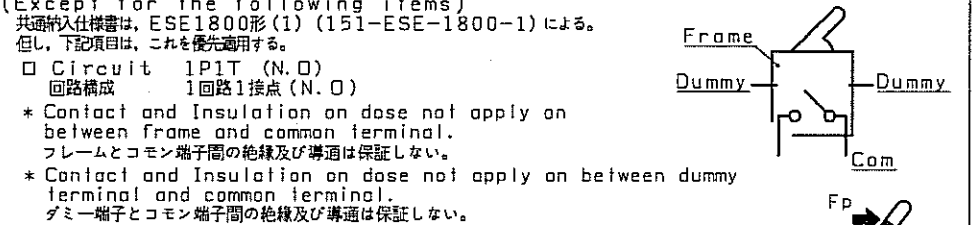


Commercial Tolerance 普通公差	Syn. 符号	Date 年月日	Revision 改訂履歴	Signed 記印	Checked 検印
±0.3	△				

Parts list (材料明細)

No. 記号	Part name 部品名	Material 材質	Remarks 記号
1	Case ケース	LCP Resin LCP樹脂	(Black color) (黒色)
2	Terminal 端子	Phosphor Bronze リン青銅条	Silver plating 銀めっき
3	Contact piece 接触片	Copper Alloy 銅合金	Silver plating 銀めっき
4	Lever レバー	PPHS Resin PPHS樹脂	(Black color) (黒色)
5	Frame フレーム	Stainless Steel ステンレス SUS	

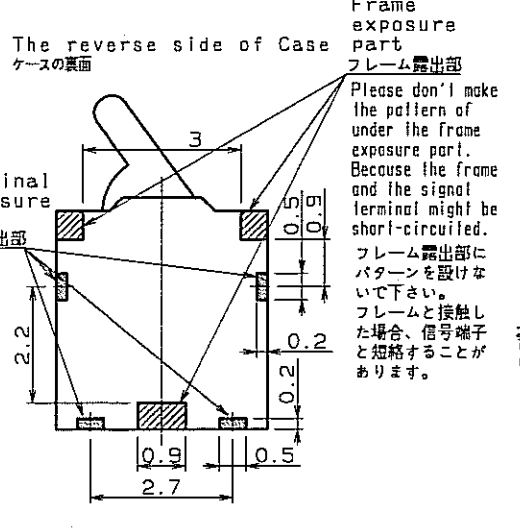
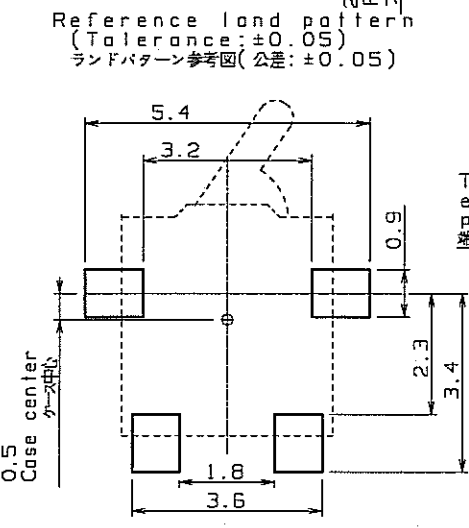
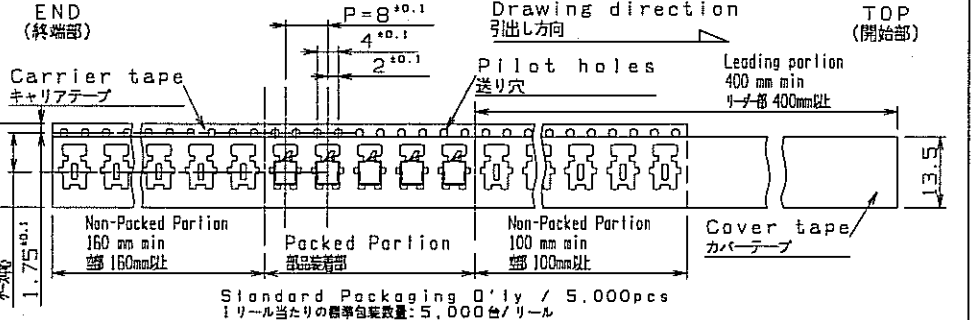
Specifications 納入仕様 (スイッチに関する事項)
Common specification ESE1800 TYPE(1) (151-ESE-1800-1) shall apply.
(Except for the following items)
共通納入仕様書は、ESE1800形(1) (151-ESE-1800-1)による。
但し、下記項目は、これを優先適用する。



4.2 Operating force Fp=0.3N MAX. 操作力 Fp=0.3N以下

Specification of Taping Package (テーピングに関する事項)

In accordance with common specifications SPECIFICATION OF TAPING PACKAGE(151-SW-0039-2).
And the following item shall be applied preferentially.
共通納入仕様書は、エンボステーピング仕様 (151-SW-0039-2) による。
但し、下記項目は、これを優先する。



A3 3rd Angle System Unit : mm
三角法 単位: mm

Panasonic Electronic Devices Co., Ltd. Electromechanical Components Business Unit
パナソニック エレクトロニックデバイス株式会社 機構部品BU

Estn. Date 制定 '06. 8. 1	Individual Specifications 個別納入仕様書	Customer 納入先	Standard 標準品
Scale 尺度 10	Designed 設計 T. Tsuda 津田	Drawn 製図 K. Taniguchi 谷口	Traced 写図 K. Shigeta 重田
Checked 検回 Y. Yasufuku 安福	Checked 検回 Y. Kudo 工藤	Name 四名 Detector switch ディテクタースイッチ ESE18R11A	No. 番 151-ESE-18R11A (R00)
1	7.06. 8. 1	7.06. 8. 1	7.06. 8. 1
PART-NM sw-151w-esel8r11a-std-r**			