



Chipsmall Limited consists of a professional team with an average of over 10 year of expertise in the distribution of electronic components. Based in Hongkong, we have already established firm and mutual-benefit business relationships with customers from,Europe,America and south Asia,supplying obsolete and hard-to-find components to meet their specific needs.

With the principle of “Quality Parts,Customers Priority,Honest Operation,and Considerate Service”,our business mainly focus on the distribution of electronic components. Line cards we deal with include Microchip,ALPS,ROHM,Xilinx,Pulse,ON,Everlight and Freescale. Main products comprise IC,Modules,Potentiometer,IC Socket,Relay,Connector.Our parts cover such applications as commercial,industrial, and automotives areas.

We are looking forward to setting up business relationship with you and hope to provide you with the best service and solution. Let us make a better world for our industry!



## Contact us

Tel: +86-755-8981 8866 Fax: +86-755-8427 6832

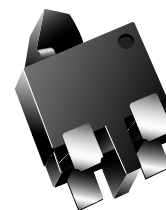
Email & Skype: info@chipsmall.com Web: www.chipsmall.com

Address: A1208, Overseas Decoration Building, #122 Zhenhua RD., Futian, Shenzhen, China



## 2mm Size Detector Switches, Type 2N

Type: **ESE22**



Mounting height: 1.9mm, SMD, wiping contact construction with leaf spring, reflow soldering applicable, embossed taping available.

### ■ Features

- Light operating force: 300 N (31 gf) max.
- Highly reliable through our own self-wiping leaf spring contact construction
- Extremely thin profile and lightweight SMD

### ■ Recommended Applications

- Detection of mechanical position mode for headphone stereos, camcorders, MD players

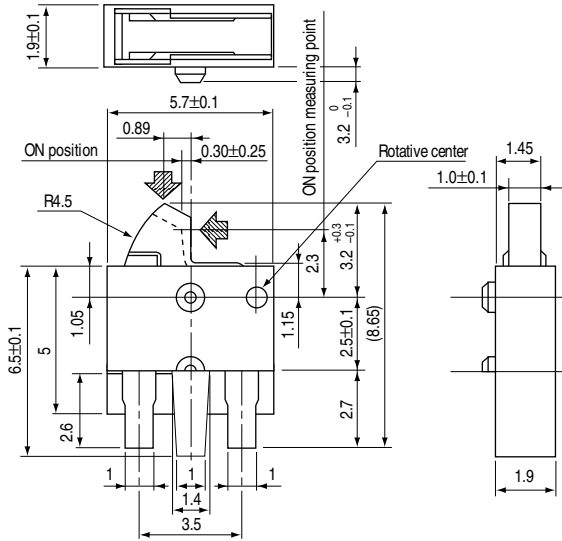
### ■ Major Specifications

Rating	10 mA 5 V DC (resistive load)	Mounting height	1.9mm
Operating force	300 mN (31 gf) max.	Poles and positions	1-pole, 1-position

### ■ Dimensions in mm (not to scale)

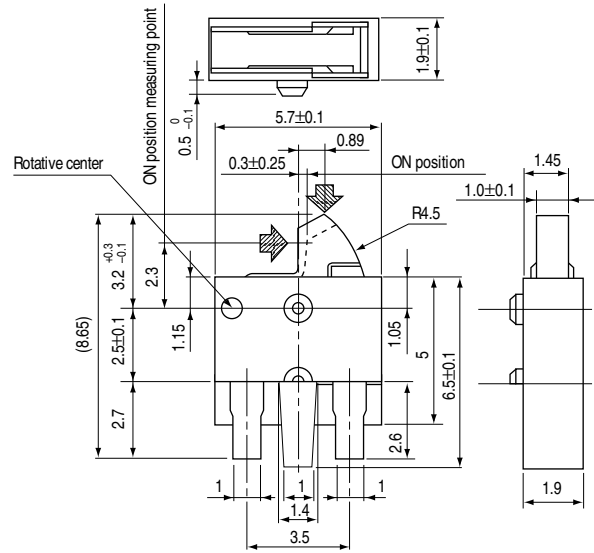
#### Type A

Part No.	Packaging
ESE22MH1	Bulk packaging
ESE22MH2	Embossed taping



#### Type B

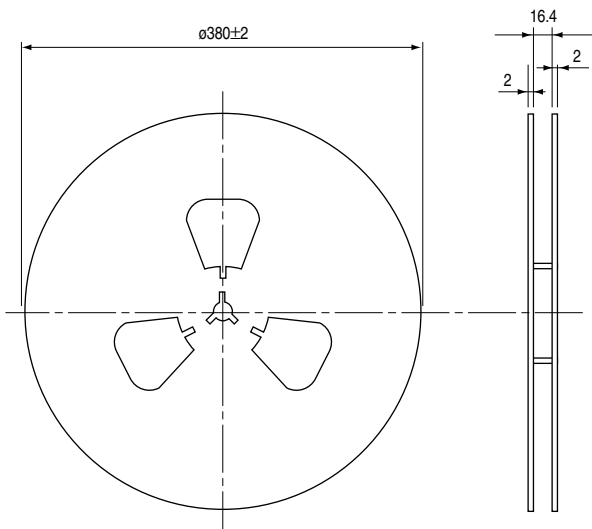
Part No.	Packaging
ESE22MH3	Bulk packaging
ESE22MH4	Embossed taping



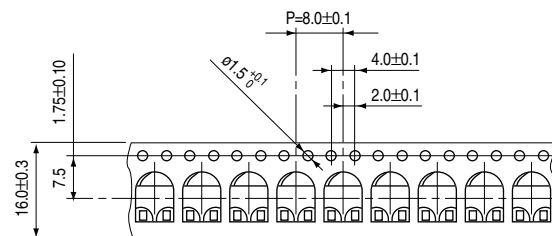
### ■ Packaging Methods

Standard Reel Dimensions in mm (not to scale)

#### Taping Reel



#### Embossed Carrier Taping



#### Standard Packaging Quantity

Part No.	Packaging
ESE22MH2	4,000 pcs.
ESE22MH4	4,000 pcs.