



Chipsmall Limited consists of a professional team with an average of over 10 year of expertise in the distribution of electronic components. Based in Hongkong, we have already established firm and mutual-benefit business relationships with customers from,Europe,America and south Asia,supplying obsolete and hard-to-find components to meet their specific needs.

With the principle of “Quality Parts,Customers Priority,Honest Operation,and Considerate Service”,our business mainly focus on the distribution of electronic components. Line cards we deal with include Microchip,ALPS,ROHM,Xilinx,Pulse,ON,Everlight and Freescale. Main products comprise IC,Modules,Potentiometer,IC Socket,Relay,Connector.Our parts cover such applications as commercial,industrial, and automotives areas.

We are looking forward to setting up business relationship with you and hope to provide you with the best service and solution. Let us make a better world for our industry!



Contact us

Tel: +86-755-8981 8866 Fax: +86-755-8427 6832

Email & Skype: info@chipsmall.com Web: www.chipsmall.com

Address: A1208, Overseas Decoration Building, #122 Zhenhua RD., Futian, Shenzhen, China

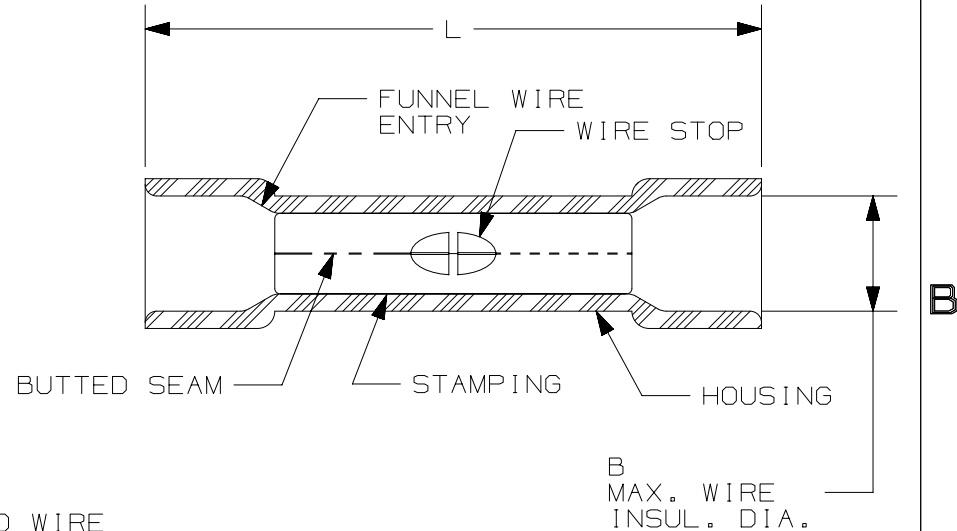


THIS COPY IS PROVIDED ON A RESTRICTED BASIS AND IS NOT TO BE USED IN ANY WAY DETRIMENTAL TO THE INTERESTS OF PANDUIT CORP.

PANDUIT PART #	WIRE SIZE AWG [mm ²]	COLOR	DIMENSIONS in. [mm]	
			L± .03 [0,8]	B± .01 [0,3]
ESV18BX	#22-18 [0,5-1,0]	RED	1.03 [26,2]	.17 [4,3]
ESV14BX	#16-14 [1,5-2,5]	BLUE	1.04 [26,4]	.20 [5,1]
ESV10BX	#12-10 [4,0-6,0]	YELLOW	1.18 [30,0]	.25 [6,4]

NOTES:

- USED FOR:
 - SOLID OR STRANDED COPPER WIRE
 - 221°F [105°C] MAX OPERATING TEMPERATURE
 - 600V MAX VOLTGE RATING
 - ESV10BX 300V MAX VOLTAGE RATING WITH 10 AWG SOLID WIRE
- INSTALLATION TOOLS: CT-100A, CT-160, CT-260, CT-1550, CT-1551, CT-600A (CT-550CH), CT-2500 (CT-2550CH)
 - #22-18 AWG [0,5-1,0 mm²]: CT-100A, CT-160, CT-260, CT-400, CT-600A (CT-550CH), CT-2500 (CT-2550CH)
 - #16-14 AWG [1,5-2,5 mm²]: CT-100A, CT-160, CT-260, CT-400, CT-460, CT-600-A, CT-2500
 - #12-10 [4,0-6,0 mm²] STRANDED AND #12 AWG SOLID COPPER WIRE WITH CT-1550 & CT-1551 TOOLS: CT-100A, CT-160, CT-260, CT-460, CT-600-A (CT-550CH), CT-2500 (CT-2550CH)
- WIRE STRIP LENGTH: 5/16" ^{+1/32}/₋₀ [7,9mm ^{+0,8}/₋₀]
- MATERIAL:
 - STAMPING (#22-18 & #16-14): .03" [0,8] THK COPPER, TIN PLATED
 - STAMPING (#12-10): .04" [1,0] THK COPPER, TIN PLATED
 - HOUSING: VINYL
- SEE www.panduit.com FOR PACKAGE QUANTITIES INDICATED BY PART NUMBER SUFFIX
- DIMENSIONS IN BRACKETS ARE METRIC EQUIVALENT



LISTED
587H
E52164



CERTIFIED
LR31212

TITLE STRONGHOLD BUTT SPLICE, EXPANDED DIAMETER VINYL INSULATED, BUTTED SEAM #22-10 AWG		CUSTOMER DRAWING	
ITEM REVISION NAME 00123SHC/00		PANDUIT	
DATASET FILE NAME 00123SHC_DC/00A			
UNLESS OTHERWISE SPECIFIED, DIMENSIONAL TOLERANCES ARE: IN [mm] .x ± .1 [2.54] .xxx ± .005 [0.127] .xx ± .01 [0.25] ANGLES ± 5°		MATERIAL: SEE NOTES	
DRAWING NUMBER: SH41181		DRAWING NUMBER: SHT 1 OF 1	
DRAWN BY TMR	DATE 10.10.17	CHK JHNU	SCALE N.T.S.
REV	DATE	BY	CHK
00	10.10.17	TMR	JHNU
DESCRIPTION DRAWING RELEASED		APR	RGB
ECN 00123SH		SIZE A	

D10100DA/15