



Chipsmall Limited consists of a professional team with an average of over 10 year of expertise in the distribution of electronic components. Based in Hongkong, we have already established firm and mutual-benefit business relationships with customers from,Europe,America and south Asia,supplying obsolete and hard-to-find components to meet their specific needs.

With the principle of “Quality Parts,Customers Priority,Honest Operation,and Considerate Service”,our business mainly focus on the distribution of electronic components. Line cards we deal with include Microchip,ALPS,ROHM,Xilinx,Pulse,ON,Everlight and Freescale. Main products comprise IC,Modules,Potentiometer,IC Socket,Relay,Connector.Our parts cover such applications as commercial,industrial, and automotives areas.

We are looking forward to setting up business relationship with you and hope to provide you with the best service and solution. Let us make a better world for our industry!



## Contact us

Tel: +86-755-8981 8866 Fax: +86-755-8427 6832

Email & Skype: info@chipsmall.com Web: www.chipsmall.com

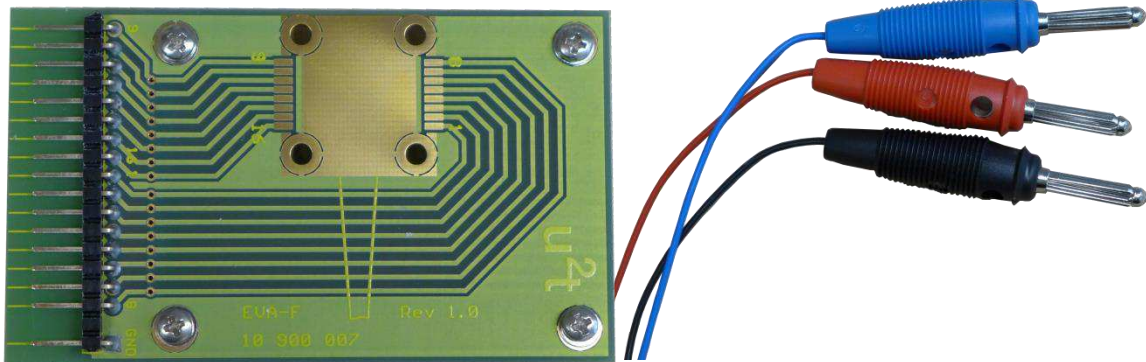
Address: A1208, Overseas Decoration Building, #122 Zhenhua RD., Futian, Shenzhen, China



## Product Specification

### Evaluation Kit for Integrated Coherent Detector

#### Eva-Kit XPRV



#### PRODUCT FEATURES

- Evaluation kit for laboratory testing of XPRV modules
- PCB board for mechanical mounting of XPRV modules
- Banana plugs for laboratory access of XPRV DC control lines

#### APPLICATIONS

- Product evaluation
- Laboratory test systems
- Interface board and DC control cable for optical frontend

The evaluation kit consists of a PCB for mechanical mounting of XPRV modules and a DC connector cable. The PCB is designed to directly access the RF connector of the module package. DC control is enabled via banana connectors. The kit enables easy electrical access and full control of XPRV modules.

#### ORDERING INFORMATION

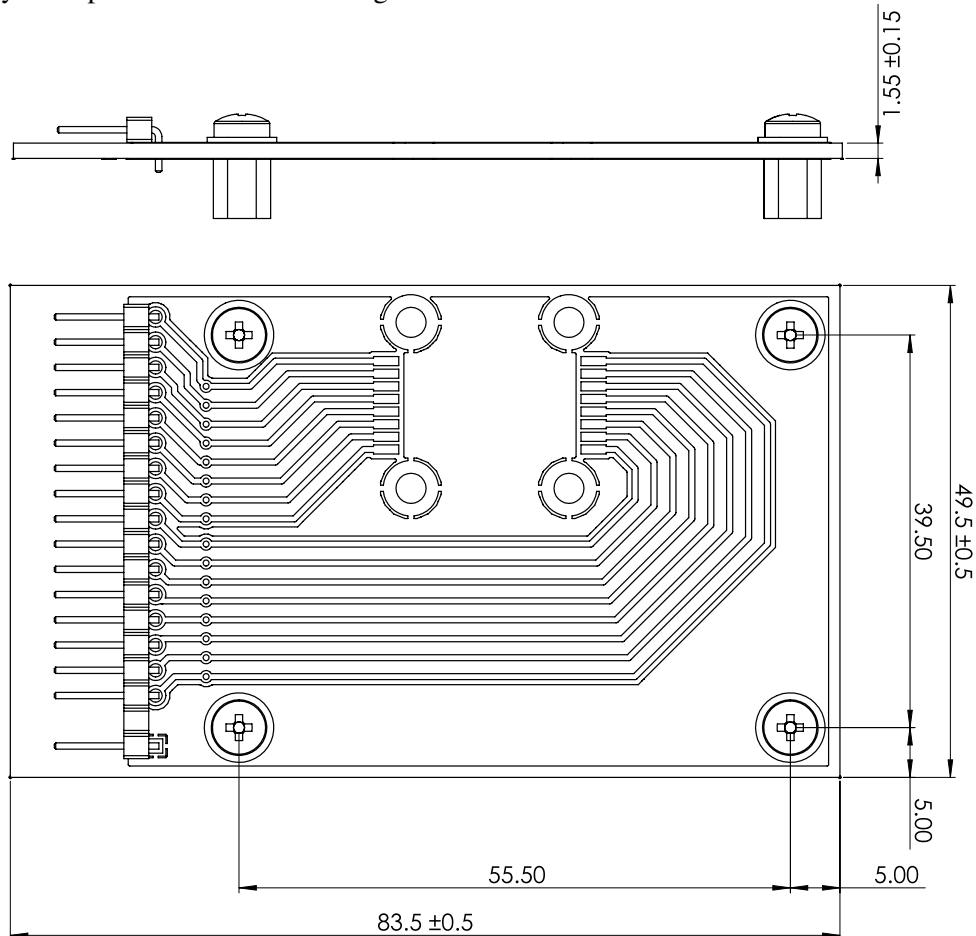
**Eva-Kit XPRV**

Eva-Kit XPRV is consisting of:

- **Eva-XPRV PCB board**
- **Eva-Cable-Set XPRV**

## I. Evaluation Board

The PCB evaluation board is designed for mechanical mounting of XPRV modules. Electrical connection to the module is obtained via Ni/Au finished electrical pads. Care needs to be taken for precise alignment of the package electrical leads to the pads on board. Slight bending of leads for increased spring load is suggested. The module can be fixed by 4 screws. The board is equipped with a keyed 17 pin header for connecting the DC cable.



**Figure 1: PCB Layout (dimensions in mm)**

- Single-layer PCB
- 1.5 mm thickness
- Material: FR4
- 35  $\mu\text{m}$  Cu
- Ni/Au finish

## II. DC Cable

The DC cable provides access to the DC pins of the XPRV module via banana plugs. Connection to the evaluation board is obtained by a 17 leads keyed connector. Each cable is labeled near the banana plug with the function of the module pin it is connected to.



**III. Revision History**

<b>Revision</b>	<b>Date</b>	<b>Description</b>
A1	01/30/2015	<ul style="list-style-type: none"><li>• Document created.</li></ul>

**Notes**

- Any trademarks used in this document are properties of their respective owners.
- Finisar Corporation reserves the right to make changes without notice.

**For More Information**

Finisar Corporation  
1389 Moffett Park Drive  
Sunnyvale, CA 94089-1133  
Tel. 1-408-548-1000  
Fax 1-408-541-6138  
[sales@finisar.com](mailto:sales@finisar.com)  
[www.finisar.com](http://www.finisar.com)