



Chipsmall Limited consists of a professional team with an average of over 10 year of expertise in the distribution of electronic components. Based in Hongkong, we have already established firm and mutual-benefit business relationships with customers from,Europe,America and south Asia,supplying obsolete and hard-to-find components to meet their specific needs.

With the principle of “Quality Parts,Customers Priority,Honest Operation,and Considerate Service”,our business mainly focus on the distribution of electronic components. Line cards we deal with include Microchip,ALPS,ROHM,Xilinx,Pulse,ON,Everlight and Freescale. Main products comprise IC,Modules,Potentiometer,IC Socket,Relay,Connector.Our parts cover such applications as commercial,industrial, and automotives areas.

We are looking forward to setting up business relationship with you and hope to provide you with the best service and solution. Let us make a better world for our industry!



Contact us

Tel: +86-755-8981 8866 Fax: +86-755-8427 6832

Email & Skype: info@chipsmall.com Web: www.chipsmall.com

Address: A1208, Overseas Decoration Building, #122 Zhenhua RD., Futian, Shenzhen, China



Evaluation Board for the **AD5160** Digital Potentiometer

FEATURES

- Full featured evaluation board used in conjunction with low voltage digiPOT motherboard (EVAL-MB-LV-SDZ)
- Multiple test circuits
- Multiple ac/dc input signals
- PC control via a separately purchased system demonstration platform (SDP-B or SDP-S)
- PC software for control

EVALUATION KIT CONTENTS

- EVAL-AD5160DBZ** evaluation board
- EVAL-MB-LV-SDZ** motherboard
- CD that includes
 - Self-installing software that allows users to control the board and exercise all functions of the device
 - Electronic version of the **AD5160** data sheet
 - Electronic version of the **EVAL-AD5160DBZ** user guide

GENERAL DESCRIPTION

This user guide describes the evaluation boards for evaluating the **AD5160**, a 256-position SPI-/I²C-selectable digital potentiometer.

The **AD5160** supports single-supply 2.7 V to 5.5 V operation, making the device suitable for battery-powered applications and many applications requiring superior low temperature coefficient performance.

In addition, the **AD5160** uses an SPI-compatible digital interface to vary the wiper setting. The resistance between the wiper and either end point of the fixed resistor varies linearly with respect to the digital code transferred into the RDAC latch.

The **EVAL-AD5160DBZ** daughter board and the EVAL-MB-LV-SDZ motherboard can operate in single-supply mode and incorporate an internal power supply from the USB.

Complete specifications for the **AD5160** can be found in the **AD5160** data sheet, which is available from www.analog.com and should be consulted in conjunction with this user guide when using the evaluation board.

PHOTOGRAPH OF **EVAL-AD5160DBZ** WITH MOTHERBOARD AND SDP-B

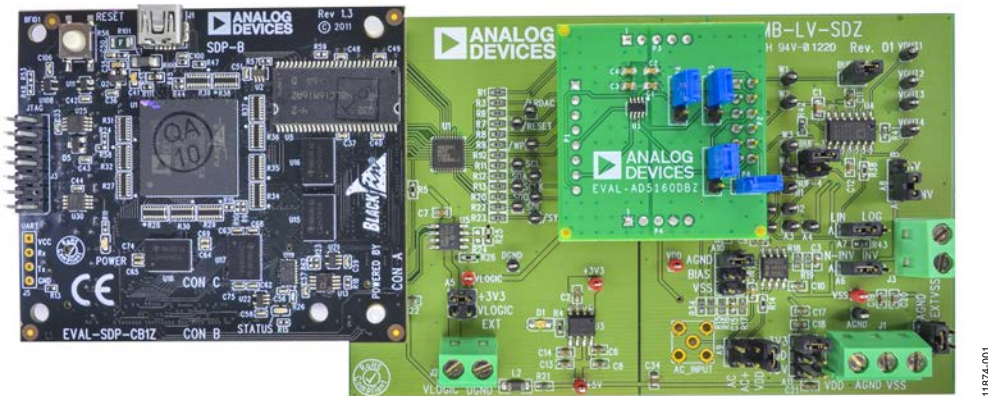


Figure 1. Digital Picture of Evaluation Board with Low Voltage DigiPOT Motherboard and System Demonstration Platform

TABLE OF CONTENTS

Features	1	Evaluation Board Software	6
Evaluation Kit Contents.....	1	Installing the Software	6
General Description	1	Running the Software	6
Photograph of EVAL-AD5160DBZ with Motherboard and SDP-B.....	1	Operating the Software.....	7
Revision History	2	Evaluation Board Schematics and Artwork	8
Evaluation Board Hardware	3	Motherboard	8
Power Supplies	3	Daughter Board	12
Test Circuits.....	4	Bill of Materials.....	14

REVISION HISTORY

11/13—Revision 0: Initial Version

EVALUATION BOARD HARDWARE

POWER SUPPLIES

The EVAL-MB-LV-SDZ supports using single power supplies.

The evaluation board can be powered either from the SDP port or externally by the J1 and J2 connectors, as described in Table 1.

All supplies are decoupled to ground using 10 μ F and 0.1 μ F ceramic capacitors.

Table 1. Connector Functions

Connector No.	Label	Description	Voltage	
			Min	Max
J1-1	VDD	Analog positive power supply, V_{DD}	2.7 V	5.5 V
J1-2	AGND	Analog ground		
J2-1	VLOGIC	Digital supply	2.7 V	V_{DD}
J2-2	DGND	Digital ground		

Table 2. Link Functions

Link No.	Power Supply	Options	Default Position
A5	V_{LOGIC}	This link selects one of the following as the digital supply: 3.3 V (from the SDP board). $V_{LOGIC EXT}$ (external supply from the J2 connector).	3.3 V
A11	V_{DD}	This link selects one of the following as the positive power supply: 5 V (from the SDP board). 3.3 V (from the SDP board). V_{DD} (external supply from the J1 connector).	3.3 V
A12	GND	AGND.	AGND

Link Options

Several link and switch options are incorporated on the EVAL-MB-LV-SDZ and EVAL-AD5160DBZ boards and must be set up before using the evaluation system. The functions of these link options are described in detail in Table 2 through Table 5. By default, the evaluation system is set up to be controlled by a PC via the SDP board.

TEST CIRCUITS

The EVAL-AD5160DBZ and EVAL-MB-LV-SDZ incorporate several test circuits to evaluate the performance of the AD5160.

DAC

The RDAC can be operated as a digital-to-analog converter (DAC), as shown in Figure 2.

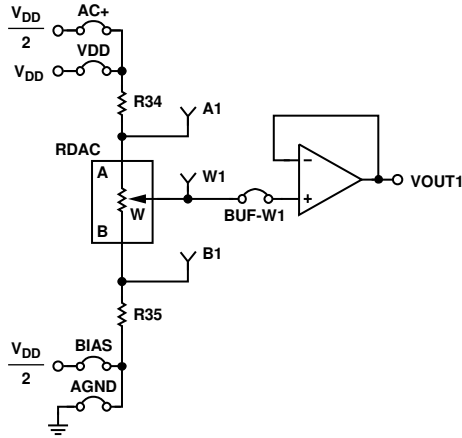


Figure 2. DAC

Table 4 shows the options available for the voltage references.

The output voltage is defined in Equation 1.

$$V_{OUT} = (V_A - V_B) \times \frac{RDAC}{256} \tag{1}$$

where:

RDAC is the code loaded in the RDAC register.

V_A is the voltage applied to the A terminal (A9 link).

V_B is the voltage applied to the B terminal (A10 link).

However, by using the R34 and R35 external resistors, you can reduce the voltage of the voltage references. In this case, use the A1 and B1 test points to measure the voltage applied to the A and B terminals and recalculate V_A and V_B in Equation 1.

AC Signal Attenuation

The RDAC can be used to attenuate an ac signal, which must be provided externally using the AC_INPUT connector, as shown in Figure 3.

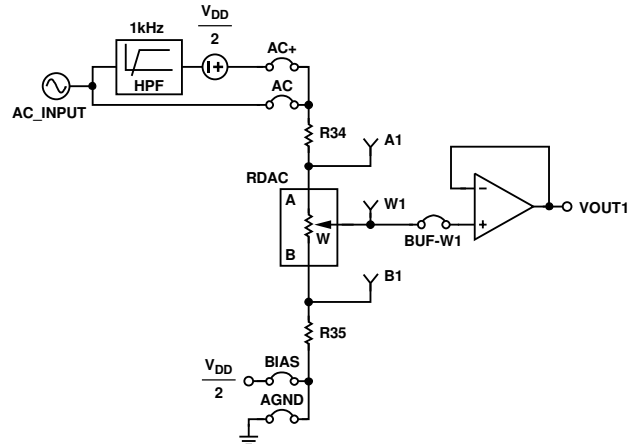


Figure 3. AC Signal Attenuator

Depending on the voltage supply rails and the dc offset voltage of the ac signal, various configurations can be used, as described in Table 3.

Table 3. AC Signal Attenuation Link Options

Link	Options	Conditions
A9	AC+	No dc offset voltage. AC signal is outside the voltage supply rails due to the dc offset voltage. DC offset voltage ≠ V _{DD} /2. ¹
	AC	All other conditions.
A10	BIAS AGND	Use in conjunction with AC+ link. ¹ All other conditions.

¹ Recommended to ensure optimal total harmonic distortion (THD) performance.

The signal attenuation is defined in Equation 2.

$$Attenuation \text{ (dB)} = 20 \times \log \left(\frac{R_{WB} + R_W}{R_{END-TO-END}} \right) \tag{2}$$

where:

R_{WB} is the resistance between the W and B terminals.

R_W is the wiper resistance.

R_{END-TO-END} is the end-to-end resistance value.

Table 4. DAC Voltage References

Terminal	Link Settings		Description
	Daughter Board	Motherboard	
A1	P5: A1 position	A9: AC+ position A9: VDD position	Connects Terminal A1 to V _{DD} /2 Connects Terminal A1 to V _{DD}
W1	P6: W1 position	BUF-W1: inserted	Connects Terminal W1 to an output buffer
B1	P7: B1 position	A10: BIAS position A10: AGND position	Connects Terminal B1 to V _{DD} /2 Connects Terminal B1 to analog ground
	P8: inserted		Closes the feedback loop of the second op amp in the AD8618

Signal Amplifier

The RDAC can be operated as an inverting or noninverting signal amplifier and can support linear or pseudologarithmic gain. Table 5 shows the available configurations.

The noninverting amplifier with linear gain is shown in Figure 4, and the gain is defined in Equation 3.

$$G = 1 + \frac{R_{WB}}{R38} \tag{3}$$

where R_{WB} is the resistance between the W and B terminals.

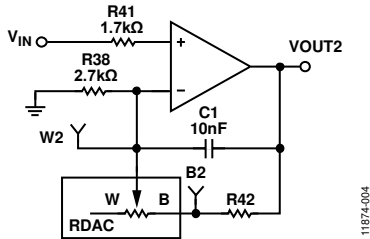


Figure 4. Noninverting Amplifier with Linear Gain

The noninverting amplifier with pseudologarithmic gain is shown in Figure 5, and the gain is defined in Equation 4.

$$G = 1 + \frac{R_{WB}}{R_{AW}} \tag{4}$$

where:

R_{WB} is the resistance between the W and B terminals.

R_{AW} is the resistance between the A and W terminals.

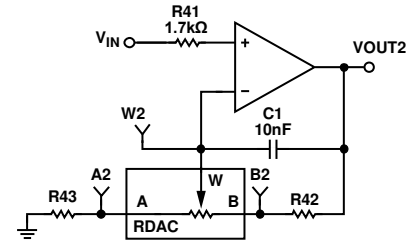


Figure 5. Noninverting Amplifier with Pseudologarithmic Gain

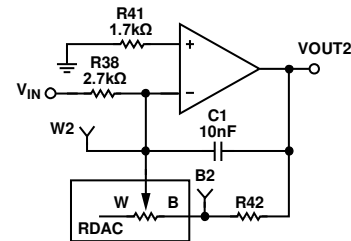
R43 and R42 can be used to set the maximum and minimum gain limits.

The inverting amplifier with linear gain is shown in Figure 6, and the gain is defined in Equation 5.

$$G = -\frac{R_{WB}}{R38} \tag{5}$$

where R_{WB} is the resistor between the W and B terminals.

Note that the input signal, V_{IN} , must be negative.



NOTES
1. THE INPUT SIGNAL, V_{IN} , MUST BE NEGATIVE.

Figure 6. Inverting Amplifier with Linear Gain

Table 5. Amplifier Selection Link Settings

Amplifier	Gain	Link Settings		V_{IN} Range
		Daughter Board	Motherboard	
Noninverting	Linear	P5: A2 position, P6: W2 position, P7: B2 position, P8: not inserted	A7: LIN position, A6: N-INV position, A8: N-INV position	0 V to V_{DD}
	Pseudologarithmic	P5: A2 position, P6: W2 position, P7: B2 position, P8: not inserted	A7: LOG position, A6: N-INV position, A8: N-INV position	0 V to V_{DD}
Inverting	Linear	P5: A2 position, P6: W2 position, P7: B2 position, P8: not inserted	A7: LIN position, A6: INV position, A8: INV position	$-V_{DD}$ to 0 V

EVALUATION BOARD SOFTWARE

INSTALLING THE SOFTWARE

The [EVAL-AD5160DBZ](#) kit includes evaluation board software provided on a CD. The software is compatible with Windows® XP, Windows Vista, and Windows 7 (both 32-bit and 64-bit versions).

Install the software before connecting the [SDP board](#) to the USB port of the PC to ensure that the SDP board is recognized when it is connected to the PC.

1. Start the Windows operating system and insert the CD.
2. The installation software opens automatically. If it does not, run the **setup.exe** file from the CD.
3. After the installation is complete, power up the evaluation board as described in the Power Supplies section.
4. Connect the [EVAL-AD5160DBZ](#) and EVAL-MB-LV-SDZ to the SDP board and the SDP board to the PC.
5. When the software detects the evaluation board, follow the instructions that appear to finalize the installation.

RUNNING THE SOFTWARE

To run the program, do the following:

1. Click **Start > All Programs > Analog Devices > AD5160 > AD5160 Eval Board**. (To uninstall the program, click **Start > Control Panel > Add or Remove Programs > AD5160 Eval Board**.)

2. If the SDP board is not connected to the USB port when the software is launched, a connectivity error displays (see Figure 7). If a connectivity error is displayed, connect the evaluation board to the USB port of the PC and wait a few seconds, and then click **Rescan** and follow the instructions that appear on-screen.

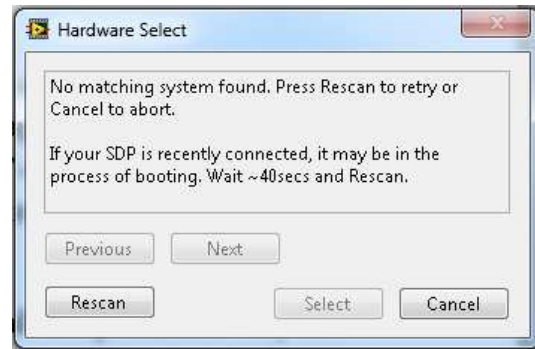


Figure 7. Pop-Up Window Error

The main window of the [EVAL-AD5160DBZ](#) software then opens, as shown in Figure 8.

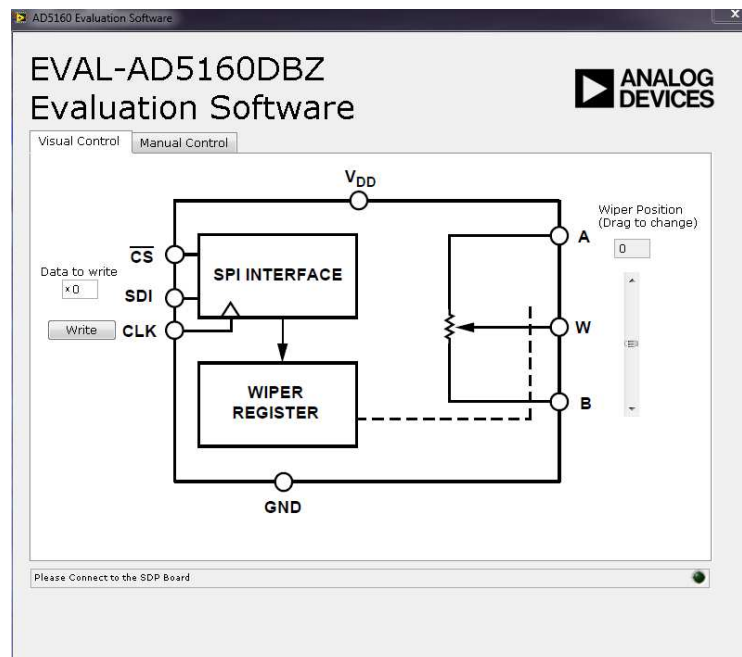


Figure 8. [EVAL-AD5160DBZ](#) Software Main Window, Visual Control Tab

OPERATING THE SOFTWARE

The main window of the EVAL-AD5160DBZ software is divided into two tabs: **Visual Control** and **Manual Control**.

Visual Control Tab

The **Visual Control** tab, as shown in Figure 8, contains a block diagram that allows inputting data in hexadecimal format in the **Data to write** box. Click **Write** to write the data to the device register. A slider control, located on the right side of the window, allows changing the wiper setting.

Manual Control Tab

The **Manual Control** tab, as shown in Figure 9, allows customizing an SPI data-word by manually switching each serial data-word (D7 to D0) from 0 to 1 or from 1 to 0, as desired, and then clicking **Write**.

The **Data Written** box shows the value that is written to the evaluation board. It is set using the **D0** to **D7** sliders in the **Serial Data Word** section.

Exiting the window closes the program.

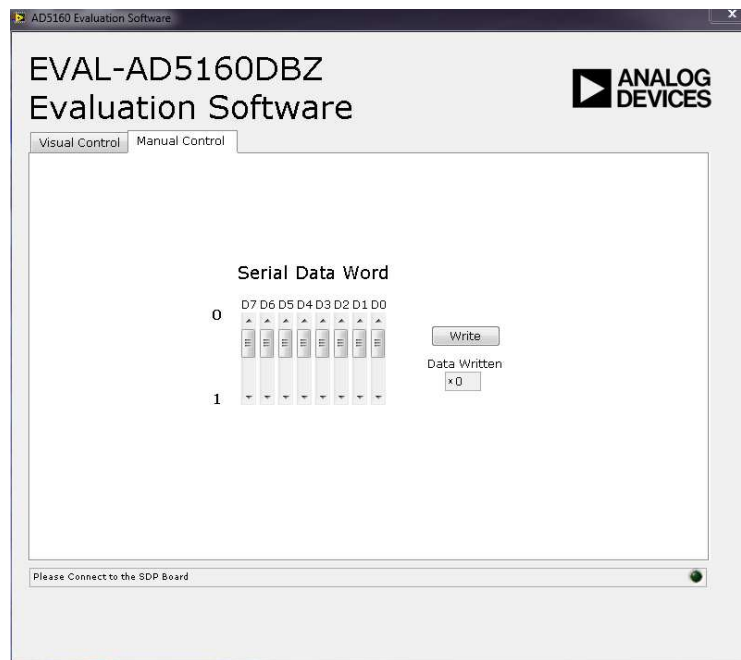


Figure 9. EVAL-AD5160DBZ Software Main Window, Manual Control Tab

11874-009

EVALUATION BOARD SCHEMATICS AND ARTWORK

MOTHERBOARD

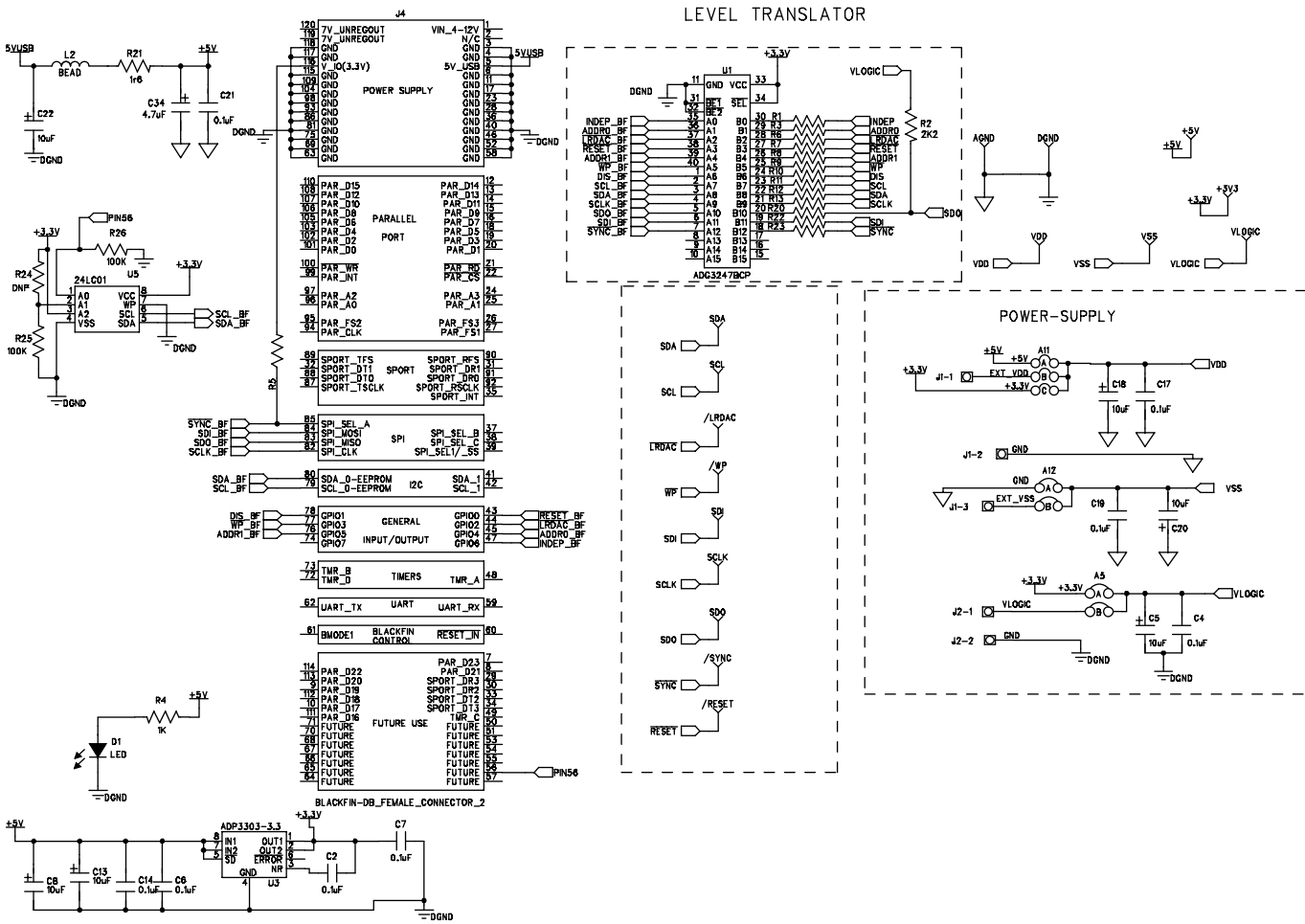
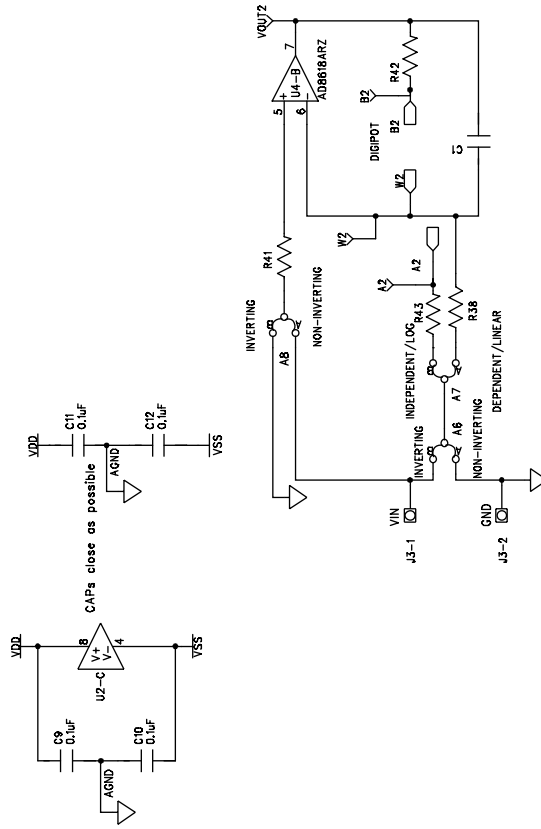
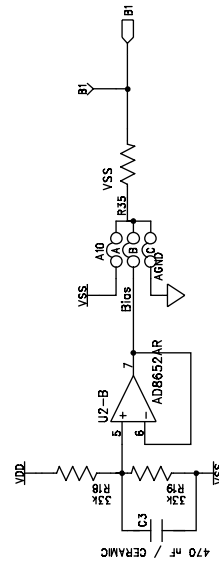
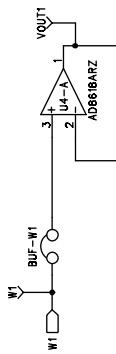
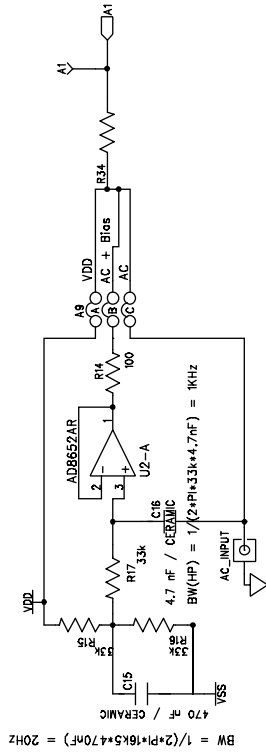
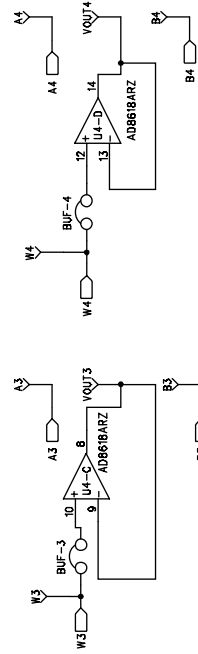


Figure 10. SDP Connector and Power Supply

DAC + FLOATING DAC + BW



INVERTING AND NON-INVERTING WITH LINEAR AND PSEUDO-LOG GAIN



11874-011

Figure 11. Schematic of Test Circuits

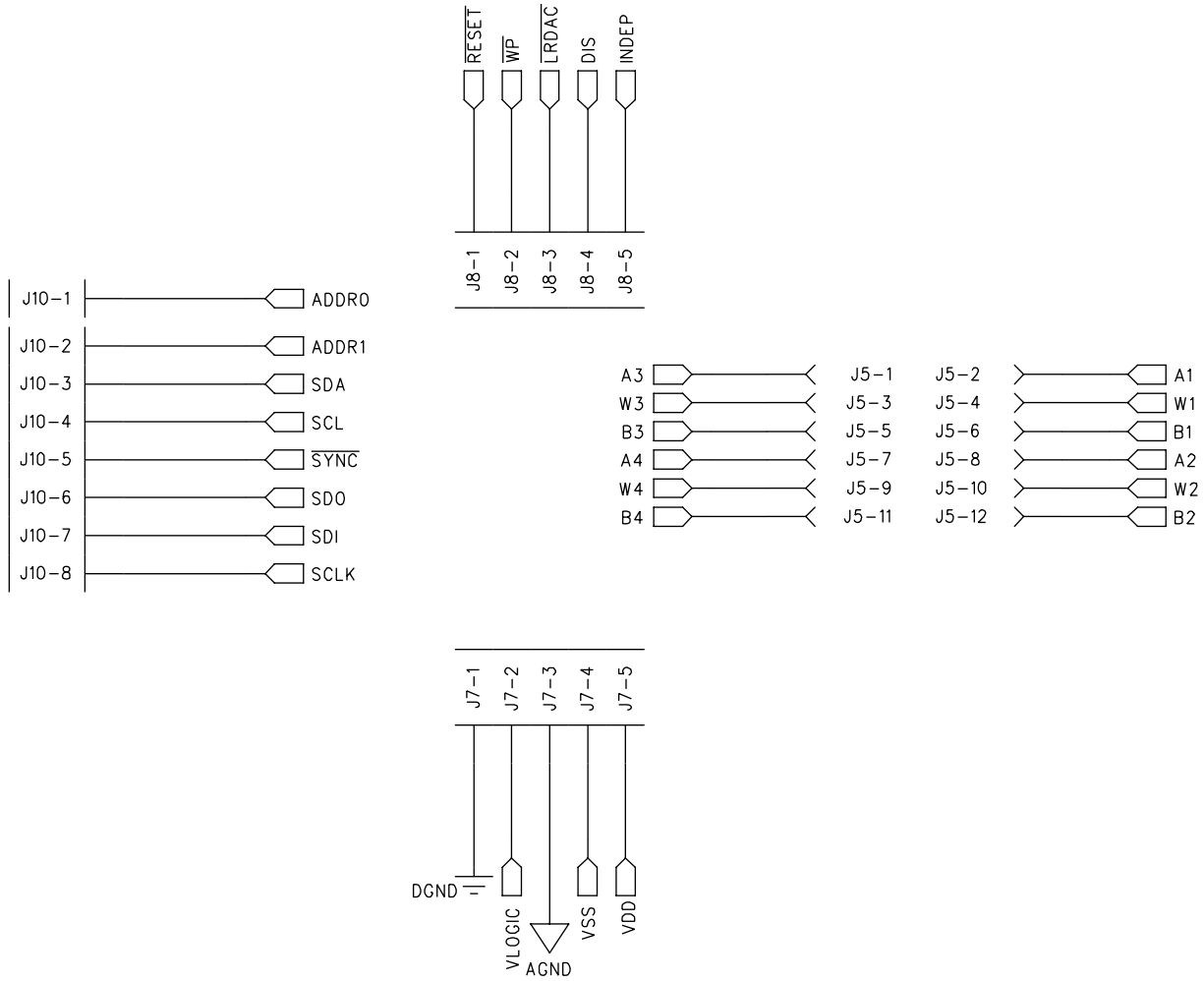


Figure 12. Schematic of Connectors to Daughter Board

11874-012

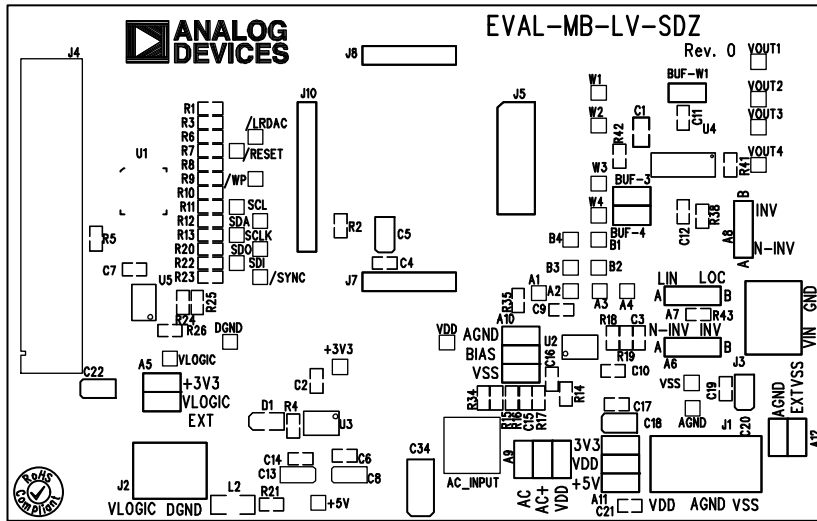


Figure 13. Component Side View

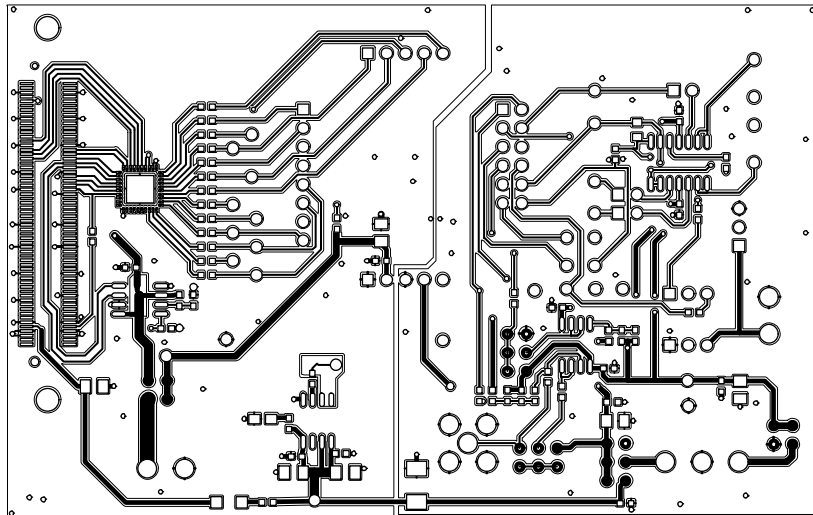


Figure 14. Component Placement Drawing

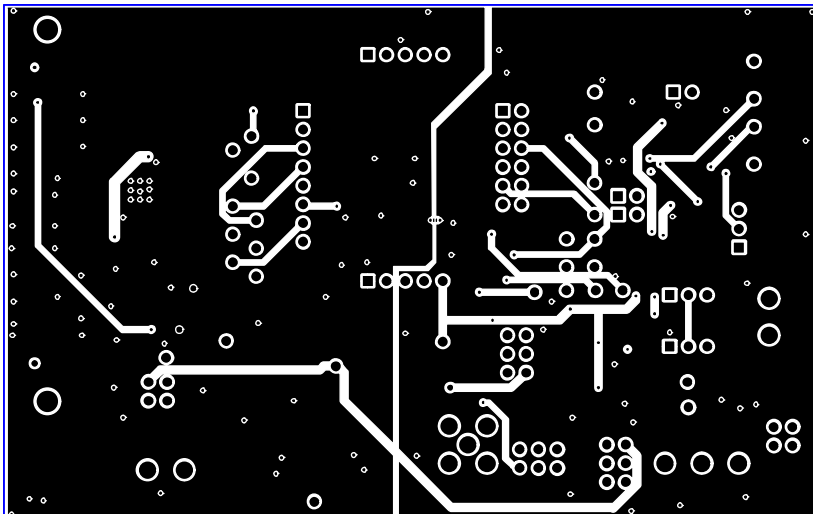


Figure 15. Layer 2 Side PCB Drawing

DAUGHTER BOARD

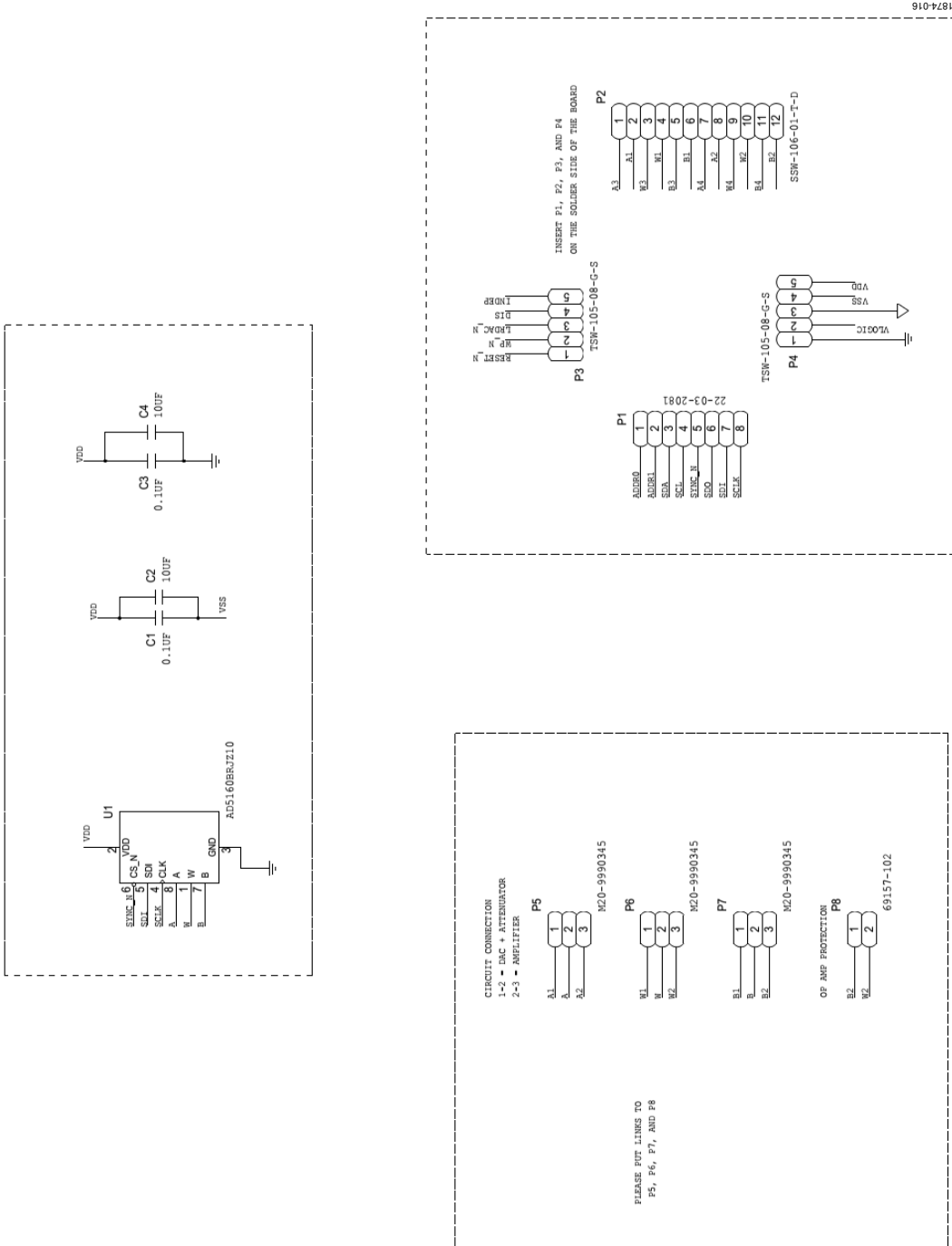


Figure 16. Schematic of Daughter Board

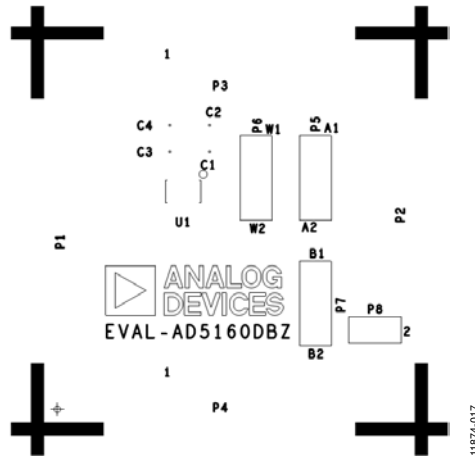


Figure 17. Component Side View

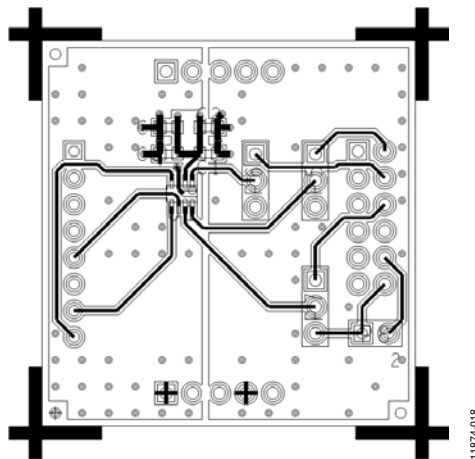


Figure 18. Component Placement Drawing

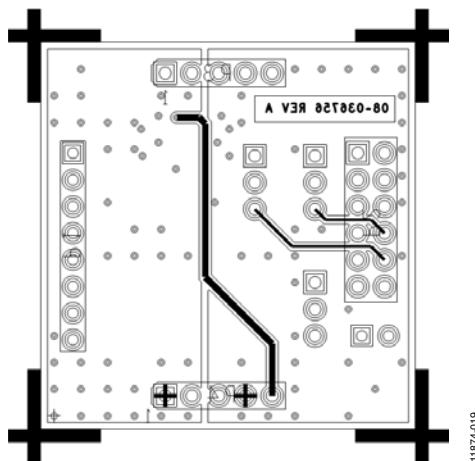


Figure 19. Layer 2 Side PCB Drawing

BILL OF MATERIALS

Table 6. Motherboard Bill of Materials

Qty	Reference Designator	Description	Supplier ¹ /Part Number
3	BUF-3, BUF-4, BUF-W1	2-pin (0.1" pitch) header and shorting shunt	FEC 1022247 and FEC 150411
3	A6, A7, A8	3-pin SIL header and shorting link	FEC 1022248 and FEC 150410
5	A5, A9, A10, A11, A12	6-pin (3 × 2), 0.1" header and shorting block	FEC 148535 and FEC 150411 (36-pin strip)
1	J1	3-pin terminal block (5 mm pitch)	FEC 151790
2	J7, J8	4-pin SIL header	FEC 1098035
1	J4	Receptacle, 0.6 mm, 120-way	Digi-Key H1219-ND
1	J10	8-pin inline header; 100 mil centers	FEC 1098038
1	J5	12-pin (2 × 6), 0.1" pitch header	FEC 1098051
2	J2, J3	2-pin terminal block (5 mm pitch)	FEC 151789
17	R1, R3, R6, R7, R8, R9, R10, R11, R12, R13, R20, R22, R23, R34, R35, R42, R43	SMD resistor, 0 Ω, 0.01, 0603	FEC 9331662
1	R2	SMD resistor, 2.2 kΩ, 0.01, 0603	FEC 1750676
1	R41	SMD resistor, 1.7 kΩ, 1%, 0603	FEC 1170811
1	R21	Resistor, surge, 1.6 Ω, 1%, 0603	FEC 1627674
1	R38	SMD resistor, 2.7 kΩ, 1%, 0603	FEC 1750678
1	R14	SMD resistor, 100 Ω, 1%, 0603	FEC 9330364
1	R4	SMD resistor, 1 kΩ, 0.01, 0603	FEC 9330380
3	R5, R25, R26	SMD resistor, 100 kΩ, 1%, 0603	FEC 9330402
5	R15, R16, R17, R18, R19	SMD resistor, 33 kΩ, 1%, 0603	FEC 9331034
1	C1	SMD capacitor, 100 nF, 10%, 0805	FEC 1650863
8	C4, C9, C10, C11, C12, C17, C19, C21	SMD capacitor, 0.1 μF, ±10%, 0603	FEC 1759122
4	C2, C6, C7, C14	SMD capacitor, 0.1 μF, ±10%, 0603	FEC 3019482
2	C8, C13	SMD capacitor, 10 μF, ±10%	FEC 197130
4	C18, C20, C22, C5	Capacitor, 10 μF, ±20%	FEC 1190107
2	C3, C15	Capacitor, 470 nF, ±10%, 0603	FEC 1414037
1	C16	Capacitor, 4.7 nF, ±10%, 0603	FEC 1414642
1	C34	Capacitor, 4.7 nF, ±20%	FEC 1432350
1	L2	Inductor, SMD, 600Z	FEC 9526862
1	D1	Green SMD LED	FEC 5790852
1	U1	Two-port level translating bus switch	ADG3247BCPZ
1	U2	Dual op amp	AD8652ARZ
1	U3	Precision low dropout voltage regulator	ADP3303ARZ-3.3
1	U4	Operational amplifier	AD8618ARZ
1	U5	I ² C serial EEPROM, 64k, 2.5 V, MSOP-8	FEC 1331335
18	LRDAC, RESET, SYNC, WP, A1, A2, A3, A4, AGND, B1, VOUT_C1, VOUT_C2, VOUT3, VOUT4, W1, W2, W3, W4	Terminal, PCB, black, PK100, test point	FEC 8731128
5	+3.3V, +5V, EXT_VDD, VLOGIC, EXT_VSS	Terminal, PCB, red, PK100	FEC 8731144

¹ FEC refers to Farnell Electronic Component Distributors; Digi-Key refers to Digi-Key Corporation.

Table 7. Daughter Board Bill of Materials

Qty	Reference Designator	Description	Supplier ¹ /Part Number
1	U1	256-position digital potentiometer	AD5160BRJZ10
1	P8	2-pin (0.1" pitch) header and shorting shunt	FEC 1022247 and FEC 150411
5	P5, P6, P7, P9, P10	3-pin SIL header and shorting link	FEC 1022248 and FEC 150410
2	C2, C4	6.3 V, X5R, ceramic capacitor, 10 μF, ±20%	GRM188R60J106ME47D
2	C1, C3	50 V, X7R, ceramic capacitor, 0.1 μF, ±10%	GRM188R71H104KA93D
1	P1	Header, 2.54 mm, PCB, 1 × 8-way	FEC 1766172
1	P2	12-pin (2 × 6), 0.1" pitch header	FEC 1804099
2	P3, P4	5-pin SIL header	FEC 1929016

¹ FEC refers to Farnell Electronic Component Distributors.

NOTES

**ESD Caution**

ESD (electrostatic discharge) sensitive device. Charged devices and circuit boards can discharge without detection. Although this product features patented or proprietary protection circuitry, damage may occur on devices subjected to high energy ESD. Therefore, proper ESD precautions should be taken to avoid performance degradation or loss of functionality.

Legal Terms and Conditions

By using the evaluation board discussed herein (together with any tools, components documentation or support materials, the "Evaluation Board"), you are agreeing to be bound by the terms and conditions set forth below ("Agreement") unless you have purchased the Evaluation Board, in which case the Analog Devices Standard Terms and Conditions of Sale shall govern. Do not use the Evaluation Board until you have read and agreed to the Agreement. Your use of the Evaluation Board shall signify your acceptance of the Agreement. This Agreement is made by and between you ("Customer") and Analog Devices, Inc. ("ADI"), with its principal place of business at One Technology Way, Norwood, MA 02062, USA. Subject to the terms and conditions of the Agreement, ADI hereby grants to Customer a free, limited, personal, temporary, non-exclusive, non-sublicensable, non-transferable license to use the Evaluation Board FOR EVALUATION PURPOSES ONLY. Customer understands and agrees that the Evaluation Board is provided for the sole and exclusive purpose referenced above, and agrees not to use the Evaluation Board for any other purpose. Furthermore, the license granted is expressly made subject to the following additional limitations: Customer shall not (i) rent, lease, display, sell, transfer, assign, sublicense, or distribute the Evaluation Board; and (ii) permit any Third Party to access the Evaluation Board. As used herein, the term "Third Party" includes any entity other than ADI, Customer, their employees, affiliates and in-house consultants. The Evaluation Board is NOT sold to Customer; all rights not expressly granted herein, including ownership of the Evaluation Board, are reserved by ADI. CONFIDENTIALITY. This Agreement and the Evaluation Board shall all be considered the confidential and proprietary information of ADI. Customer may not disclose or transfer any portion of the Evaluation Board to any other party for any reason. Upon discontinuation of use of the Evaluation Board or termination of this Agreement, Customer agrees to promptly return the Evaluation Board to ADI. ADDITIONAL RESTRICTIONS. Customer may not disassemble, decompile or reverse engineer chips on the Evaluation Board. Customer shall inform ADI of any occurred damages or any modifications or alterations it makes to the Evaluation Board, including but not limited to soldering or any other activity that affects the material content of the Evaluation Board. Modifications to the Evaluation Board must comply with applicable law, including but not limited to the RoHS Directive. TERMINATION. ADI may terminate this Agreement at any time upon giving written notice to Customer. Customer agrees to return to ADI the Evaluation Board at that time. LIMITATION OF LIABILITY. THE EVALUATION BOARD PROVIDED HEREUNDER IS PROVIDED "AS IS" AND ADI MAKES NO WARRANTIES OR REPRESENTATIONS OF ANY KIND WITH RESPECT TO IT. ADI SPECIFICALLY DISCLAIMS ANY REPRESENTATIONS, ENDORSEMENTS, GUARANTEES, OR WARRANTIES, EXPRESS OR IMPLIED, RELATED TO THE EVALUATION BOARD INCLUDING, BUT NOT LIMITED TO, THE IMPLIED WARRANTY OF MERCHANTABILITY, TITLE, FITNESS FOR A PARTICULAR PURPOSE OR NON-INFRINGEMENT OF INTELLECTUAL PROPERTY RIGHTS. IN NO EVENT WILL ADI AND ITS LICENSORS BE LIABLE FOR ANY INCIDENTAL, SPECIAL, INDIRECT, OR CONSEQUENTIAL DAMAGES RESULTING FROM CUSTOMER'S POSSESSION OR USE OF THE EVALUATION BOARD, INCLUDING BUT NOT LIMITED TO LOST PROFITS, DELAY COSTS, LABOR COSTS OR LOSS OF GOODWILL. ADI'S TOTAL LIABILITY FROM ANY AND ALL CAUSES SHALL BE LIMITED TO THE AMOUNT OF ONE HUNDRED US DOLLARS (\$100.00). EXPORT. Customer agrees that it will not directly or indirectly export the Evaluation Board to another country, and that it will comply with all applicable United States federal laws and regulations relating to exports. GOVERNING LAW. This Agreement shall be governed by and construed in accordance with the substantive laws of the Commonwealth of Massachusetts (excluding conflict of law rules). Any legal action regarding this Agreement will be heard in the state or federal courts having jurisdiction in Suffolk County, Massachusetts, and Customer hereby submits to the personal jurisdiction and venue of such courts. The United Nations Convention on Contracts for the International Sale of Goods shall not apply to this Agreement and is expressly disclaimed.