



Chipsmall Limited consists of a professional team with an average of over 10 year of expertise in the distribution of electronic components. Based in Hongkong, we have already established firm and mutual-benefit business relationships with customers from,Europe,America and south Asia,supplying obsolete and hard-to-find components to meet their specific needs.

With the principle of “Quality Parts,Customers Priority,Honest Operation,and Considerate Service”,our business mainly focus on the distribution of electronic components. Line cards we deal with include Microchip,ALPS,ROHM,Xilinx,Pulse,ON,Everlight and Freescale. Main products comprise IC,Modules,Potentiometer,IC Socket,Relay,Connector.Our parts cover such applications as commercial,industrial, and automotives areas.

We are looking forward to setting up business relationship with you and hope to provide you with the best service and solution. Let us make a better world for our industry!



## Contact us

Tel: +86-755-8981 8866 Fax: +86-755-8427 6832

Email & Skype: [info@chipsmall.com](mailto:info@chipsmall.com) Web: [www.chipsmall.com](http://www.chipsmall.com)

Address: A1208, Overseas Decoration Building, #122 Zhenhua RD., Futian, Shenzhen, China





## COGT350MCQV-03 Evaluation Kit

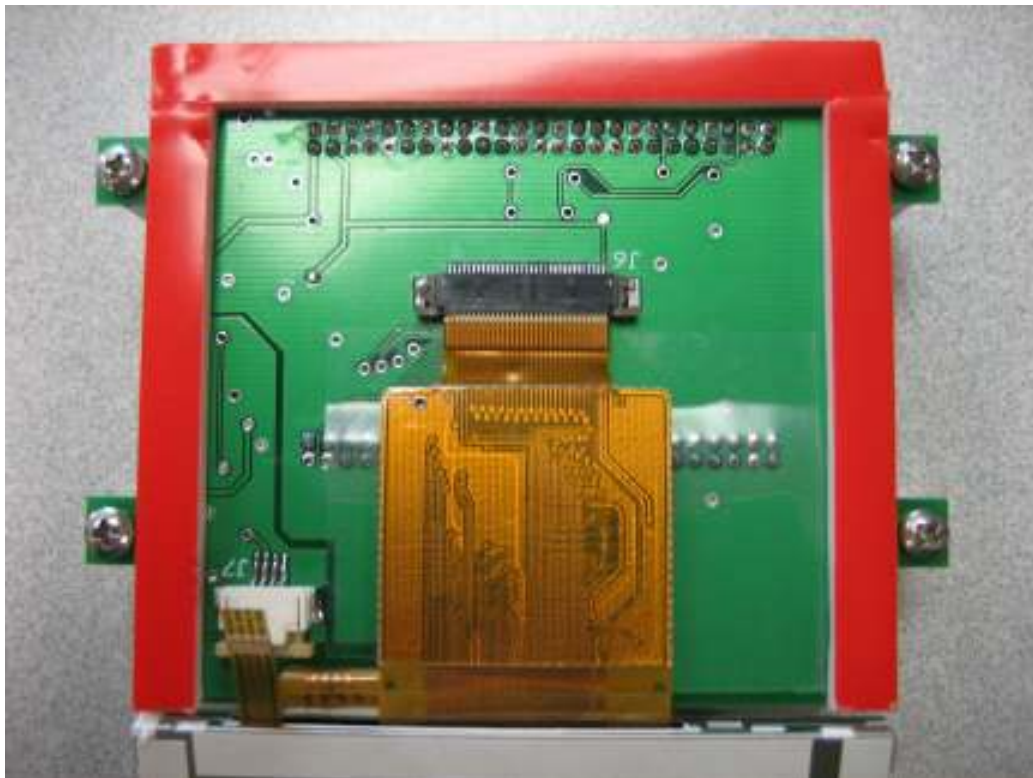
### \*\* Module Assembly Instructions \*\*

#### Part List

Item	Amulet Part Number	Qty	Description
1	3037-0007-01	1	Amulet Controller Board
2	3043-0007-12	1	EVB-12 PCB
3	0950-0001-06	4	Standoff, 4-40, .750, .25 OD
4	0900-0440-05	4	Screw, 4-40, .5"
5	0300-0105	1	Cable, USB Mini
6	7010-0001	1	Stylus
7	UHT-EVK	1	GEMStudio 30 Day Eval CD
8	0309BR-B1K	1	Sale Brochure HMI Solutions
9	0309CC-B1K	1	Sale Brochure Color Chip
10	COG-T350MCQV-03	1	Varitronix 3.5" TFT Display

#### Assembly Instructions

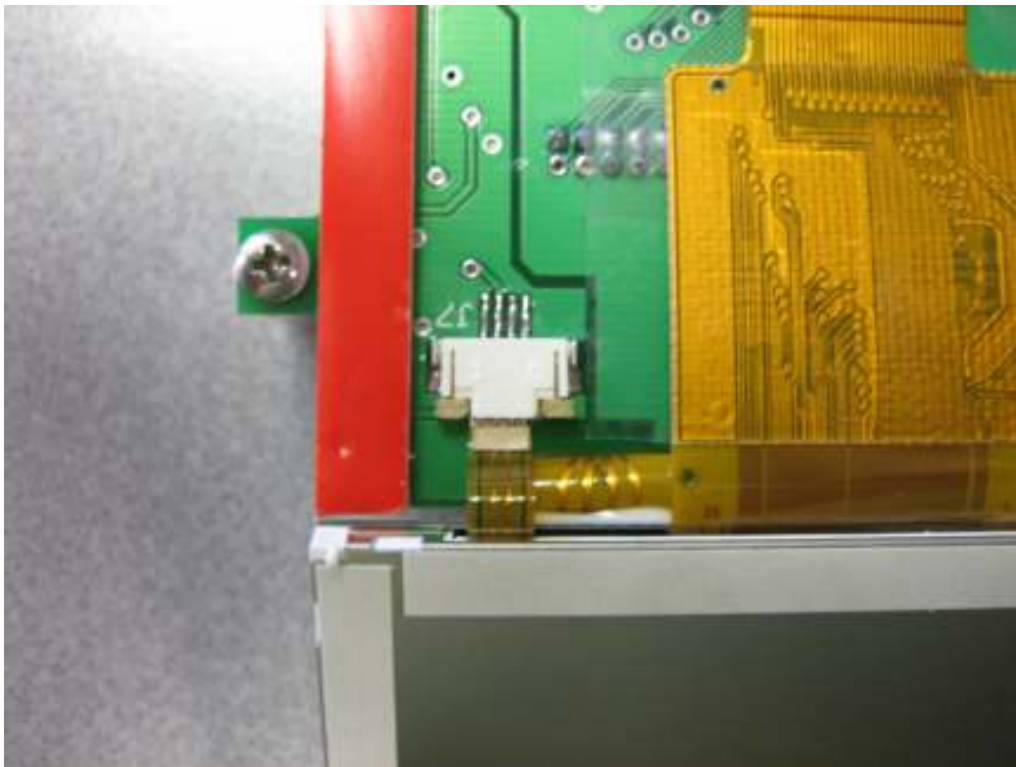
1. Open up the flip-locks on the display, touch panel and, backlight connector on the EVB-12 PCB.
2. Insert the display cable into the Flip-lock connectors. Make sure the cable is not crocked and is in the connector all the way.







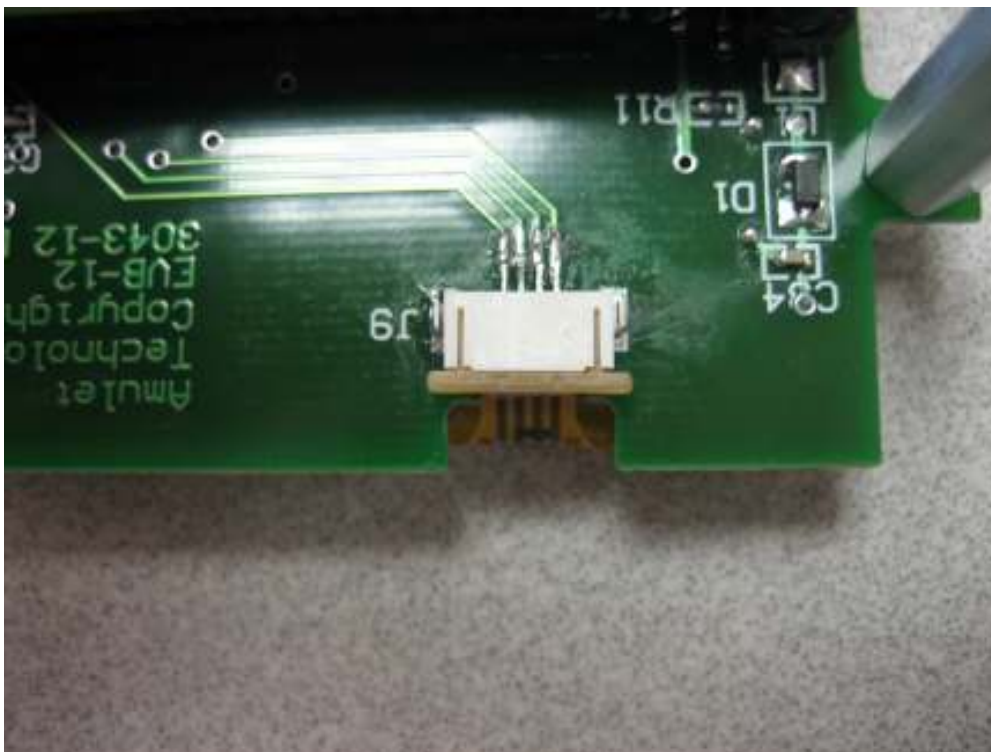
3. Insert the backlight cable into the Flip-lock connectors. Make sure the cable is not crooked and is in the connector all the way.



4. Peel back the double side tape cover.
5. Place the display on top of the double sided tap.
6. Place the display face down on a table and press the assembly together gently.



7. Insert the touch panel cable into the connector.





8. Plug in one end of the USB cable into the computer and the other into the EVB-3 PCB.
9. Confirm the display and touch panel work correctly.  
Note: it takes about 10sec for the display to turn on.
10. If the display does not work check the display connection.

Questions? Email or call Amulet at 1-888-374-8688



Tel (408) 374-4956  
Fax (408) 374-4941  
<http://www.AmuletTechnologies.com>  
[Sales@AmuletTechnologies.com](mailto:Sales@AmuletTechnologies.com)  
[Support@AmuletTechnologies.com](mailto:Support@AmuletTechnologies.com)  
700 Gale Drive, Suite 190  
Campbell, CA 95008 USA

0360-0016  
Rev A 5/11/11