



Chipsmall Limited consists of a professional team with an average of over 10 year of expertise in the distribution of electronic components. Based in Hongkong, we have already established firm and mutual-benefit business relationships with customers from,Europe,America and south Asia,supplying obsolete and hard-to-find components to meet their specific needs.

With the principle of "Quality Parts,Customers Priority,Honest Operation,and Considerate Service",our business mainly focus on the distribution of electronic components. Line cards we deal with include Microchip,ALPS,ROHM,Xilinx,Pulse,ON,Everlight and Freescale. Main products comprise IC,Modules,Potentiometer,IC Socket,Relay,Connector.Our parts cover such applications as commercial,industrial, and automotives areas.

We are looking forward to setting up business relationship with you and hope to provide you with the best service and solution. Let us make a better world for our industry!



Contact us

Tel: +86-755-8981 8866 Fax: +86-755-8427 6832

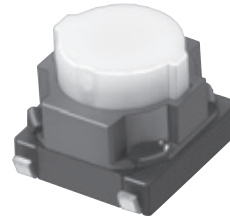
Email & Skype: info@chipsmall.com Web: www.chipsmall.com

Address: A1208, Overseas Decoration Building, #122 Zhenhua RD., Futian, Shenzhen, China



6 mm Square Long Travel SMD Light Touch Switches

Type: **EVQP0/EVQP1/EVQ9P**



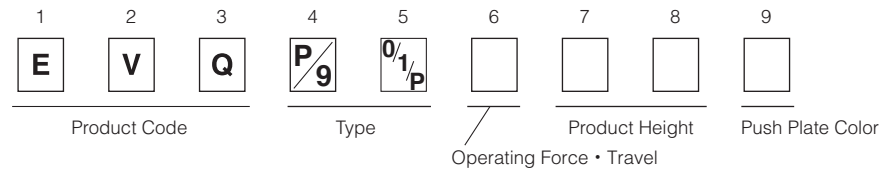
■ Features

- External dimensions : 6.0 mm×6.1 mm, Height 5.0 mm
(Including the push plate)
- Steady and low contact resistance (100 mΩ max.)
- Excellent solderability (J-bent-type terminals)

■ Recommended Applications

- Operating switches for car electronic equipment.
- Input on operating switches for telephones, electronic musical instruments, etc.

■ Explanation of Part Numbers



■ Specifications

| | | | |
|-------------------------------|---------------------------------|------------------------------------------------------------------------------------------------|----------------------------|
| Type | | Snap action/Push-on type SPST | |
| Electrical | Rating | 10 μA 2 V DC to 50 mA 12 V DC (Resistive load) | |
| | Contact Resistance | 100 mΩ max. | |
| | Insulation Resistance | 100 MΩ min. (at 100 V DC) | |
| | Dielectric Withstanding Voltage | 250 V AC for 1 minute | |
| | Bouncing | 10 ms max. (ON, OFF) | |
| Mechanical | Operating Force | 1.6 N±0.5 N, 2.0 N±0.6 N 2.5 N±0.6 N 3.0 N±0.8 N 3.5 N±1.0 N | 2.2 N±0.6 N 2.5 N±0.6 N |
| | Travel | 1.3 mm±0.2 mm | 1.0 mm±0.2 mm |
| Endurance | Operating Life | 3.5 N type: 30,000 cycles min. 1.6 N, 2.0 N, 2.2 N, 2.5 N, 3.0 N types: 100,000 cycles min. | |
| Operating Temperature | | -40 °C to +85 °C | |
| Storage Temperature | | -40 °C to +85 °C (Bulk) -20 °C to +60 °C (Taping) | |
| Minimum Quantity/Packing Unit | | 2,000 pcs. Embossed Taping (Reel Pack) | |
| Quantity/Carton | | 10,000 pcs. | |

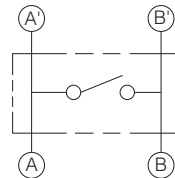
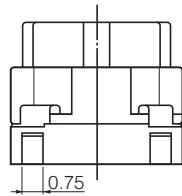
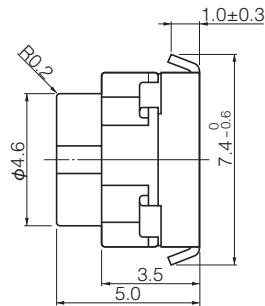
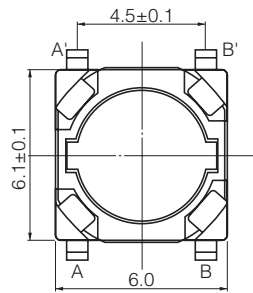
Design and specifications are each subject to change without notice. Ask factory for the current technical specifications before purchase and/or use.
Should a safety concern arise regarding this product, please be sure to contact us immediately.

■ Dimensions in mm (not to scale)

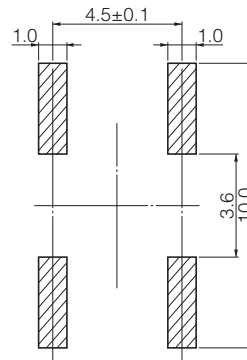
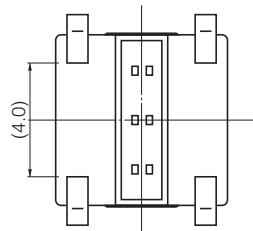
EVQP0
EVQP1
EVQ9P

(Embossed Taping)

General dimension tolerance : ± 0.2
() dimensions are reference dimensions.



Circuit diagram

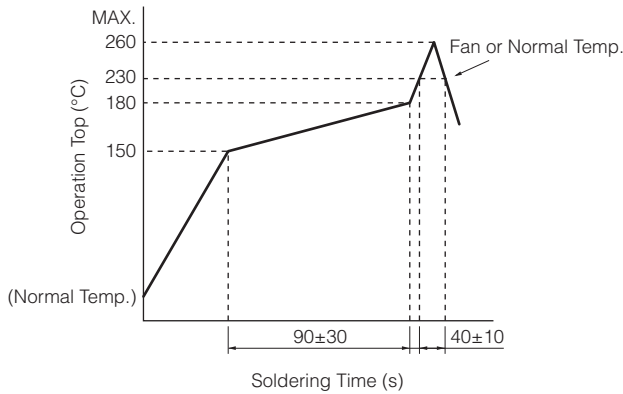


PWB land pattern for reference

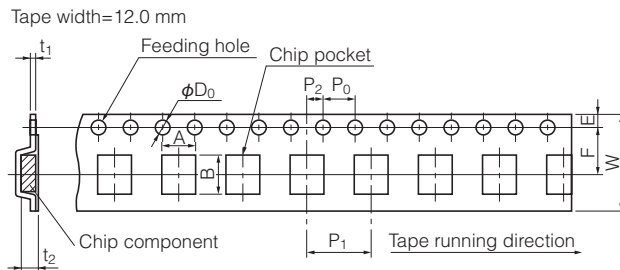
| Part Numbers | Operating Force | Travel | Height | Push Plate Color | Operating Life |
|--------------|-----------------|--------|--------|------------------|----------------|
| EVQP1K05M | 2.2 N | 1.0 mm | 5.0 mm | Natural | 100,000 cycles |
| EVQP1Y05M | 2.5 N | 1.0 mm | 5.0 mm | Natural | 100,000 cycles |
| EVQP1905M | 1.6 N | 1.3 mm | 5.0 mm | Natural | 100,000 cycles |
| EVQP1F05M | 2.0 N | 1.3 mm | 5.0 mm | Natural | 100,000 cycles |
| EVQP1D05M | 2.5 N | 1.3 mm | 5.0 mm | Natural | 100,000 cycles |
| EVQP0405M | 3.0 N | 1.3 mm | 5.0 mm | Natural | 100,000 cycles |
| EVQ9P105M | 3.5 N | 1.3 mm | 5.0 mm | Natural | 30,000 cycles |

Design and specifications are each subject to change without notice. Ask factory for the current technical specifications before purchase and/or use.
Should a safety concern arise regarding this product, please be sure to contact us immediately.

■ Recommended Reflow Soldering Conditions



● Embossed Carrier Taping



Taping condition : Lack of products in the middle of taping should be one MAX, but total quantity specified in the specifications should be secured.

Peeling off strength of top tape : It should be within 0.2N to 1.0N at 165 degree in peeling off angle.

Joint of carrier tape : One joint per one reel may exist.

Unit: mm

| Part No. | Height | A | B | W | F | E | P_1 | P_2 | P_0 | D_0 Dia. | t_1 | t_2 |
|-------------------------|--------|---------|---------|----------|---------|-----------|---------|---------|---------|-----------------------------------|---------|-----------|
| EVQP0 EVQP1 EVQ9P | 5.0 | 6.4±0.2 | 7.9±0.2 | 12.0±0.3 | 5.5±0.1 | 1.75±0.10 | 8.0±0.1 | 2.0±0.1 | 4.0±0.1 | 1.5 ^{+0.1} ₋₀ | 0.4±0.1 | 5.25±0.20 |