



Chipsmall Limited consists of a professional team with an average of over 10 year of expertise in the distribution of electronic components. Based in Hongkong, we have already established firm and mutual-benefit business relationships with customers from,Europe,America and south Asia,supplying obsolete and hard-to-find components to meet their specific needs.

With the principle of “Quality Parts,Customers Priority,Honest Operation,and Considerate Service”,our business mainly focus on the distribution of electronic components. Line cards we deal with include Microchip,ALPS,ROHM,Xilinx,Pulse,ON,Everlight and Freescale. Main products comprise IC,Modules,Potentiometer,IC Socket,Relay,Connector.Our parts cover such applications as commercial,industrial, and automotives areas.

We are looking forward to setting up business relationship with you and hope to provide you with the best service and solution. Let us make a better world for our industry!



Contact us

Tel: +86-755-8981 8866 Fax: +86-755-8427 6832

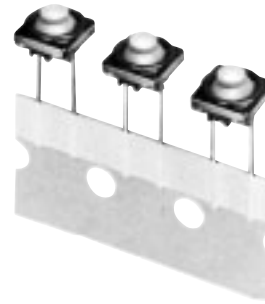
Email & Skype: info@chipsmall.com Web: www.chipsmall.com

Address: A1208, Overseas Decoration Building, #122 Zhenhua RD., Futian, Shenzhen, China



8 mm Square Long Travel 2R Light Touch Switches

Type: **EVQQJ**



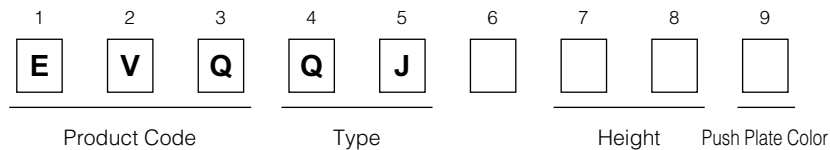
■ Features

- External dimensions : 8.0 mm×8.0 mm, Height 5.0 mm, 5.5 mm, 6.1 mm (Including the push plate)
- Long life (self-cleaning)
- Low contact resistance with metal contacts
- Small bouncing

■ Recommended Applications

- Operating Switches for car air conditioners, car audio systems, etc.
- Push switches for camcorders
- Ten-key switches for telephones

■ Explanation of Part Numbers



■ Specifications

Type		Snap action/Push-on 1-pole 1-throw SPST			
Electrical	Rating	10 μ A 2 Vdc to 5 mA 12 Vdc. (Resistive load)			
	Contact Resistance	200 m Ω max.			
	Insulation Resistance	50 M Ω min. (at 100 Vdc)			
	Dielectric Withstanding Voltage	250 Vac for 1 minute			
	Bouncing	10 ms max. (ON, OFF)			
Mechanical	Operating Force	0.8 N \pm 0.4 N	1.3 N \pm 0.6 N	2.5 N \pm 0.6 N	3.0 N \pm 0.6 N
	Travel	1.0 mm	1.0 mm	1.2 mm	1.75 mm
Endurance	Operating Life	1000000 cycles min.	100000 cycles min.	100000 cycles min.	100000 cycles min.
Operating Temperature		-20 °C to +70 °C			
Storage Temperature		-40 °C to +85 °C (Bulk) -20 °C to +40 °C (Taping)			
Minimum Quantity/Packing Unit		1000 pcs. Radial Taping (Reel Pack)			
Quantity/Carton		10000 pcs.			

■ Application Notes:

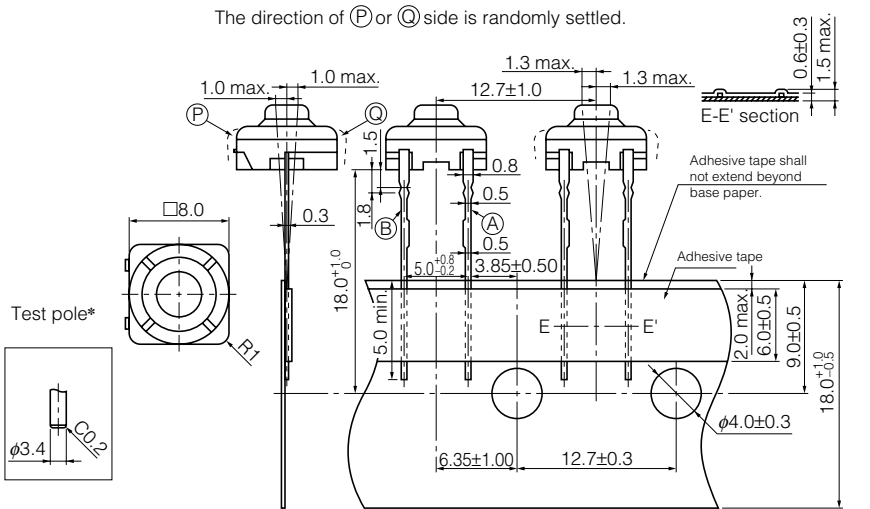
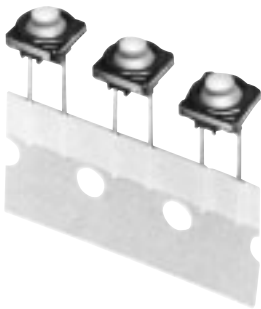
- Washing is not allowed.
- Inclination of pushing knob shall be 3 ° max.

Design and specifications are each subject to change without notice. Ask factory for the current technical specifications before purchase and/or use. Should a safety concern arise regarding this product, please be sure to contact us immediately.

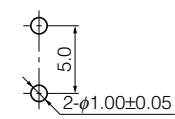
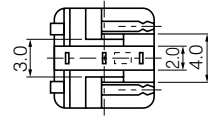
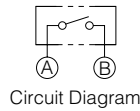
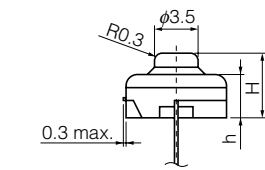
■ Dimensions in mm (not to scale)

EVQQJ

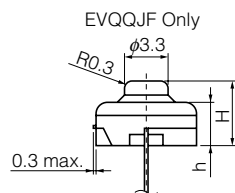
(Radial Taping)



JIS C0806-2 shall be applied to the items not specified here.



PWB mounting hole for reference
 (Pitch tolerance: ± 0.1)
 View from mounting side



Part Numbers	Operating Force	Travel	H=Height	h=Mounting Base	Push Plate Color	Operating Life
EVQQJJ05Q	0.8 N	1.0 mm	5.0 mm	3.5 mm max.	Grey	1000000 cycles
EVQQJE05D	1.3 N	1.0 mm	5.0 mm	3.6 mm max.	Orange	100000 cycles
EVQQJD05B	2.5 N	1.2 mm	5.5 mm	3.8 mm max.	Blue	100000 cycles
EVQQJF06Q	3.0 N	1.75 mm	6.1 mm	4.0 mm max.	Grey	100000 cycles

Design and specifications are each subject to change without notice. Ask factory for the current technical specifications before purchase and/or use. Should a safety concern arise regarding this product, please be sure to contact us immediately.