



Chipsmall Limited consists of a professional team with an average of over 10 year of expertise in the distribution of electronic components. Based in Hongkong, we have already established firm and mutual-benefit business relationships with customers from,Europe,America and south Asia,supplying obsolete and hard-to-find components to meet their specific needs.

With the principle of “Quality Parts,Customers Priority,Honest Operation,and Considerate Service”,our business mainly focus on the distribution of electronic components. Line cards we deal with include Microchip,ALPS,ROHM,Xilinx,Pulse,ON,Everlight and Freescale. Main products comprise IC,Modules,Potentiometer,IC Socket,Relay,Connector.Our parts cover such applications as commercial,industrial, and automotives areas.

We are looking forward to setting up business relationship with you and hope to provide you with the best service and solution. Let us make a better world for our industry!



Contact us

Tel: +86-755-8981 8866 Fax: +86-755-8427 6832

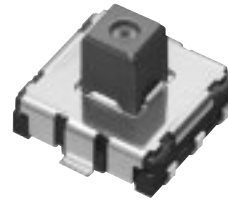
Email & Skype: info@chipsmall.com Web: www.chipsmall.com

Address: A1208, Overseas Decoration Building, #122 Zhenhua RD., Futian, Shenzhen, China



Micro Stick Switches

Type: **EVQWH**



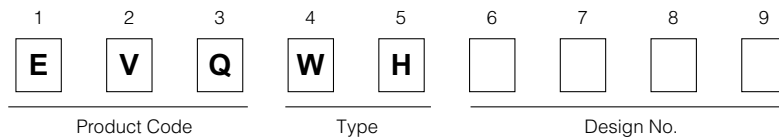
■ Features

- External dimensions: 6.1 mm×6.5 mm, height 2.05 mm
- High operability: Tactile feedback ensured in all five operating directions
- Ready for embossed taping and reflow soldering.

■ Recommended Applications

- Operation switches for menu scrolling and confirmation for portable electronic equipment (Mobile phones, Digital cameras, and PDAs)

■ Explanation of Part Numbers

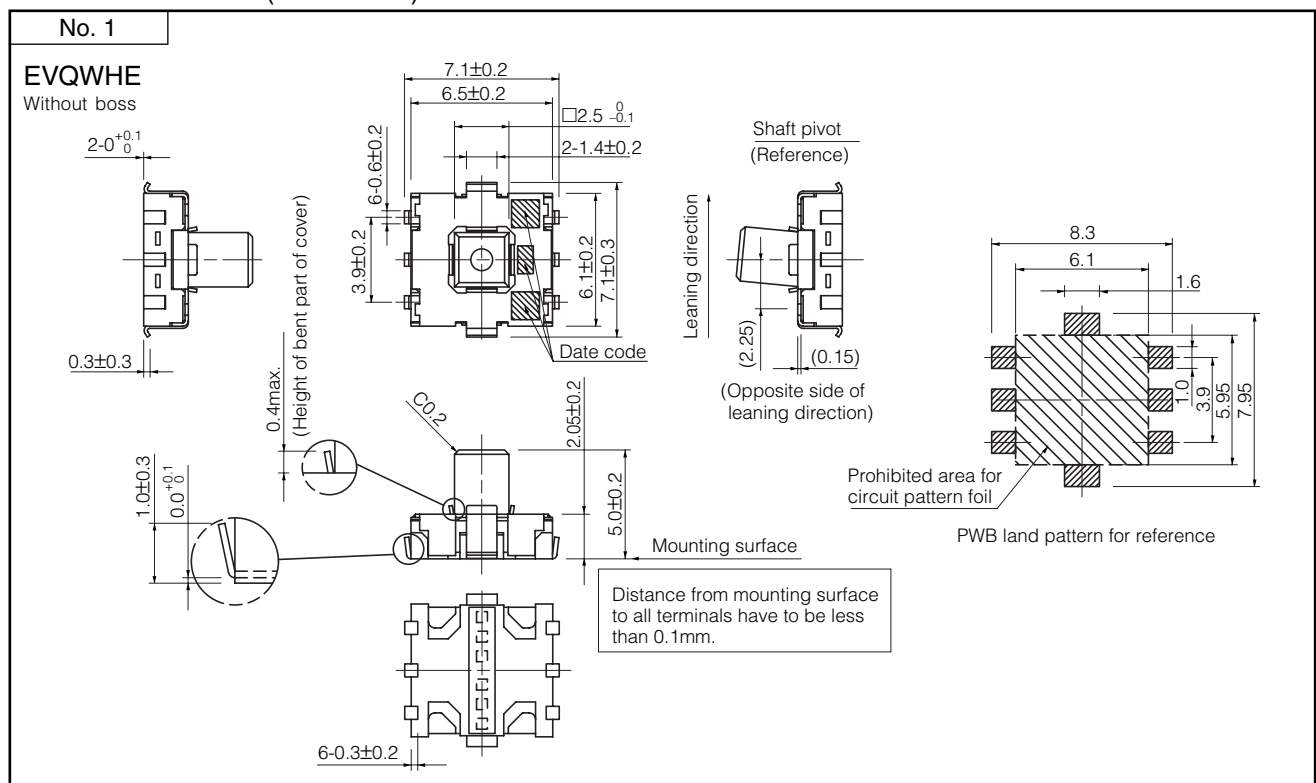


■ Specifications

Electrical	Rating	20 mA 15 Vdc	
Mechanical	Operating force	Push	2.7 N±1.0 N
		Leaning	1.4 N±0.8 N *Note1
	Travel	0.15 mm ^{+0.2} / _{-0.1} mm	
	Leaning operation angle	5 °±2 °	
Endurance	Operating life	300000 cycles min.	
Temperature range	-20 °C to +70 °C		
Minimum Quantity/Packing Unit	1200 pcs. Embossed Taping (Reel Pack)		
Quantity / Carton	6000 pcs.		

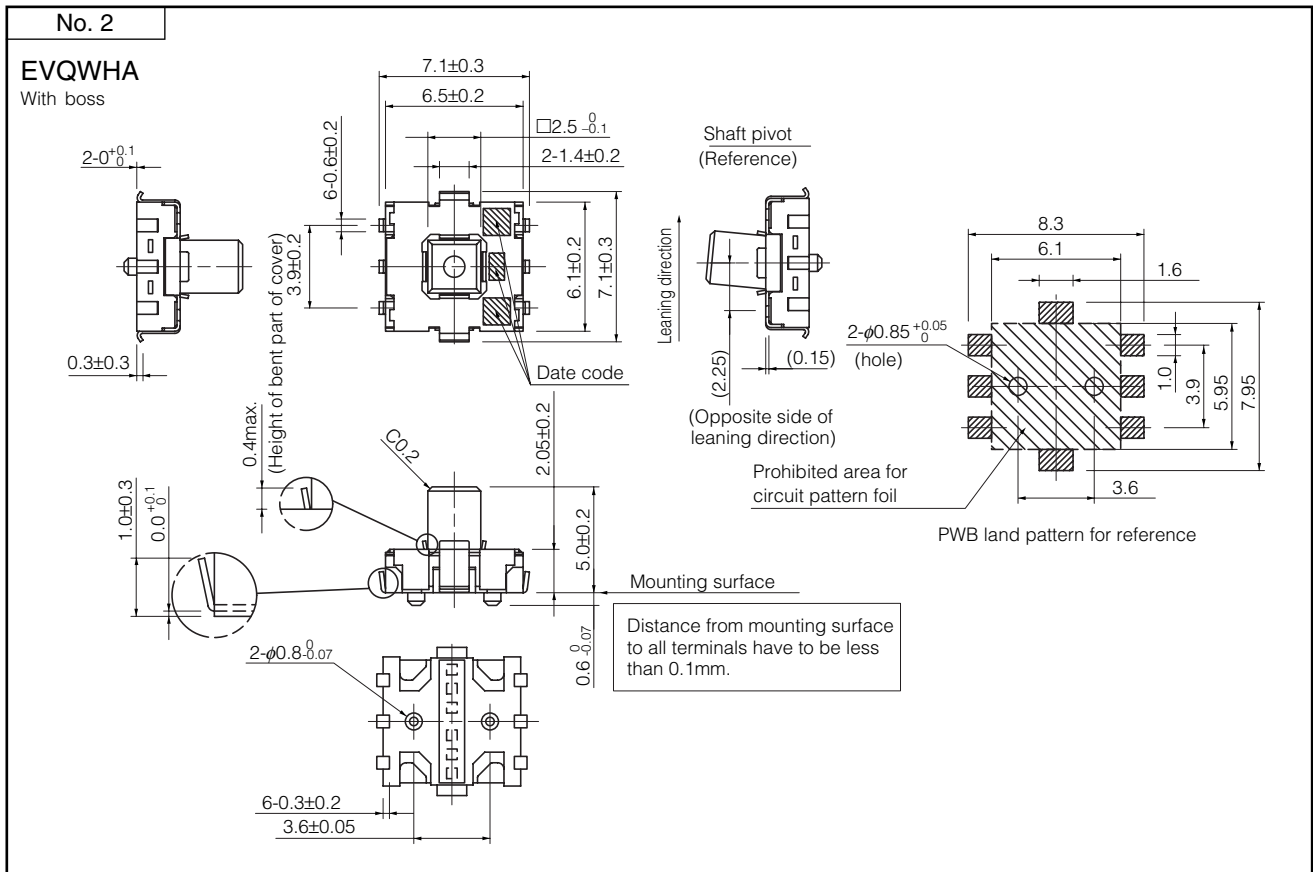
* Note1 : Leaning operation is that attach switch with ø8 knob and push edge of knob from upper side.

■ Dimensions in mm (not to scale)



Design and specifications are each subject to change without notice. Ask factory for the current technical specifications before purchase and/or use. Should a safety concern arise regarding this product, please be sure to contact us immediately.

■ Dimensions in mm (not to scale)



■ Circuit Diagram

