



Chipsmall Limited consists of a professional team with an average of over 10 year of expertise in the distribution of electronic components. Based in Hongkong, we have already established firm and mutual-benefit business relationships with customers from,Europe,America and south Asia,supplying obsolete and hard-to-find components to meet their specific needs.

With the principle of “Quality Parts,Customers Priority,Honest Operation,and Considerate Service”,our business mainly focus on the distribution of electronic components. Line cards we deal with include Microchip,ALPS,ROHM,Xilinx,Pulse,ON,Everlight and Freescale. Main products comprise IC,Modules,Potentiometer,IC Socket,Relay,Connector.Our parts cover such applications as commercial,industrial, and automotives areas.

We are looking forward to setting up business relationship with you and hope to provide you with the best service and solution. Let us make a better world for our industry!



Contact us

Tel: +86-755-8981 8866 Fax: +86-755-8427 6832

Email & Skype: info@chipsmall.com Web: www.chipsmall.com

Address: A1208, Overseas Decoration Building, #122 Zhenhua RD., Futian, Shenzhen, China



SWT/EWT Series

Non-Flammable Edgewound Tubular Wirewound Resistor

Stackpole Electronics, Inc.

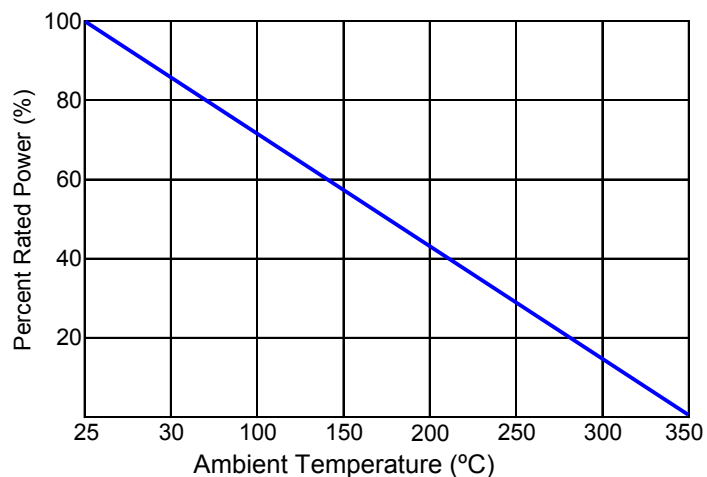
Resistive Product Solutions

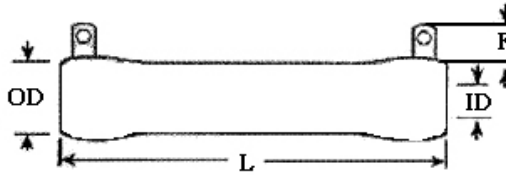
- Features:
- High current capability
 - RoHS compliant / lead-free
 - Non-inductive style only available with silicone coating (NSWT)
 - Suitable for soldering or thru bolt connections
 - Wirewound ribbon on ceramic substrate
 - SWT – Silicone coating provides temperature handling up to 350°C
 - SWTA – Adjustable version
 - EWT – Vitreous enamel coating provides temperature handling up to 500°C



Electrical Specifications					
Type / Code	Power Rating (Watts) @ 70°C	Dielectric Strength VAC	Ohmic Range (Ω) and Tolerance		
			SWT	NSWT	EWT
SWT12 / EWT12	12W	1,000	0.1 - 51K	0.1 - 53	0.1 - 5K
SWT25 / EWT25	25W	2,500	1 - 30K	0.1 - 100	0.1 - 10K
SWT50 / EWT50	50W	2,500	0.1 - 50K	0.1 - 275	0.1 - 20K
SWT100 / EWT100	100W	2,500	0.1 - 100K	0.12 - 680	0.1 - 50K
SWT150 / EWT150	150W	2,500	0.1 - 150K	0.22 - 1.5K	0.1 - 80K
SWT175 / EWT175	175W	2,500	0.15 - 100K	0.24 - 1.3K	0.1 - 100K
SWT200 / EWT200	200W	2,500	0.1 - 200K	0.25 - 1.35K	0.1 - 120K
SWT225 / EWT225	225W	2,500	0.2 - 130K	0.3 - 1.7K	0.12 - 130K
SWT250 / EWT250	250W	2,500	0.5 - 125K	0.33 - 1.8K	0.5 - 200K
SWT300 / EWT300	300W	2,500	0.5 - 150K	0.42 - 2.25K	0.5 - 240K
SWT400 / EWT400	400W	2,500	0.5 - 200K	0.54 - 3K	0.5 - 300K
SWT500 / EWT500	500W	2,500	0.5 - 250K	0.77 - 4.2K	0.5 - 400K
SWT700 / EWT700	700W	2,500	1 - 350K	1 - 5.3K	1 - 500K
SWT1000 / EWT1000	1000W	2,500	1 - 500K	1.4 - 7.6K	1 - 750K
SWT1300 / EWT1300	1300W	2,500	1 - 600K	2 - 10K	1 - 1M

Power Derating Curve:

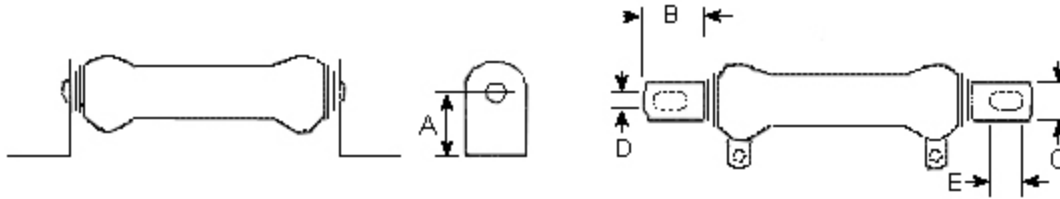




Mechanical Specifications					
Type / Code(1)	OD	ID	F	L	Unit
SWT12 / EWT12	0.31 ± 0.04	0.19 ± 0.04	0.47 ± 0.04	1.75 ± 0.08	inches
	7.94 ± 1.00	4.76 ± 1.00	12.00 ± 1.00	44.50 ± 2.00	mm
SWT25 / EWT25	0.56 ± 0.04	0.31 ± 0.04	0.47 ± 0.04	2.01 ± 0.08	inches
	14.30 ± 1.00	7.94 ± 1.00	12.00 ± 1.00	51.00 ± 2.00	mm
SWT50 / EWT50	0.56 ± 0.04	0.31 ± 0.04	0.75 ± 0.04	4.02 ± 0.08	inches
	14.30 ± 1.00	7.94 ± 1.00	19.00 ± 1.00	102.00 ± 2.00	mm
SWT100 / EWT100	0.75 ± 0.04	0.50 ± 0.04	0.67 ± 0.04	6.50 ± 0.08	inches
	19.10 ± 1.00	12.70 ± 1.00	17.00 ± 1.00	165.00 ± 2.00	mm
SWT150 / EWT150	1.10 ± 0.04	0.75 ± 0.04	0.67 ± 0.04	8.11 ± 0.08	inches
	28.00 ± 1.00	19.10 ± 1.00	17.00 ± 1.00	206.00 ± 2.00	mm
SWT175 / EWT175	1.13 ± 0.04	0.75 ± 0.04	0.67 ± 0.04	8.50 ± 0.08	inches
	28.60 ± 1.00	19.10 ± 1.00	17.00 ± 1.00	216.00 ± 2.00	mm
SWT200 / EWT200	1.38 ± 0.04	0.75 ± 0.04	0.67 ± 0.04	8.74 ± 0.08	inches
	35.00 ± 1.00	19.10 ± 1.00	17.00 ± 1.00	222.00 ± 2.00	mm
SWT225 / EWT225	1.13 ± 0.04	0.75 ± 0.04	0.71 ± 0.04	10.51 ± 0.08	inches
	28.60 ± 1.00	19.10 ± 1.00	18.00 ± 1.00	267.00 ± 2.00	mm
SWT250 / EWT250	1.57 ± 0.04	0.98 ± 0.04	0.79 ± 0.04	8.27 ± 0.08	inches
	40.00 ± 1.00	25.00 ± 1.00	20.00 ± 1.00	210.00 ± 2.00	mm
SWT300 / EWT300	1.57 ± 0.04	0.98 ± 0.04	0.79 ± 0.04	10.24 ± 0.08	inches
	40.00 ± 1.00	25.00 ± 1.00	20.00 ± 1.00	260.00 ± 2.00	mm
SWT400 / EWT400	1.57 ± 0.04	0.98 ± 0.04	0.79 ± 0.04	12.99 ± 0.08	inches
	40.00 ± 1.00	25.00 ± 1.00	20.00 ± 1.00	330.00 ± 2.00	mm
SWT500 / EWT500	1.97 ± 0.04	1.38 ± 0.04	0.98 ± 0.04	12.99 ± 0.08	inches
	50.00 ± 1.00	35.00 ± 1.00	25.00 ± 1.00	330.00 ± 2.00	mm
SWT700 / EWT700	1.97 ± 0.04	1.38 ± 0.04	0.98 ± 0.04	18.11 ± 0.08	inches
	50.00 ± 1.00	35.00 ± 1.00	25.00 ± 1.00	460.00 ± 2.00	mm
SWT1000 / EWT1000	2.36 ± 0.04	1.57 ± 0.04	1.18 ± 0.04	21.26 ± 0.08	inches
	60.00 ± 1.00	40.00 ± 1.00	30.00 ± 1.00	540.00 ± 2.00	mm
SWT1300 / EWT1300	2.56 ± 0.04	1.65 ± 0.04	1.18 ± 0.04	25.59 ± 0.08	inches
	65.00 ± 1.00	42.00 ± 1.00	30.00 ± 1.00	650.00 ± 2.00	mm

(1) EWT and NSWT series will have the same Mechanical Specifications as SWT series

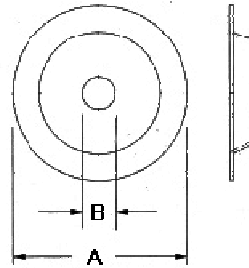
- Hardware:
- Sturdy plated steel brackets, thru-bolts, centering washers, and insulating washers
 - Brackets provide elongated mounting holes for ease of mounting



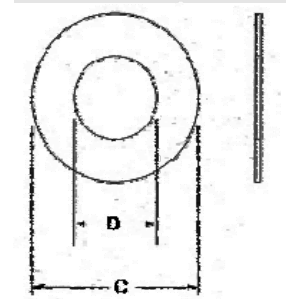
Mounting Brackets Mechanical Specifications

Resistor Power Rating	A	B	C	D	E	Units
12W	1.00	0.75	0.50	0.22	0.44	inches
	25.40	19.05	12.70	5.56	11.13	mm
25W	1.00	0.75	0.50	0.22	0.44	inches
	25.40	19.05	12.70	5.56	11.13	mm
50W	1.00	0.75	0.50	0.22	0.44	inches
	25.40	19.05	12.70	5.56	11.13	mm
100W	1.00	0.75	0.50	0.22	0.44	inches
	25.40	19.05	12.70	5.56	11.13	mm
150W	1.50	0.88	1.25	0.28	0.56	inches
	38.10	22.23	31.75	7.14	14.30	mm
175W	1.50	0.88	1.25	0.28	0.56	inches
	38.10	22.23	31.75	7.14	14.30	mm
200W	1.50	0.88	1.25	0.28	0.56	inches
	38.10	22.23	31.75	7.14	14.30	mm
225W	1.50	0.88	1.25	0.28	0.56	inches
	38.10	22.23	31.75	7.14	14.30	mm
250W	1.50	0.88	1.25	0.28	0.56	inches
	38.10	22.23	31.75	7.14	14.30	mm
300W	1.50	0.88	1.25	0.28	0.56	inches
	38.10	22.23	31.75	7.14	14.30	mm
400W	1.50	0.88	1.25	0.28	0.56	inches
	38.10	22.23	31.75	7.14	14.30	mm
500W	3.00	1.50	2.50	0.41	-	inches
	76.20	38.10	63.50	10.3	-	mm
700W	1.50	0.88	1.25	0.28	0.56	inches
	38.10	22.23	31.75	7.14	14.30	mm
1000W	3.00	1.50	2.50	0.41	-	inches
	76.20	38.10	63.50	10.30	-	mm
1300W	3.00	1.50	2.50	0.41	-	inches
	76.20	38.10	63.50	10.30	-	mm

Metal Centering Washer



Mica Insulating Washer



Bolt and Washers Mechanical Specifications

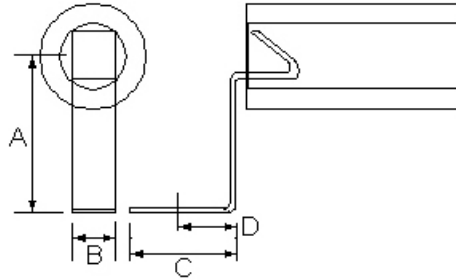
Resistor Power Rating	OD	Core Length	Bolt Length	Bolt No.	A	B	C	D	Units
12W	0.31	1.75	2.25	8	0.31	-	-	-	inches
	7.95	44.40	57.15		7.95	-	-	-	mm
25W	0.56	2.01	2.50	10	0.56	0.19	0.75	0.31	inches
	14.30	51.00	63.50		14.22	4.83	19.05	7.95	mm
50W	0.56	4.02	4.75	10	0.56	0.19	0.75	0.31	inches
	14.30	102.00	120.65		14.22	4.83	19.05	7.95	mm
100W	0.75	6.50	7.00	10	0.75	0.19	1.00	0.50	inches
	19.10	165.00	177.80		19.05	4.83	25.40	12.70	mm
150W	1.10	8.11	7.75	0.25"	1.12	0.25	1.25	0.62	inches
	28.00	206.00	196.85		28.58	6.35	31.75	15.88	mm
175W	1.13	8.50	9.13	0.25"	1.12	0.25	1.50	0.75	inches
	28.60	216.00	231.78		28.58	6.35	38.10	19.05	mm
200W	1.38	8.74	9.25	0.25"	1.40	0.25	1.50	0.75	inches
	35.00	222.00	234.95		35.56	6.35	38.10	19.05	mm
225W	1.13	10.51	11.25	0.25"	1.12	0.25	1.50	0.75	inches
	28.60	267.00	285.75		28.58	6.35	38.10	19.05	mm
250W	1.57	8.74	9.25	0.5"	1.57	0.50	2.00	1.00	inches
	40.00	222.00	234.95		39.88	12.70	50.80	25.40	mm
300W	1.57	10.71	11.13	0.5"	1.57	0.50	2.00	1.00	inches
	40.00	272.00	282.58		39.88	12.70	50.80	25.40	mm
400W	1.57	13.46	14.00	0.5"	1.57	0.50	2.00	1.00	inches
	40.00	342.00	355.60		39.88	12.70	50.80	25.40	mm
500W	2.50	12.01	12.50	0.5"	2.50	0.50	3.00	1.50	inches
	63.50	305.00	317.50		63.50	12.70	76.20	38.10	mm
700W	1.97	18.19	18.75	0.5"	1.97	0.50	2.25	1.25	inches
	50.00	462.00	476.25		50.04	12.70	57.15	31.75	mm
1000W	2.50	20.00	20.50	0.5"	2.50	0.50	3.00	1.50	inches
	63.50	508.00	520.70		63.50	12.70	76.20	38.10	mm
1300W	2.56	26.26	27.00	0.5"	2.56	0.50	3.00	1.50	inches
	65.00	667.00	685.80		65.02	12.70	76.20	38.10	mm

SWT/EWT Series

Non-Flammable Edgewound Tubular Wirewound Resistor

Stackpole Electronics, Inc.

Resistive Product Solutions



Spring Clip Mechanical Specifications

Resistor Power Rating	A	B	C	D	Units
12W	0.28	0.25	0.34	0.19	inches
	7.14	6.35	8.74	4.78	mm
25W	0.63	0.25	0.47	0.31	inches
	15.88	6.35	11.91	7.95	mm
50W	0.63	0.25	0.47	0.31	inches
	15.88	6.35	11.91	7.95	mm

How to Order

1	2	3	4	5	6	7	8	9	10	11	12
E	W	T	M	5	0	J	B	2	0	0	R

Product Series		Code	Description	Code	Power	Tolerance		Packaging				Resistance Value
SWT	Silicone Coating (std)	-	Std Tab Connection	12	12W	Code	Tol	B	Bulk	All Sizes	Each	Four characters with the multiplier used as the decimal holder. 0.1 ohm = R100 1 ohm = 1R00 10 Kohm = 10K0
EWT	Vitreous Enamel	M	Mounting Hardware	25	25W	J	5%					
NSWT	Non-inductive Silicone Coating	S	Spring Clips	50	50W	K	10%					
		L	Welded Straight Leads	100	100W							
		A	Adjustable	150	150W							
				175	175W							
				200	200W							
				225	225W							
				250	250W							
				300	300W							
				400	400W							
				500	500W							
		700	700W									
		1000	1000W									
		1300	1300W									

Legacy Part Number (before January 3, 2011):

SEI Type	Termination	Power Rating	Nominal Resistance	Tolerance	Packaging
EWT	M	50	200	5%	B

Type	Description	Code	Description	Code	Tolerance	Code	Description
SWT	Silicone Coating (std)	-	Std Tab Connection	12	5%	B	Bulk
EWT	Vitreous Enamel	M	Mounting Hardware	25			
NSWT	Non-Inductive Silicone Coating	S	Spring Clips	50	10%		
		L	Welded Straight Leads	100			
		A	Adjustable	150			
				175			
				200			
				225			
				250			
				300			
				400			
				500			
		700					
		1000					
		1300					