



Chipsmall Limited consists of a professional team with an average of over 10 year of expertise in the distribution of electronic components. Based in Hongkong, we have already established firm and mutual-benefit business relationships with customers from,Europe,America and south Asia,supplying obsolete and hard-to-find components to meet their specific needs.

With the principle of “Quality Parts,Customers Priority,Honest Operation,and Considerate Service”,our business mainly focus on the distribution of electronic components. Line cards we deal with include Microchip,ALPS,ROHM,Xilinx,Pulse,ON,Everlight and Freescale. Main products comprise IC,Modules,Potentiometer,IC Socket,Relay,Connector.Our parts cover such applications as commercial,industrial, and automotives areas.

We are looking forward to setting up business relationship with you and hope to provide you with the best service and solution. Let us make a better world for our industry!



## Contact us

Tel: +86-755-8981 8866 Fax: +86-755-8427 6832

Email & Skype: info@chipsmall.com Web: www.chipsmall.com

Address: A1208, Overseas Decoration Building, #122 Zhenhua RD., Futian, Shenzhen, China



# zilog® Smart Flash Programmer

## Product Brief

PB015808-0508

### Overview

Zilog's Smart Flash Programmer (SFP) version 2.2 is a software tool used to program Flash devices that supports all Zilog's Flash based microcontroller products. SFP supports low-volume production programming and field service upgrades.

SFP is compatible with Microsoft Windows operating system and supports Ethernet Smart Cable, USB Smart Cable, Serial Smart Cable, and ZPAK II with CAT5 Ethernet Cable. It is a cost-effective tool used to program both internal and external Flash memory devices for Zilog microcontrollers.

SFP software is available for free download at [www.zilog.com](http://www.zilog.com).

### Product Highlights

Key features of SFP v2.2 include:

- Supports all Zilog's Flash based microcontroller products (eZ80Acclaim!®, ZNEO®, Crimson®, **NEW** and Z8 Encore!® Series of MCUs)
- Provides Code Memory window **NEW**
- Supports Date and Time Serialization **NEW**

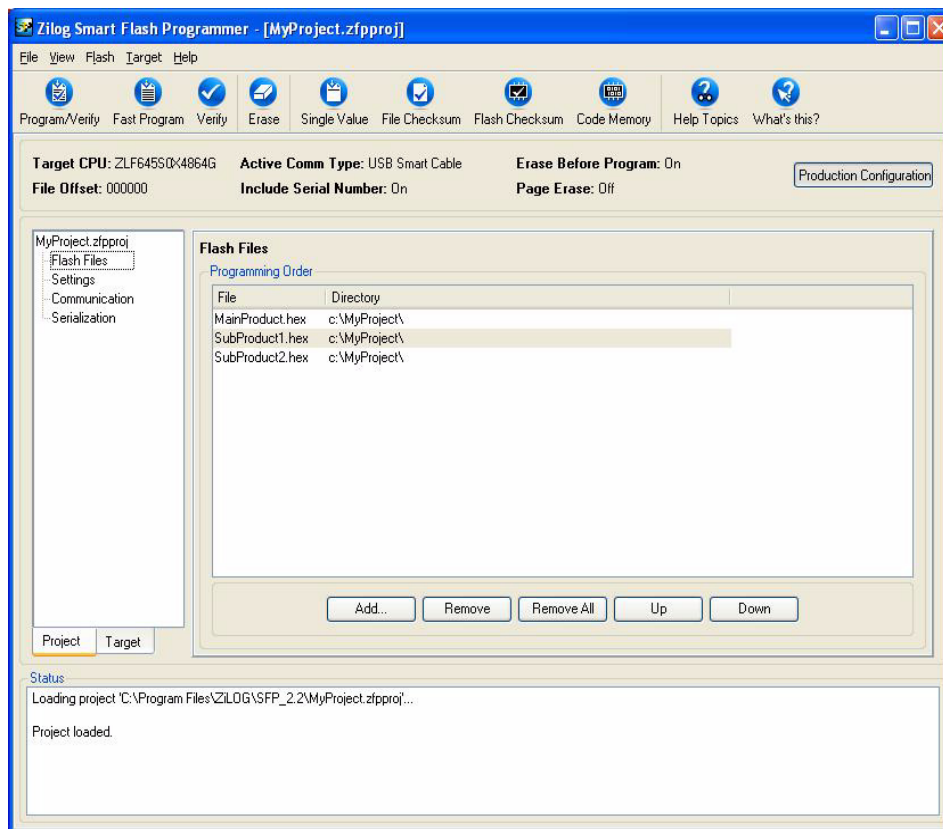


Figure 1. SFP Graphical User Interface

## Features

SFP is designed to support hex files generated using Zilog Developer Studio II (ZDS II) Integrated Development Environment (IDE). ZDS II supports code editing, assembler/C-compiler/linker features, source-level debugging, and project managing facilities for quick and efficient development of embedded applications. ZDS II is available for free download at [www.zilog.com](http://www.zilog.com) and is also included with all Zilog® Flash based devices.

The general features of SFP include:

- Single step programming
- Windows®-based Flash programming tool
- Two end-user configurations:
  - *Setup* configuration provides options to configure all communication and memory settings specific to target board
  - *Production* configuration provides minimal interfaces to Program, Verify, and Erase the Flash
- Supports multiple hex file programming
- Programs multiple targets attached sequentially over Ethernet or USB Smart Cables
- Provides interface to calculate hex file and Flash checksum
- Supports following types of serialization for assigning a unique ID to the target:
  - Autoincrement serialization
  - Hex, Decimal, Date and Time, IP, and MAC serialization values
- Provides programming support to various external Flash devices: Atmel, Micron, STMicro, Intel, and AMD
- Provides scripting commands to automate the execution

## Debug Tool Requirements

Use one of the following cables to connect the PC to the target board:

- Serial Smart Cable
- USB Opto-isolated Smart Cable
- USB Smart Cable
- Ethernet Smart Cable
- ZPAK II with CAT 5 Ethernet Cable (eZ80Acclaim!)

See [Ordering Information](#) for part number details.

## Sample Application

SFP package includes sample applications for various eZ80Acclaim!®, Z8 Encore!®, Crimzon®, and ZNEO® Series of MCUs.

## Documentation

For more information on using SFP and building projects, refer to the following documents:

- *Smart Flash Programmer Quick Start Guide (QS0058)*: Provides introduction, installation steps, and getting started with SFP.
- *Online Help*: Online Help is integrated with the SFP application.

## Ordering Information

Order the debug tools from Zilog®, providing the part numbers as given below:

Part Number	Description
Z8ENCORE000ZAC	Z8 Encore!® Serial Smart Cable Accessory Kit (not recommended for new design)
EZ800000100ZAC	eZ80Acclaim!® Serial Smart Cable Accessory Kit (not recommended for new design)
ZUSBSC00100ZACG	USB Smart Cable Accessory Kit
ZDI232ZPAK2ZPK	ZPAK II Debug Interface Module (not recommended for new design)
ZUSBOPTSC01ZACG	USB Opto-isolated Smart Cable Accessory Kit
ZENETSC0100ZACG	Ethernet Smart Cable Accessory Kit

For more information on ordering, contact your local Zilog sales office. The Zilog website, [www.zilog.com](http://www.zilog.com), lists all regional offices and provides additional SFP product information.



**Warning:** DO NOT USE IN LIFE SUPPORT

## **LIFE SUPPORT POLICY**

ZILOG'S PRODUCTS ARE NOT AUTHORIZED FOR USE AS CRITICAL COMPONENTS IN LIFE SUPPORT DEVICES OR SYSTEMS WITHOUT THE EXPRESS PRIOR WRITTEN APPROVAL OF THE PRESIDENT AND GENERAL COUNSEL OF ZILOG CORPORATION.

### **As used herein**

Life support devices or systems are devices which (a) are intended for surgical implant into the body, or (b) support or sustain life and whose failure to perform when properly used in accordance with instructions for use provided in the labeling can be reasonably expected to result in a significant injury to the user. A critical component is any component in a life support device or system whose failure to perform can be reasonably expected to cause the failure of the life support device or system or to affect its safety or effectiveness.

### **Document Disclaimer**

©2008 by Zilog, Inc. All rights reserved. Information in this publication concerning the devices, applications, or technology described is intended to suggest possible uses and may be superseded. ZILOG, INC. DOES NOT ASSUME LIABILITY FOR OR PROVIDE A REPRESENTATION OF ACCURACY OF THE INFORMATION, DEVICES, OR TECHNOLOGY DESCRIBED IN THIS DOCUMENT. ZILOG ALSO DOES NOT ASSUME LIABILITY FOR INTELLECTUAL PROPERTY INFRINGEMENT RELATED IN ANY MANNER TO USE OF INFORMATION, DEVICES, OR TECHNOLOGY DESCRIBED HEREIN OR OTHERWISE. The information contained within this document has been verified according to the general principles of electrical and mechanical engineering.

Z8 Encore!, ZNEO, Crimzon, and eZ80Acclaim! are registered trademarks of Zilog, Inc. All other product or service names are the property of their respective owners.