



Chipsmall Limited consists of a professional team with an average of over 10 year of expertise in the distribution of electronic components. Based in Hongkong, we have already established firm and mutual-benefit business relationships with customers from,Europe,America and south Asia,supplying obsolete and hard-to-find components to meet their specific needs.

With the principle of "Quality Parts,Customers Priority,Honest Operation,and Considerate Service",our business mainly focus on the distribution of electronic components. Line cards we deal with include Microchip,ALPS,ROHM,Xilinx,Pulse,ON,Everlight and Freescale. Main products comprise IC,Modules,Potentiometer,IC Socket,Relay,Connector.Our parts cover such applications as commercial,industrial, and automotives areas.

We are looking forward to setting up business relationship with you and hope to provide you with the best service and solution. Let us make a better world for our industry!



Contact us

Tel: +86-755-8981 8866 Fax: +86-755-8427 6832

Email & Skype: info@chipsmall.com Web: www.chipsmall.com

Address: A1208, Overseas Decoration Building, #122 Zhenhua RD., Futian, Shenzhen, China



2500W Bi-Directional DC-DC Converter

Features

- ◆ 1U rackmount
- ◆ Battery Side 48VDC
- ◆ Grid Side 320VDC
- ◆ High Efficiency (92%)
- ◆ RS-485 Communications & Control

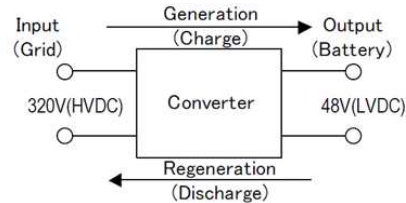


Key Market Segments & Applications



Renewable

Basic Operation



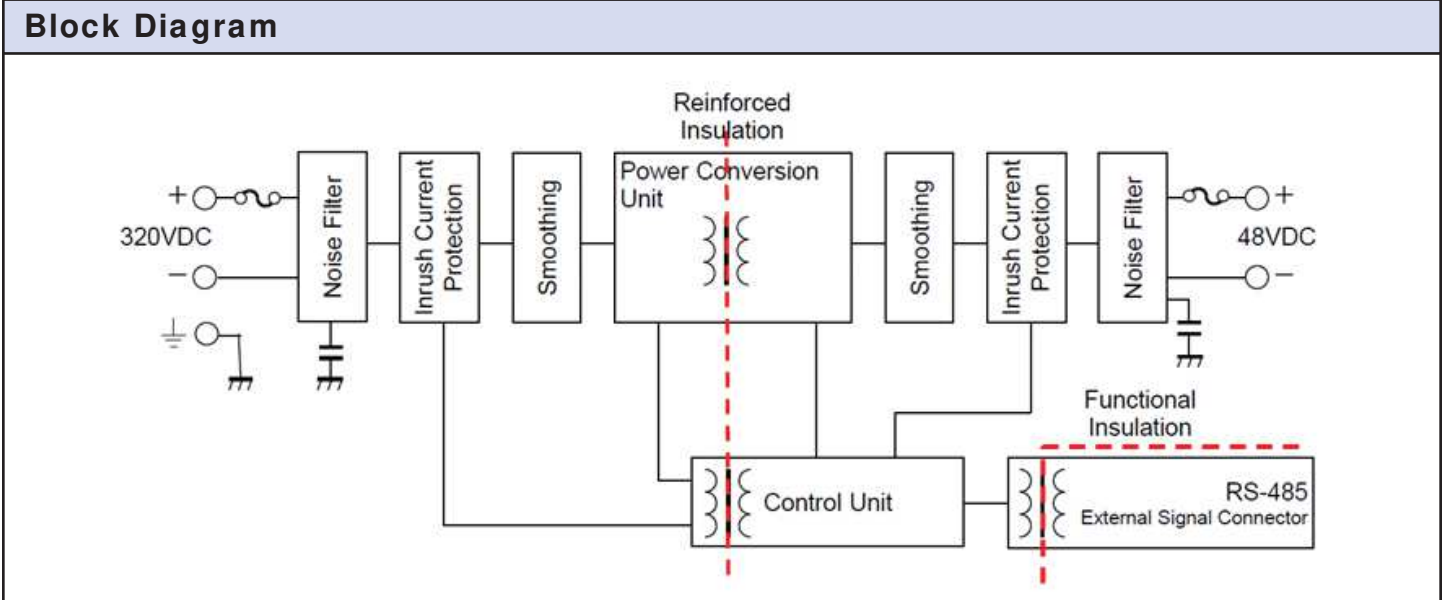
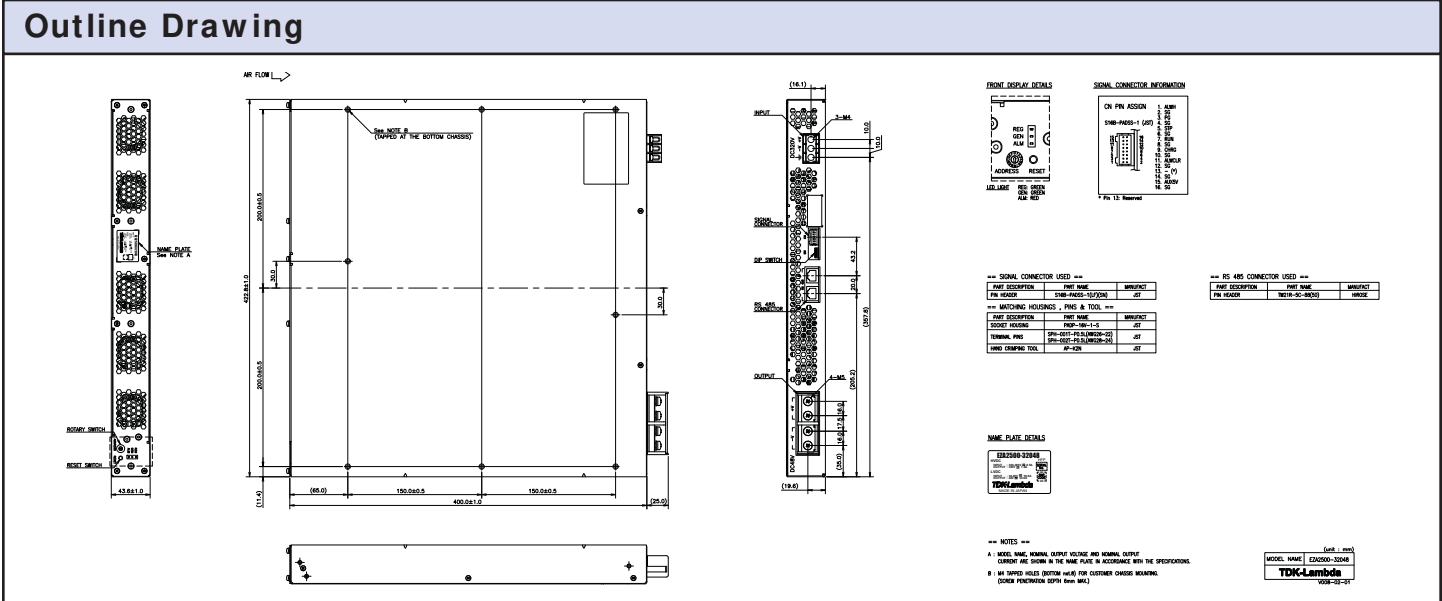
Specifications

Model		Low Voltage DC (Battery Side)	High Voltage DC (Grid Side)
Voltage Range (1)(2)	VDC	36 - 60VDC (48V Nominal)	300 - 380VDC (320V Nominal)
Output Current (Maximum)	A	±52A	±7.8A
Constant Current Programming Range (1)(2)	A	2.4 - 56A	0.5 - 8.5A
Maximum Output Power	W	±2,496W	±2,496W
Efficiency	%	92%	92%
Pre-charge Voltage (required)	VDC	> 36V	>300V
Inrush Current (Typical)	A	5.5A	3.6A
Line Regulation (Maximum)	-	240mV	1.52V
Load Regulation (Maximum)	-	480mV	3.04V
Temperature Regulation (Maximum)	-	300mV	1.9V
Output Ripple & Noise (Maximum pk-pk)	-	480mV	3.2V
Sink Current (When applied V > output set V)	mA	300mA	50mA
Overcurrent Protection (Manual reset)	A	60A	9.5A
Overpower Protection	W	2600W (Constant power)	2600W (Constant power)
Input Current Limit (typical)	A	-	56A
Under & Overvoltage Protection (2)	V	32 - 68V	260 - 425V
Overtemperature Protection	-	Yes, Alarm signal is given	
Remote On/Off & Reset (2)	-	Yes	
Parallel Operation	-	Yes (Droop mode, can be set via RS-485)	
Front panel Indicators and Settings	-	Operating mode (Generating, Regenerating & Alarm), Alarm clear & RS-485 address selection	
Operating Temperature	°C	-10 to +40°C, full load	
Storage Temperature	°C	-20 to +70°C	
Humidity (Non condensing)	%RH	Operating: 30 - 90%RH, Storage: 10 - 95%RH	
Cooling	-	Internal fan	
Vibration (Non operating)	-	10-500Hz (1 min sweep), 10.2m/s ² constant for 1 hour in each direction: X, Y & Z axis	
Shock	-	196.1m/s ² maximum	
Withstand Voltage	-	Input (HVDC) to Output (LVDC) 3kVAC, Input to Ground 2kVAC, Output to Ground 500VAC	
Isolation Resistance	MΩ	>100MΩ at 25°C & 70%RH, Output to Ground 500VDC	
Safety Certification	-	UL60950-1, CSA60950-1, EN60950-1, CE Mark (LVD & RoHS2)	
Size (W x H x D)	mm	422.8 x 43.6 x 400mm	
Weight	g	8000g	
Warranty	Yrs	Five Years	

Notes

- (1) See installation manual for detailed specifications & test methods
- (2) Can be set via RS-485

RS-485 Functions		Low Voltage DC (Battery Side)	High Voltage DC (Grid Side)
Model			
Voltage Setting Accuracy	-	< ±0.6V	< ±4V
Current Setting Accuracy	-	< ±0.8A	< +/-0.125A
Voltage Setting Resolution	-	< 60mV	< 0.4V
Current Setting Resolution	-	< 50mA	< 8mA
Voltage Reading Accuracy	-	< ±0.6V	< ±4V
Current Reading Accuracy	-	< ±0.8A	< ±0.125A
Voltage Reading Resolution	-	< 60mV	< 0.4V
Current Reading Resolution	-	< 50mA	< 8mA
RS-485 Baud Rate	-	19.2kbps / 33.6kbps / 57.6kbps (Set by DIP Switch)	
RS-485 Maximum Connection	-	14	



For Additional Information, please visit us.tdk-lambda.com/lp/products/eza-series.htm

