



Chipsmall Limited consists of a professional team with an average of over 10 year of expertise in the distribution of electronic components. Based in Hongkong, we have already established firm and mutual-benefit business relationships with customers from,Europe,America and south Asia,supplying obsolete and hard-to-find components to meet their specific needs.

With the principle of “Quality Parts,Customers Priority,Honest Operation,and Considerate Service”,our business mainly focus on the distribution of electronic components. Line cards we deal with include Microchip,ALPS,ROHM,Xilinx,Pulse,ON,Everlight and Freescale. Main products comprise IC,Modules,Potentiometer,IC Socket,Relay,Connector.Our parts cover such applications as commercial,industrial, and automotives areas.

We are looking forward to setting up business relationship with you and hope to provide you with the best service and solution. Let us make a better world for our industry!



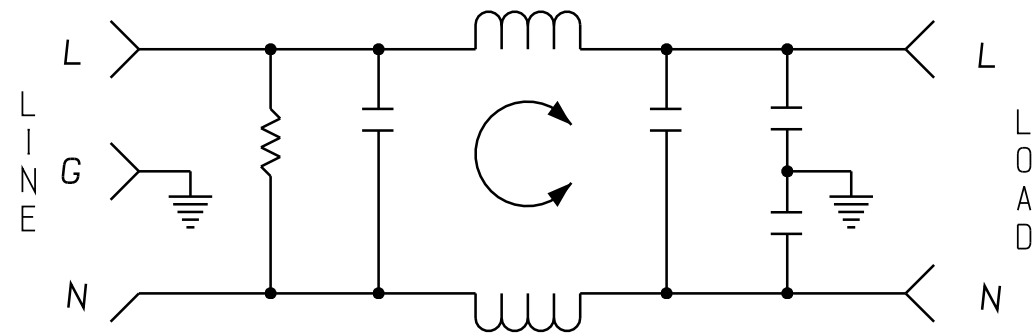
Contact us

Tel: +86-755-8981 8866 Fax: +86-755-8427 6832

Email & Skype: info@chipsmall.com Web: www.chipsmall.com

Address: A1208, Overseas Decoration Building, #122 Zhenhua RD., Futian, Shenzhen, China





SCHEMATIC DIAGRAM

MINIMUM INSERTION LOSS 50Ω CIRCUIT			
COMMON MODE		DIFFERENTIAL MODE	
mHz	min. I.L. (dB)	mHz	min. I.L. (dB)
.05		.05	
.15	10	.15	5
0.5	20	0.5	5
1.0	25	1.0	40
5.0	25	5.0	50
10	28	10	50
20		20	
30	30	30	50

TEST SPECIFICATIONS

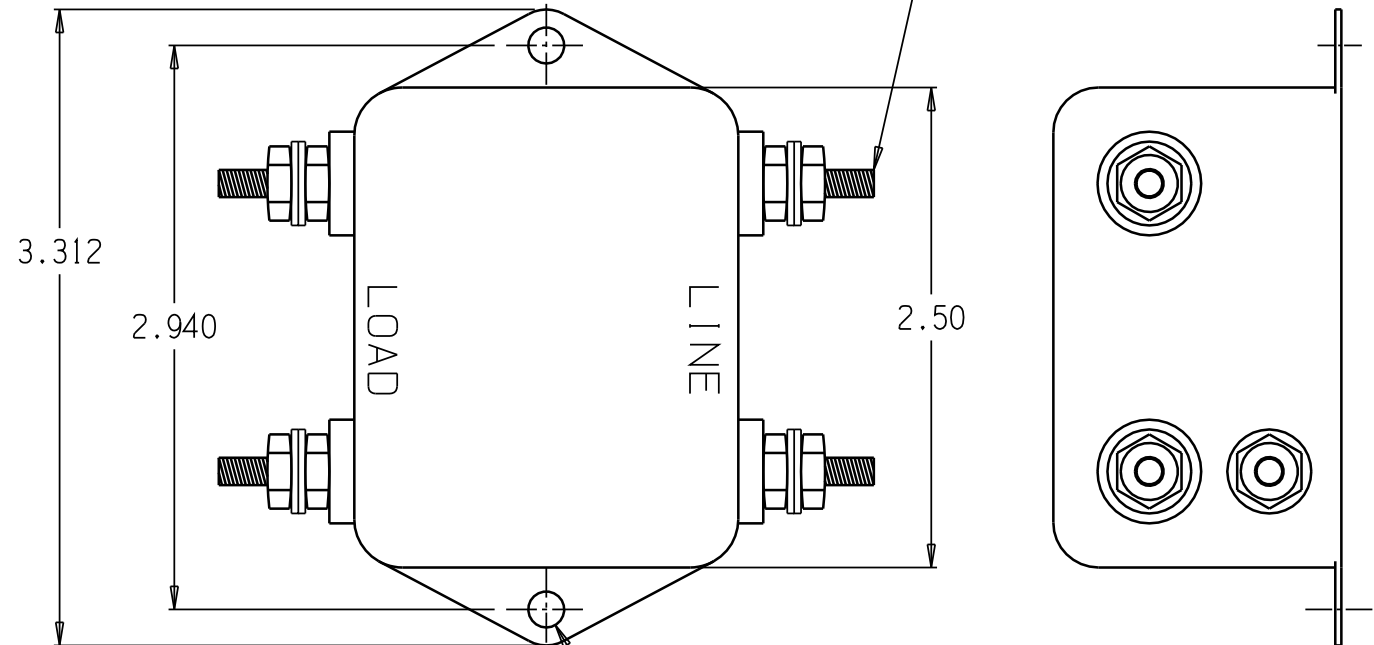
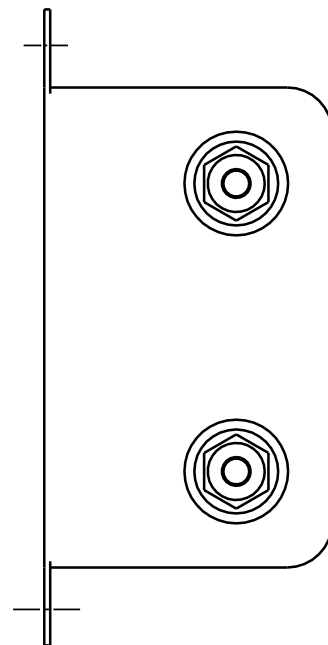
HI-POT (1 min.) L/G 1500 VAC
 L/L 1768 VDC
 RATED VOLTAGE: 250 VAC MAXIMUM
 RATED CURRENT: at 115 VAC 20 A MAXIMUM
 at 250 VAC 10 A MAXIMUM
 LINE FREQUENCY 50/60 Hz
 CURRENT OVERLOAD 6X FOR 8 SECOND(S)
 INSULATION RESISTANCE 9000 MEGOHMS MINIMUM at 100VDC
 LEAKAGE CURRENT at 115 VAC, 60Hz .030 mA MAXIMUM
 at 250 VAC, 50Hz .050 mA MAXIMUM

ENVIRONMENTAL SPECIFICATIONS

AMBIENT TEMPERATURE RANGE 0 deg.C to 40 deg.C
 (OPERATING AT RATED CURRENT)
 HUMIDITY RANGE 0 % to 95 % R.H.

APPROVALS: UL, CSA, TUV

RoHS COMPLIANT



TOLERANCE FOR THIS SHEET ONLY:

.XX ±.02
 .XXX ±.010

SCALE: 1:1

CONFIDENTIAL-PROPRIETARY TO CURTIS INDUSTRIES. NOT TO BE SHARED WITH THIRD PARTY WITHOUT WRITTEN PERMISSION FROM CURTIS INDUSTRIES					
CAD FILENAME: F1290DD20 RevA B 3.prt	SCALE NTS	DRAWN LAW	CHECKED C.J.DEBRAAL	DATE 10-21-11	REV. A
FOR TOLERANCE AND CHANGE INFORMATION SEE SHEET 1	SIZE B	SHT. 3 OF 3	DWG NO. F1290DD20		