



Chipsmall Limited consists of a professional team with an average of over 10 year of expertise in the distribution of electronic components. Based in Hongkong, we have already established firm and mutual-benefit business relationships with customers from,Europe,America and south Asia,supplying obsolete and hard-to-find components to meet their specific needs.

With the principle of “Quality Parts,Customers Priority,Honest Operation,and Considerate Service”,our business mainly focus on the distribution of electronic components. Line cards we deal with include Microchip,ALPS,ROHM,Xilinx,Pulse,ON,Everlight and Freescale. Main products comprise IC,Modules,Potentiometer,IC Socket,Relay,Connector.Our parts cover such applications as commercial,industrial, and automotives areas.

We are looking forward to setting up business relationship with you and hope to provide you with the best service and solution. Let us make a better world for our industry!



Contact us

Tel: +86-755-8981 8866 Fax: +86-755-8427 6832

Email & Skype: info@chipsmall.com Web: www.chipsmall.com

Address: A1208, Overseas Decoration Building, #122 Zhenhua RD., Futian, Shenzhen, China



LINNEA-UP

Asymmetric beam for uplighting

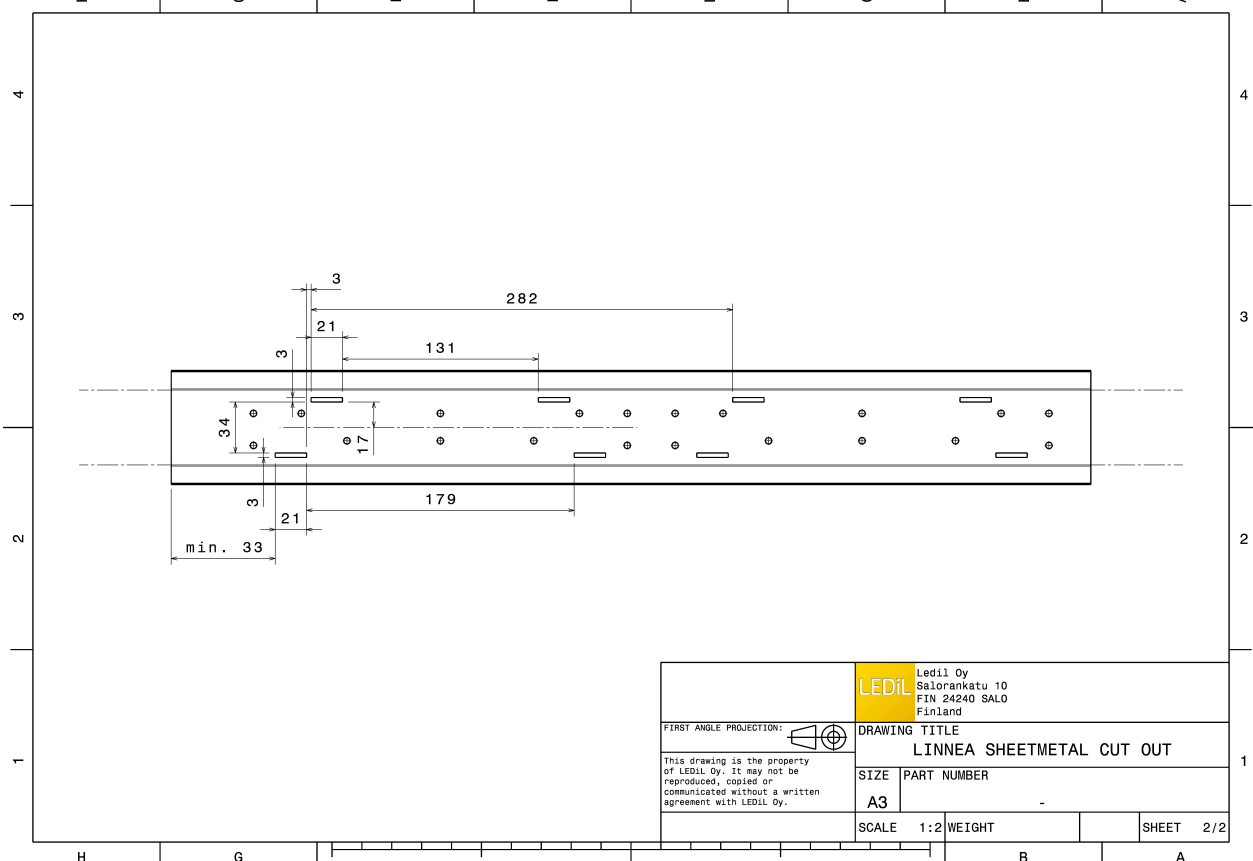
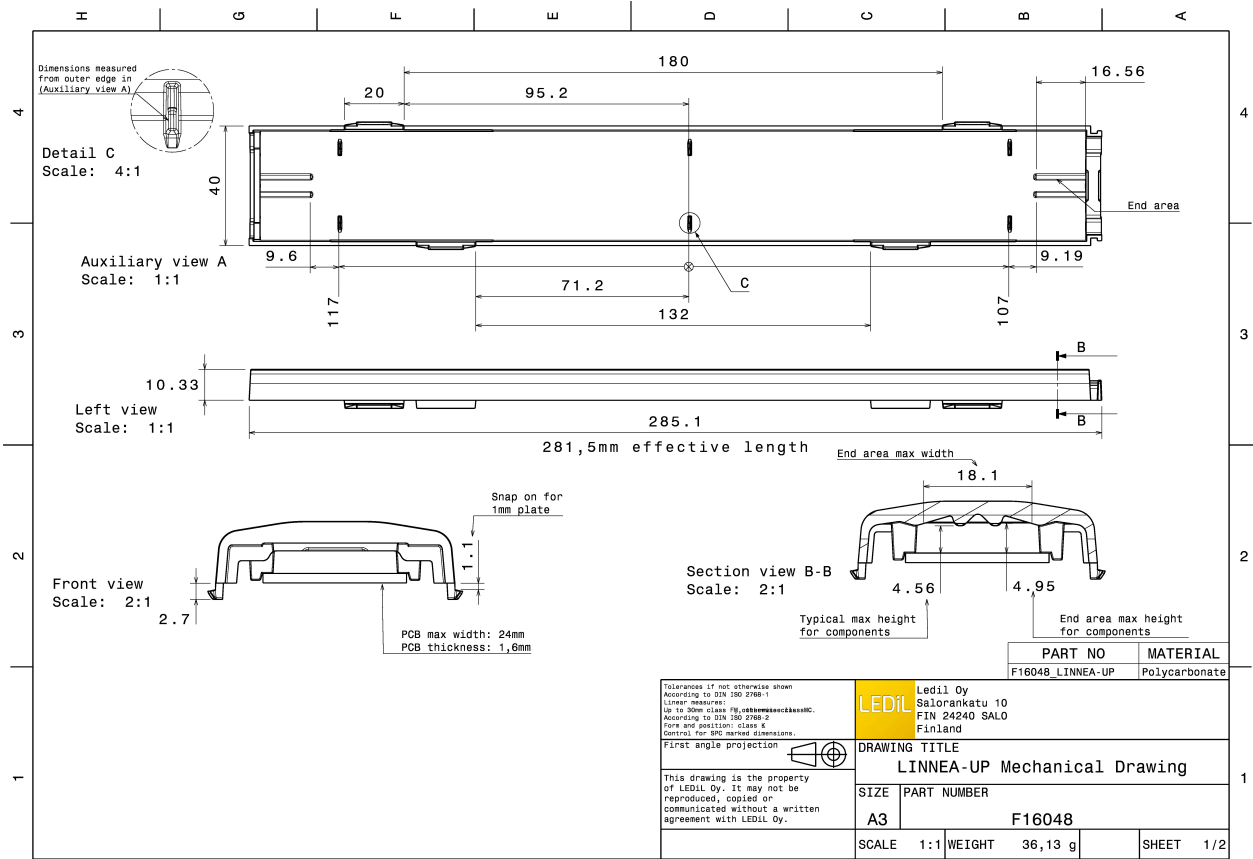
TECHNICAL SPECIFICATIONS:

Dimensions	285.0 x 40.0 mm
Height	10.3 mm
Fastening	clips
Colour	clear
Box size	578 x 378 x 295 mm
Box weight	7.3 kg
Quantity in Box	180 pcs
ROHS compliant	yes ⓘ



MATERIAL SPECIFICATIONS:

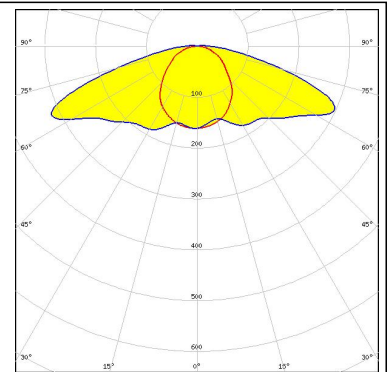
Component	Type	Material	Colour
LINNEA-UP	Lens	PC	clear



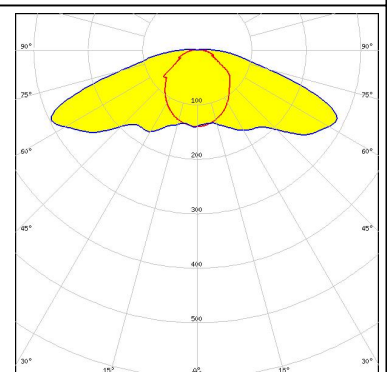
PHOTOMETRIC DATA (MEASURED):



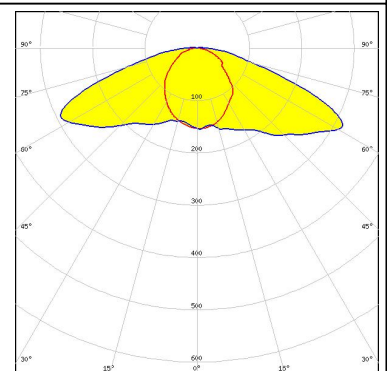
LED Tridino 1ft 1100lm xxxHE 1R HV
FWHM Asymmetric
Efficiency 79 %
Peak intensity 0.320 cd/lm
Required components:



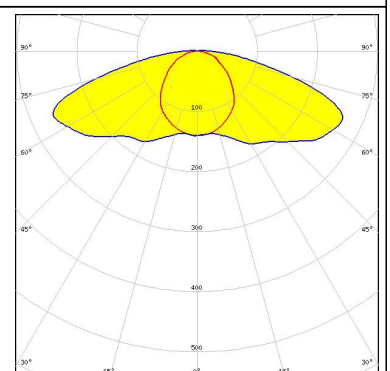
LED XP-E
FWHM Asymmetric
Efficiency 76 %
Peak intensity 0.300 cd/lm
Required components:



LED NF2x757G
FWHM Asymmetric
Efficiency 77 %
Peak intensity 0.320 cd/lm
Required components:



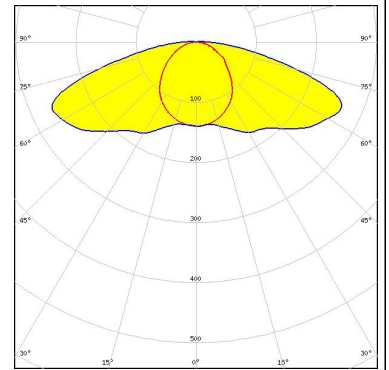
LED PrevaLED Linear Slim 3 (1100lm)
FWHM Asymmetric
Efficiency 74 %
Peak intensity 0.270 cd/lm
Required components:



PHOTOMETRIC DATA (MEASURED):

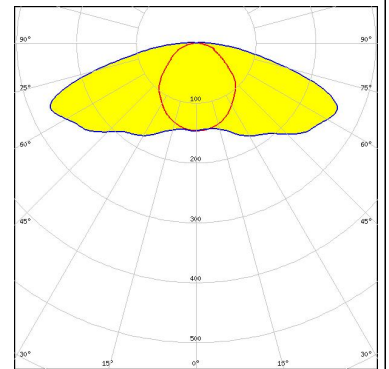
OSRAM

LED PrevaLED Linear Slim 3 (2000lm)
FWHM Asymmetric
Efficiency 74 %
Peak intensity 0.270 cd/lm
Required components:



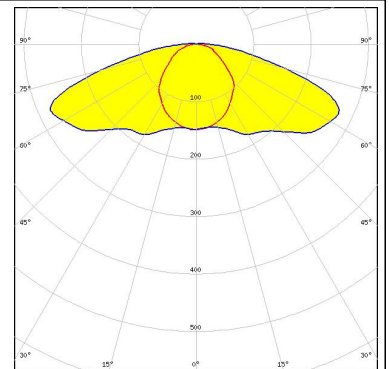
OSRAM Opto Semiconductors

LED Duris S5 (2 chip)
FWHM Asymmetric
Efficiency 75 %
Peak intensity 0.270 cd/lm
Required components:



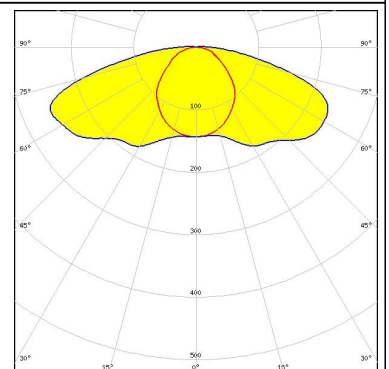
OSRAM Opto Semiconductors

LED Duris S5 (Single chip)
FWHM Asymmetric
Efficiency 76 %
Peak intensity 0.280 cd/lm
Required components:



PHILIPS

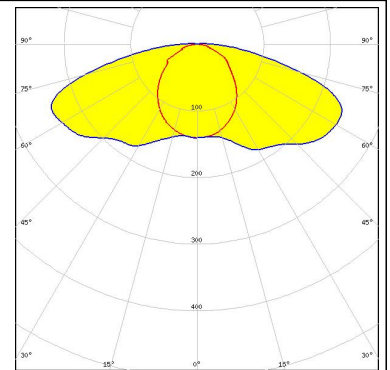
LED Fortimo LED Strip 1ft 1100lm FC HV4 & LV4
FWHM Asymmetric
Efficiency 73 %
Peak intensity 0.250 cd/lm
Required components:



PHOTOMETRIC DATA (MEASURED):

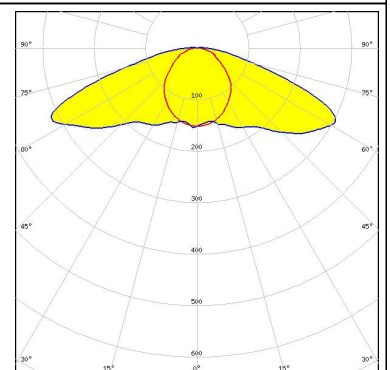
PHILIPS

LED Fortimo LED Strip 1ft 650lm FC HV4 & LV4
FWHM Asymmetric
Efficiency 73 %
Peak intensity 0.240 cd/lm
Required components:



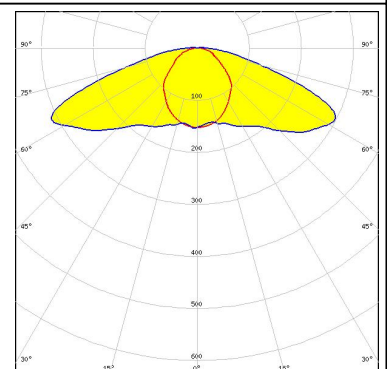
SAMSUNG

LED LT-H282C
FWHM Asymmetric
Efficiency 77 %
Peak intensity 0.310 cd/lm
Required components:



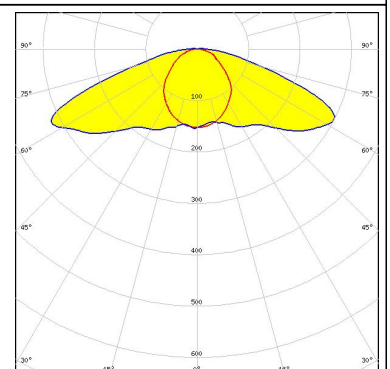
SAMSUNG

LED LT-Q282B
FWHM Asymmetric
Efficiency 77 %
Peak intensity 0.310 cd/lm
Required components:



SAMSUNG

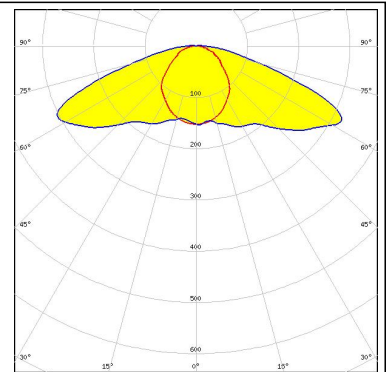
LED LT-S282H
FWHM Asymmetric
Efficiency 77 %
Peak intensity 0.320 cd/lm
Required components:



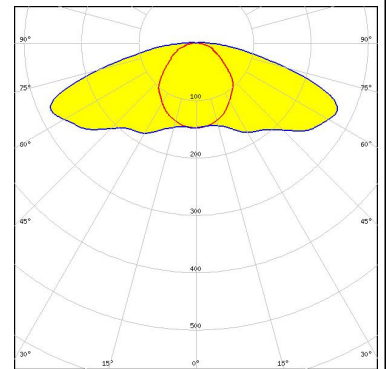
PHOTOMETRIC DATA (MEASURED):

SAMSUNG

LED LT-V282E
FWHM Asymmetric
Efficiency 77 %
Peak intensity 0.320 cd/lm
Required components:

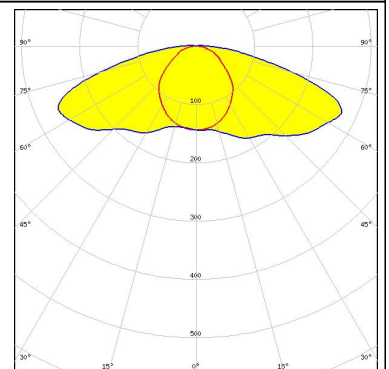


LED SunLike 3030
FWHM Asymmetric
Efficiency 76 %
Peak intensity 0.280 cd/lm
Required components:



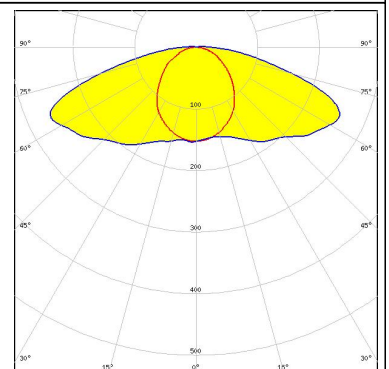
TRIDONIC

LED LLE G4 24x280mm 1250lm
FWHM Asymmetric
Efficiency 75 %
Peak intensity 0.270 cd/lm
Required components:



TRIDONIC

LED LLE G4 24x280mm 2000lm ADV
FWHM Asymmetric
Efficiency 75 %
Peak intensity 0.260 cd/lm
Required components:



PHOTOMETRIC DATA (MEASURED):

TRIDONIC

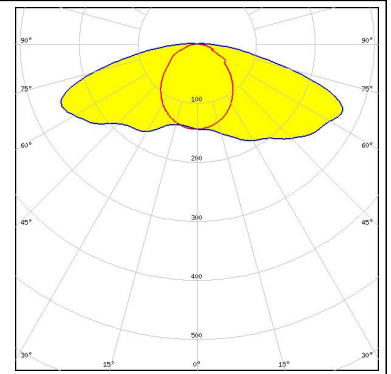
LED LLE G4 24x280mm 650lm

FWHM Asymmetric

Efficiency 75 %

Peak intensity 0.270 cd/lm

Required components:



GENERAL INFORMATION:

NOTE: The typical beam angle will be changed by different color, chip size and chip position tolerance. The typical total beam angle is the full angle measured where the luminous intensity is half of the peak value.

MATERIALS:

As part of our continuous research and improvement processes, and to ensure the best possible quality and availability of our products, LEDiL reserves the right to change material grades without notice.

PRODUCT DATA USER AGREEMENT AND DISCLAIMER:

The measured data in the provided downloadable LEDiL Product Datasheets and Mechanical 2D-Drawings is rounded and provided as reference for planning. LEDiL Oy's optical specifications have been verified by conducting performance testing of the products in accordance with the company's quality system. The reported data are averaged results of multiple measurements with typical variation. LEDiL Oy reserves the right to without prior notification make changes and improvements to its products.

LEDiL Oy assumes neither warranty, nor guarantee nor any other liability of any kind for the contents and correctness of the provided data. The provided data has been generated with highest diligence but the provided data may in reality not represent the complete possible variation range of all intrinsic parameters. Therefore, in certain cases a deviation from the provided data could occur.

LEDiL Oy reserves the right to undertake technical changes of its products without further notification which could lead to changes in the provided data. LEDiL Oy assumes no liability of any kind for the possible deviation from any provided data or any other damage resulting from the usage of the provided data.

The user agrees to this disclaimer and user agreement with the download or usage of the provided files.

LEDiL Oy

Joensuunkatu 13
FI-24240 SALO
Finland

LEDiL Inc.

228 West Page Street
Suite D
Sycamore IL 60178
USA

Local sales and technical support

[www.ledil.com/
where_to_buy](http://www.ledil.com/where_to_buy)

Shipping locations

Salo, Finland
Hong Kong, China

Distribution Partners

[www.ledil.com/
where_to_buy](http://www.ledil.com/where_to_buy)