



Chipsmall Limited consists of a professional team with an average of over 10 year of expertise in the distribution of electronic components. Based in Hongkong, we have already established firm and mutual-benefit business relationships with customers from,Europe,America and south Asia,supplying obsolete and hard-to-find components to meet their specific needs.

With the principle of “Quality Parts,Customers Priority,Honest Operation,and Considerate Service”,our business mainly focus on the distribution of electronic components. Line cards we deal with include Microchip,ALPS,ROHM,Xilinx,Pulse,ON,Everlight and Freescale. Main products comprise IC,Modules,Potentiometer,IC Socket,Relay,Connector.Our parts cover such applications as commercial,industrial, and automotives areas.

We are looking forward to setting up business relationship with you and hope to provide you with the best service and solution. Let us make a better world for our industry!



## Contact us

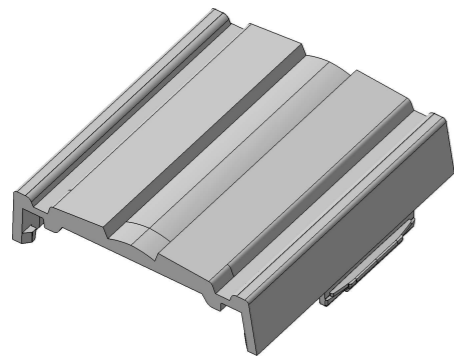
Tel: +86-755-8981 8866 Fax: +86-755-8427 6832

Email & Skype: info@chipsmall.com Web: www.chipsmall.com

Address: A1208, Overseas Decoration Building, #122 Zhenhua RD., Futian, Shenzhen, China

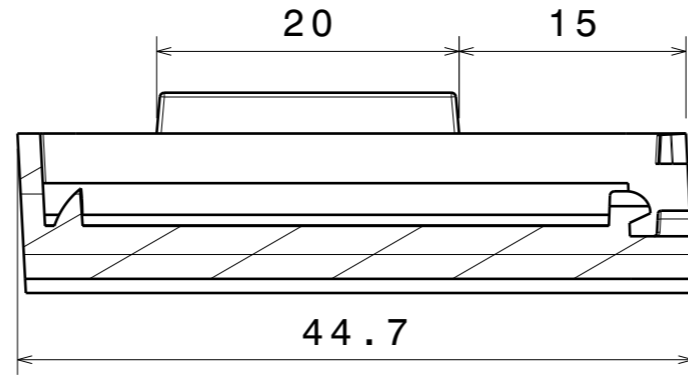


H G F E D C B A

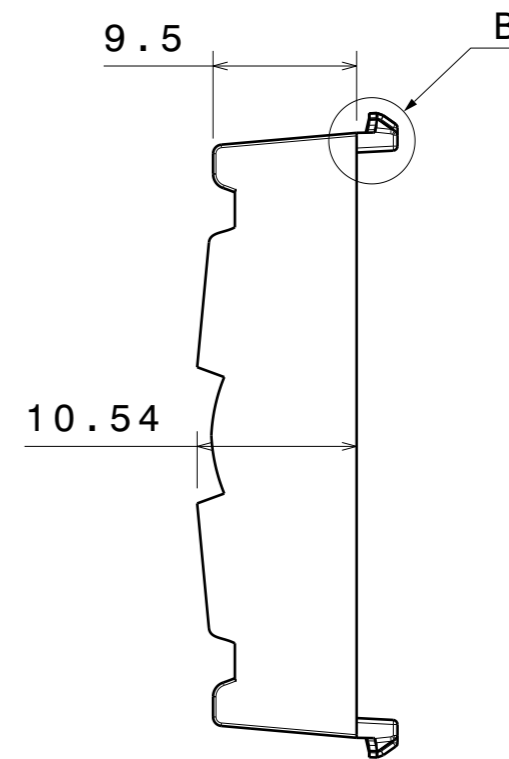
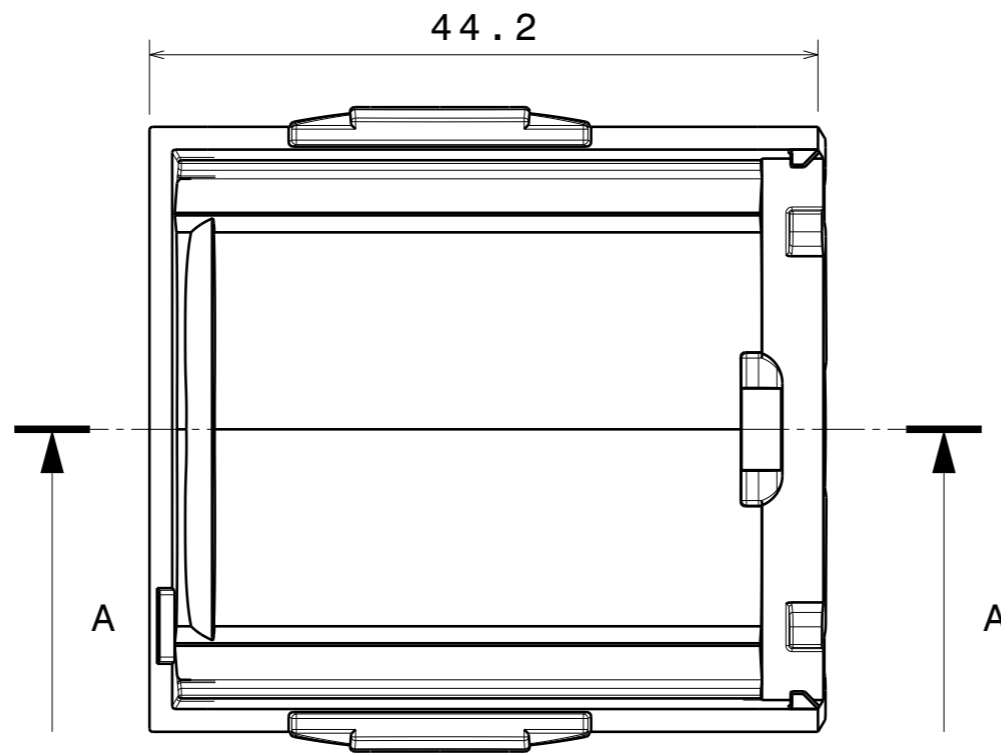
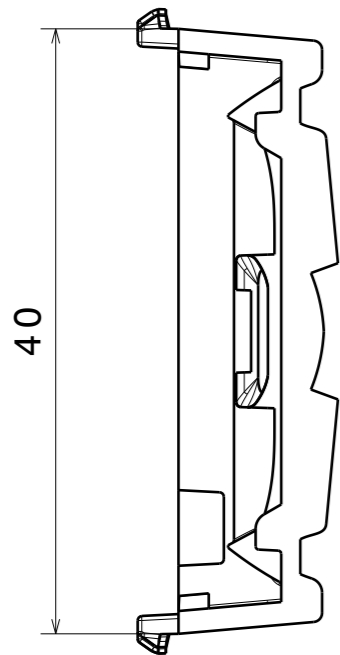
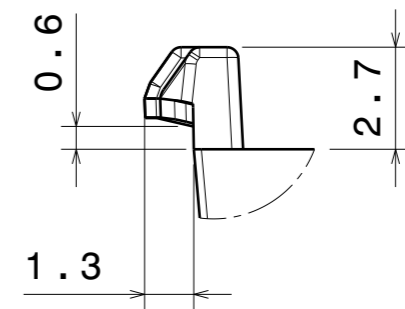


Isometric view  
Scale: 1:1

Section view A-A  
Scale: 2:1



Detail B  
Scale: 5:1



PART	TYPE	MATERIAL	COLOR / COATING
F16316		PC	clear

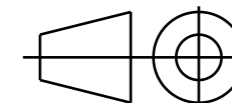
**MECHANICAL DRAWING**

PRODUCT  
**F16316\_LINNEA-0-END-B-ML**



Plastic moulding general tolerances according to DIN 16901-130 and applies if not otherwise shown in the drawing.  
Silicone moulding general tolerances according to ISO 3302-1 Class M3 and applies if not otherwise shown in the drawing.

FIRST ANGLE PROJECTION:



This drawing is the property of LEDiL Oy. It may not be copied or otherwise distributed without prior written permission from LEDiL Oy.

SCALE 2:1

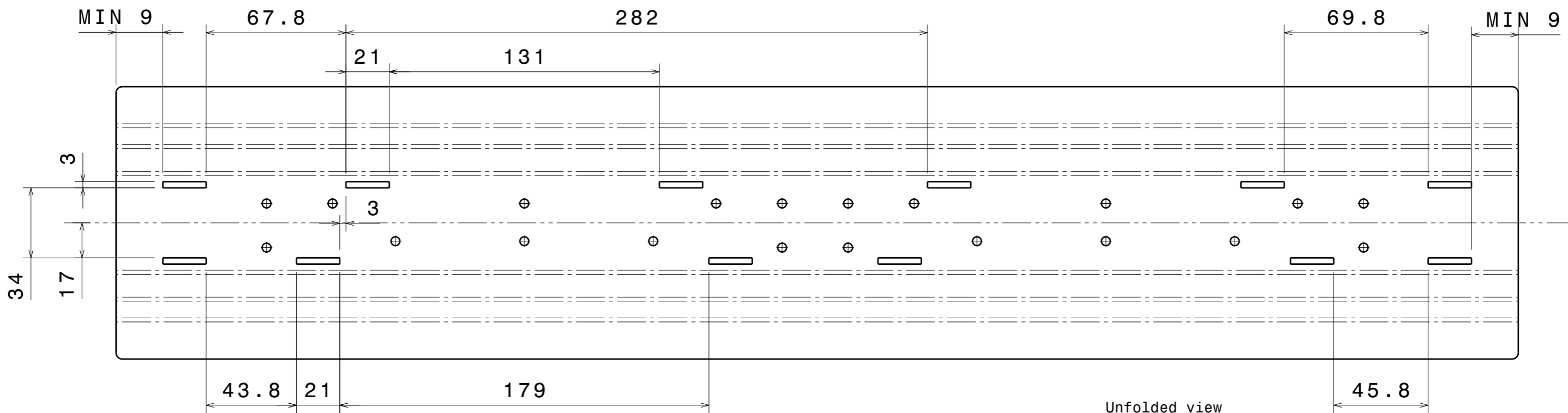
WEIGHT 7,3 g

A3 SHEET 1/2

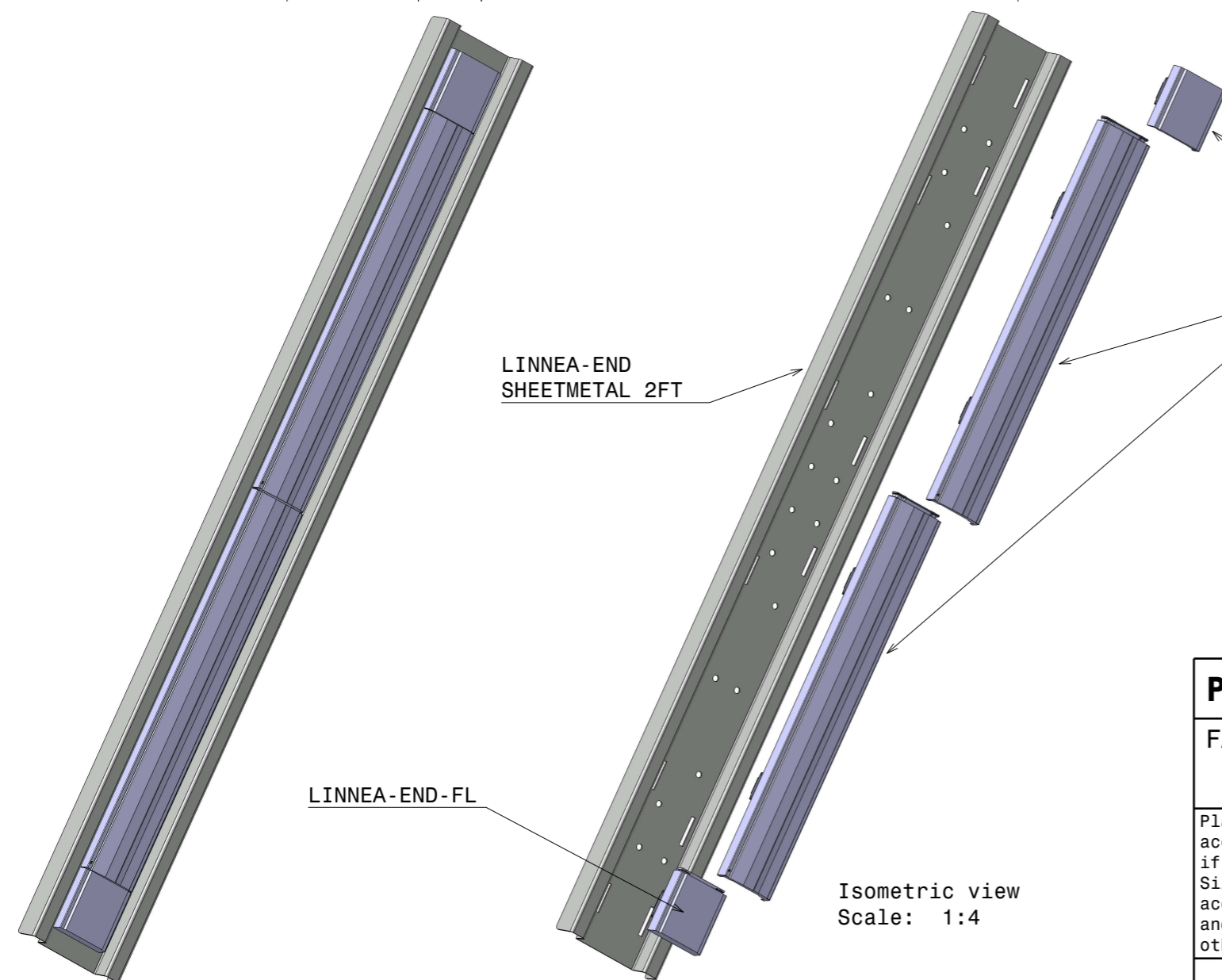
**Notes**

- PCB or heatsink level.
- LED location
- Ensure LED fitting from a product specific 3D model available from [www.ledil.com](http://www.ledil.com)
- For more details about installation please see LEDiL Installation Guide on [www.ledil.com](http://www.ledil.com)

@ A B A



Unfolded view  
Scale: 1:2



Isometric view  
Scale: 1:4

LINNEA-END-ML

LINNEA

LINNEA-END-SHEETMETAL 2FT

LINNEA-END-FL

Product1\_  
**COMPONENTS**

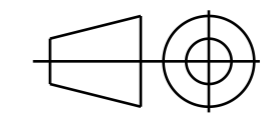
INDEX	PART	TYPE	MATERIAL	COLOR / COATING
1	LINNEA-END-SHEETMETAL_			
2	LINNEA		PC	clear
3	LINNEA		PC	clear
4	LINNEA-END-FL		PC	clear
5	LINNEA-END-ML		PC	clear

**PRODUCTION DRAWING**

FAMILY  
**LINNEA**

Plastic moulding general tolerances according to DIN 16901-130 and applies if not otherwise shown in the drawing. Silicone moulding general tolerances according to ISO 3302-1:2014(E)-M2 and applies if not otherwise shown in the drawing.

FIRST ANGLE PROJECTION:



**LEDiL**®

This drawing is the property of LEDiL Oy. It may not be copied or otherwise distributed without prior written permission from LEDiL Oy.

SCALE 1:2

WEIGHT -

A3 SHEET 2/2