



Chipsmall Limited consists of a professional team with an average of over 10 year of expertise in the distribution of electronic components. Based in Hongkong, we have already established firm and mutual-benefit business relationships with customers from,Europe,America and south Asia,supplying obsolete and hard-to-find components to meet their specific needs.

With the principle of “Quality Parts,Customers Priority,Honest Operation,and Considerate Service”,our business mainly focus on the distribution of electronic components. Line cards we deal with include Microchip,ALPS,ROHM,Xilinx,Pulse,ON,Everlight and Freescale. Main products comprise IC,Modules,Potentiometer,IC Socket,Relay,Connector.Our parts cover such applications as commercial,industrial, and automotives areas.

We are looking forward to setting up business relationship with you and hope to provide you with the best service and solution. Let us make a better world for our industry!



Contact us

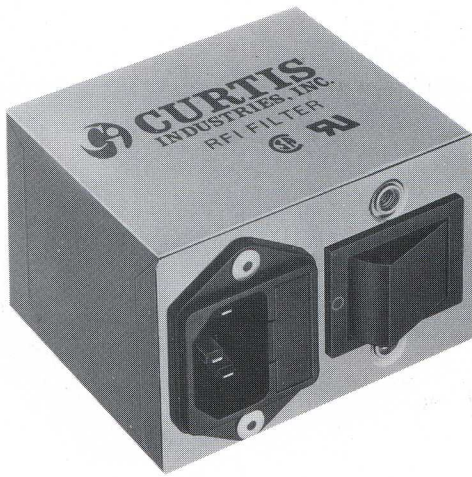
Tel: +86-755-8981 8866 Fax: +86-755-8427 6832

Email & Skype: info@chipsmall.com Web: www.chipsmall.com

Address: A1208, Overseas Decoration Building, #122 Zhenhua RD., Futian, Shenzhen, China



CURTIS F1800 RFI FILTERS



FEATURES

- High Performance Filter Designed for Switching Power Supply Emissions
- Fused IEC Connector
- ON/OFF Power Switch
- Low-Leakage Current Design

SPECIFICATIONS

Rated Voltage: 250VAC Max., 50/60 Hz.

Rated Current at: 115VAC 250VAC
3A 1.5A

Current Overload: 6X Rated for 8 seconds

Maximum Operating Ambient Temperature at Rated Current: 40° C

Humidity Range: 0-95% R.H.

Insulation Resistance: 9 x 10⁹ ohms at 100VDC

Maximum Leakage Current

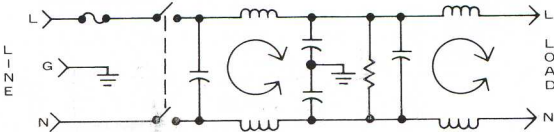
Each Line to Ground –
at 115VAC, 60 Hz.: 0.25mA
at 250VAC, 50 Hz.: 0.40mA

Hipot Test (one minute) –
Line to Ground: 1500VAC
Line to Line: 1768VDC

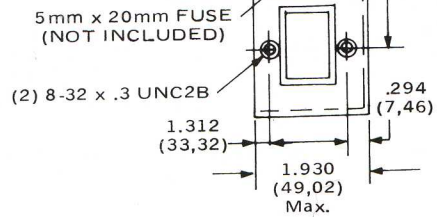
SAFETY AGENCY RECOGNITION/APPROVALS



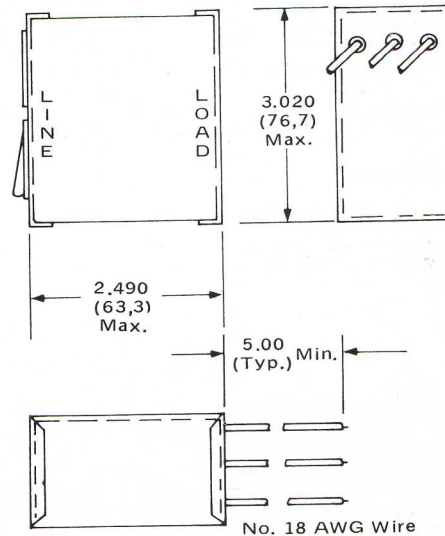
SCHEMATIC



F1800FB03



Refer to Page 49 for Standard Mounting Cutouts



Nominal Current Rating	Part Number	Termination Line/Load	MINIMUM INSERTION LOSS – dB (50 ohm Circuit)						
			MODE	.15	.50	1.0	5.0	10	30
3A	F1800FB03	Fused IEC/WIre	Common	48	60	60	60	50	50
			Differential	40	50	55	50	50	50