



Chipsmall Limited consists of a professional team with an average of over 10 year of expertise in the distribution of electronic components. Based in Hongkong, we have already established firm and mutual-benefit business relationships with customers from,Europe,America and south Asia,supplying obsolete and hard-to-find components to meet their specific needs.

With the principle of “Quality Parts,Customers Priority,Honest Operation,and Considerate Service”,our business mainly focus on the distribution of electronic components. Line cards we deal with include Microchip,ALPS,ROHM,Xilinx,Pulse,ON,Everlight and Freescale. Main products comprise IC,Modules,Potentiometer,IC Socket,Relay,Connector.Our parts cover such applications as commercial,industrial, and automotives areas.

We are looking forward to setting up business relationship with you and hope to provide you with the best service and solution. Let us make a better world for our industry!



Contact us

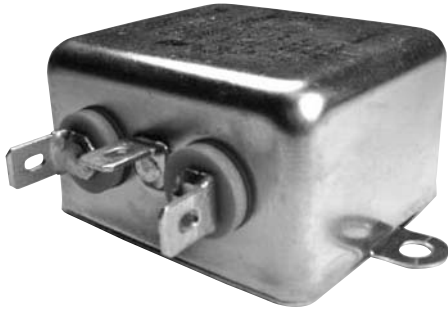
Tel: +86-755-8981 8866 Fax: +86-755-8427 6832

Email & Skype: info@chipsmall.com Web: www.chipsmall.com

Address: A1208, Overseas Decoration Building, #122 Zhenhua RD., Futian, Shenzhen, China



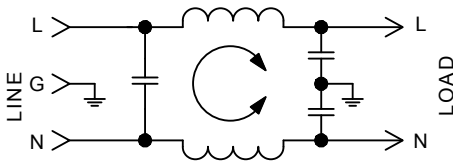
F1900 RFI Filters



Features:

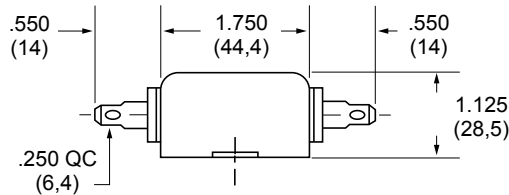
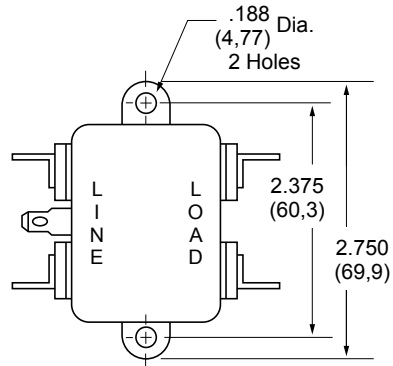
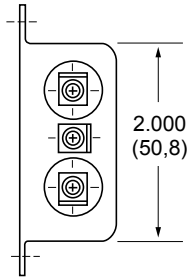
- Designed for Equipment Requiring UL1410 Approval (Consumer Electronics)
- Utilizes UL1414 Approved Components
- Greater Differential Mode Protection

F1900 Simplified Schematic



F1900AA

(3 and 6Amp) Dimensions



Specifications:

Rated Voltage: 125VAC Maximum - 50/60 Hz

Rated Current: 120VAC
3A
6A

Current Overload: 6X for 8 seconds

Hi-Pot Test (1 min):

Line to Ground 1500VAC

Line to Line 1768VDC

Insulation Resistance: $9 \times 10^9 \Omega$ at 100VDC

Ambient Temperature: 40°C Max. at rated current

Humidity Range: 0% to 95% R.H.

Termination:

A: QC – Quick Connect

Maximum Leakage Current:

Each Line to Ground **F1900**
115VAC, 60Hz: 0.25mA

Agency Approvals:



General Purpose

SINGLE PHASE FILTERS

| Nominal Current Rating | Part Number | Termination Line/Load | MINIMUM INSERTION LOSS - dB (50 ohm Circuit) | | | | | | |
|------------------------|-------------|-----------------------|--|-----------------|-----|-----|-----|----|----|
| | | | MODE | Frequency - MHz | | | | | |
| | | | | .15 | .50 | 1.0 | 5.0 | 10 | 30 |
| 3A | F1900AA03 | QC/QC | Common | 20 | 30 | 37 | 50 | 50 | 50 |
| | | | Differential | 7 | 19 | 28 | 50 | 57 | 70 |
| 6A | F1900AA06 | QC/QC | Common | 10 | 20 | 27 | 45 | 45 | 45 |
| | | | Differential | 8 | 18 | 24 | 45 | 52 | 64 |

NOTE: Other combinations of terminals may be specified on special order.

Dimensions are in inches and millimeters unless otherwise specified. Values in parentheses are metric equivalents.



Curtis Industries
A Division of Powers Holdings, Inc.

1-800-657-0853

15